

ExpressCard 11-in-1 Reader/Writer Quick Installation Guide

Features and Benefits

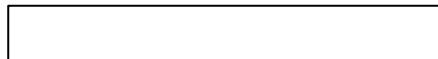
- Compatible with SD, mini SD, MMC, RS-MMC, Memory Stick, Memory Stick Duo (incl. PRO and MagicGate), Memory Stick PRO, MagicGate Memory Stick and xD Picture Card memory cards

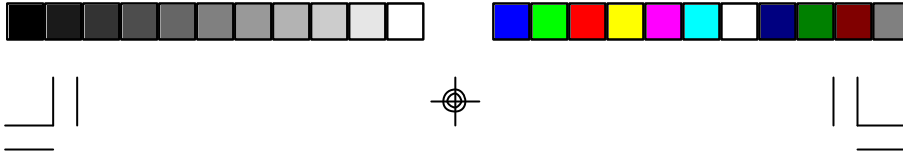
Note: The copyright protection feature of Magic Gate is not supported. However, Memory Stick read/write function is supported.

- Hot-swapping feature allows you to attach/detach this reader/writer without powering down your system
- Compliant with USB Storage Class specifications – no driver installation required!

Serial # Sticker

For future product return or exchange, this serial # is required. Please keep it for your reference.





System Requirements

- Notebook or desktop computer with an available ExpressCard slot
- Windows 2000/XP/Server 2003

Package Contents

- *ExpressCard 11-in-1 Reader/Writer*
- This quick installation guide

Layout



Figure 1. ExpressCard 11-in-1 Reader/Writer

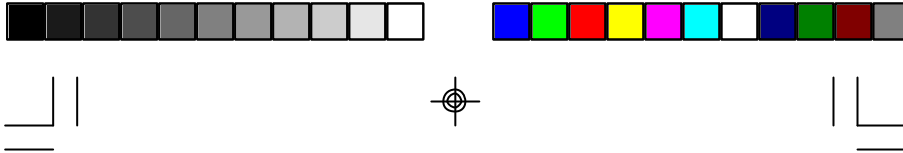
Installation

Hardware Installation

General instructions for installing the *ExpressCard 11-in-1 Reader/Writer* are provided below. Since the design of computers vary, refer to your system's reference manual for further information, if needed.

1. Insert the *ExpressCard 11-in-1 Reader/Writer* into the ExpressCard slot of the computer with its **Express Card Connector** facing the slot. Push the card into the slot gently, yet firmly for a solid connection.





Note: Some ExpressCard slots will click when the ExpressCard is fully inserted into the slot.

2. If your system was powered off when you plugged in the ExpressCard, turn it on and go to **Driver Installation** on page 3. Otherwise, go directly to **Driver Installation** on page 3.

Driver Installation

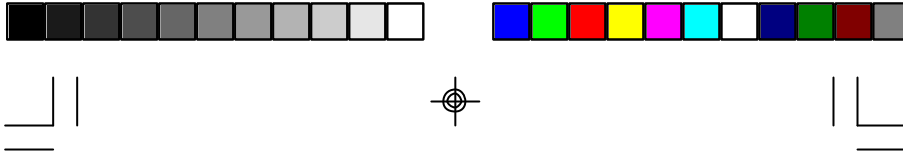
Windows 2000, XP and Server 2003 automatically detects and installs the correct driver for the *ExpressCard 11-in-1 Reader/Writer*. No driver installation is needed.

Verify 2000/XP/2003 Installation

1. Right click **My Computer**, click **Manage**, then click **Device Manager**.
2. Click on the + (plus sign) in front of **Disk Drives**, **Generic STORAGE DEVICE USB Device** should be displayed.

Using the Reader/Writer

When inserting or removing memory cards, make sure that the *ExpressCard 11-in-1 Reader/Writer* does not move from side to side in the ExpressCard slot, otherwise it may accidentally eject from the slot.



Inserting Memory Cards

For all memory cards, insert with the gold pins forward and facing down. Push the memory card into the slot until you hear or feel a click then release. The memory card will retract slightly upon release.

Removing Memory Cards

Memory cards can be removed at any time. Push in on the memory card, when you hear or feel a click, release pressure and pull the memory card out.

Accessing Memory Cards

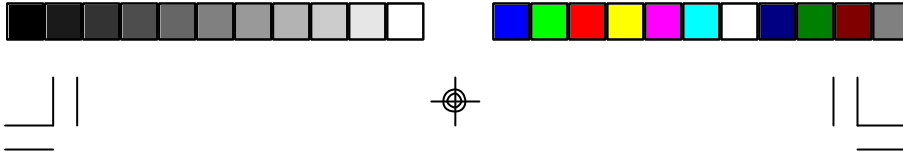
When the reader/writer is successfully installed, a **Removable Disk** icon will appear in **My Computer**. To access the memory card, double click the disk icon.

Removing the ExpressCard

Before ejecting the *ExpressCard 11-in-1 Reader/Writer* from the ExpressCard slot, first use the **Safely Remove Hardware** utility to stop it. Not following the steps below could lead to system crashes, data corruption or data loss. Follow the steps below for your version of Windows.

For Windows 2000

1. Click the **Unplug or Eject Hardware** icon located in the taskbar by the system clock.
2. Click **Stop USB Mass StorageDevice.....**



3. At the **Safe To Remove Hardware** box, click **OK**.
The *ExpressCard 11-in-1 Reader/Writer* can be ejected.

For Windows XP/Server 2003

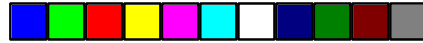
1. Click the **Safely Remove Hardware** icon located in the taskbar by the system clock.
2. Click **Safely remove USB Mass Storage Device.....**
3. When **Safe to Remove Hardware** box pops up, the *ExpressCard 11-in-1 Reader/Writer* can be ejected.





Blank Page





Technical Support and Warranty

QUESTIONS? SIIG's **Online Support** has answers! Simply visit our website at www.siig.com and click on **Support**. Our online support database is updated daily with new drivers and solutions. Answers to your questions could be just a few clicks away. You can also submit questions online and a technical support analysts will promptly respond.

A 5-year manufacturer warranty supplied with this product is offered by SIIG, Inc. Please see SIIG website for more warranty details. If you should happen to encounter any problems with this product, please follow the procedures below.

If it is within the store's return policy period, please return the product to the store where you purchased from. If your purchase has passed the store's return policy period, please follow these steps to have the product repaired or replaced.

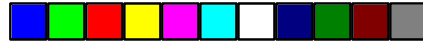
Step 1: Submit your RMA request.

Go to www.siig.com, click **Support**, then **RMA** to submit a request to [SIIG RMA](#). If the product is determined to be defective, an RMA number will be issued. SIIG RMA department can also be reached at (510) 413-5333.

Step 2: After obtaining an RMA number, ship the product.

- Properly pack the product for shipping. All accessories that came with the original package must be included.
- Clearly write your RMA number on the top of the returned package. SIIG will refuse to accept any shipping package, and will not be responsible for a product returned without an RMA number posted on the outside of the shipping carton.
- You are responsible for the cost of shipping the product to SIIG at the following address:
SIIG, Inc.
6078 Stewart Avenue
Fremont, CA 94538
RMA #: _____
- SIIG will ship the repaired or replaced product via Ground in the U.S. and International Economy outside of the U.S. at no cost to the customer.





About SIIG, Inc.

Founded in 1985, SIIG, Inc. is a leading computer upgrade manufacturer of I/O connectivity products, including PCI & ISA serial and parallel ports, USB, SerialATA & UltraATA controllers, FireWire (1394a/b), Networking, Sound Cards, and other accessories. SIIG is the premier one-stop source of upgrades.

SIIG products offer comprehensive user manuals, many user-friendly features, and are backed by an extensive manufacturer warranty. High-quality control standards are evident by the overall ease of installation and compatibility of our products, as well as one of the lowest defective return rates in the industry. SIIG products can be found in computer retail stores, mail order catalogs, and e-commerce sites in the Americas and the UK, as well as through major distributors, system integrators, and VARs.



<p style="text-align: center;">PRODUCT NAME ExpressCard 11-in-1 Reader/Writer</p> <p>FCC RULES: TESTED TO COMPLY WITH FCC PART 15, CLASS B OPERATING ENVIRONMENT: FOR HOME OR OFFICE USE</p> <p style="text-align: center;">FCC COMPLIANCE STATEMENT:</p> <p>This device complies with part 15 of the FCC Rules. Operation is subject to the following two conditions: (1) This device may not cause harmful interference, and (2) this device must accept any interference received, including interference that may cause undesired operation.</p> <p style="text-align: center;">THE PARTY RESPONSIBLE FOR PRODUCT COMPLIANCE SIIG, Inc. 6078 Stewart Ave. Fremont, CA 94538-3152</p>	
---	--

ExpressCard 11-in-1 Reader/Writer is a trademark of SIIG, Inc. SIIG and SIIG logo are registered trademarks of SIIG, Inc. Other names used in this publication are for identification only and may be trademarks of their respective companies.

January, 2006

Copyright © 2006 by SIIG, Inc. All rights reserved.

