



Xear Audio Center

USB Audio Control Panel User Manual

Rev. 1.6

May. 17 2012

Table of Contents

SECTION 1 Installing the Software Package	4
1.1 Installation.....	4
1.2 Un-Installation.....	7
SECTION 2 Xear Audio Center Introduction.....	11
2.0 Open USB Audio Device Software CPL.....	11
2.1 Xear Audio Center Function Introduction.....	15
2.1.1 Default Device selected	15
2.1.2 Master Volume / Mute & Un-Mute	17
2.1.3 SVN (Smart Volume Normalizer)	18
2.1.4 EX.....	19
2.1.5 ASIO	20
2.1.6 Function Pop Menu	21
2.1.7 Function Page Area.....	22
2.1.8 Audio Status Panel	23
2.1.9 Profile Panel	25
2.2 Speaker Device function introduction	26
2.2.1 Volume control Page	26
2.2.2 Speaker Settings Page	27
2.2.3 Sample Rate Page	28
2.2.4 Equalizer	29
2.2.5 Environment Effect	31
2.2.6 7.1 Virtual Speaker Shifter.....	32
2.2.7 Flex Bass II	34
2.2.8 Xear SingFX.....	36

2.2.9 Xear Surround Headphone	37
2.2.10 Xear Surround Speaker	38
2.3 SPDIF-Out Device function introduction	39
2.3.1 Volume control Page	39
2.3.2 Sample Rate Page	40
2.4 Mic 、Line-in Device function introduction	41
2.4.1 Volume control Page	41
2.4.2 Sample Rate Page	42
2.4.3 Xear Magic Voice Page (Microphone device only)	43
2.5 SPDIF-In Device function introduction	44
2.5.1 Volume control Page	44
2.5.2 Sample Rate Page	45
2.6 Stereo Mix Device function introduction	46
2.6.1 Volume control Page	46
2.6.2 Sample Rate Page	47
2.7 Information Page Introduction	48
2.8 Tray Icon Function Introduction.....	49
Appendix A - Multi-Lingual Supporting List	54

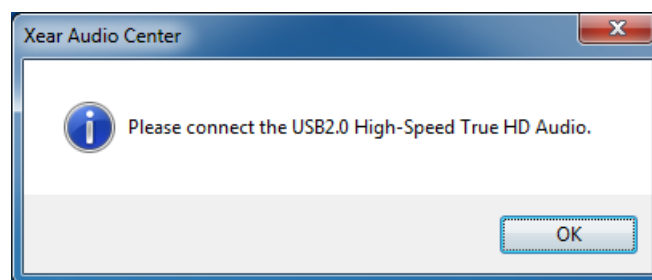
SECTION 1 Installing the Software Package

Notice:

Ensure that you have plug-in the USB audio card before installing USB 2.0 High-Speed True HD Audio driver. Otherwise, driver installation error may occur.

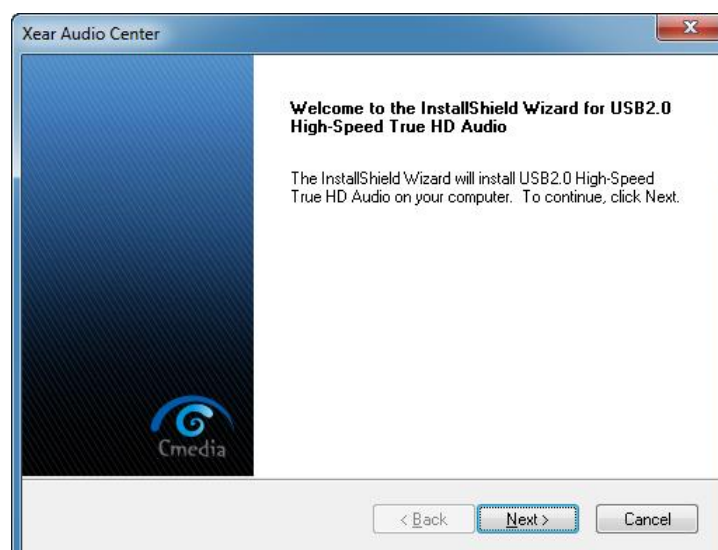
Before installing/Uninstalling, you should close all audio programs to avoid the driver installation failed.

- ❖ Please make sure your USB 2.0 High-Speed True HD Audio hardware device was plug-in and then double click the setup.exe file Otherwise you will see follow dialog.

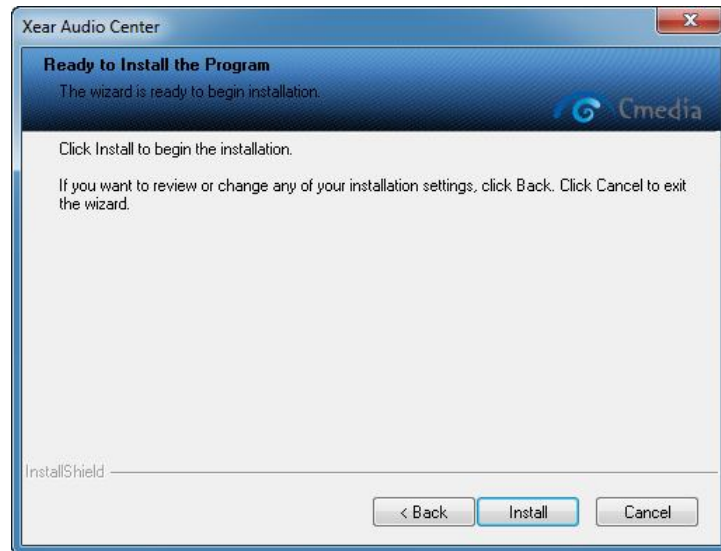


1.1 Installation

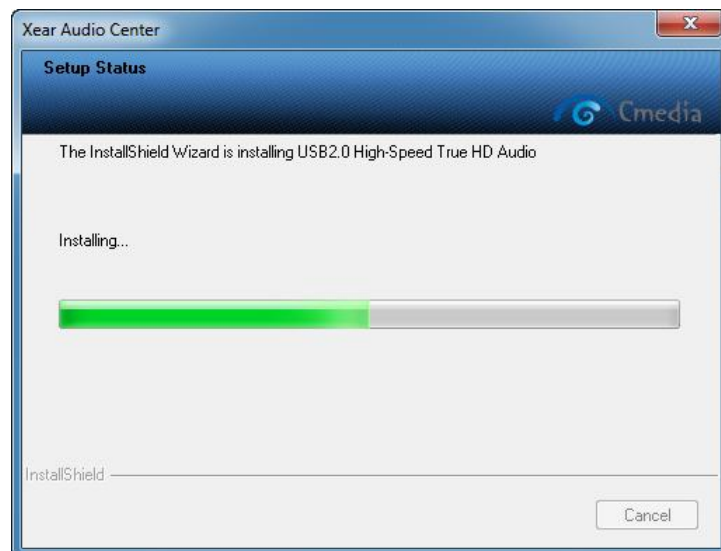
- ❖ Start Driver installing, you can see a welcome window, please press "Next" button to next step, press "Cancel" if you want to quit installation as following diagram.



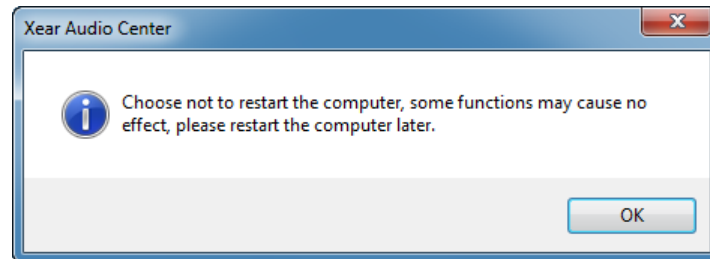
- ❖ Click on the install button to start installing.



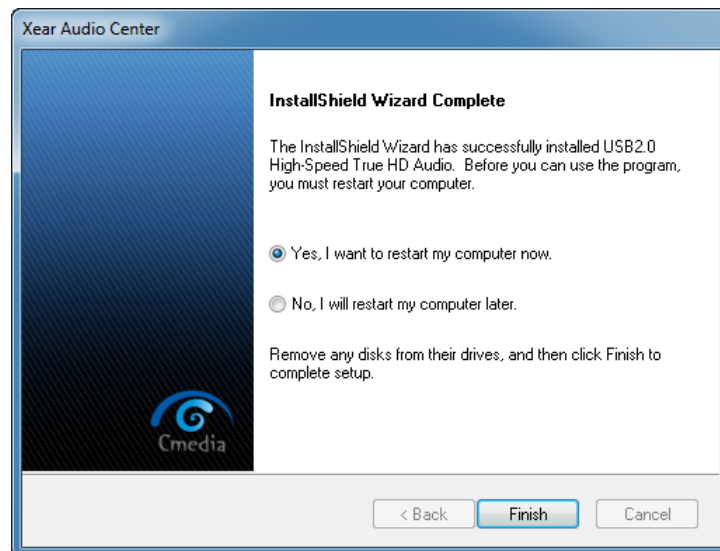
- ❖ Start copy, the “C:\Program Files\Xear Audio Center” folder will be created, and start to copy necessary files and install driver and CPL.



- ❖ Before go to the restart confirmation window, there is a message box to advise customer that they need to restart PC to make the function be effective.

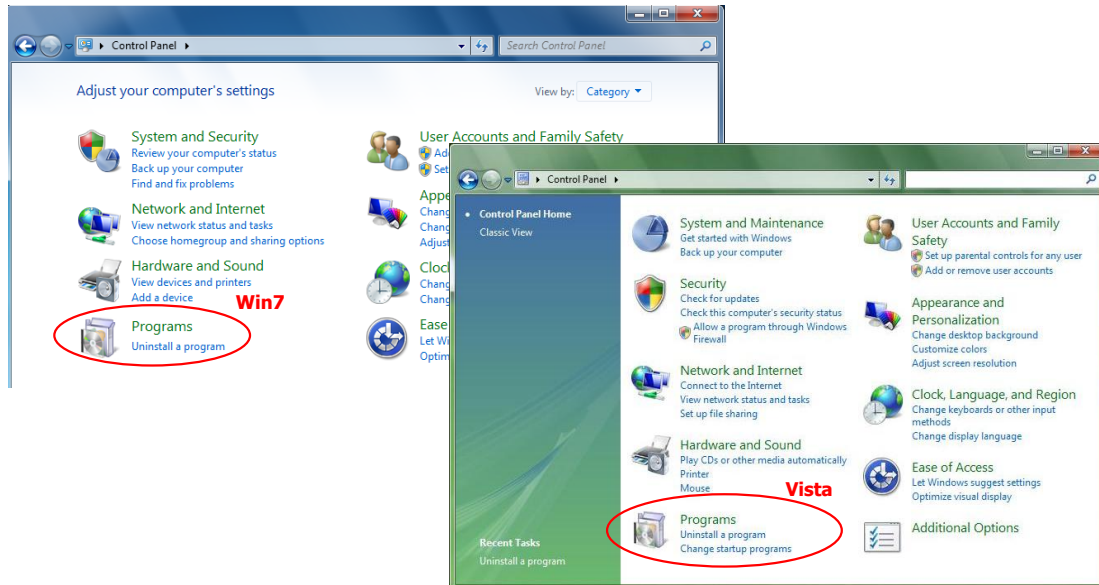


- ❖ Restart confirmation and click finish button to complete installing.

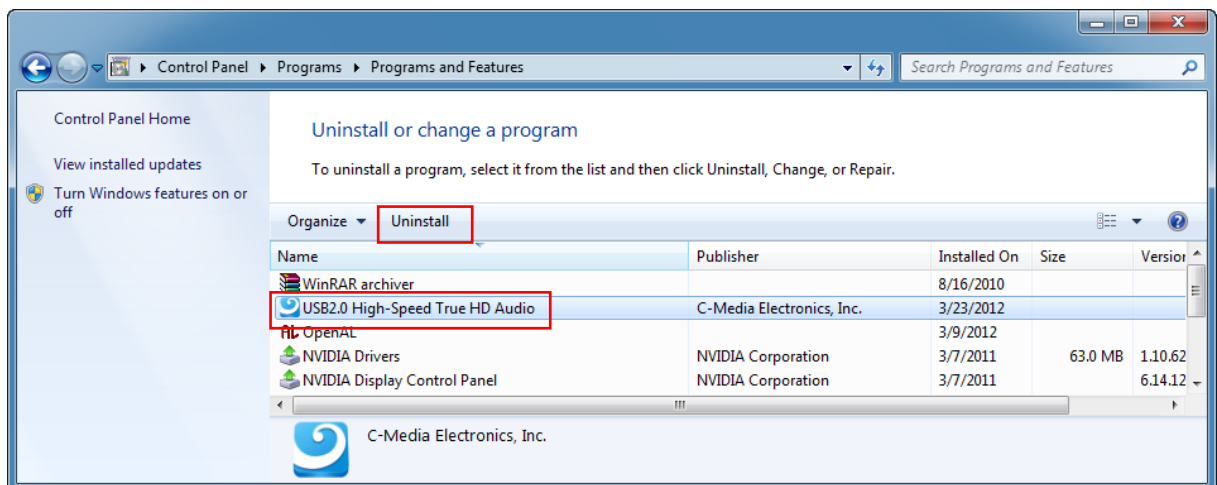


1.2 Un-Installation

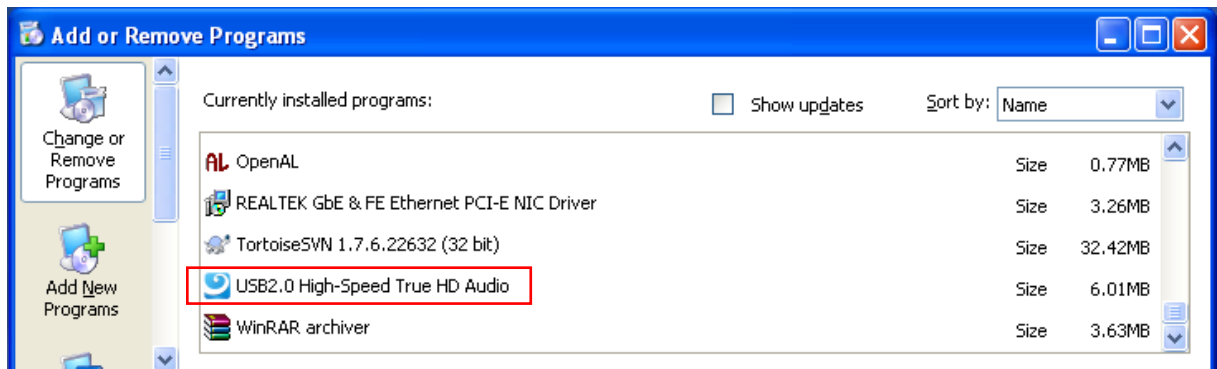
- ❖ Double click the “Programs/Uninstall a program” item from Windows Control Panel.



- ❖ Select “USB2.0 High-Speed True HD Audio” item, and then click “Uninstall” button.
Win 8/7/Vista



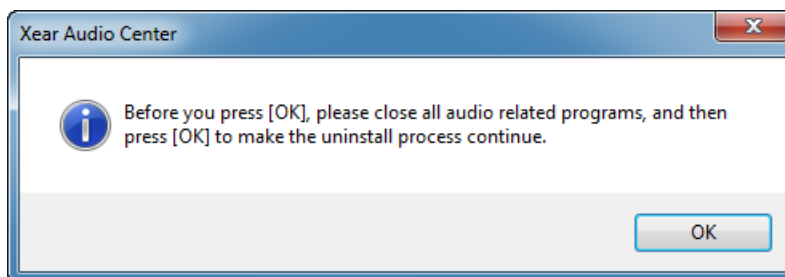
Windows XP



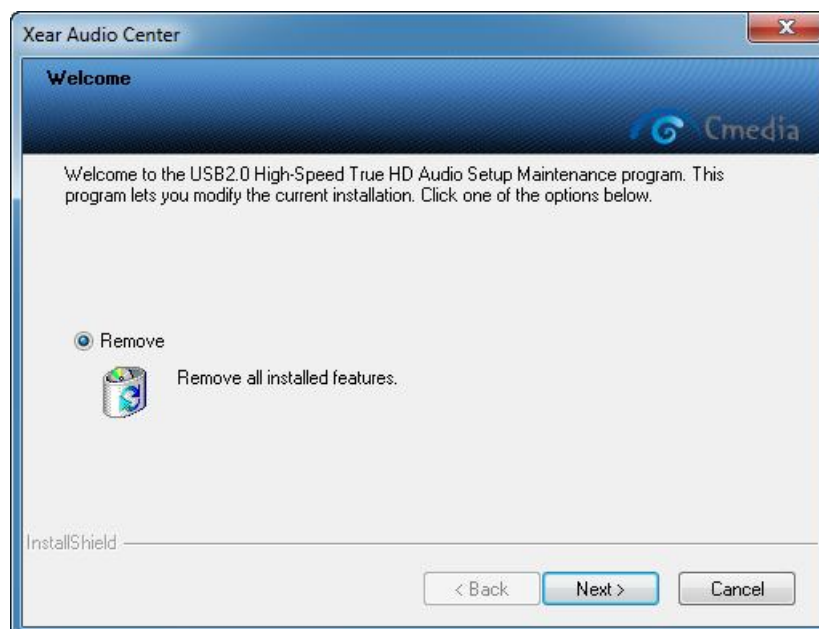
- ❖ Start uninstalling process.



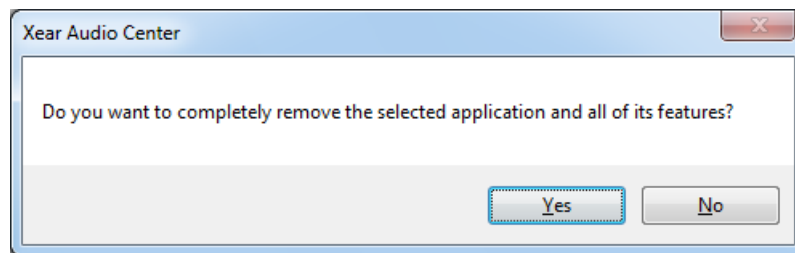
- ❖ Before Uninstalling, you should close all audio programs to avoid the driver installation failed.



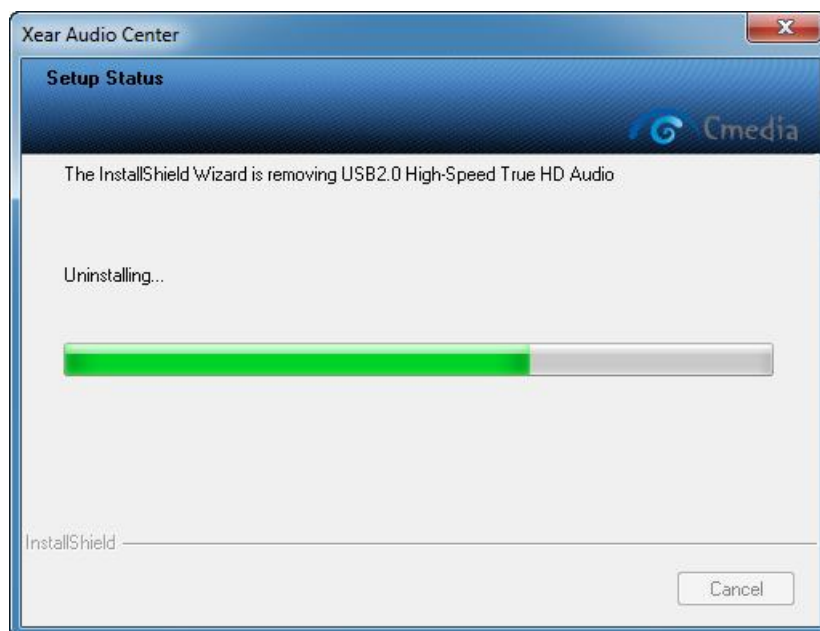
- ❖ Click next to start remove



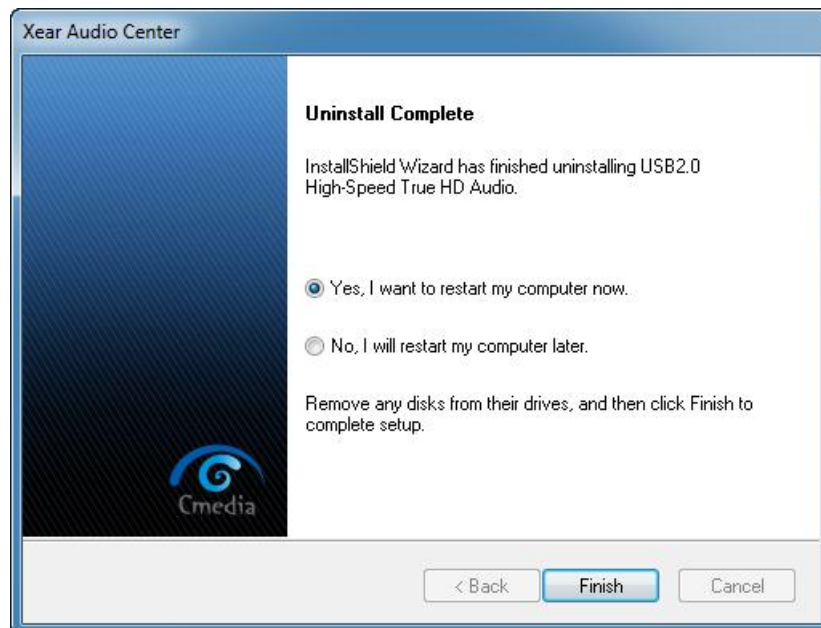
❖ Double confirmation



❖ Starting remove...



- ❖ Uninstall driver successfully, it is recommend restarting your computer to completely remove driver.



SECTION 2 Xear Audio Center Introduction

2.0 Open USB Audio Device Software CPL

After the driver installing and rebooting, you will find the USB Advanced Audio Device CPL (Xear Audio Center) icon on the system tray bar.

- ❖ You are able to open the CPL by double-clicking on the icon as following diagram.

Win 8/7/Vista Tray Icon



XP Tray Icon



- ❖ When you open the Xear Audio Center firstly, you can see a message as below, you can get the information about how getting start to use Xear Audio Center.



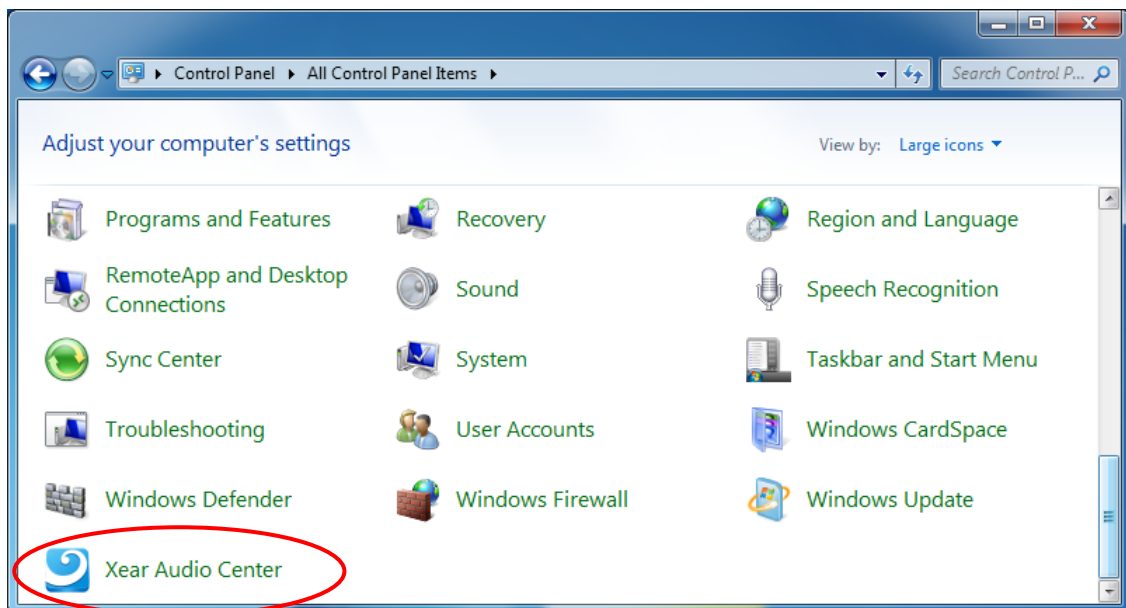
If you don't want to see this window next time, you can click on the "Don't show this message again" option.

❖ The “Xear Audio Center” will appear as below diagram.

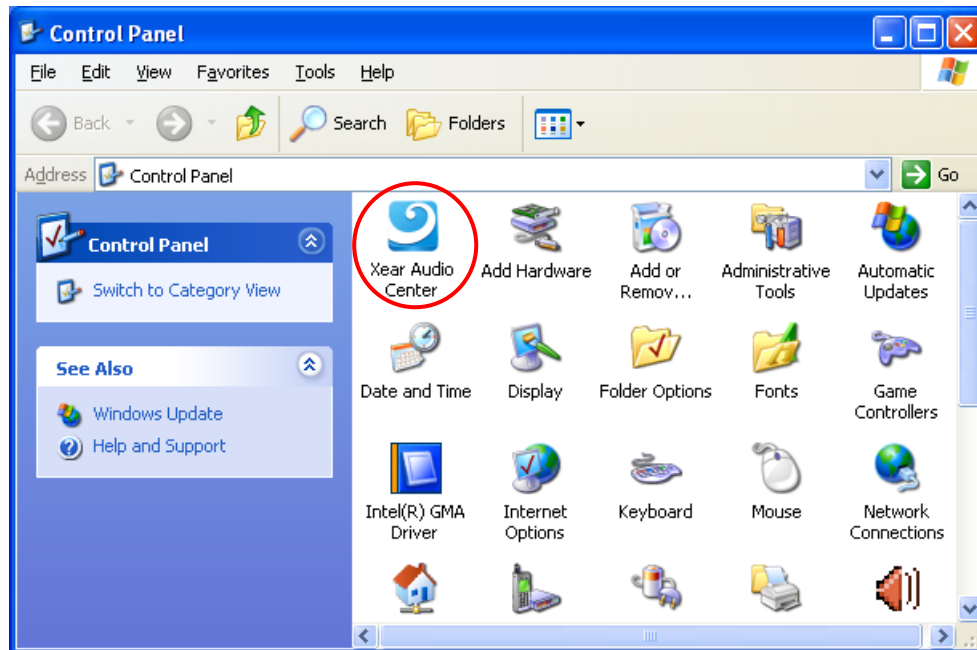


❖ If the tray icon does not appear in your system tray, please go to the Windows control panel and double click the “Xear Audio Center” CPL icon to open it.

Win 8 / 7 / Vista



Windows XP



- ❖ How to make CPL icon visible in the system tray?



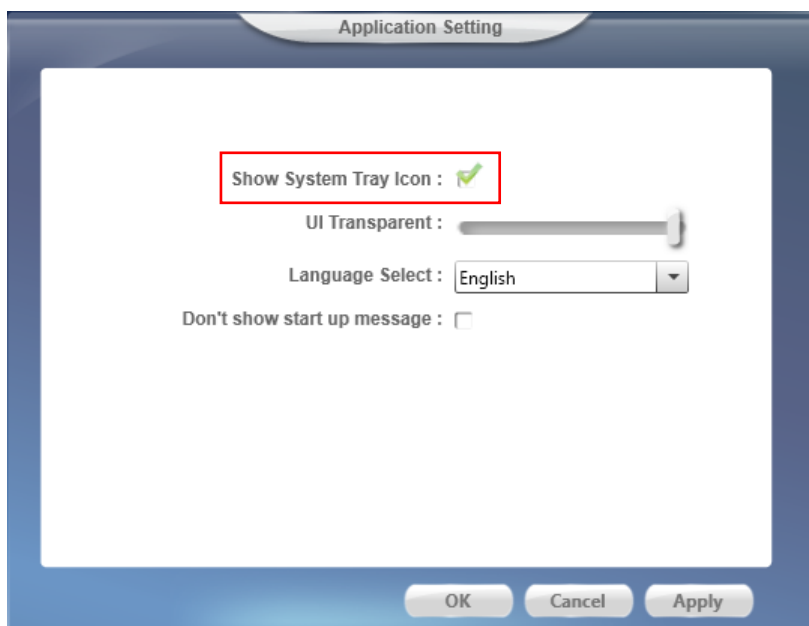
1. Open Xear Audio Center



2. Click on the “setting” button to open setting window.



3. Check “Show System Tray Icon”, the Xear Audio center icon will show in the system tray.



2.1 Xear Audio Center Function Introduction

You can control the USB Audio device configuration as below diagram.

2.1.1 Default Device selected


Before the Audio device playback or recording operation starting, it needs to select a device for the default device. Windows OS will assign the system resource to the default device.



■ Set as Default Output Device (Speaker)

To mouse over on the “Speakers” device (), and clicking mouse

left on the **check box** () or the **speaker device icon** to set the

default device in “Speakers” ().

■ Set as Default Input Device (Mic)

To mouse over on the “Mic” device (), and click on the **check**

box () or **Mic device icon** to set the default device in “Mic”

().

■ Function Behavior

- There will be one and only one **audio output device** (Speaker or SPDIF-Out) set as the default audio output device for a specific role in windows 8, 7 and Vista.
- There will be one and only one **audio Input device** (Mic-in, Line-in, SPDIF-In or Stereo Mix) set as the default audio input device for a specific role in windows 8, 7 and Vista.

2.1.2 Master Volume / Mute & Un-Mute





■ Master Volume Adjusting

You can increase or decrease volume of **all output device** (Speaker, Headphone and SPDIF-Out etc.) by this mater volume bar



■ Mute/ Un-Mute Function

You can mute/un-mute volume of **all output device** (Speaker, Headphone and SPDIF-Out etc.) by this mute () / Un-mute button ().

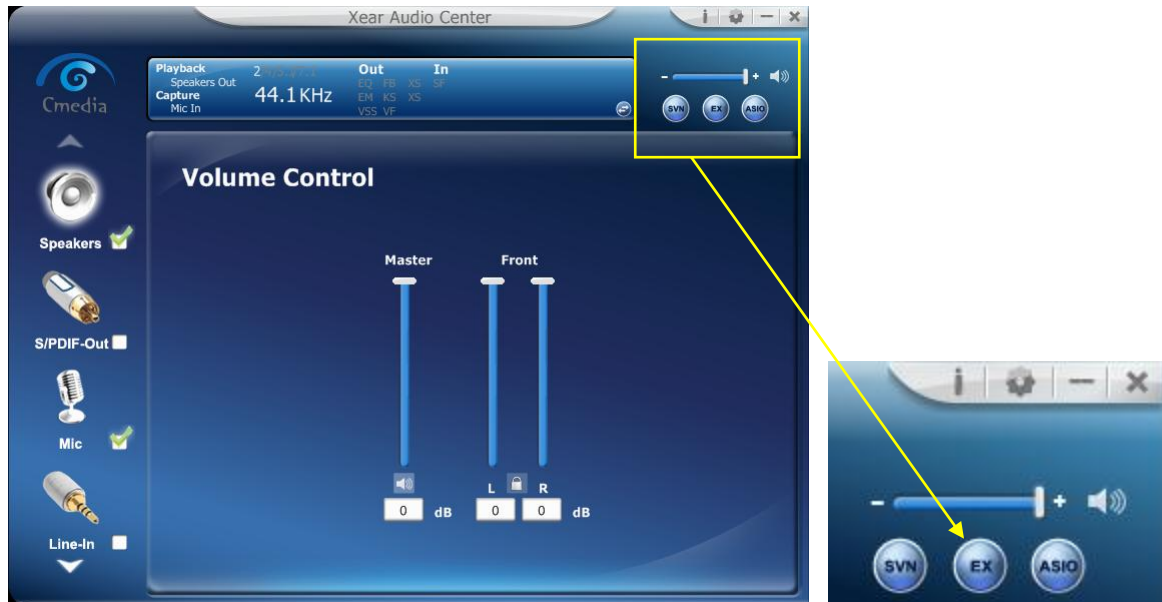
2.1.3 SVN (Smart Volume Normalizer)



■ Function Introduction

When click on the SVN button, the SVN function was ON, SVN is abbreviated from Smart Volume Normalization, Normalizes the volume of all audio sources into a constant level and also enhances your 3D sound listening range and advantages in gaming.

2.1.4 EX



■ Function Introduction

C-Media Xear3D EX technology provides a complete and fully backward compatible 3D audio interface for Windows 8, 7 and Vista.

2.1.5 ASIO



■ Function Introduction

Face-Lift CPL supports launch ASIO 2.2 control panel.

ASIO is abbreviated from “Audio Stream Input Output”; Audio Stream Input / Output (ASIO) is a computer sound card driver protocol for digital audio specified by Steinberg, providing a low-latency and high fidelity interface between a software application and a computer's sound card.

2.1.6 Function Pop Menu

Xear Audio Center provides several sound effects, there is a pop menu for each output/input device and you can entry into the sound effect page to enjoy your music, movie and gaming.

How to open pop menu:

- I. Double click left mouse on Device Icon.
- II. One click left mouse button on Device Icon.



2.1.7 Function Page Area

When you click one of the function items in pop menu, it can entry into a function page as below area as below.

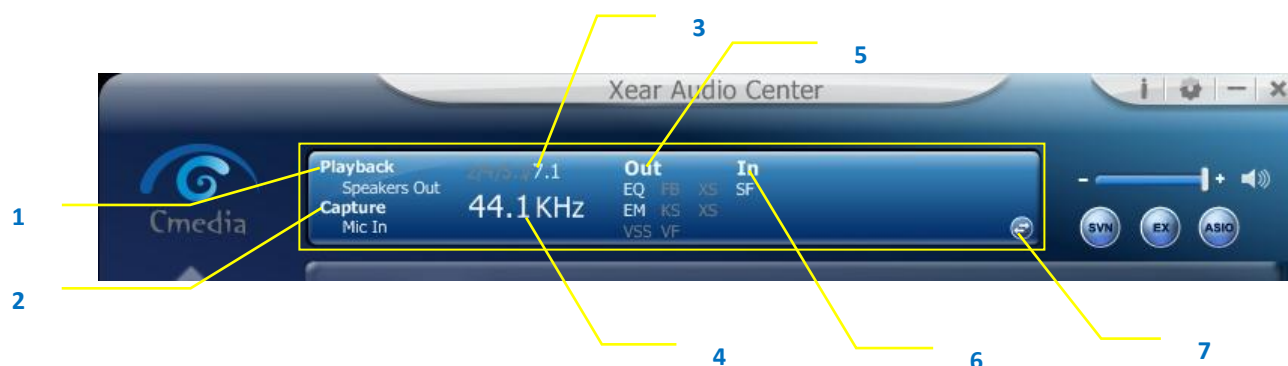
Choose the Equalizer Page



Entry into Equalizer Function Page



2.1.8 Audio Status Panel



1. Playback (Speakers Out)

It indicates the output default device.

2. Capture (Mic In)

It indicates the input default device.

3. Speaker Numbers (2/4/5.1/7.1)

It indicates the speaker numbers for Speaker device only.

4. Sample Rate

It indicates the Playback sample rate for default output device.

5. Audio Output effect indicator

It indicates the playback sound effect status.

Abbreviation	Sound effect
EQ	Equalizer
EM	Environment Effects
VSS	7.1 Virtual Speaker Shifter
FB	Flex Bass II
KS	Xear SingFX → Key Shifting
VF	Xear SingFX → Vocal Fading

6. In effect indicator

It indicates the playback sound effect status.

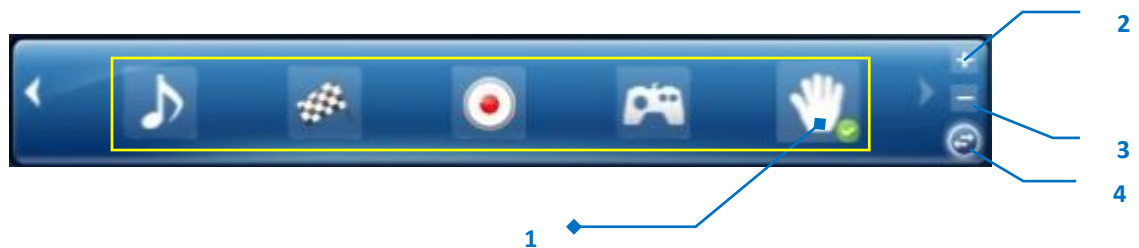
Abbreviation	Sound effect
SF	Xear SingFX → Microphone Echo
SF	Xear SingFX → Magic Voice

7. Switch to Profile Panel button

Click on this button will switch status bar to Profile panel. (Refer to [2.1.9 Profile Panel](#))

2.1.9 Profile Panel

This is the profile for sound effect setting; it has the preset mode and user define mode, the user define mode can be customizing.



1. Profile Mode:

You can set the preset profile mode by these profile buttons. When the preset mode is active, there is a Green-check symbol showing on the right-down corner.

2. Add Profile:

You can adjust specific sound effects (Ex: EQ, EM etc...) settings and clicks this "+" add profile button to name and create a user-define mode.

3. Delete Profile:

You can click this "-" button to delete the user-define mode.

4. Switch Button:

This switches the Profile panel to Audio Status Panel.

2.2 Speaker Device function introduction

2.2.1 Volume control Page



❖ Function Introduction

This function page provides a volume control for Speaker device.

1. Volume control bar:

Master – It can adjust volume level for all channels.

Front - It can adjust volume level for front channel.

2. Left/ Right Channel Lock (Front, Cen/LFE, Rear, Side):

Clicking on the lock/ un-lock button, it can lock left-channel and right-channel to sync L/R channel.

3. Mute / Un-mute:

Clicking on the mute/ un-mute button, it can mute all channels.

4. dB Input Area (Front, Cen/LFE, Rear, Side):

You can directly fill-in a dB value into this text box to set the volume level.

2.2.2 Speaker Settings Page



❖ Function Introduction

You can set the speaker numbers (Stereo/ Quadraphonic /5.1 Surround /7.1 Surround) in this page.

1. **LFE/Center Channel Swap** -- When this item enable, it can swap the audio stream between Center/LFE.

2.2.3 Sample Rate Page



❖ Function Introduction

This function page provides a sample rate setting for Speaker device.

1. Sample Rate button

44.1 KHz - set playback sample rate to 44.1K

48 KHz - set playback sample rate to 48K

96 KHz - set playback sample rate to 96K

192 KHz - set playback sample rate to 192K

2. Bit Depth button

16bit - set playback bit depth to 16bit

24bit - set playback bit depth to 24bit

2.2.4 Equalizer



❖ Function Introduction

It provides a 10-band EQ function; you will be able to adjust the EQ band by manual and create customize preset items or click on the preset EQ mode

1. EQ enable/disable switch

Click on this check box to enable/disable EQ

2. Preset mode

Select a pre-set mode for equalizer that is designed accordingly. There are 12 preset modes such as Bass, Treble, Live, Rock, Jazz, etc.

3. EQ band controller

You can change the gain setting for each band (30/ 60/ 120/ 250/ 500/ 1K/ 2K/ 4K/ 8K/ 16K)

4. Manual mode

You can change the gain setting for each band and then give it a name in the

“A. Input Field” and then click “” to add your new setting into the “B.

Manual Mode List”. Click “” to delete settings.



2.2.5 Environment Effect



❖ Function Introduction

It provides 28 special environment emulations; you can hear different sound reflection and reverberation.

1. Environment Effect enable/disable switch

Click on this check box to enable/disable Environment Effect.

2. Environment Effect mode

Click on an Environment effect button or drop the dropdown list to choose a Environment effect.

3. Zoom Size

You can change the "Room Size" to simulate a larger or smaller space.

2.2.6 7.1 Virtual Speaker Shifter



❖ Function Introduction

You can use this page to simulate the speaker direction and distance.

1. 7.1 Virtual speaker shifter enable/disable switch

Click on this check box to enable/disable 7.1 Virtual Speaker.

2. Auto Rotation Mode

The virtual speakers rotate clockwise or counterclockwise slowly.

3. Manually Rotation Mode

Use mouse to rotate the virtual speakers on the screen manually.

4. Manual Shifting (Free Moving Mode)

Use pointer and click-and-drag to move the location of individual virtual speakers.

5. Reset

Reset the location of virtual speakers / virtual listener to default.

6. Virtual Speaker (L/R/Ls/Rs/Lb/Rb/C/W)

Each virtual speaker virtualizes one channel of the 7.1 channel speakers in the real world.

7. Volume Control

Each virtual speaker virtualizes one channel of the 7.1 channel speakers in the real world.

8. Volume indicator

Indicate value for each channel.

2.2.7 Flex Bass II



❖ Function Introduction

You can use this function to increase/decrease the LFE strength. This function would cut the low frequency band (50~250Hz) of stereo music content (ex. Mp3, WMA, CD Audio) and transfer to subwoofer or each speaker.

1. Flex Bass II enable/disable switch

Click on this check box to enable/disable Flex Bass II.

2. Cut Off Frequency:

The cutting range of low frequency is from 50Hz to 250Hz.

3. Bass Level:

The bass level range is from -12 to 12dB.

4. Speaker Size (L/R/Ls/Rs/Lb/Rb/C/W)

Small Speaker w/o bass

When the speaker size is setting to small, you can hear the sound resonance more obvious and reverberation from subwoofer.

Large Speaker w/ bass:

When the speaker size is setting to large, you can hear the sound resonance more obvious and reverberation from itself.

5. Speaker Diagram

You also can check the speaker size from this home theater diagram.

Small Speaker



Large Speaker



2.2.8 Xear SingFX



❖ Function Introduction

Xear SingFX page provides 2 feature for karaoke application.

1. Key Shifting switch

It provides the key change function, there are shifting-up 4 steps and shifting-down 4 steps, you can use slider bar to change the key level.

2. Vocal Fading:

It provides the vocal removing function for any stereo music content (ex. Mp3 、WMA 、CD), you can use slider bar to change the vocal fading level.

2.2.9 Xear Surround Headphone



❖ Function Introduction

You can use this function to simulate a multi-speaker home theater surround listening experience by 2 channel (Stereo) Headphone device.

1. Enable Xear Surround

Click this check box to enable the Xear Surround sound effect.

2. Surround Max

Surround Max simulates a multi-channel source for improved sound surround.

3. Room Size:

Xear Surround Headphone provides 3 room size modes and one anechoic room. You can change the "Room Size Button" to simulate the difference room size and room type.

2.2.10 Xear Surround Speaker



❖ Function Introduction

You can use this function to simulate a multi-speaker home theater surround listening experience by 2 channel (Stereo) Speaker device.

1. Enable Xear Surround

Click this check box to enable the Xear Surround sound effect.

2. Surround Max

Surround Max simulates a multi-channel source for improved sound surround.

3. Sound Filed Expansion / Speaker Angle

Xear Surround Speaker provide the Sound Filed Expansion and Speaker Angle For user fine tune and it can improve the listening experience

2.3 SPDIF-Out Device function introduction

2.3.1 Volume control Page



❖ Function Introduction

This function page provides a volume control for SPDIF-Out device.

1. Volume control bar:

SPDIF-Out – You can use this bar to increase/decrease volume level.

2. Left/ Right Channel Lock:

Clicking on the lock/ un-lock button, it can lock left-channel and right-channel to sync L/R channel.

3. dB Input Area:

You can directly fill-in a dB value into this text box to set the volume level.

4. Mute / Un-mute:

Clicking on the mute/ un-mute button, it can mute SPDIF-Out.

2.3.2 Sample Rate Page



❖ Function Introduction

This function page provides a sample rate setting for SPDIF-Out device.

1. Sample Rate button

44.1 KHz - set playback sample rate to 44.1K

48 KHz - set playback sample rate to 48K

96 KHz - set playback sample rate to 96K

192 KHz - set playback sample rate to 192K

2. Bit Depth button

16bit - set playback bit depth to 16bit

24bit - set playback bit depth to 24bit

2.4 Mic 、 Line-in Device function introduction

2.4.1 Volume control Page



❖ Function Introduction

This function page provides the recording volume and monitor volume control for Microphone device.(Same as Line-in device)

1. Volume control bar:

Mic-In – It can adjust volume level for recording.

Monitor- It can adjust volume level for Mic-in monitor.

2. Left/ Right Channel Lock:

Clicking on the lock/ un-lock button, it can lock left-channel and right-channel.

3. Mute / Un-mute:

Clicking on the mute/ un-mute button, it can mute all channels.

4. dB Input Area

You can directly fill-in a dB value into this text box to set the volume level.

2.4.2 Sample Rate Page



❖ Function Introduction

This function page provides a sample rate setting for Microphone device.

1. Sample Rate button

44.1 KHz - set recording sample rate to 44.1K

48 KHz - set recording sample rate to 48K

96 KHz - set recording sample rate to 96K

192 KHz - set recording sample rate to 192K

2. Bit Depth button

16bit - set playback bit depth to 16bit

24bit - set playback bit depth to 24bit

2.4.3 Xear Magic Voice Page (Microphone device only)



❖ Function Introduction

When you are talking to your friends over the network like messenger, VOIP, online game applications, you can use “Magic Voice” effects to simulate some funny voice. Only one voice type can be chosen at one time.

1. Microphone Echo,

Click this check box to enable the Microphone echo effect; you can use the slider bar to change the echo level.

2. Magic Voice mode (Monster/Carton/Male/Female)

Click this check box to enable the Magic Voice effect; you can click on the any one button to set the magic voice mode.

2.5 SPDIF-In Device function introduction

2.5.1 Volume control Page



❖ Function Introduction

This function page provides the adjustment of recording volume for SPDIF-In device.

1. **Volume control bar:**
SPDIF-In – It can adjust volume level for recording.
2. **Left/ Right Channel Lock:**
Clicking on the lock/ un-lock button, it can lock left-channel and right-channel.
3. **dB Input Area**
You can directly fill-in a dB value into this text box to set the volume level.
4. **Mute / Un-mute:**
Clicking on the mute/ un-mute button, it can mute all channels.

2.5.2 Sample Rate Page



❖ Function Introduction

This function page provides a sample rate setting.

1. Sample Rate button

44.1 KHz - set recording sample rate to 44.1K

48 KHz - set recording sample rate to 48K

96 KHz - set recording sample rate to 96K

192 KHz - set recording sample rate to 192K

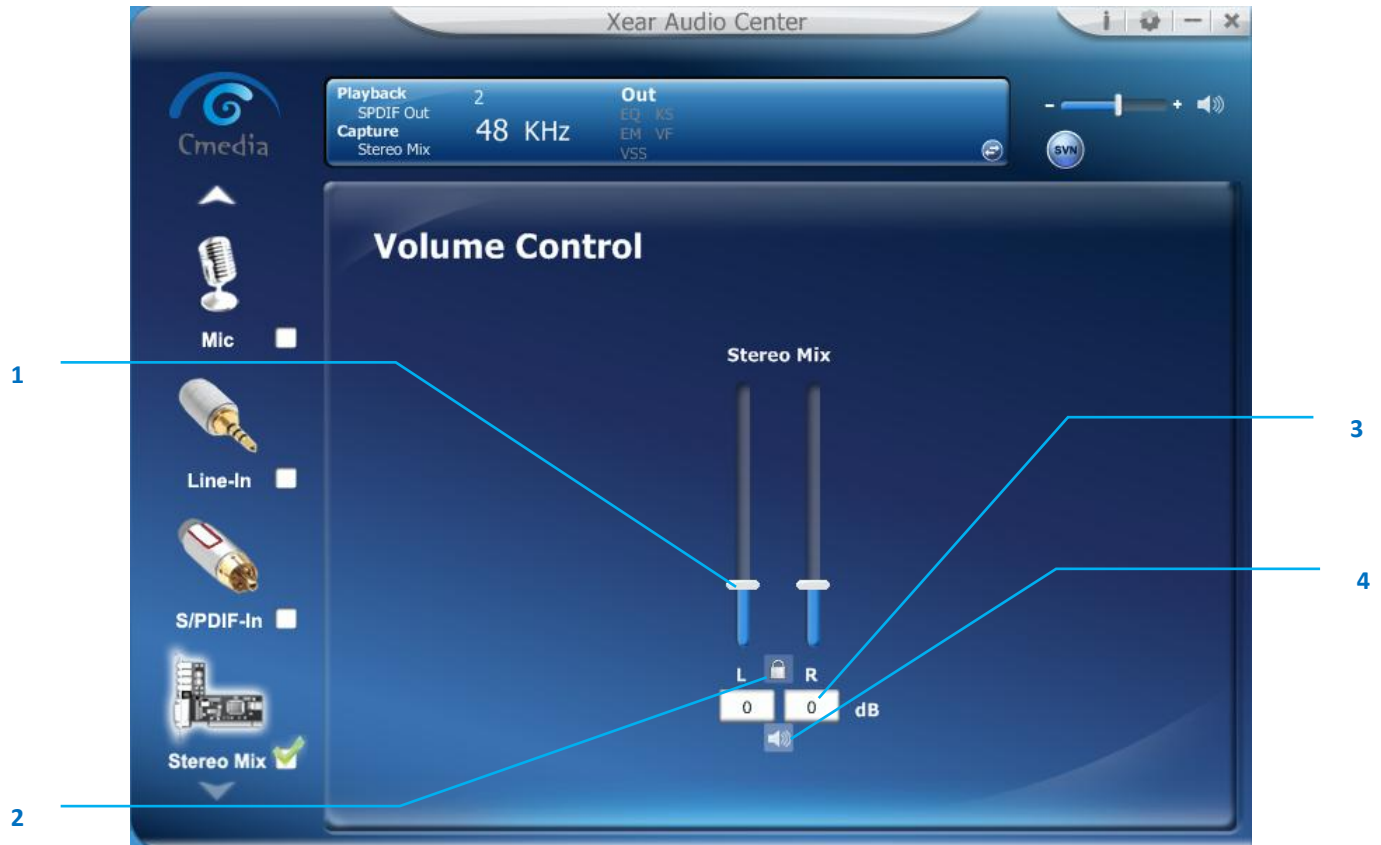
2. Bit Depth button

16bit - set recording bit depth to 16bit

24bit - set recording bit depth to 24bit

2.6 Stereo Mix Device function introduction

2.6.1 Volume control Page



❖ Function Introduction

This function page provides the adjustment of recording volume for Stereo Mix device.

1. Volume control bar:

Stereo Mix – It can adjust volume level for recording.

2. Left/ Right Channel Lock:

Clicking on the lock/ un-lock button, it can lock left-channel and right-channel.

3. dB Input Area

You can directly fill-in a dB value into this text box to set the volume level.

4. Mute / Un-mute:

Clicking on the mute/ un-mute button, it can mute all channels.

2.6.2 Sample Rate Page



❖ Function Introduction

This function page provides a sample rate setting.

1. Sample Rate button

44.1 KHz - set recording sample rate to 44.1K

48 KHz - set recording sample rate to 48K

96 KHz - set recording sample rate to 96K

192 KHz - set recording sample rate to 192K

2. Bit Depth button

16bit - set recording bit depth to 16bit

24bit - set recording bit depth to 24bit

2.7 Information Page Introduction

This page lists the driver information and the technologies' trademark logo. You can get both hardware/software details and also legal information references here.

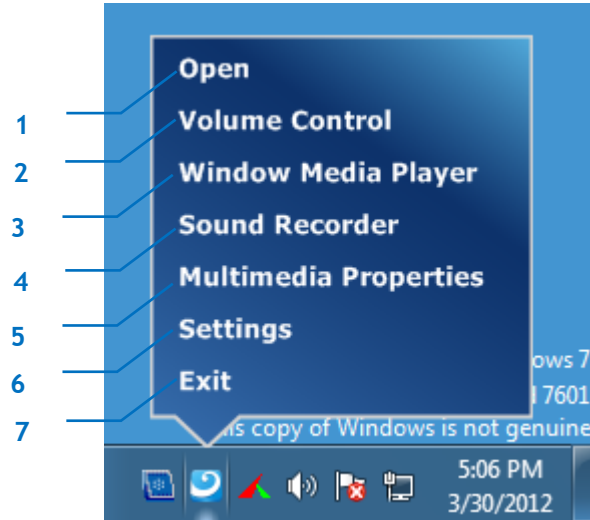


Detail:



2.8 Tray Icon Function Introduction

Open the “CPL Tray Icon Function List” by right-clicking on the tray Icon on system tray.

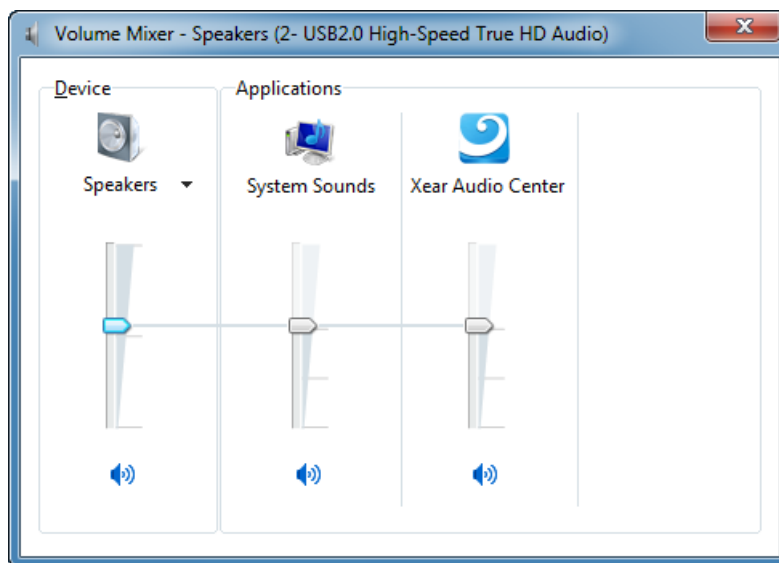


1. Open:

When click the “Open” item, will restore the USB Audio Software CPL.

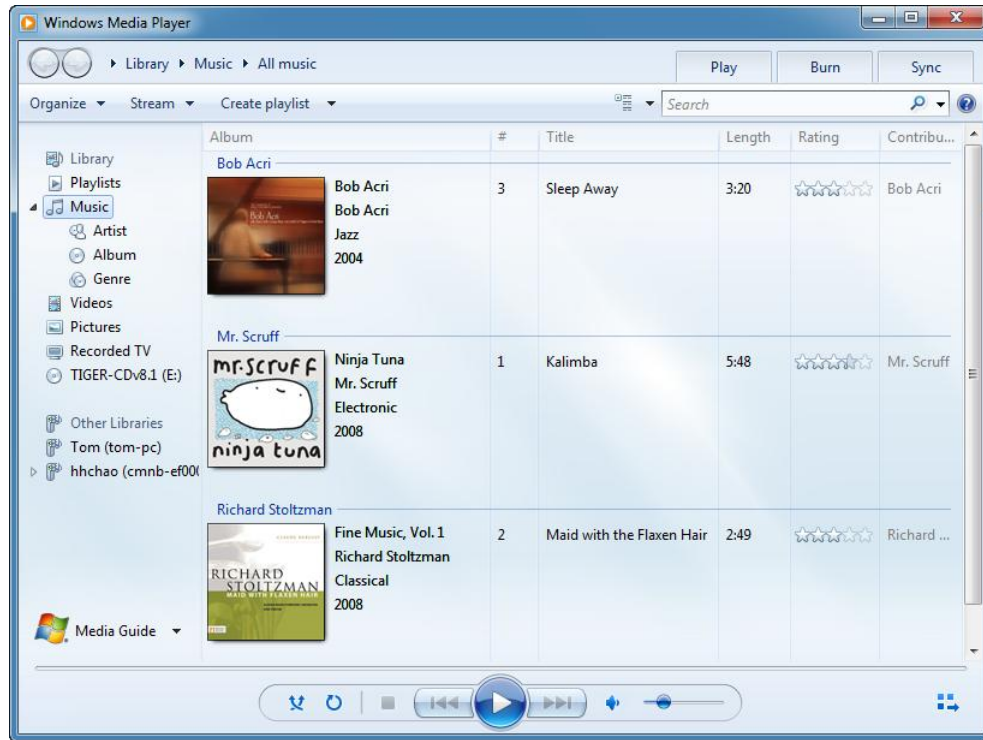
2. Volume Control:

When click the “Volume Control” item, will open the Volume Mixer of Windows OS, if you want to separately control the volume of your speakers and other sound devices or programs using this Volume Mixer.



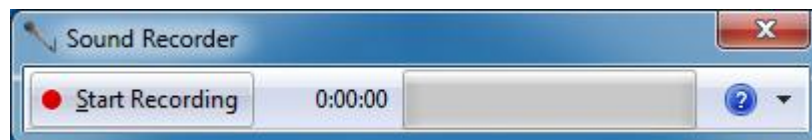
3. Windows Media Player:

When click the “Windows Media Player” item, will open the Microsoft Windows Media Player.



4. Sound Recorder:

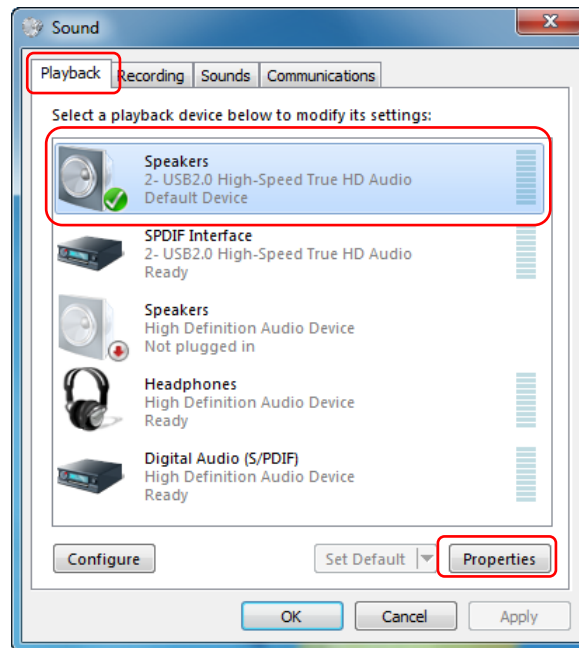
Click the “Sound Recorder” item to open the Windows Sound recorder.



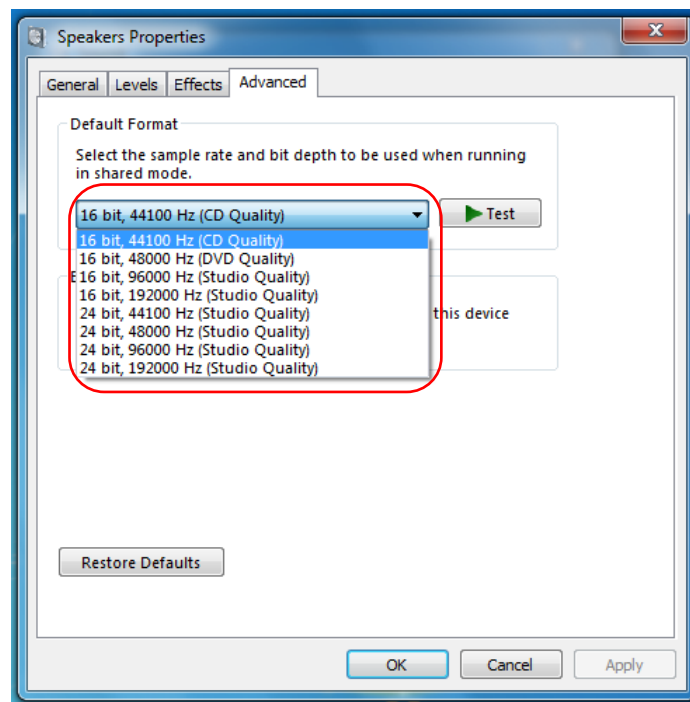
5. Multimedia Properties:

Open the multimedia properties page of Windows OS, you can select the working sample rate & bit rate on the property page.

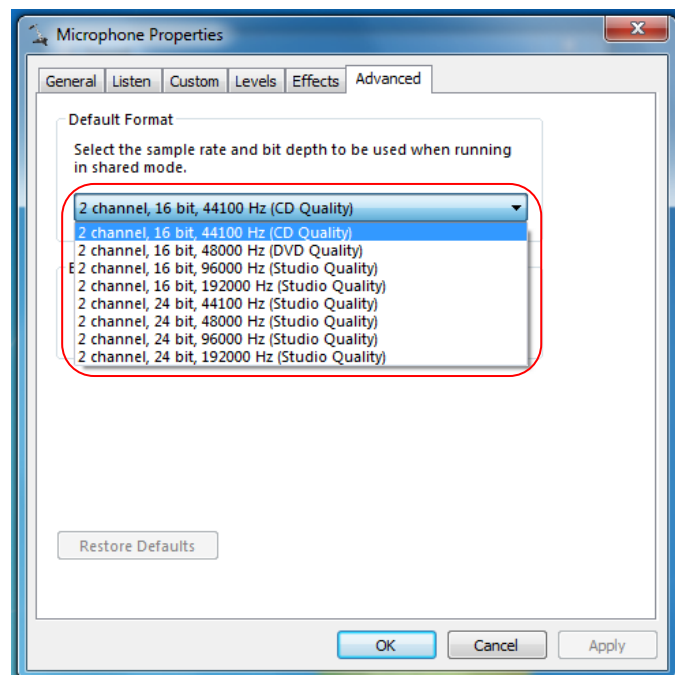
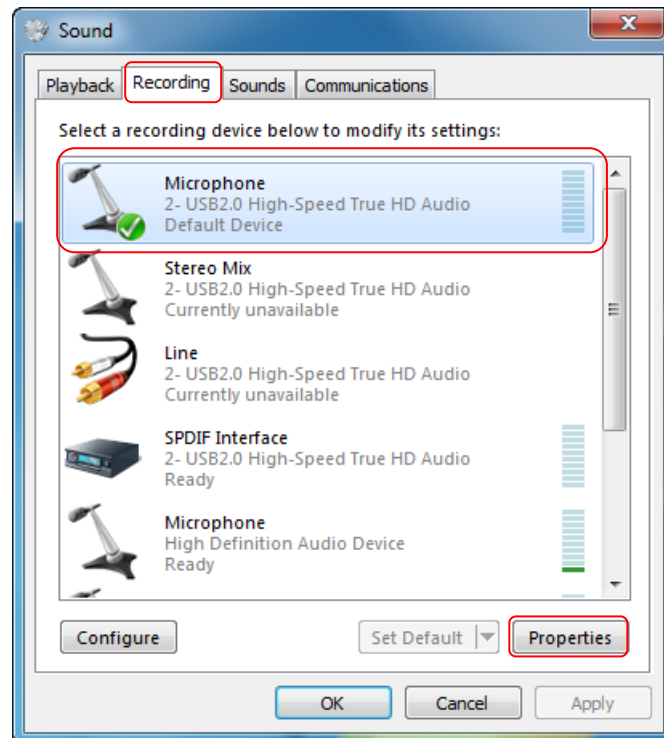
- I. Select the “Speakers” device and then click the “properties” button.



- II. Click the tag of “Advanced”, enter the advanced page, and click the dropdownlist to open default format support list as below diagram.

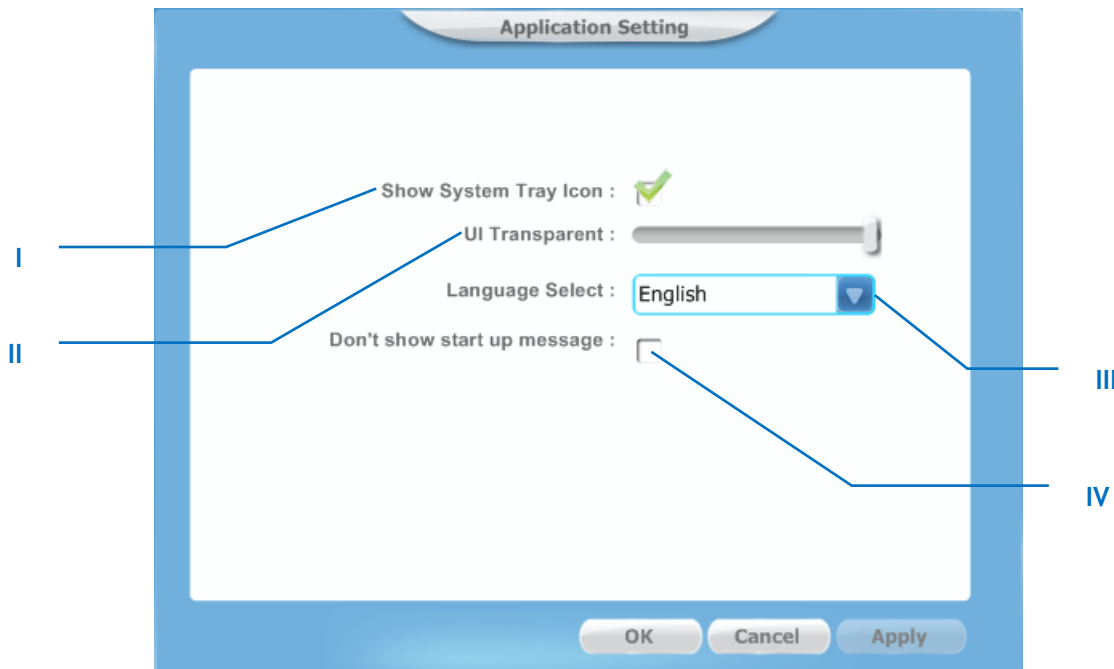


- III. Please follow the same step to change the sample rate & bit rate for “Microphone” device on recording tag.



6. Setting

Click setting item to open the “Xear Audio Center” setting page as below.



- I. Show System Tray Icon – Check “Show System Tray Icon” box, the Xear Audio center icon will show in the system tray.



- II. UI Transparent – It can adjust the UI vision of transparent
- III. Language Select – it can change the UI language. (Refer to [Appendix A](#))
- IV. Don't show start up message – it can open/close the UI start-up message.

7. Exit:

When click the “Exit” item, will exit the tray Icon from system tray.

Appendix A - Multi-Lingual Supporting List

C-Media USB/PCI Audio Driver Multi-Lingual Supporting List

- Support 17 languages.
- Detail information:

- 1 English - English
- 2 German - Deutsch
- 3 French - Français
- 4 Portuguese - Português
- 5 Spanish - Español
- 6 Russian - русский язык
- 7 Italian - Italiano
- 8 Dutch - Nederlands
- 9 Indonesian - Bahasa Indonesia
- 10 Danish - Dansk
- 11 Chinese - Traditional
- 12 Chinese - Simplified
- 13 Korean - 한국어 (韓國語)
- 14 Japanese-日本語
- 15 Swedish - Svenska
- 16 Turkish - Türkçe
- 17 Thai- ไทย

Install program will install the corresponding language package base on the detected OS language.