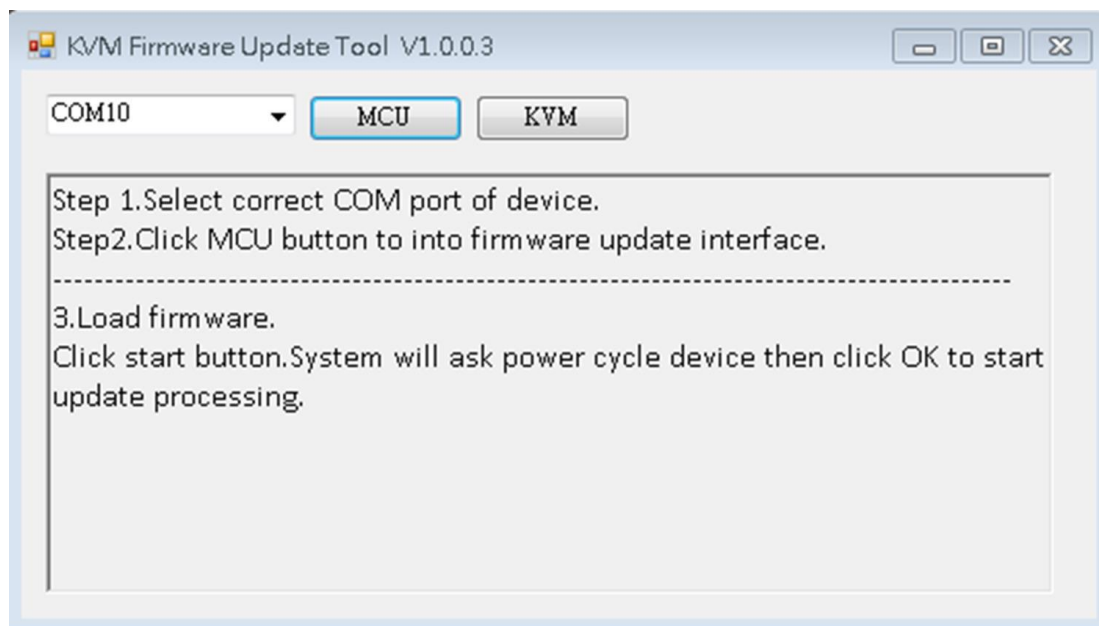
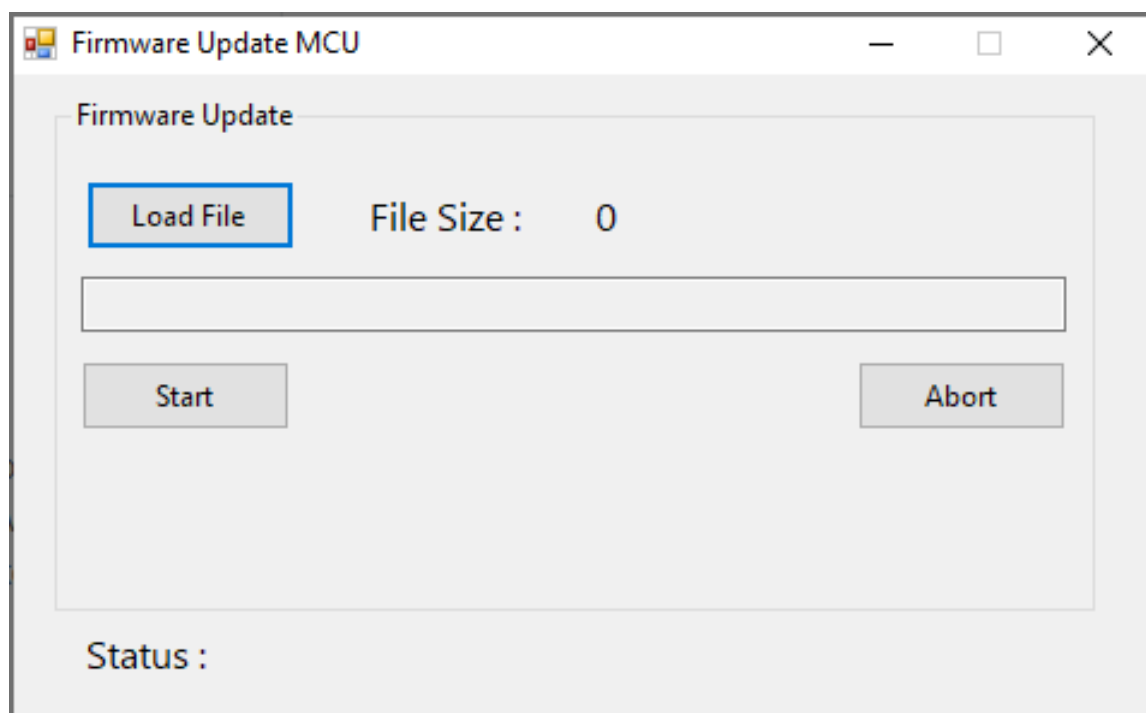


MCU Update

- 1) Save the files to your hard drive.
- 2) Power OFF the KVM.
- 3) Set DIP switch PIN# 2 to ON (down).
- 4) Power ON the KVM and connect micro USB to PC's USB port.
- 5) Double click "KVM Update Tool.exe".
- 6) Select the correct COM port.

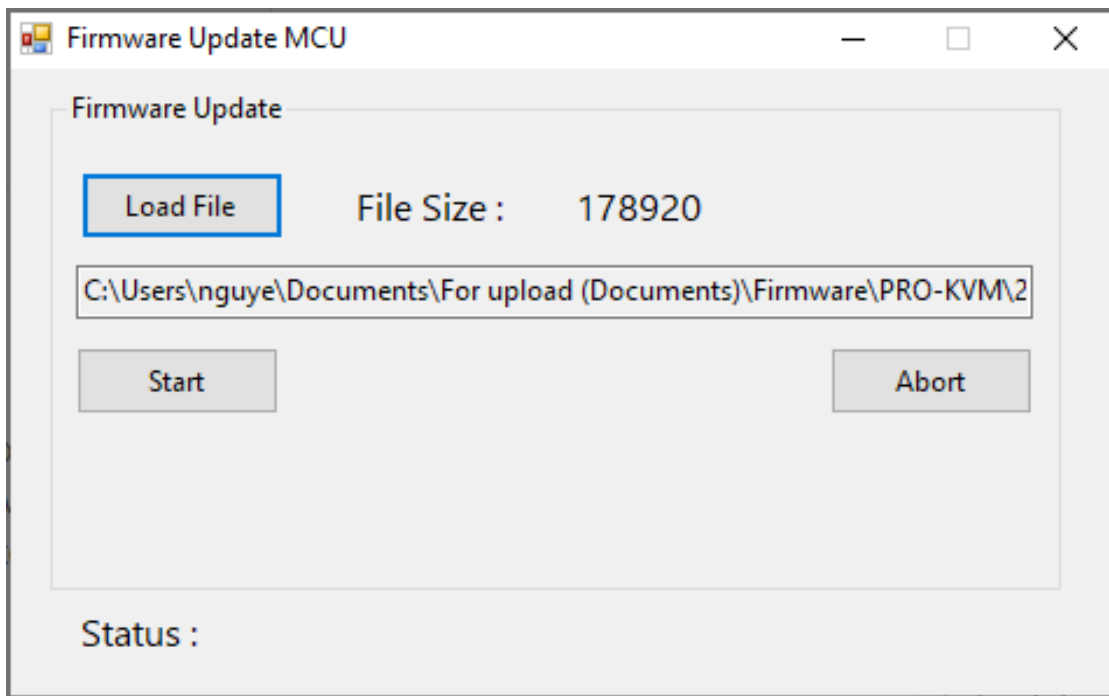


- 7) Click on the **MCU** button to get into the firmware update interface.

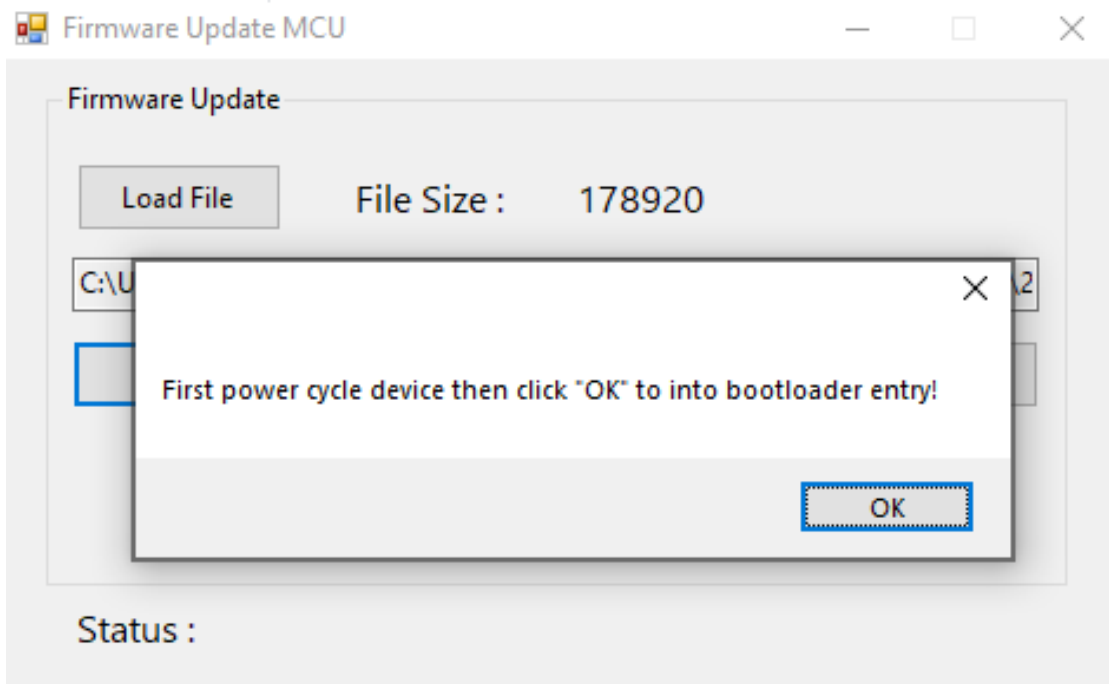


8) Click on the **Load File** button to load firmware file.

9) Select the .hex file "**2P_FW_200921A.hex**".



10) Click **Start** button.



11) Power cycle the device then click "OK".

12) MCU update automatically starts, and completes within a minute.

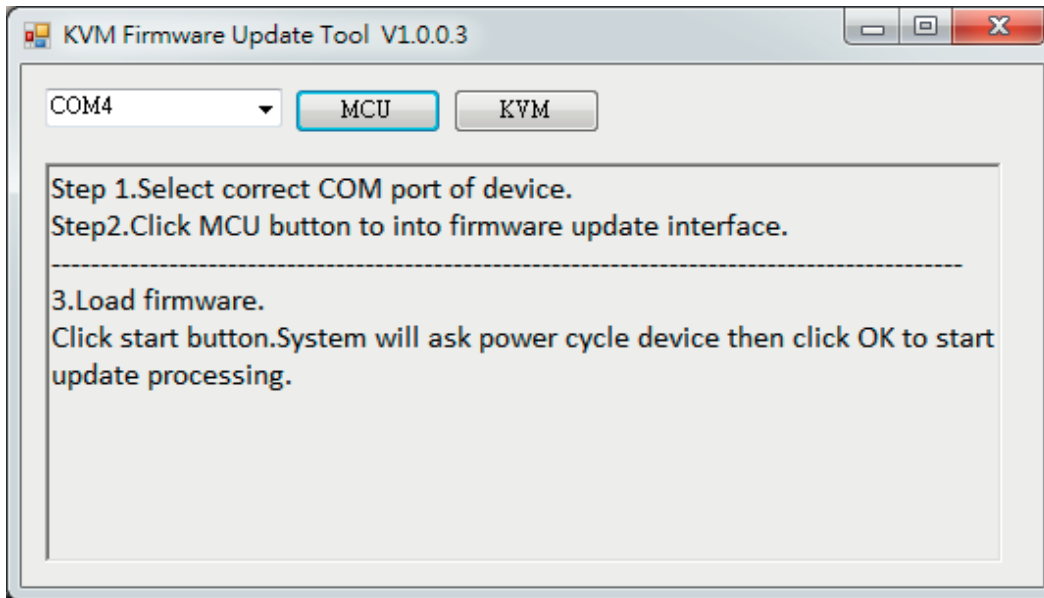
13) Power OFF the KVM.

14) Set DIP switch PIN# 2 to OFF (up).

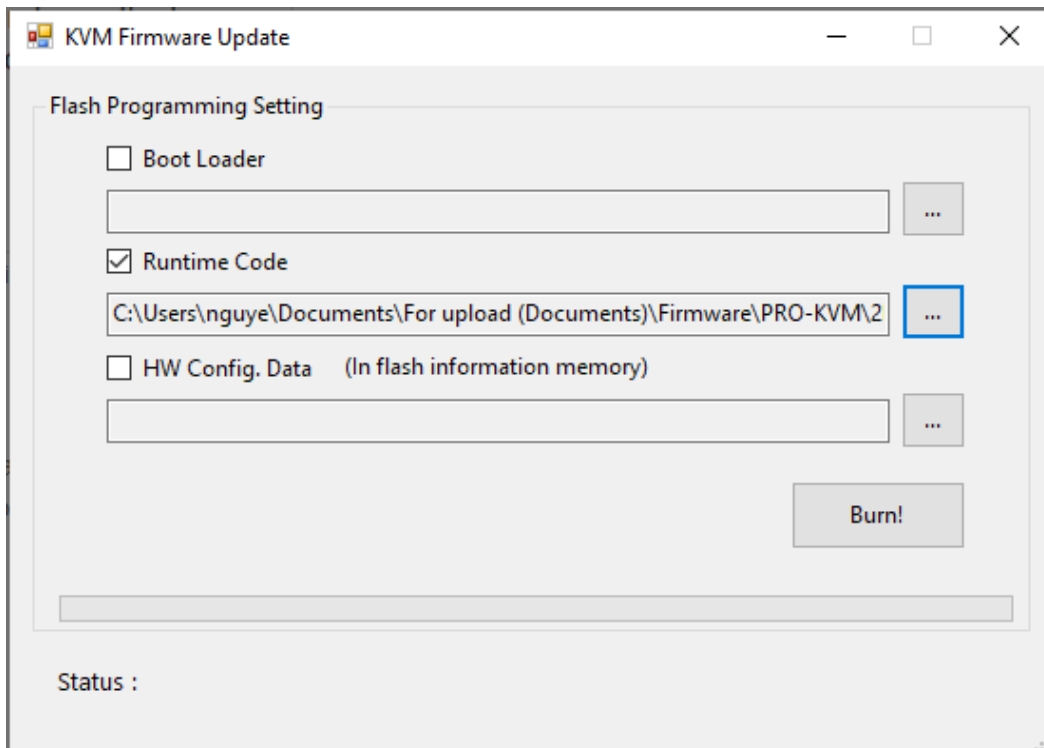
15) Continue to the KVM update section. Keep the USB cable plugged in.

KVM Update

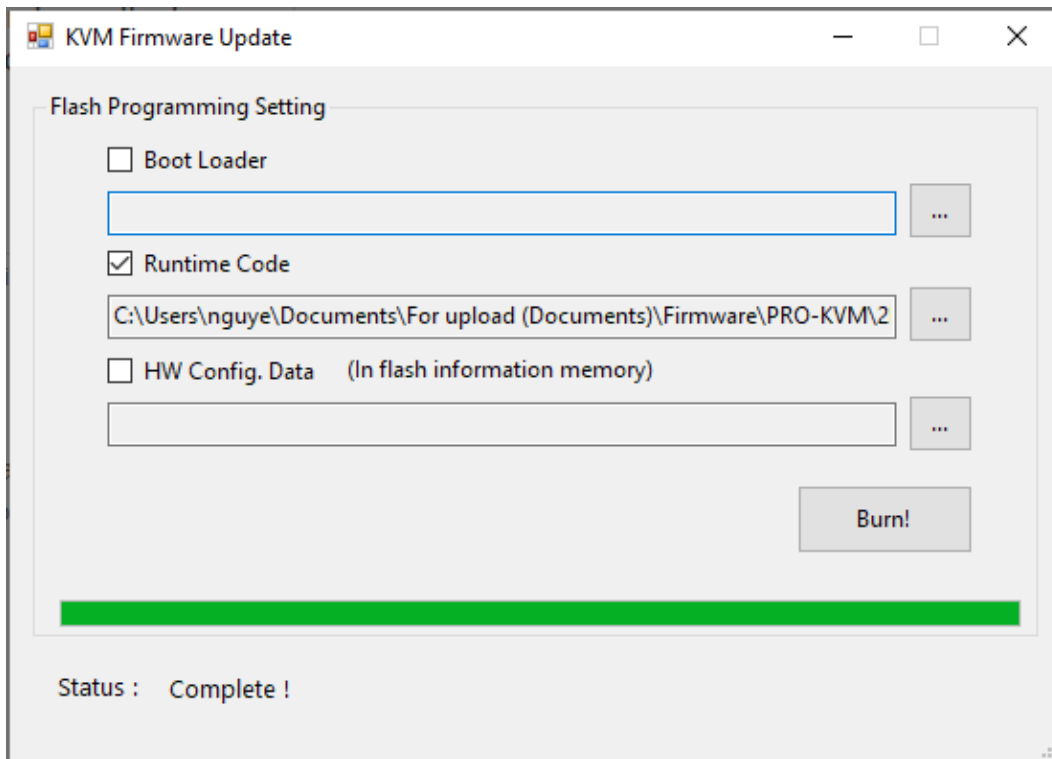
- 16) Set DIP switch PIN# 1 to ON (down).
- 17) Power ON the KVM.
- 18) Relaunch “KVM Update Tool.exe”.
- 19) Click on the **KVM** button to open “KVM Firmware Update” window.



- 20) Check Runtime Code and click the “...” button.
- 21) Select the file “2P_MB_200923A.bin”.



- 22) Click the “Burn!” button to start firmware update. Wait for the process to finish.



- 23) KVM update is complete.
- 24) Power OFF the KVM.
- 25) Set DIP switch PIN# 1 to OFF (up).

The software update process is now complete.