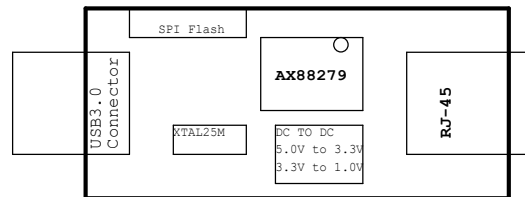


# AX88279 Demo Board Schematic

Page 1  
System Block (This Page)

Page 2  
AX88279  
SPI Flash  
25MHz Crystal  
USB/RJ-45 Connectors  
Power Circuit  
SY8089A

Page 3  
Revision History



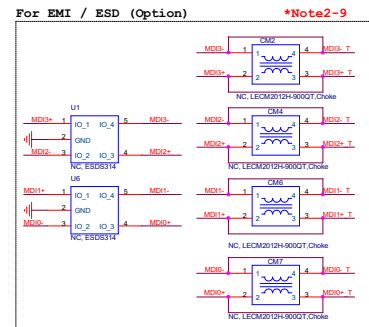
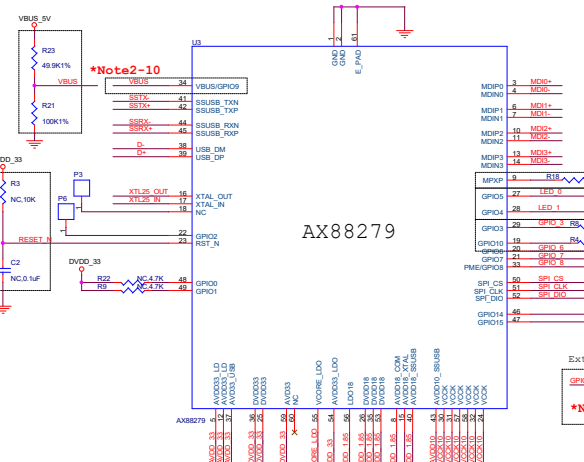
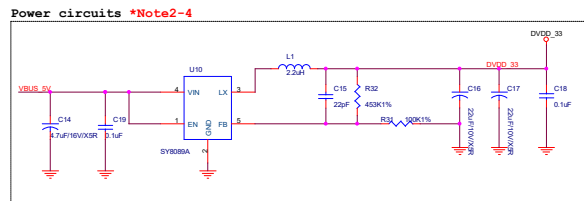
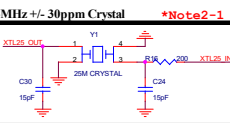
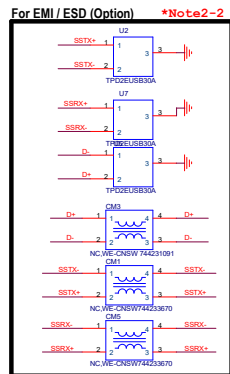
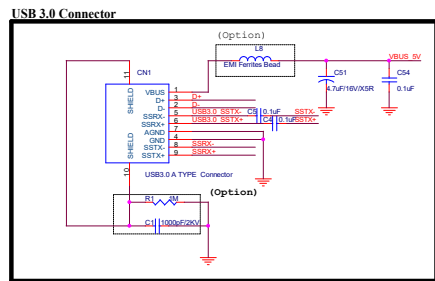
## Note:

1. Please refer to AX88279 USB 3.2 Gen1 to 2.5 Gigabit Ethernet Application Design Note for more AX88279 PCB layout design notes.

2. Please deliver us your AX88279 schematic and PCB layout file for further review.

3. Please do full functionalities testing on your own AX88279 board before running into production stage.

ASIX ELECTRONICS CORPORATION		
Title System Block		
Size B	Document Number AX88279 Demo Board	Rev 1.03
Date:	Tuesday, October 24, 2023	Sheet 1 of 3



Revision History

Revision	Date	Comment
V1.00	2023/02/23	Initial release.
V1.01	2023/03/20	1.Added Note 2-12 in Page 2. 2.Modified some description in Note 2-8.
V1.02	2023/05/10	Added LED_2 and USB 3.0 LED circuit in page 2.
V1.03	2023/10/24	Added EMI circuit in LED0 & LED1.

ASIX ELECTRONICS CORPORATION		
Title Revision History		
Size A	Document Number AX88279 Demo Board	Rev 1.03
Date:	Tuesday, October 24, 2023	Sheet 3 of 3