



# USB 3.0 to IDE/SATA 6Gb/s 2.5" Enclosure Quick Installation Guide

## **Introduction**

---

The *USB 3.0 to IDE/SATA 6Gb/s 2.5"* provides large capacity mobile storage using 2.5" SATA or IDE hard disk drives through hot-swapping SuperSpeed USB 3.0 interface.

## **Key Features and Benefits**

- Supports USB 3.0 data transfer rate up to 6Gb/s
- Dual interface support both IDE and SATA types of hard disk drive
- Push-n-Lock/Unlock chassis design allows quick access to the drive

**Note:** For maximum data throughput, use a SATA 3Gb/s or 6Gb/s hard disk with the enclosure and connect to a fully functional USB 3.0 port.

## System Requirements

- Notebook or desktop PC with an available USB 2.0/3.0 port (USB 3.0 recommended)
- Windows® 8 (32-/64-bit) / 7 (32-/64-bit) / Vista (32-/64-bit) / XP (32-/64-bit) / Server 2003 & 2008 (32-/64-bit) / Server 2008 R2

## Package Contents

- *USB 3.0 to IDE/SATA 6Gb/s 2.5" Enclosure*
- USB 3.0 Y-split (data & power) cable
- Installation kit
- Quick installation guide

## Layout

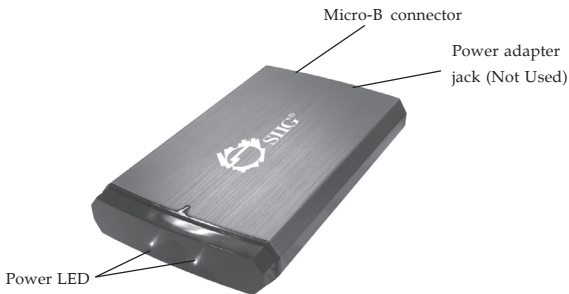


Figure 1: Layout

## Power and Activity LED

The LED indicator illuminates two solid blue when the enclosure is connected and powered up. Three additional LED flashes during data transfer. Do not disconnect the enclosure while the LED is flashing.

**Note:** The three additional LED flashes continuously after a data transfer. It will eventually stop on its own. It also flashes after the system has been restarted or when the system is booting up after shutdown.

## USB 3.0 Y-split Cable

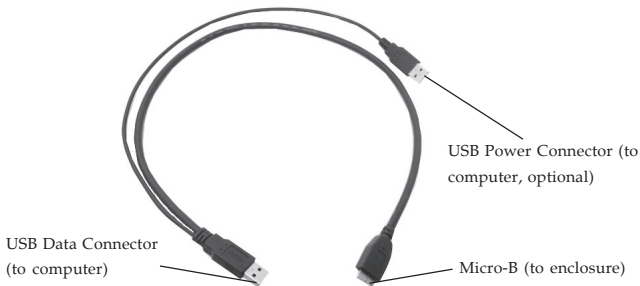


Figure 2: USB 3.0 Y-split Cable

## Hardware Installation

---

The following section guides you through the installation of your drive kit.

### Installing a 2.5" Hard Drive

1. Remove the top cover by sliding the lock on the bottom of the enclosure.
2. Slide in either SATA or IDE hard disk drive into the hard disk drive tray and make sure the connector properly fits into the backplane, see **Figure 3**.

**Note:** This enclosure supports hard drive height of 12.5mm or less.

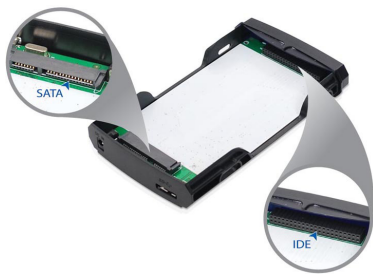
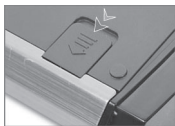


Figure 3

3. Hold onto the hard disk drive and turn hard disk drive tray side ways. Secure the hard disk drive with four mounting screws.
4. Slide the top cover back into the case and secure it by sliding the lock on the bottom of the enclosure, see **Figure 4**.



**Figure 4**

5. Connect the Micro-B connector of the included USB 3.0 Y-split cable into the Micro-B connector of the enclosure. See **Figure 2** in page 3 for more information.
6. Connect the Type-A, USB Data connector of the included USB 3.0 Y-split cable to an available USB port of the computer (USB 3.0 recommended). See **Figure 2** in page 3 for more information.

**Important:** In most cases the **USB Data Connector** will supply enough power to the enclosure. If not, use the optional **USB Power Connector** to supply more power. Before proceeding, first unplug the **USB Data Connector**, then plug the **USB Power Connector** into an available USB port, then re-plug the **USB Data Connector**.

7. *USB 3.0 to IDE/SATA 6Gb/s 2.5" Enclosure* will turn on automatically. Make sure that the two **LED** is lit.

Go to **Driver Installation** to complete the installation.

## **Driver Installation**

---

Windows will automatically detect and install drivers for the *USB 3.0 to IDE/SATA 6Gb/s 2.5" Enclosure* when connected. No additional driver installation is needed.

## **Using the *USB 3.0 to IDE/SATA 6Gb/s 2.5" Enclosure***

---

An additional drive icon will appear in **My Computer** or **Computer** when the enclosure is plugged into a USB port. The drive acts just like a conventional hard drive in your system.

### **Disconnecting From The Computer**

Before unplugging the *USB 3.0 to IDE/SATA 6Gb/s 2.5" Enclosure* from the computer, follow the steps below for your version of Windows. *Not following the instructions may result in data corruption or damage to the hard disk drive.*

#### **Windows 8 / 7 / Server 2008 R2**

1. Verify that the **three LEDs** are not flashing before proceeding.
2. Click **Show hidden icons**, click the **Safely Remove Hardware and Eject Media** icon located in the system tray by the system clock.
3. Click **Eject USB Mass Storage Device**.
4. You can now unplug the *USB 3.0 to IDE/SATA 6Gb/s 2.5" Enclosure*.

## Windows Vista / Server 2008

1. Verify that the **three LEDs** are not flashing before proceeding.
2. Click the **Safely Remove Hardware** icon located in the system tray by the system clock.
3. Click **Safely remove USB Mass Storage Device**, then click **OK**.
4. You can now unplug the *USB 3.0 to IDE/SATA 6Gb/s 2.5" Enclosure*.

## Windows XP / Server 2003

1. Verify that the **three LEDs** are not flashing before proceeding.
2. Double click the **Safely Remove Hardware** icon located in the system tray by the system clock.
3. Highlight **Mass Storage Device**, click **Stop**, **OK**, then **Close**.
4. You can now unplug the *USB 3.0 to IDE/SATA 6Gb/s 2.5" Enclosure*.



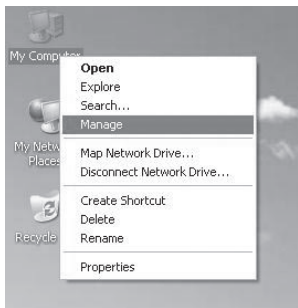
**Note:** All **five LEDs** will light up during the process of unplugging the enclosure from the computer. This is normal.

## Hard Disk Drive Formatting Guide

---

This section will show you how to format your hard disk drive. Make sure the enclosure is connected to your PC before formatting the hard disk drive. Use this guide to format new hard disk drives only. Do not use on drives that contain data.

1. Right click **My Computer** or **Computer**, then click **Manage**, see **Figure 5**.



**Figure 5**

2. Click **Continue**. Skip this step if not prompted.
3. Click **Disk Management**. You will see your hard disk drive shown as **Unallocated**. For *Windows Server 2008*, you need to double click **Storage** first to see **Disk Management**. Disk number may vary, see **Figure 6**.

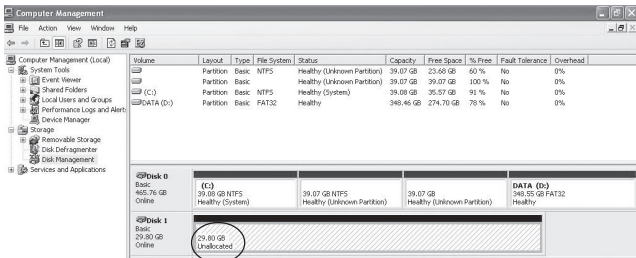


Figure 6

4. Right click on the **Unallocated** box and select **New Simple Volume** or **New Partition**, see **Figure 7** in the next page.

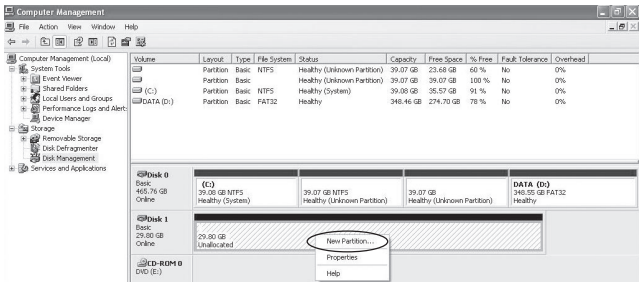


Figure 7

5. The **New Simple Volume Wizard** or **New Partition Wizard** will appear. Please follow the **New Simple Volume Wizard** or **New Partition Wizard** step by step instruction to complete the hard disk drive formatting procedure, see **Figure 8**.

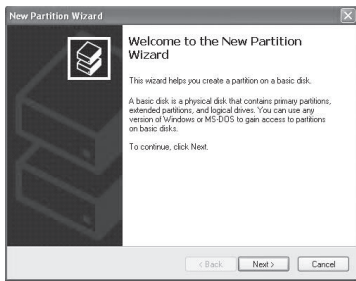


Figure 8

6. Once the hard disk drive formatting procedure is completed, the hard disk drive will be recognized as a **New Volume**. The **New Volume** drive letter may vary, see **Figure 9**.

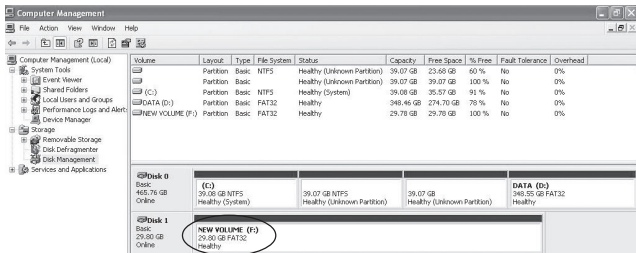


Figure 9

7. Double click **My Computer** or **Computer**. You will see the **New Volume** appear on your PC. Drive letter may vary.

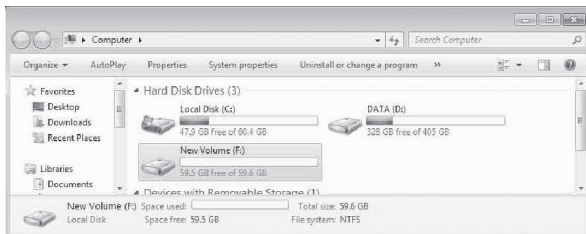


Figure 10

**Blank Page**

**Blank Page**

# Technical Support and Warranty

---

**QUESTIONS?** SIIG's **Online Support** has answers! Simply visit our web site at [www.siig.com](http://www.siig.com) and click **Support**. Our online support database is updated daily with new drivers and solutions. Answers to your questions could be just a few clicks away. You can also submit questions online and a technical support analyst will promptly respond.

SIIG offers a 3-year manufacturer warranty with this product. This warranty covers the original purchaser and guarantees the product to be free of any defects in materials or workmanship for three (3) years from the date of purchase of the product.

SIIG will, at our discretion, repair or replace (with an identical product or product having similar features and functionality) the product if defective in materials or workmanship. This warranty gives you specific legal rights, and you may also have other rights which vary from state to state. Please see our web site for more warranty details.

If you encounter any problems with this product, please follow the procedures below.

A) If it is within the store's return policy period, please return the product to the store where you purchased from.

B) If your purchase has passed the store's return policy period, please follow the steps below to have the product repaired or replaced.

**Step 1:** Submit your RMA request.

Go to [www.siig.com](http://www.siig.com), click **Support**, then **REQUEST A PRODUCT REPLACEMENT** to submit a request to [SIIG RMA](#) or fax a request to 510-657-5962. Your RMA request will be processed, if the product is determined to be defective, an RMA number will be issued.

**Step 2:** After obtaining an RMA number, ship the product.

- Properly pack the product for shipping. All accessories that came with the original package must be included.
- Clearly write your RMA number on the top of the returned package. SIIG will refuse to accept any shipping package, and will not be responsible for a product returned without an RMA number posted on the outside of the shipping carton.
- You are responsible for the cost of shipping to SIIG. Ship the product to the following address:

**SIIG, Inc.**

**6078 Stewart Avenue**

**Fremont, CA 94538-3152, USA**

**RMA #: \_\_\_\_\_**

- SIIG will ship the repaired or replaced product via Ground in the U.S. and International Economy outside of the U.S. at no cost to the customer.

## About SIIG, Inc.

---

Founded in 1985, SIIG, Inc. is a leading manufacturer of IT connectivity solutions (including Serial ATA and Ultra ATA Controllers, FireWire, USB, and legacy I/O adapters) that bridge the connection between Desktop/ Notebook systems and external peripherals. SIIG continues to grow by adding A/V and Digital Signage connectivity solutions to our extensive portfolio. SIIG products offer comprehensive user manuals, many user-friendly features, and are backed by an extensive manufacturer warranty. High quality control standards are evident by the overall ease of installation and compatibility of our products, as well as one of the lowest defective return rates in the industry. SIIG products can be found in computer retail stores, mail order catalogs, through major distributors, system integrators, and VARs in the Americas and the UK, and through e-commerce sites.

### **PRODUCT NAME**

USB 3.0 to IDE/SATA 6Gb/s 2.5" Enclosure

**FCC RULES: TESTED TO COMPLY WITH FCC PART 15, CLASS B  
OPERATING ENVIRONMENT: FOR HOME OR OFFICE USE**

### **FCC COMPLIANCE STATEMENT:**

This device complies with part 15 of the FCC Rules. Operation is subject to the following two conditions: (1) This device may not cause harmful interference, and (2) this device must accept any interference received, including interference that may cause undesired operation.

### **THE PARTY RESPONSIBLE FOR PRODUCT COMPLIANCE**

SIIG, Inc.  
6078 Stewart Avenue  
Fremont, CA 94538-3152, USA  
Phone: 510-657-8688

USB 3.0 to IDE/SATA 2.5" Enclosure is a trademark of SIIG, Inc. SIIG and the SIIG logo are registered trademarks of SIIG, Inc. Microsoft and Windows are registered trademarks of Microsoft Corporation. All other names used in this publication are for identification only and may be trademarks of their respective owners.

October, 2012

Copyright © 2012 by SIIG, Inc. All rights reserved.