



Industrial USB to RS-422/ 485 Serial Adapter Cable with 3KV Isolation Protection Quick Installation Guide

Introduction

The *Industrial USB to RS-422/485 Serial Adapter Cable with 3KV Isolation Protection* provides additional RS-422/485 port(s) with 3KV isolation protection to PC or Mac systems.

Key Features and Benefits

- Adds additional RS-422/485 port(s) with 3KV Isolation to PC or MAC
- Built in 15KVDC ESD serial interface protection
- Supports USB plug-n-play installation

System Requirements

- Windows® 8 (32-/64-bit) / 7 (32-/64-bit) / Vista (32-/64-bit) / XP (32-/64-bit) / Server 2003 & 2008 (32-/64-bit) / Server 2008 R2 / 2000

- Mac OS X v10.1 or later
- Desktop or notebook computer with an available USB 2.0 port

Package Contents

- *Industrial USB to RS-422/485 Serial Adapter with 3KV Isolation Protection*
- 5-pin terminal block (1pcs for ID-SC0B11-S1; 2pcs for ID-SC0C11-S1; 4pcs for ID-SC0D11-S1)
- Driver CD
- Quick installation guide

Layout

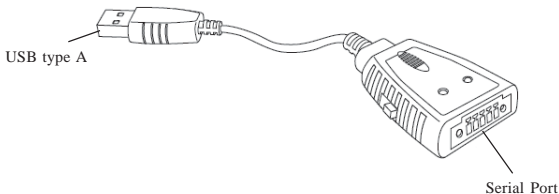


Figure 1: ID-SC0B11-S1 Layout

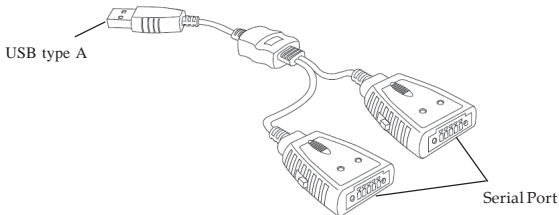


Figure 2: ID-SC0C11-S1 Layout

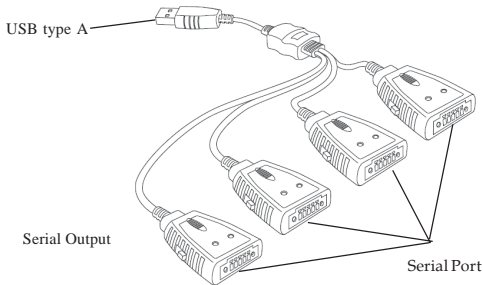


Figure 3: ID-SC0D11-S1 Layout

Note: Switch to right for RS-422 output;
switch to left for RS-485, see Figure 4.

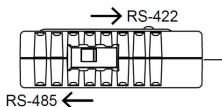
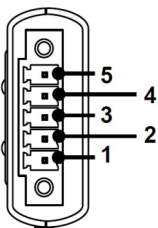


Figure 4

Pin Assignment



Pin	RS-422	RS-485
1	TX-	D-
2	TX+	D+
3	RX-	
4	RX+	
5	GND	GND

Figure 5: Pin Assignment

Windows Installation

Follow the instructions below to install the *Industrial USB to RS-422/485 Serial Adapter Cable* driver.

Windows 8 (32-/64-bit) / Windows 7 (32-/64-bit)

- For Windows 8: Insert the driver CD. At the **AutoPlay** box, double click **Setup** file. **Note**: If prompted, click on the Removable Drives setup box, then click on **Open folder to view files**.
For Windows 7: Insert the driver CD. At the **AutoPlay** box, click **Open folder to view files**, then double click **Setup** file.

2. At the **User Account Control**, click **Yes**, then click **Next**.
3. Click **Finish**.
4. Connect the adapter to the computer and the driver will be installed automatically.

Windows Vista (32-/64-bit)

1. Insert the driver CD. Double click **Setup** file at the prompted window.
2. At **User Account Control**, click **Allow**.
3. Click **Next**, and click **Finish**.
4. Connect the adapter to the computer and the driver will be installed automatically.

Windows XP (32-/64- bit) / Server 2008 (32-/64-bit)

1. Insert the driver CD.
2. At the prompted window, double click **Setup** file.

If the window not prompted, click **Start**, **Run**, type **D:\Setup.exe**, then click **OK**.

(Change **D:** to match your CD/DVD-ROM drive letter)

3. At **PL-2303 Install Program** window, click **Next**, then click **Finish**.
4. Connect the adapter to the computer and the driver will be installed automatically.

Windows Server 2003 (32-/64-bit) / 2000

1. Insert the driver CD.
2. Click **Start**, **Run**, type **D:\Setup.exe**, then click **OK**. (Change **D:** to match your CD/DVD-ROM drive letter)
3. At **PL-2303 Install Program** window, click **Next**, then click **Finish**.
4. Connect the adapter to the computer and the driver will be installed automatically.

Windows Server 2008 R2

1. Insert the driver CD. At the **AutoPlay** box, click **Open folder to view files**.
2. Double click **Setup** file.
3. At **PL-2303 Driver Installer Program**, click **Next**, then click **Finish**.
4. Connect the adapter to the computer and the driver will be installed automatically.

To Verify Windows Installation

1. Go to Device Manager to verify installation.
For Windows 7 / XP / 2003 / 2008 R2 / 2000: Right click **Computer** or **My Computer**, click **Manage**, click **Device Manager**.
For Windows Vista: Right click **Computer**, click **Manage**, click **Continue**, then click **Device Manager**.
For Windows Server 2008: Right click **Computer**, click **Manage**, then double click **Diagnostics**, and click **Device Manager**.
2. Double click **Ports (COM & LPT)**, and **Prolific USB-to Serial Comm Port** should be displayed.

Mac OS Installation

1. Insert the driver CD.
2. For MAC OS v10.1 to v10.5: Open the CD and navigate to **Drivers \ Mac \ Mac 10.4.x**. Double click **PL2303_1.2.1r2.dmg**.
For MAC 10.6.x or later: Open the CD and navigate to **Drivers \ Mac \ Mac 10.6.x**, then double click **PL2303_1.4.0.dmg**.
3. At the prompted window, double click **PL2303_1.2.1** or **PL2303_1.4.0**
4. At **Introduction**, click **Continue**.
5. For MAC OS 10.4, click **Continue** at **Select Destination**. For others, skip this step.
6. At **Installation Type**, click **Change Install location** if you want to change the default saving folder; otherwise, click **Install or Upgrade**.
7. Enter **Name** and **Password**, then click **OK** or **Install Software**.
8. Click **Continue Installation**.
9. At the **Summary or Finish Up**, click **Restart** to restart the computer.

10. After the system resumes, plug the adapter cable into any USB port. The device is ready for use.

To Verify MAC OS Installation

1. Go to **Application, Utilities, System Profiler** or **System Information**. Click **USB** from the sidebar, and you'll see **USB-Serial Controller D** under the **USB Bus**.

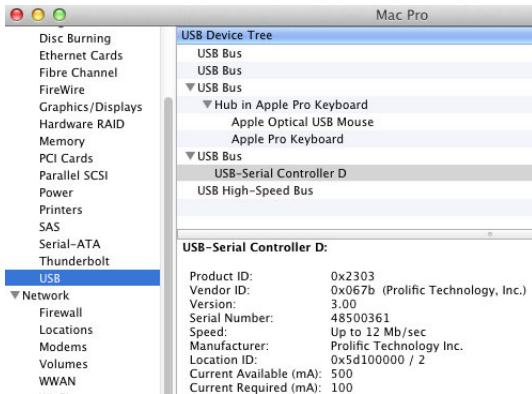
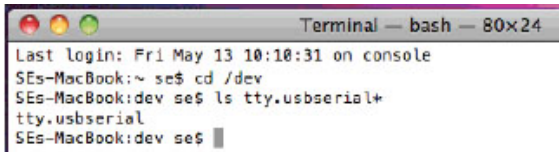


Figure 6

2. Go to **Application, Utility, Terminal**. Type in commands `cd /dev` and `ls tty.usbserial*`, you will see `tty.usbserial`, which means the adapter cable is ready to use.

A screenshot of a macOS Terminal window. The title bar reads "Terminal — bash — 80x24". The terminal content shows the following sequence of commands and output:

```
Last login: Fri May 13 10:10:31 on console
SEs-MacBook:~ se$ cd /dev
SEs-MacBook:dev se$ ls tty.usbserial*
tty.usbserial
SEs-MacBook:dev se$
```

Figure 7

Technical Support and Warranty

QUESTIONS? SIIG's **Online Support** has answers! Simply visit our web site at www.siig.com and click **Support**. Our online support database is updated daily with new drivers and solutions. Answers to your questions could be just a few clicks away. You can also submit questions online and a technical support analyst will promptly respond.

SIIG offers a 3-year manufacturer warranty with this product. This warranty covers the original purchaser and guarantees the product to be free of any defects in materials or workmanship for three (3) years from the date of purchase of the product.

SIIG will, at our discretion, repair or replace (with an identical product or product having similar features and functionality) the product if defective in materials or workmanship. This warranty gives you specific legal rights, and you may also have other rights which vary from state to state. Please see our web site for more warranty details.

If you encounter any problems with this product, please follow the procedures below.

A) If it is within the store's return policy period, please return the product to the store where you purchased from.

B) If your purchase has passed the store's return policy period, please follow the steps below to have the product repaired or replaced.

Step 1: Submit your RMA request.

Go to www.siig.com, click **Support**, then **REQUEST A PRODUCT REPLACEMENT** to submit a request to **SIIG RMA** or fax a request to 510-657-5962. Your RMA request will be processed, if the product is determined to be defective, an RMA number will be issued.

Step 2: After obtaining an RMA number, ship the product.

- Properly pack the product for shipping. All accessories that came with the original package must be included.
- Clearly write your RMA number on the top of the returned package. SIIG will refuse to accept any shipping package, and will not be responsible for a product returned without an RMA number posted on the outside of the shipping carton.
- You are responsible for the cost of shipping to SIIG. Ship the product to the following address:

SIIG, Inc.

6078 Stewart Avenue

Fremont, CA 94538-3152, USA

RMA #: _____

- SIIG will ship the repaired or replaced product via Ground in the U.S. and International Economy outside of the U.S. at no cost to the customer.

About SIIG, Inc.

Founded in 1985, SIIG, Inc. is a leading manufacturer of IT connectivity solutions (including Serial ATA and Ultra ATA Controllers, FireWire, USB, and legacy I/O adapters) that bridge the connection between Desktop/ Notebook systems and external peripherals. SIIG continues to grow by adding A/V and Digital Signage connectivity solutions to our extensive portfolio. SIIG products offer comprehensive user manuals, many user-friendly features, and are backed by an extensive manufacturer warranty. High quality control standards are evident by the overall ease of installation and compatibility of our products, as well as one of the lowest defective return rates in the industry. SIIG products can be found in computer retail stores, mail order catalogs, through major distributors, system integrators, and VARs in the Americas and the UK, and through e-commerce sites.

PRODUCT NAME

Industrial USB to RS-422/485 Serial Adapter Cable
with 3KV Isolation Protection

FCC RULES: TESTED TO COMPLY WITH FCC PART 15, CLASS B
OPERATING ENVIRONMENT: FOR HOME OR OFFICE USE

FCC COMPLIANCE STATEMENT:

This device complies with part 15 of the FCC Rules. Operation is subject to the following two conditions: (1) This device may not cause harmful interference, and (2) this device must accept any interference received, including interference that may cause undesired operation.

THE PARTY RESPONSIBLE FOR PRODUCT COMPLIANCE

SIIG, Inc.
6078 Stewart Avenue
Fremont, CA 94538-3152, USA
Phone: 510-657-8688

Industrial USB to RS-422/485 Serial Adapter Cable with 3KV Isolation Protection is a trademark of SIIG, Inc. SIIG and the SIIG logo are registered trademarks of SIIG, Inc. Microsoft and Windows are registered trademarks of Microsoft Corporation. All other names used in this publication are for identification only and may be trademarks of their respective owners.