



# Industrial USB to RS-232 Serial Adapter Hub Quick Installation Guide

---

## Introduction

---

The *Industrial USB to RS-232 Serial Adapter Hub* provides additional high speed RS-232 serial port(s) to a PC or Mac computer via USB port.

## Key Features and Benefits

- Compliant with Universal Serial Bus 2.0 Specification
- Supports serial port data transfer rates up to 921.6Kb/s
- Built in 15KVDC ESD serial interface protection
- Built in 512 byte FIFO buffer and software flow control

## System Requirements

- Desktop or notebook computer with an available USB port
- Mac OS X v10.4.x or later

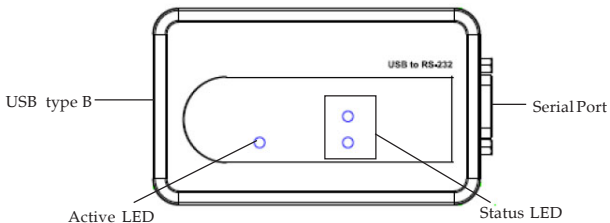
- Windows® 8 (32-/64-bit) / 7 (32-/64-bit) / Vista (32-/64-bit) / XP (32-/64-bit) / Server 2008 & 2003 (32-/64-bit) / Server 2008 R2 / 2000

## Package Contents

- *Industrial USB to RS-232 Serial Adapter Hub*
- USB cable (type A/B)
- Power adapter (for ID-SC0811-S1 only)
- 8x RJ-45 to RS-232 cable (for ID-SC0811-S1 only)
- Driver CD
- Quick installation guide

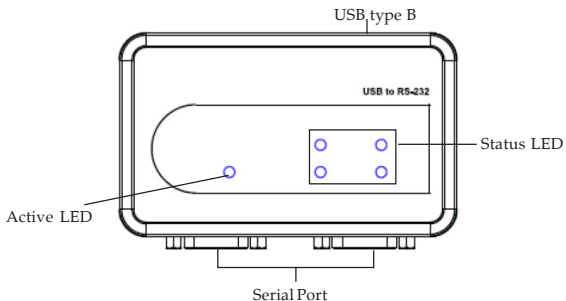
## Layout

ID-SC0511-S1



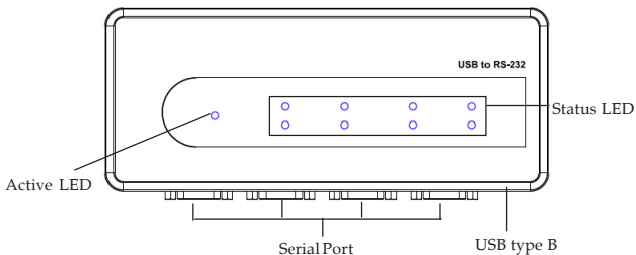
**Figure 1: 1-Port Industrial USB to RS-232  
Serial Adapter Hub**

# ID-SC0611-S1



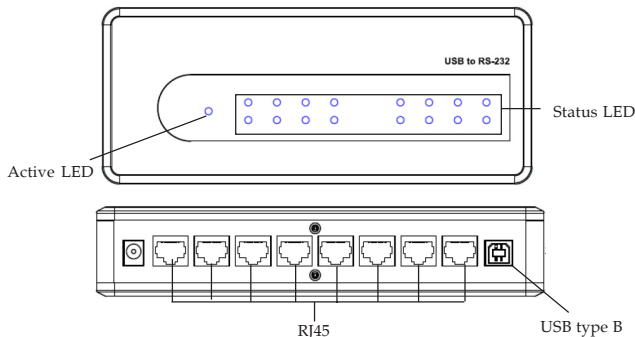
**Figure 2: 2-Port Industrial USB to RS-232  
Serial Adapter Hub**

# ID-SC0711-S1



**Figure 3: 4-Port Industrial USB to RS-232  
Serial Adapter Hub**

# ID-SC0811-S1



**Figure 4: 8-Port Industrial USB to RS-232  
Serial Adapter Hub**

## Pin Assignment

The front view of the RJ45 connector shows eight pins numbered 1 through 8 from left to right. The connector has a standard RJ45 shape with a notch on the left side.

Pin No.	Signal
1	DSR
2	RTS
3	GND
4	TX
5	RX
6	DCD
7	CTS
8	DTR

**Figure 5: RJ45 pin assignment**

## Windows Installation

---

Follow the instructions below to install the *Industrial USB to RS-232 Serial Adapter Hub* drivers.

Note: Do not connect the adapter to your computer before installing the driver.

### **Windows 8 (32-/64-bit) / Windows 7 (32-/64-bit) / Server 2008 R2**

1. Insert the driver CD.
2. For Windows 8: Press **Windows** key and **R** to call out the **Run** window, type **D:\32bit\MSSetup\_QUADPORT.exe** or **D:\64bit\MSSetup\_QUADPORT.exe**, then click **OK**. (Change D: to match your CD\DVD-ROM drive letter)  
For Windows 7 / 2008 R2: At the **AutoPlay** box, click **Open folder to view files**, select folder **32bit** or **64bit**, then **double click** **MSSetup\_QUADPORT** file.
3. At the **User Account Control**, click **Yes**.  
For 2008 R2, skip this step.
4. Click **Install**.

5. At the **Installation completed** window, click **Exit**.
6. Plug the adapter into the computer and the driver will be installed automatically.

### **Windows Vista (32-/64-bit)**

1. Insert the driver CD.
2. At the prompted driver folder, select **32bit** or **64bit** folder, then double click **MSSetup\_QUADPORT**.
3. At the **User Account Control**, click **Allow**.
4. Click **Install**.
5. At the **Installation completed** window, click **Exit**.
6. Plug the adapter into the computer and the driver will be installed automatically.

### **Windows XP (32-/64-bit) / Server 2008 (32-/64-bit) / Server 2003 (32-/64-bit)**

1. Insert the driver CD.
2. At the prompted folder, select folder **32bit** or **64bit**, then double click **MSSetup\_QUADPORT**.

3. Click **Install**.
4. At the **Installation completed** window, click **Exit**.
5. Plug the adapter into the computer and the driver will be installed automatically.

## **Windows 2000**

1. Insert the driver CD.
2. Click **Start, Run**. Type **D:\32bit\MSSetup\_QUADPORT.exe**, then click **OK**.  
(Change D: to match your CD\DVD-ROM drive letter)
3. Click **Install**.
4. At **Digital Signature Not Found**, click **Yes**.
5. Click **Exit**.
6. Plug the adapter into the computer.
7. Repeat step 4 for two times to complete the installation.

## To Verify Windows Installation

1. Go to Device Manager to verify installation.  
For Windows 8 / Windows 7 / Windows XP / Server 2003 & 2008 R2/ 2000: Right click **Computer** or **My Computer**, click **Manage**, then click **Device Manager**.  
For Windows Vista: Right click **Computer**, click **Manage**, click **Continue**, then click **Device Manager**.  
For Server 2008: Right click **Computer**, click **Manage**, then double click **Diagnostics**, and click **Device Manager**.
2. Double click **Ports(COM & LPT)**, **High-Speed USB Serial Port** should be displayed.



## Mac OS Installation

---

1. Insert the driver CD.
2. Double click the Drivers icon on desktop, or go to **Drivers**, select **MAC** folder, then double click **MCS7840\_v2.2.0.dmg**.
3. At the prompted folder, double click **MS8740\_v2.2.0** file.
4. At **Introduction**, click **Continue**.
5. At **Select Destination**, click **Continue**.  
For Mac 10.5 or later, skip this step.
6. At **Installation Type**, click **Change Install location** if you want to change the default saving folder; otherwise, click **Install** or **Upgrade**.
7. Enter **Name** and **Password**, then click **OK** or **Install software**.
8. Click **Continue Installation**.
9. At **Summary** or **Finish Up**, click **Restart** to restart the computer.
10. After rebooting, connect the adapter into the computer. The device is ready for use.

# To Verify MAC OS Installation

1. Go to **Applications, Utilities, System Profiler** or **System Information**. Click **USB** from the side bar, and you'll see **Vendor-Specific Device** displayed under **USB 2.0 Hub**.

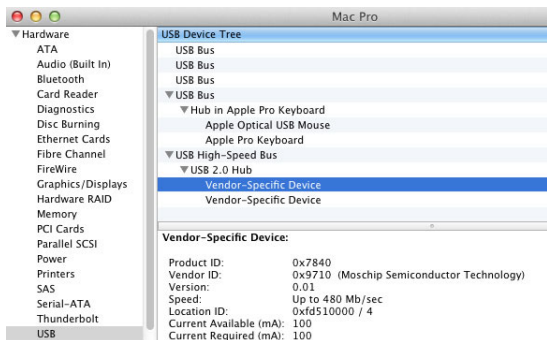


Figure 6

# Technical Support and Warranty

---

**QUESTIONS?** SIIG's **Online Support** has answers! Simply visit our web site at [www.siig.com](http://www.siig.com) and click **Support**. Our online support database is updated daily with new drivers and solutions. Answers to your questions could be just a few clicks away. You can also submit questions online and a technical support analyst will promptly respond.

SIIG offers a 3-year manufacturer warranty with this product. This warranty covers the original purchaser and guarantees the product to be free of any defects in materials or workmanship for three (3) years from the date of purchase of the product.

SIIG will, at our discretion, repair or replace (with an identical product or product having similar features and functionality) the product if defective in materials or workmanship. This warranty gives you specific legal rights, and you may also have other rights which vary from state to state. Please see our web site for more warranty details.

If you encounter any problems with this product, please follow the procedures below.

A) If it is within the store's return policy period, please return the product to the store where you purchased from.

B) If your purchase has passed the store's return policy period, please follow the steps below to have the product repaired or replaced.

**Step 1:** Submit your RMA request.

Go to [www.siig.com](http://www.siig.com), click **Support**, then **REQUEST A PRODUCT REPLACEMENT** to submit a request to **SIIG RMA** or fax a request to 510-657-5962. Your RMA request will be processed, if the product is determined to be defective, an RMA number will be issued.

**Step 2:** After obtaining an RMA number, ship the product.

- Properly pack the product for shipping. All accessories that came with the original package must be included.
- Clearly write your RMA number on the top of the returned package. SIIG will refuse to accept any shipping package, and will not be responsible for a product returned without an RMA number posted on the outside of the shipping carton.
- You are responsible for the cost of shipping to SIIG. Ship the product to the following address:

**SIIG, Inc.**

**6078 Stewart Avenue**

**Fremont, CA 94538-3152, USA**

**RMA #:** \_\_\_\_\_

- SIIG will ship the repaired or replaced product via Ground in the U.S. and International Economy outside of the U.S. at no cost to the customer.

## About SIIG, Inc.

---

Founded in 1985, SIIG, Inc. is a leading manufacturer of IT connectivity solutions (including Serial ATA and Ultra ATA Controllers, FireWire, USB, and legacy I/O adapters) that bridge the connection between Desktop/ Notebook systems and external peripherals. SIIG continues to grow by adding A/V and Digital Signage connectivity solutions to our extensive portfolio. SIIG products offer comprehensive user manuals, many user-friendly features, and are backed by an extensive manufacturer warranty. High quality control standards are evident by the overall ease of installation and compatibility of our products, as well as one of the lowest defective return rates in the industry. SIIG products can be found in computer retail stores, mail order catalogs, through major distributors, system integrators, and VARs in the Americas and the UK, and through e-commerce sites.

### **PRODUCT NAME**

Industrial USB to RS-232 Serial Adapter Hub

**FCC RULES: TESTED TO COMPLY WITH FCC PART 15, CLASS B  
OPERATING ENVIRONMENT: FOR HOME OR OFFICE USE**

### **FCC COMPLIANCE STATEMENT:**

This device complies with part 15 of the FCC Rules. Operation is subject to the following two conditions: (1) This device may not cause harmful interference, and (2) this device must accept any interference received, including interference that may cause undesired operation.

### **THE PARTY RESPONSIBLE FOR PRODUCT COMPLIANCE**

SIIG, Inc.

6078 Stewart Avenue

Fremont, CA 94538-3152, USA

Phone: 510-657-8688

Industrial USB to RS-232 Serial Adapter Hub is a trademark of SIIG, Inc. SIIG and the SIIG logo are registered trademarks of SIIG, Inc. Microsoft and Windows are registered trademarks of Microsoft Corporation. Mac and Mac OS are registered trademarks of Apple, Inc. All other names used in this publication are for identification only and may be trademarks of their respective owners.