



USB 3.0 to DisplayPort Adapter Quick Installation Guide

Introduction

The *USB 3.0 to DisplayPort Adapter* adds a DisplayPort port to your USB 3.0 enabled system.

Key Features and Benefits

- Compliant with Universal Serial Bus 3.0 Specification
- Supports high resolution up to 1080p (Full HD) & 2560 x 1600 (WQXGA)
- Connect up to 6 adapters per system
- Display modes: Primary, Extended & Mirror
- Supports 5.1-Channel audio

Serial Number Sticker

For future product return or exchange, this serial number is required. Please keep it for your reference.



System Requirements

- Desktop or notebook PC with an available USB 2.0/3.0 port (USB 3.0 recommended)
- Windows® 8 (32-/64-bit) / 7 (32-/64-bit) / Vista (32-/64-bit) / XP SP3 (32-bit)

Package Contents

- *USB 3.0 to DisplayPort Adapter*
- USB Cable (Type A to Micro-B)
- Driver CD
- Quick installation guide

Layout

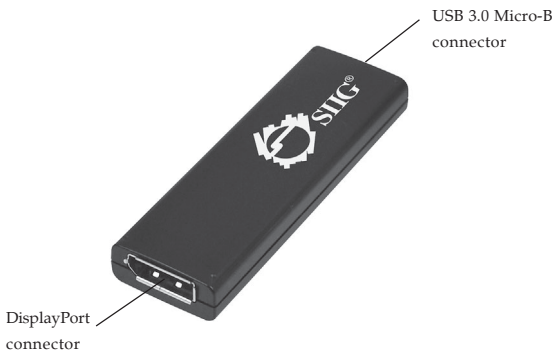


Figure 1: Layout

Software Installation

Make sure the proper version driver for your graphics card is installed, the *USB 3.0 to DisplayPort Adapter* is not designed to work with Windows' **Standard VGA Graphics Adapter** driver.

Important: Do not plug the adapter into the computer until instructed to do so.

Windows 8 (32-/64-bit) / 7 (32-/64-bit)

1. Insert the driver CD. Close the CD **AutoPlay** box.
2. Click **Start**, in the **Search programs and files** box, type **D:\setup.exe**, press **Enter**. Or press **Windows key** and **R**, type **D:\setup.exe** in the Run window, and click **OK**. (Change **D:** to match your CD/DVD-ROM drive letter)
3. At the **User Account Control**, click **Yes**.
4. Select **I Accept**.
5. Connect your second monitor to the adapter and turn it on.

6. Plug the adapter into the computer and the driver will be installed automatically.
7. Restart your system to complete the installation.

Windows Vista (32-/64-bit)

1. Insert the driver CD. Close CD autoplay box if prompted.
2. Click **Start**, in the **Start Search** box, type **D:\setup.exe**, press **Enter**. (Change **D:** to match your CD/DVD-ROM drive letter)
3. Click **Allow**, and select **I Accept**.
4. Connect your second monitor to the adapter and turn it on.
5. Plug the adapter into the computer and the driver will be installed automatically.
6. Restart your system to complete the installation.


Windows XP (32-bit)


1. Insert the driver CD. Click **Start, Run**, type **D:\setup.exe**, then click **OK**. (Change **D:** to match your CD/DVD-ROM drive letter)
2. Select **I Accept**.
3. Connect your second monitor to the adapter and turn it on.
4. Plug the adapter into the computer and the driver will be installed automatically.
5. Restart your system to complete the installation.

To Verify Windows Installation

1. Go to Device Manager to verify installation.
For Windows 8 / 7 / XP: Right click **Computer** or **My Computer**, click **Manage**, then click **Device Manager**.
For Windows Vista: Right click **Computer**, click **Manage**, click **Continue**, then click **Device Manager**.
2. Double click **USB Display Adapters**.
DisplayLink Display Adapter (4301) and *UHD-100DP* should be displayed.

Display Configuration

After successful driver installation, a display utility icon  will appear in the taskbar by the system clock.

Note: The icon may be hidden in the Windows System Tray. Click the arrow icon  to bring it up.

Selectable Viewing Modes

Access the utility by clicking the utility icon , and click *UHD-100 DP*.

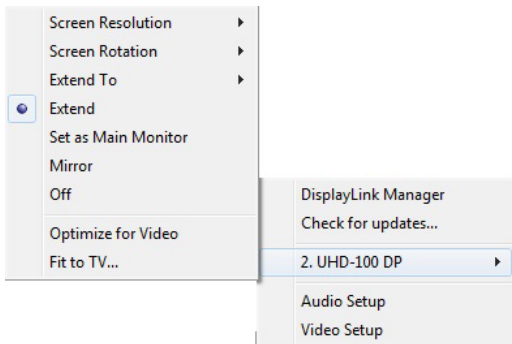


Figure 2: Utility Settings

- **Screen Resolution:** Click to select an available resolution. **Note:** This function is disabled in mirror mode, as the resolution is defined by the resolution of the primary monitor.
- **Screen Rotation:** Rotates the screen according to the desired orientation.
- **Extend To:** Extends the screen according to the desired orientation.
- **Extend:** This is the default setting of the *USB 3.0 to DisplayPort Adapter*. This mode extends your desktop for easy viewing of multiple windows. The window will move off the primary display from the right side and enter the extended display from the left side.
- **Set as Main Monitor:** Set this extended screen as the main screen.

IMPORTANT: In Windows XP, set the *USB 3.0 to DisplayPort Adapter* to **Off** before selecting **Set as Main Monitor**.

- **Mirror:** Duplicates the primary monitor to the monitor which connects with the *USB 3.0 to DisplayPort Adapter*.
- **Off:** Turns off the *USB 3.0 to DisplayPort Adapter*.
- **Optimize for Video** (not available in Windows XP): Optimize the video quality when playing back. Text may appear less clear when enabling.
- **Fit to TV:** Adjust the size of the desktop on the TV. **Note:** This function works only when one display is connected.

Multi-Monitor Configuration

The add-on monitors can be configured by clicking the utility icon and selecting **DisplayLink Manager** or **Video Setup**. The configuration page can also be opened using the steps below.

Position the mouse anywhere on the desktop:

1. *For Windows 8 / 7:* Right click then select **Screen resolution**.
2. *For Windows Vista:* Right click then select **Personalize**, then click **Display Settings**.

3. For Windows XP: Right click, select **Properties**, then select **Settings** tab.

Extended Mode

1. Refer to the **Multi-Monitor Configuration** on page 8 to open the configuration page.
2. In the **Display** drop-down menu, select the preferred monitor.

For Windows 8 / 7: In the **Multiple displays** drop-down menu, select **Extend desktop to this display**.

For Windows Vista: Check the **Extend the desktop onto this monitor** box.

For Windows XP: Check the **Extend my Windows desktop onto this monitor** box.

3. Click **OK** to confirm and close the settings screen.
4. Once the setting is completed, simply drag and drop the application icons or the opened window, in restore down mode, to the add on monitor. However, some applications may not support the extended desktop.

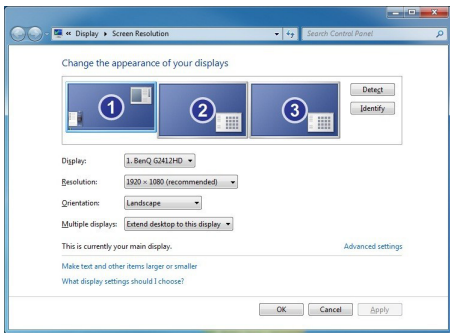


Figure 3: Monitor Orientation

Mirror Mode

1. Refer to the **Multi-Monitor Configuration** on page 8 to open the configuration page.
2. In the **Display** drop-down menu, select the preferred monitor.
For Windows 8 / 7: Check **Multiple displays**, select **Duplicate these displays**.
For Windows Vista: Uncheck the **Extend the desktop onto this monitor** box.
For Windows XP: Uncheck the **Extend my Windows desktop onto this monitor** box.
3. Click **OK** to confirm and close the settings screen.

Primary Monitor

1. Refer to the **Multi-Monitor Configuration** on page 8 to open the configuration page.
2. In the **Display** drop-down menu, select the preferred monitor.
3. For Windows 8 / 7: Check the **Make this my main display** box.
For Windows Vista: Check the **This is my main monitor** box.
For Windows XP: Check the **Use this device as the primary monitor** box
4. Click **OK** to confirm and close the settings screen.

Windows Shortcut

Press **Windows** key and **P** to bring up the menu and choose a desired mode (Available in Windows 8 and Windows 7 only).

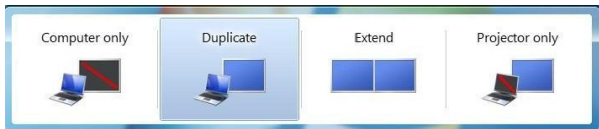


Figure 4: Windows Shortcut

Cursor Disappearing

In some cases, when removing the adapter while in extended mode, the desktop will still be paired to the add-on monitor(s) and the mouse cursor may not return to the primary monitor. If this happens, connect the add-on monitor(s) and adapter again or keep moving the mouse.

Video Playback in Extended Mode

If the video or DVD playback quality is poor or skips frames in the extended mode, please playback on the primary monitor instead of the add-on monitors.

Uninstall the Adapter Driver

Windows 8 (32-/64-bit) / 7 (32-/64-bit)

1. Open **Control Panel > Programs > Programs and Features**.
2. Click **DisplayLink Graphics**, click **Uninstall**, then click **Yes**.
3. At **User Account Control**, click **Yes**, and click **OK**.
4. Click **Yes** to restart the computer.

Windows Vista (32-/64-bit)

1. Open **Control Panel> Programs> Programs and Features**.
2. Click **DisplayLink Graphics**, click **Uninstall**, then click **Yes**.
3. At **User Account Control**, click **Allow**.
4. Select **Automatically close applications and attempt to restart them** after setup is complete, click **OK**, and click **OK** again.
5. Click **Yes** to restart the computer.

Windows XP (32-bit)

1. Open **Control Panel> Add or Remove Programs**.
2. Click **DisplayLink Graphics**, click **Remove**, and click **Yes**.
3. Click **Yes** to restart your computer.

Frequently Asked Questions

- Q1: Why won't my DVD player work when I move it over to the extended display?
- A1: Some DVD playback software packages do not support playing on a second display adapter.
- Q2: How come my open window will not move over to the extended display?
- A2: Restore down the open window before moving it over to the extended display, also make sure the open window is moved completely over onto the extended display.
- Q3: There are lines running horizontally up and down my screen or the screen is distorted.
- A3: This is due to a low or unsupported refresh rate setting. You can change this in **Display Properties/ Settings/ Advanced/Monitor**. **Note:** Select the *USB 3.0 to DisplayPort Adapter* and do not set the refresh rate higher than what your monitor can support.
- Q4: Why can't I make the *USB 3.0 to DisplayPort Adapter* the primary display?
- A4: Some video cards ship with a utility that prevents other video cards from being set as the primary video card. Check the bottom right hand corner of the taskbar for the utility. Disable the utility before switching the *USB 3.0 to DisplayPort Adapter* to be the primary display.

Technical Support and Warranty

QUESTIONS? SIIG's **Online Support** has answers! Simply visit our web site at www.siig.com and click **Support**. Our online support database is updated daily with new drivers and solutions. Answers to your questions could be just a few clicks away. You can also submit questions online and a technical support analyst will promptly respond.

SIIG offers a 5-year manufacturer warranty with this product. This warranty covers the original purchaser and guarantees the product to be free of any defects in materials or workmanship for five (5) years from the date of purchase of the product.

SIIG will, at our discretion, repair or replace (with an identical product or product having similar features and functionality) the product if defective in materials or workmanship. This warranty gives you specific legal rights, and you may also have other rights which vary from state to state. Please see our web site for more warranty details.

If you encounter any problems with this product, please follow the procedures below.

A) If it is within the store's return policy period, please return the product to the store where you purchased from.

B) If your purchase has passed the store's return policy period, please follow the steps below to have the product repaired or replaced.

Step 1: Submit your RMA request.

Go to www.siig.com, click **Support**, then **REQUEST A PRODUCT REPLACEMENT** to submit a request to **SIIG RMA** or fax a request to 510-657-5962. Your RMA request will be processed, if the product is determined to be defective, an RMA number will be issued.

Step 2: After obtaining an RMA number, ship the product.

- Properly pack the product for shipping. All accessories that came with the original package must be included.
- Clearly write your RMA number on the top of the returned package. SIIG will refuse to accept any shipping package, and will not be responsible for a product returned without an RMA number posted on the outside of the shipping carton.
- You are responsible for the cost of shipping to SIIG. Ship the product to the following address:
SIIG, Inc.
6078 Stewart Avenue
Fremont, CA 94538-3152, USA
RMA #: _____
- SIIG will ship the repaired or replaced product via Ground in the U.S. and International Economy outside of the U.S. at no cost to the customer.

About SIIG, Inc.

Founded in 1985, SIIG, Inc. is a leading manufacturer of IT connectivity solutions (including Serial ATA and Ultra ATA Controllers, FireWire, USB, and legacy I/O adapters) that bridge the connection between Desktop/Notebook systems and external peripherals. SIIG continues to grow by adding A/V and Digital Signage connectivity solutions to our extensive portfolio.

SIIG products offer comprehensive user manuals, many user-friendly features, and are backed by an extensive manufacturer warranty. High quality control standards are evident by the overall ease of installation and compatibility of our products, as well as one of the lowest defective return rates in the industry. SIIG products can be found in computer retail stores, mail order catalogs, through major distributors, system integrators, and VARs in the Americas and the UK, and through e-commerce sites.

PRODUCT NAME

USB 3.0 to DisplayPort Adapter

FCC RULES: TESTED TO COMPLY WITH FCC PART 15, CLASS B
OPERATING ENVIRONMENT: FOR HOME OR OFFICE USE

FCC COMPLIANCE STATEMENT:

This device complies with part 15 of the FCC Rules. Operation is subject to the following two conditions: (1) This device may not cause harmful interference, and (2) this device must accept any interference received, including interference that may cause undesired operation.

THE PARTY RESPONSIBLE FOR PRODUCT COMPLIANCE

SIIG, Inc.
6078 Stewart Avenue
Fremont, CA 94538-3152, USA
Phone: 510-657-8688

USB 3.0 to DisplayPort Adapter is a trademark of SIIG, Inc. SIIG and the SIIG logo are registered trademarks of SIIG, Inc. Microsoft and Windows are registered trademarks of Microsoft Corporation. All other names used in this publication are for identification only and may be trademarks of their respective owners.