



USB 3.0 HDMI/DVI Dual Head Display Adapter Quick Installation Guide

Introduction

The *USB 3.0 HDMI/DVI Dual Head Display Adapter* let you easily and quickly add dual displays to your USB 3.0 enabled system.

Key Features and Benefits

- Compliant with Universal Serial Bus 3.0 Specification
- HDMI and DVI supporting 1080p and up to 2048 x 1152 resolutions
- Display modes: Primary, Extended & Mirror
- Operating power consumption: 460mA
- Connect up to 6 monitors simultaneously

System Requirements

- Windows® 8 (32-/64-bit) / 7 (32-/64-bit) / Vista (32-/64-bit) / XP (32-bit)
- Desktop or notebook computer with an available USB 3.0 port

Package Contents

- *USB 3.0 HDMI/DVI Dual Head Display Adapter*
- USB 3.0 cable (Type A/B)
- Software CD
- Quick installation guide

Layout



LED indicators from left to right: HDMI output, DVI output, power

Figure 1: Front Layout

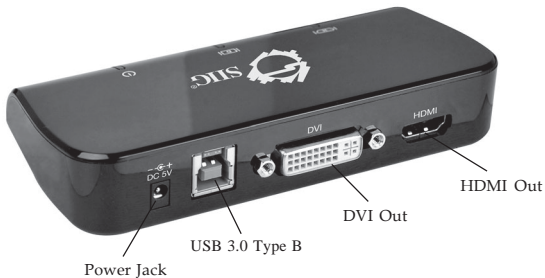


Figure 2: Back Layout

Application



One PC can connect up to three *USB 3.0 HDMI/DVI Dual Head Display Adapters*, equivalent to up to six monitors.

Figure 3: Application

Windows Installation

Follow the instructions below to install the *USB 3.0 HDMI/DVI Dual Head Display Adapter* drivers.



Windows 8 (32-/64-bit) / Windows 7 (32-/64-bit) / Windows Vista (32-/64-bit) / Windows XP (32-bit)

1. Insert the driver CD.
2. For Windows 8 / Vista: At the prompted driver window, double click **Setup**. If the driver window does not pop out, press **Windows key** and **R** to call out the **Run** window, then type **D:\Setup.exe** and click **OK**. (Change D: to match your CD\DVD-ROM drive letter)
For Windows 7: At the **AutoPlay** box, click **Open folder to view files**. Double click **Setup**.
For Windows XP: Click **Start, Run**. Type **D:\Setup.exe**, click **OK**. (Change D: to match your CD\DVD-ROM drive letter)
3. At the **User Account Control**, click **Yes** or **Allow**. For XP, skip this step.

4. Click **I Accept**.
5. Plug the adapter into the computer, click **Cancel** at **Found New Hardware** (if prompted), then restart the computer.

To Verifying Windows Installation

1. Check in Device Manager.
For Windows 8 / Windows 7 / Windows XP: Right click **Computer** or **My Computer**, click **Manager**, then click **Device Manager**.
For Windows Vista: Right click **Computer**, click **Manager**, click **Continue**, then click **Device Manager**.
2. A **USB3.0 Dual Video Adapter** should be listed under **USB Display Adapters**, and **DisplayLink Audio** should be listed under **Sound, video and game controllers**.



Note: If there is a  (yellow question mark) or  (exclamation mark) next to that item, then the driver is not properly installed. Please delete the item, unplug the adapter and repeat the driver installation steps.

Display Configuration

Note:the following screen shots in this section are using Windows 7 operating system. It may not match your operating system, but the definition of buttons, tabs and menus are the same.

Utility Settings

The supplied utility allows configuring the display mode, screen rotation, screen resolution, and physical arrangement of your monitors.

1. Click  (**utility icon**) in the Windows System Tray. Note that the utility icon may be hidden in the Windows System Tray. Click  (**arrow icon**) to bring up more icons if this happens.
2. Select a preferred option, and then click it.

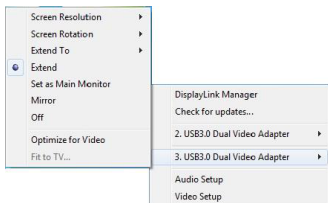


Figure 4: Utility Setting

Description of the Settings

- **DisplayLink Manager:** Enable the Windows screen resolution page
- **Check for Updates:** Check for the latest driver and download if available

USB 3.0 Dual Video Adapter:

- **Screen Resolution:** Click to select an available resolution. Note that this function is invalid in mirror mode, as the resolution is defined by the resolution of the primary monitor
- **Screen Rotation:** Rotate the screen according to the desired orientation
- **Extend To:** Extend the screen according to the desired orientation
- **Set as Main Monitor:** Set this screen to the main screen
- **Mirror:** Duplicate the primary monitor to the monitor which connects with the adapter
- **Optimize for Video:** Optimize the video quality when playing back. Text may appear less clear when enabling.

- **Off:** Turn off the monitor
- **Fit to TV:** Adjust the size of Windows Desktop on the TV. **Note** that this function works only when one add-on monitor is connected
- **Audio Setup:** Enable the Windows audio configuration page. This function works only in specific models
- **Video Setup:** Enable the Windows screen resolution

Multi-Monitor Configuration


The additional DVI/HDMI monitors can be configured to either **mirror mode**, **extended mode** or be the **primary display**.

Position the mouse anywhere on the Windows Desktop,

For Windows 8/ Windows 7: Right click then select **Screen Resolution**.

For Windows Vista: Right click and select **Personalize**, then click **Display Settings**.

For Windows XP: Right click then select **Properties > Settings**.

Alternatively, click  (utility icon) in the **Windows System Tray**, and then select **DisplayLink Manager** or **Video Setup**.

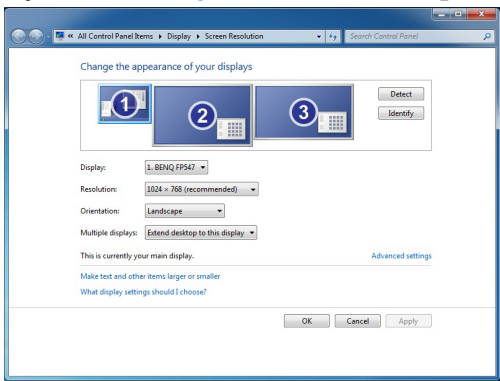


Figure 5: Monitor Orientation

Extended Mode

1. Refer to the **Multi-Monitor Configuration** on page 8 to open the configuration page.
2. In the **Display** drop-down menu, select the preferred monitor.
3. *For Windows 8 / Windows 7:* In the Multiple Displays drop-down menu, select **Extend these displays**.

For Windows Vista: Check the **Extend the desktop onto this monitor** box.

For Windows XP: Check the **Extend my Windows desktop onto this monitor** box.

4. Click **OK** to save the settings.
5. Click **Yes** or **Keep changes** to save the change. If the setting mode is the same with the previous one, skip this step.
6. Once the setting is completed, simply drag and drop the application icons or the opened windows, in restore down mode, to the add-on monitor.

However, some applications may not support to display on the extended desktop.

Cursor Disappearing

In some cases, when removing the adapter in extended mode, the desktop will still be paired to the add-on monitor(s) and the mouse cursor may not return to the primary monitor. If this happens, connect the add-on monitor(s) and adapter again or keep moving the mouse.

Video Playback in Extended Mode

If the video or DVD playback quality is poor or low performance in the extended mode, please playback on the primary monitor instead of the add-on monitor(s).

Mirror Mode

1. Refer to the **Multi-Monitor Configuration** on page 8 to open the configuration page.
2. In the **Display** drop-down menu, select the preferred monitor.
3. *For Windows 8 / Windows 7:* In the Multiple Displays drop-down menu, select Duplicate these displays.
Windows Vista: Uncheck the **Extend the desktop onto this monitor** box.
Windows XP: Uncheck the **Extend my Windows desktop onto this monitor** box.
4. Click **OK**.
5. Click **Yes** or **Keep changes** to save the change. If the setting mode is the same with the previous one, skip this step.

Note: Video playback in mirror mode is not recommended under Windows XP system or in Basic mode under Windows Vista & Windows 7 system.

Primary Monitor

1. Make sure your add-on monitor is in the Extended mode. Refer to the **Multi-Monitor Configuration** on page 8 to open the configuration page.
2. In the **Display** drop-down menu, select the preferred monitor.
3. Check the **Make this my main display** box on Windows 8 / Window 7 / Windows Vista or **Use this device as the primary monitor** box on Windows XP.
4. Click **OK** to confirm and close the settings screen.

Uninstalling the Driver

For Windows 8 (32-/64-bit) / 7 (32-/64-bit)

1. Open the **Control Panel > Programs > Programs and Features**. Under the **Uninstall or change a program**, double click **DisplayLink Graphics**.
2. *For Windows 8*: Click **Yes, Yes, and OK**.
For Windows 7: Click **Yes** for twice.
3. Click **Yes** to restart the computer.

For Windows Vista (32-/64-bit)

1. Open the **Control Panel > Programs and Features**. Under the **Uninstall or change a program**, double click **DisplayLink Graphics**.
2. Click **Yes, Allow, OK**, then click **Yes** to restart the computer.

For Windows XP (32-bit)

1. Open the **Control Panel > Add or Remove Program**. Click **DisplayLink Graphics** and click **Remove**.
2. Click **Yes** and **OK** to restart your computer.

Frequently Asked Questions

Q1: Why won't my DVD video play when I move it over to the extended display?

A1: Some DVD playback software packages do not support playing on a second display adapter.

Q2: There are lines running up and down my screen or the screen is distorted

A2: This is due to a low or unsupported refresh rate. You can change this in **Display Properties/Settings/Advanced/Monitor**. Make sure the refresh rate you set is not higher than what your monitor can support.

Technical Support and Warranty

QUESTIONS? SIIG's **Online Support** has answers! Simply visit our web site at www.siig.com and click **Support**. Our online support database is updated daily with new drivers and solutions. Answers to your questions could be just a few clicks away. You can also submit questions online and a technical support analyst will promptly respond.

SIIG offers a 3-year manufacturer warranty with this product. This warranty covers the original purchaser and guarantees the product to be free of any defects in materials or workmanship for three (3) years from the date of purchase of the product.

SIIG will, at our discretion, repair or replace (with an identical product or product having similar features and functionality) the product if defective in materials or workmanship. This warranty gives you specific legal rights, and you may also have other rights which vary from state to state. Please see our web site for more warranty details.

If you encounter any problems with this product, please follow the procedures below.

A) If it is within the store's return policy period, please return the product to the store where you purchased from.

B) If your purchase has passed the store's return policy period, please follow the steps below to have the product repaired or replaced.

Step 1: Submit your RMA request.

Go to www.siig.com, click **Support**, then **REQUEST A PRODUCT REPLACEMENT** to submit a request to **SIIG RMA** or fax a request to 510-657-5962. Your RMA request will be processed, if the product is determined to be defective, an RMA number will be issued.

Step 2: After obtaining an RMA number, ship the product.

- Properly pack the product for shipping. All accessories that came with the original package must be included.
- Clearly write your RMA number on the top of the returned package. SIIG will refuse to accept any shipping package, and will not be responsible for a product returned without an RMA number posted on the outside of the shipping carton.
- You are responsible for the cost of shipping to SIIG. Ship the product to the following address:

SIIG, Inc.

6078 Stewart Avenue

Fremont, CA 94538-3152, USA

RMA #: _____

- SIIG will ship the repaired or replaced product via Ground in the U.S. and International Economy outside of the U.S. at no cost to the customer.

About SIIG, Inc.

Founded in 1985, SIIG, Inc. is a leading manufacturer of IT connectivity solutions (including Serial ATA and Ultra ATA Controllers, FireWire, USB, and legacy I/O adapters) that bridge the connection between Desktop/ Notebook systems and external peripherals. SIIG continues to grow by adding A/V and Digital Signage connectivity solutions to our extensive portfolio. SIIG products offer comprehensive user manuals, many user-friendly features, and are backed by an extensive manufacturer warranty. High quality control standards are evident by the overall ease of installation and compatibility of our products, as well as one of the lowest defective return rates in the industry. SIIG products can be found in computer retail stores, mail order catalogs, through major distributors, system integrators, and VARs in the Americas and the UK, and through e-commerce sites.

PRODUCT NAME

USB 3.0 HDMI/DVI Dual Head Display Adapter

**FCC RULES: TESTED TO COMPLY WITH FCC PART 15, CLASS B
OPERATING ENVIRONMENT: FOR HOME OR OFFICE USE**

FCC COMPLIANCE STATEMENT:

This device complies with part 15 of the FCC Rules. Operation is subject to the following two conditions: (1) This device may not cause harmful interference, and (2) this device must accept any interference received, including interference that may cause undesired operation.

THE PARTY RESPONSIBLE FOR PRODUCT COMPLIANCE

SIIG, Inc.

6078 Stewart Avenue

Fremont, CA 94538-3152, USA

Phone: 510-657-8688

USB 3.0 HDMI/DVI Dual Head Display Adapter is a trademark of SIIG, Inc. SIIG and the SIIG logo are registered trademarks of SIIG, Inc. All other names used in this publication are for identification only and may be trademarks of their respective owners.