



DP Wireless-N PCI Wi-Fi Adapter Quick Installation Guide

Introduction

The *DP Wireless-N PCI Wi-Fi Adapter* is designed to enable your PCI equipped PC to have a wireless connection to network.

Key Features and Benefits

- Complies with 2.4GHz IEEE 802.11 b/g/n standards
- 2T2R with 300Mb/s data rate for both transmitting and receiving
- Wireless security: 64/128bit WEP, WPA, WPA2
- Supports WPS (WiFi protected setup)
- Supports Qos-WMM, WMM-PS
- Installs in standards height or low profile chassis with included brackets

System Requirements

- Desktop PC with an available PCI slot
- Windows® 8 (32-/64-bit) / 7 (32-/64-bit) / Vista (32-/64-bit) / XP (32-/64-bit) / Server 2003 & 2008 (32-/64-bit) / Server 2008 R2 / 2000

Package Contents

- *DP Wireless-N PCI Wi-Fi Adapter*
- Spare low profile bracket
- Antennas (2)
- Software CD
- Quick installation guide

Layout

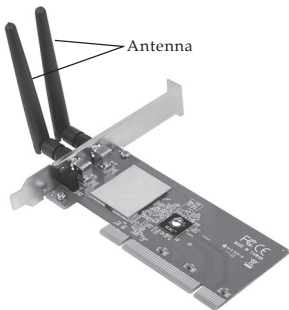
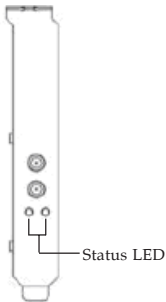


Figure 1: CN-WR0711-S1 Layout



Separate Transmit (Tx) and Receive (Rx) LED for indicating network status:

- Lnk/Act on: Indicates a valid connection.
- Lnk/Act quickly flashing: Indicates the adapter is transmitting or receiving data.

Figure 2

Hardware Installation

General instructions for installing the card are provided below. Since the design of computer cases and motherboards vary, refer to your computer's reference manual for further information, if needed.

Static Electricity Discharge may permanently damage your system. Discharge any static electricity build up in your body by touching your computer's case for a few seconds. Avoid any contact with internal parts and handle cards only by their external edges.

Note: For low profile chassis, remove the standard height bracket and install the enhanced low-profile bracket now.

1. Turn OFF the power to your computer and any other connected peripheral devices.
2. Unplug the power cord and remove the cover from the computer.
3. Remove the slot bracket from an available PCI slot.
4. To install the card, carefully align the card's bus connector with the selected PCI slot on the motherboard. Push the board down firmly, but gently, until it is well seated.
5. Replace the slot bracket's holding screw to secure the card.
6. Replace the computer cover and reconnect the power cord.
7. Attach the external antennas to PCI adapter antenna ports.

Software Installation

NOTE: Server 2008 & 2008 R2 Microsoft WLAN AutoConfig Service is not installed by default. Follow the instructions below to install WLAN AutoConfig Service to enable wireless network support. After completing the installation, and for all other Windows OS, go directly to **Driver Installation** on the next page.

1. Right click **Computer**, then click **Manage**.
2. Right click **Features**, then click **Add Features**.
3. Check the **Wireless LAN Service**, then click **Next**.

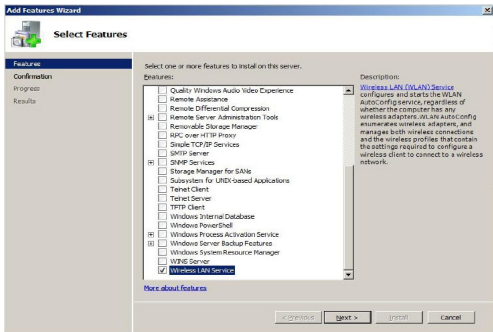


Figure 3

- Click Install then click Close, and Wireless LAN Service is installed successfully.

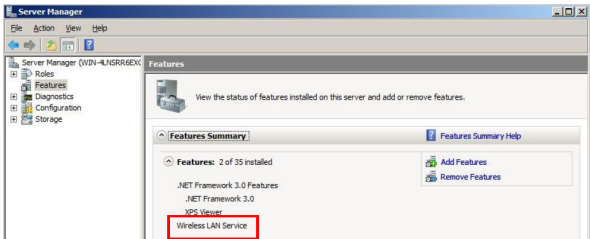


Figure 4

Driver Installation

Follow the instructions below to install the driver and software.

- Install the board and boot up Windows.
- At the Found New Hardware, click **Cancel**. Skip this step if not prompted.
- Insert the driver CD. At the CD driver window if prompted, select folder **PCI**, then double click **Setup**. Or press **Windows key** and **R**, then type **D:\PCI\Setup.exe** in the Run window, then click **OK**. (Change D: to match your CD/DVD-ROM drive letter)

4. Click **Yes** or **Allow** at the User Account Control. Skip this step if not prompted.
5. At the license Agreement, select **I accept the terms of the license agreement**, click **Next**.
6. Select **Install the driver and Ralink WLAN Utility**, then click **Next**.
7. Select **Ralink Configuration Tool**, then click **Next**.
8. Click **Install**, then click **Finish**.
9. Restart the computer.

To Verify Windows Installation

1. Go to Device Manager to verify installation.
For Window 8 / Windows 7 / Windows XP / Server 2003 / 2008 R2 / 2000: Right click **Computer** or **My Computer**, click **Manage**, then click **Device Manager**.
For Windows Vista: Right click **Computer**, click **Manage**, click **Continue**, then click **Device Manager**.

For Server 2008: Right click **Computer**, click **Manage**, double click **Diagnostics**, then click **Device Manager**.

2. Double click **Network adapters**. A **802.11n Wireless LAN Card** should be displayed.

Wireless Network Configuration

After finishing the driver installation, use Windows Zero Configuration (WZC) **OR** Ralink Wireless Utility (RaUI) to connect to your wireless network. When WZC is chosen as the configuration tool, RaUI only provides monitoring functions, and vice versa. Right click the RaUI icon in the taskbar, then select **Use Zero Configuration as Configuration Utility** to configure by WZC, or select **Use RaConfig as Configuration Utility** to configure by RaUI.

For Window 8, Windows 7, Vista, WZC and RaUI can be used together and no need to do the selection before the connection.

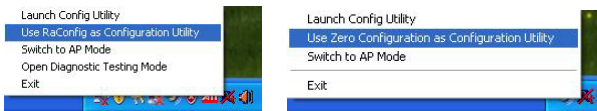


Figure 5

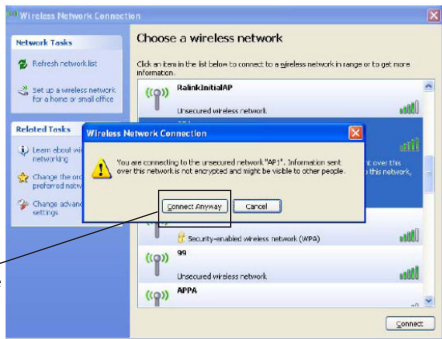
WZC (recommended)

For basic network connection settings, WZC is the recommended tool to use. Right click the wireless network icon in the taskbar, then select **View Available Wireless Networks**.



Figure 6

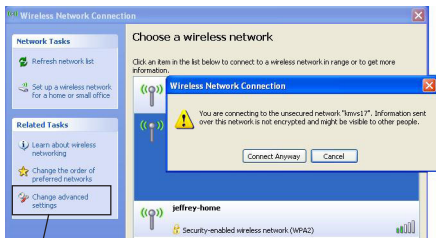
At the Wireless Network Connection, double click the preferred wireless network, enter the Network key, click **Connect**, then click **Connect Anyway**.



Click Continue
Anyway

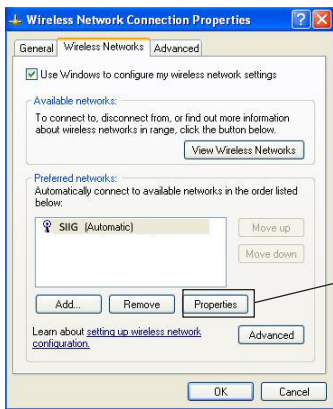
Figure 7

For advanced settings, click **Change advanced settings**, select tab **Wireless Networks**, then click **Properties** (as Figure 8 & 9).



Click Change advanced settings

Figure 8



Click Properties

Figure 9

Select the type of Network Authentication and Data Encryption, click **OK** to save the settings.

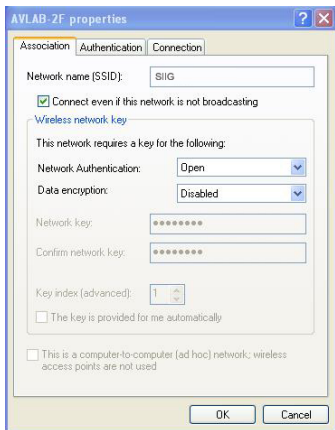


Figure 10

Ralink UI

Double click the Ralink icon in the taskbar. Select the preferred wireless network, type in the WPA Preshared key, then click **OK**. the connection will be established. **Note:** If you configured your wireless network using **WZC** utility on page 9, this utility is not needed.

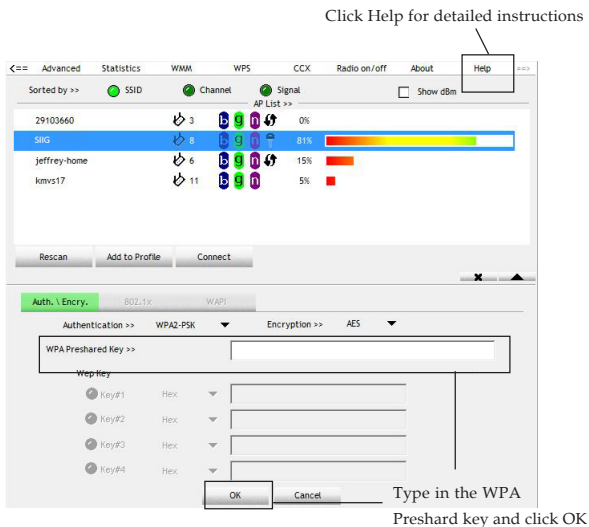


Figure 11

Use "Add a Profile" function to save your AP information.

At the Network, select the preferred AP, click **Add to Profile**, edit the profile name and click **OK**.

Select the preferred AP from the AP list, then click Add to Profile to save the AP information.

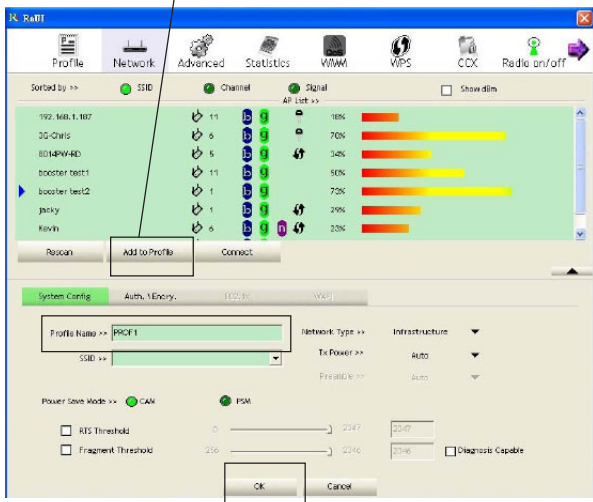
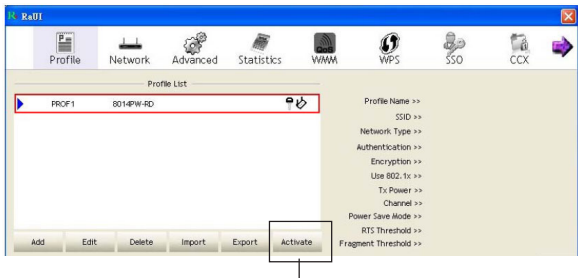




Figure 12

Then, the AP will be added to your profile. Click **Activate**.



Select one AP at the Profile, then click Activate to make the connection.

Figure 13

Once the wireless network is successfully connected, the RaUI icon turns to green , and the windows network shows connected  .

Technical Support and Warranty

QUESTIONS? SIIG's **Online Support** has answers! Simply visit our web site at www.siig.com and click **Support**. Our online support database is updated daily with new drivers and solutions. Answers to your questions could be just a few clicks away. You can also submit questions online and a technical support analyst will promptly respond.

SIIG offers a 5-year manufacturer warranty with this product. This warranty covers the original purchaser and guarantees the product to be free of any defects in materials or workmanship for five (5) years from the date of purchase of the product.

SIIG will, at our discretion, repair or replace (with an identical product or product having similar features and functionality) the product if defective in materials or workmanship. This warranty gives you specific legal rights, and you may also have other rights which vary from state to state. Please see our web site for more warranty details.

If you encounter any problems with this product, please follow the procedures below.

A) If it is within the store's return policy period, please return the product to the store where you purchased from.

B) If your purchase has passed the store's return policy period, please follow the steps below to have the product repaired or replaced.

Step 1: Submit your RMA request.

Go to www.siig.com, click **Support**, then **REQUEST A PRODUCT REPLACEMENT** to submit a request to **SIIG RMA** or fax a request to 510-657-5962. Your RMA request will be processed, if the product is determined to be defective, an RMA number will be issued.

Step 2: After obtaining an RMA number, ship the product.

- Properly pack the product for shipping. All accessories that came with the original package must be included.
- Clearly write your RMA number on the top of the returned package. SIIG will refuse to accept any shipping package, and will not be responsible for a product returned without an RMA number posted on the outside of the shipping carton.
- You are responsible for the cost of shipping to SIIG. Ship the product to the following address:

SIIG, Inc.

6078 Stewart Avenue

Fremont, CA 94538-3152, USA

RMA #: _____

- SIIG will ship the repaired or replaced product via Ground in the U.S. and International Economy outside of the U.S. at no cost to the customer.

About SIIG, Inc.

Founded in 1985, SIIG, Inc. is a leading manufacturer of IT connectivity solutions (including Serial ATA and Ultra ATA Controllers, FireWire, USB, and legacy I/O adapters) that bridge the connection between Desktop/ Notebook systems and external peripherals. SIIG continues to grow by adding A/V and Digital Signage connectivity solutions to our extensive portfolio. SIIG products offer comprehensive user manuals, many user-friendly features, and are backed by an extensive manufacturer warranty. High quality control standards are evident by the overall ease of installation and compatibility of our products, as well as one of the lowest defective return rates in the industry. SIIG products can be found in computer retail stores, mail order catalogs, through major distributors, system integrators, and VARs in the Americas and the UK, and through e-commerce sites.

PRODUCT NAME

DP Wireless-N PCI Wi-Fi Adapter

FCC RULES: TESTED TO COMPLY WITH FCC PART 15, CLASS B
OPERATING ENVIRONMENT: FOR HOME OR OFFICE USE

FCC COMPLIANCE STATEMENT:

This device complies with part 15 of the FCC Rules. Operation is subject to the following two conditions: (1) This device may not cause harmful interference, and (2) this device must accept any interference received, including interference that may cause undesired operation.

THE PARTY RESPONSIBLE FOR PRODUCT COMPLIANCE

SIIG, Inc.
6078 Stewart Avenue
Fremont, CA 94538-3152, USA
Phone: 510-657-8688

DP Wireless-N PCI Wi-Fi Adapter is a trademark of SIIG, Inc. SIIG and the SIIG logo are registered trademarks of SIIG, Inc. Microsoft and Windows are registered trademarks of Microsoft Corporation. All other names used in this publication are for identification only and may be trademarks of their respective owners.