



# USB 3.0 to IDE/SATA 6Gb/s 3.5" Enclosure Quick Installation Guide

## **Introduction**

---

The *USB 3.0 to IDE/SATA 6 Gb/s 3.5" Enclosure* is designed to support USB equipped computers. This enclosure provides large capacity storage using 3.5" SATA or IDE hard disk drives through hot-swapping USB 3.0 interface.

## **Key Features and Benefits**

- Quickly adds more storage space to your USB-enabled PC (USB 3.0 recommended)
- No driver installation required. Simply install a 3.5" SATA or IDE hard disk into the enclosure then connect to a USB port
- Assembles in minutes with quick and easy tool-less design
- Aluminum housing and built-in fan effectively disperses heat to keep the hard disk cool and long-lasting

## System Requirements

- Notebook or desktop PC with an available USB 2.0/3.0 port (USB 3.0 recommended)
- Windows® 8 (32-/64-bit) / 7 (32-/64-bit) / Vista (32-/64-bit) / XP (32-/64-bit) / Server 2003 & 2008 (32-/64-bit) / Server 2008 R2

## Package Contents

- *USB 3.0 to IDE/SATA 6Gb/s 3.5" Enclosure*
- Power adapter
- USB 3.0 cable
- Quick installation guide and accessories

## Layout



**Figure 1: Front Layout**



Figure 2: Back Layout

## Hardware Installation

---

The following section guides you through the installation of your enclosure.

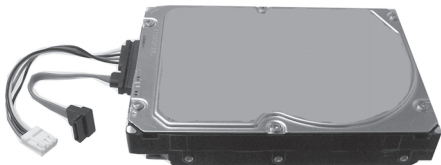
### Installing a 3.5" SATA Hard Disk Drive

1. Slide the **Release button**, see **Figure 2**, then gently grasp the panel and slide the assembly out of the case, **Figure 3**.



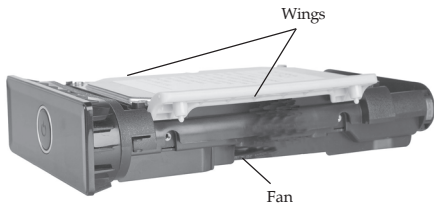
Figure 3

2. Connect the SATA cable to the SATA hard disk drive, see **Figure 4**.



**Figure 4**

3. Pull up on the wings on both sides of the assembly. Slide the SATA hard disk drive into the tray. Push the wings down to secure the hard disk drive, see **Figure 5** and **Figure 6**.



**Figure 5**



Figure 6

4. Connect the 4-pin power connector and the SATA data cable to the enclosure, see **Figure 7**.

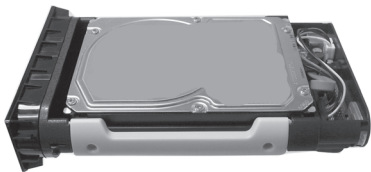


Figure 7

5. Slide the assembly back into the case. Make sure you hear a click as it locks into place.
6. Plug the included switching power adapter into the **power adapter jack of the enclosure**, then plug the power adapter into a reliable power source.

7. Use the included USB 3.0 data cable to plug the *USB 3.0 to IDE/SATA 6Gb/s 3.5" Enclosure* to the computer's USB port.
8. Power on the enclosure. Make sure that the **LED** is lit, see **Figure 1**.

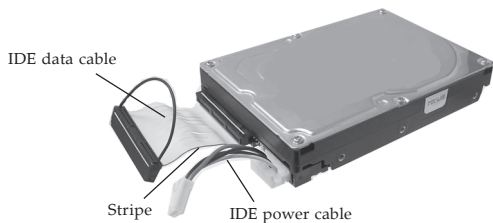
## Installing a 3.5" IDE Hard Disk Drive

1. Slide the **Release button**, see **Figure 2**, then gently grasp the panel and slide the assembly out of the case, see **Figure 8**.



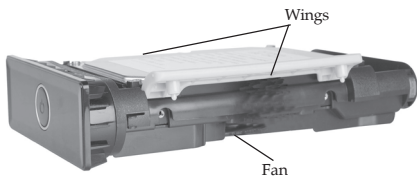
Figure 8

2. Connect the included IDE power cable and IDE data cable to the IDE hard disk, make sure the stripe on the IDE data cable is oriented to the same side as the power connector of the hard disk, see **Figure 9**.

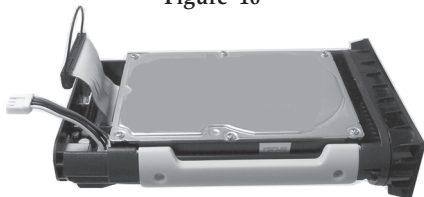


**Figure 9**

3. Pull up on the wings on both sides. Slide the IDE hard disk drive into the tray. Push the wings down to secure the hard disk drive, see **Figure 10** and **Figure 11**.

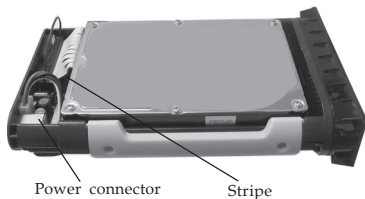


**Figure 10**



**Figure 11**

4. Connect the IDE power connector to the enclosure, then connect the IDE data cable to the enclosure. Make sure the stripe on the IDE data cable is oriented to the same side as the power connector of the enclosure, see **Figure 12**.



**Figure 12**

5. Slide the assembly back into the case. Make sure you hear a click as it locks into place.
6. Plug the included switching power adapter into the **power adapter jack of the enclosure**, then plug the power adapter into a reliable power source.
7. Use the included USB 3.0 data cable to plug the *USB 3.0 to IDE/SATA 6Gb/s 3.5" Enclosure* to the computer's USB port.
8. Power on the enclosure. Make sure that the **LED** is lit, see **Figure 1**.



Go to **Driver Installation** to complete the installation

## **Driver Installation**

---

Windows will automatically detect and install drivers for the *USB 3.0 to IDE/SATA 6Gb/s 3.5" Enclosure*. No additional driver installation is needed. **Note:** To get USB 3.0 performance, make sure your USB 3.0 controller has the correct driver installed.

## **Using the *Enclosure***

---

An additional drive icon will appear in **My Computer** when the enclosure is plugged into a USB port. The drive acts just like a conventional hard drive in your system.

## **Disconnecting From The Computer**

Before unplugging the *USB 3.0 to IDE/SATA 6Gb/s 3.5" Enclosure* from the computer, follow the steps below for your version of Windows. The same rule applies when turning off the Enclosure. *Not following the instructions may result in data corruption or damage to the hard disk drive.*

## **Windows 8 / 7 / Server 2008 R2**

1. Verify that the **LED** is not flashing before proceeding.
2. Click **Show hidden icons**, click the **Safely Remove Hardware and Eject Media** icon in the system tray by the system clock.
3. Click **Eject USB Mass Storage Device**.

## **Windows Vista / Server 2008**

1. Verify that the **LED** is not flashing before proceeding.
2. Click the **Safely Remove Hardware** icon in the system tray by the system clock.
3. Click **Safely remove USB Mass Storage Device**, then click **OK**.

## **Windows XP / Server 2003**

1. Verify that the **LED** is not flashing before proceeding.
2. Double click the **Safely Remove Hardware** icon in the system tray by the system clock.
3. Highlight **Mass Storage Device**, click **Stop**, **OK**, **OK**, then click **Close**.

# Technical Support and Warranty

---

**QUESTIONS?** SIIG's **Online Support** has answers! Simply visit our web site at [www.siig.com](http://www.siig.com) and click **Support**. Our online support database is updated daily with new drivers and solutions. Answers to your questions could be just a few clicks away. You can also submit questions online and a technical support analyst will promptly respond.

SIIG offers a 5-year manufacturer warranty with this product. This warranty covers the original purchaser and guarantees the product to be free of any defects in materials or workmanship for five (5) years from the date of purchase of the product.

SIIG will, at our discretion, repair or replace (with an identical product or product having similar features and functionality) the product if defective in materials or workmanship. This warranty gives you specific legal rights, and you may also have other rights which vary from state to state. Please see our web site for more warranty details.

If you encounter any problems with this product, please follow the procedures below.

A) If it is within the store's return policy period, please return the product to the store where you purchased from.

B) If your purchase has passed the store's return policy period, please follow the steps below to have the product repaired or replaced.

**Step 1:** Submit your RMA request.

Go to [www.siig.com](http://www.siig.com), click **Support**, then **REQUEST A PRODUCT REPLACEMENT** to submit a request to [SIIG RMA](#) or fax a request to 510-657-5962. Your RMA request will be processed, if the product is determined to be defective, an RMA number will be issued.

**Step 2:** After obtaining an RMA number, ship the product.

- Properly pack the product for shipping. All accessories that came with the original package must be included.
- Clearly write your RMA number on the top of the returned package. SIIG will refuse to accept any shipping package, and will not be responsible for a product returned without an RMA number posted on the outside of the shipping carton.
- You are responsible for the cost of shipping to SIIG. Ship the product to the following address:

**SIIG, Inc.**

**6078 Stewart Avenue**

**Fremont, CA 94538-3152, USA**

**RMA #:** \_\_\_\_\_

- SIIG will ship the repaired or replaced product via Ground in the U.S. and International Economy outside of the U.S. at no cost to the customer.

# About SIIG, Inc.

Founded in 1985, SIIG, Inc. is a leading manufacturer of IT connectivity solutions (including Serial ATA and Ultra ATA Controllers, FireWire, USB, and legacy I/O adapters) that bridge the connection between Desktop / Notebook systems and external peripherals. SIIG continues to grow by adding A/V and Digital Signage connectivity solutions to our extensive portfolio.

SIIG products offer comprehensive user manuals, many user-friendly features, and are backed by an extensive manufacturer warranty. High quality control standards are evident by the overall ease of installation and compatibility of our products, as well as one of the lowest defective return rates in the industry. SIIG products can be found in computer retail stores, mail order catalogs, through major distributors, system integrators, and VARs in the Americas and the UK, and through e-commerce sites.

## **PRODUCT NAME**

USB 3.0 to IDE/SATA 6Gb/s 3.5" Enclosure

**FCC RULES: TESTED TO COMPLY WITH FCC PART 15, CLASS B  
OPERATING ENVIRONMENT: FOR HOME OR OFFICE USE**

## **FCC COMPLIANCE STATEMENT:**

This device complies with part 15 of the FCC Rules. Operation is subject to the following two conditions: (1) This device may not cause harmful interference, and (2) this device must accept any interference received, including interference that may cause undesired operation.

## **THE PARTY RESPONSIBLE FOR PRODUCT COMPLIANCE**

SIIG, Inc.

6078 Stewart Avenue

Fremont, CA 94538-3152, USA

Phone: 510-657-8688

USB 3.0 to IDE/SATA 6Gb/s 3.5" Enclosure is a trademark of SIIG, Inc. SIIG and the SIIG logo are registered trademarks of SIIG, Inc. Microsoft and Windows are registered trademarks of Microsoft Corporation. All other names used in this publication are for identification only and may be trademarks of their respective owners.