



USB Over IP 1-Port Quick Installation Guide

Introduction

The *USB Over IP 1-Port* allows multiple users to share an external hard disk, Multi-Function printer, or other USB devices within a network.

Features and Benefits

- Compliant with USB 2.0 specification and backward compatible with USB 1.1
- Connects up to 4 devices using an additional USB hub (not included)
- Wirelessly share your USB device(s) through your wireless router
- Supports USB plug-n-play and hot-swap

Serial Number Sticker

For future product return or exchange, this serial number is required. Please keep it for your reference.

| |
|--|
| |
|--|

Serial Number

Part Number

Package Contents

- *USB Over IP 1-Port*
- AC power adapter
- Network cable
- Software CD & Quick Installation Guide

Layout

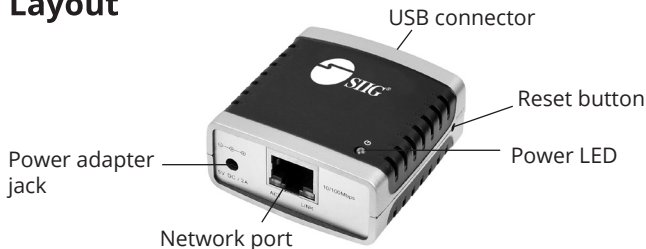


Figure 1: Layout

- **Power LED:** On when power adapter is connected
- **Power adapter jack:** Connect the included power adapter here
- **USB connector:** Connect to USB device
- **Network port:** Connect Ethernet or wireless Switch/Router
- **Reset button:** Press and hold for several seconds to go back to default settings

Hardware Installation

1. Make sure that the *USB Over IP 1-Port* is not powered on and no USB devices are connected to it. You will be instructed when to connect your USB devices later.
2. Connect the *USB Over IP 1-Port* to a router or switch on your Ethernet network.
3. Connect the power adapter to the *USB Over IP 1-Port* and plug it into a reliable power outlet.

Windows Installation

Follow the instructions below to install *USB Over IP 1-Port* driver.

Windows 8 (32-/64-bit)

1. Insert the driver CD. Close the CD autoplay box if prompted.
2. Click **Windows key** and **R**.
For 32-bit: Type **D:\Win 8\32-bit.exe**, click **OK**. (Change your D: to match your CD\DVD-ROM drive letter)

For 64-bit: Type **D:\Win8\64-bit.exe**, click **OK**. (Change your D: to match your CD\DVD-ROM drive letter)

3. At the **User Account Control**, click **Yes**.
4. At the **Windows Security**, click **Install** two times. Skip this step if not prompted.
5. At the **InstallShield Wizard Complete**, click **Finish**.
6. Click **Finish** again to restart the computer.

Windows 7 (32-/64-bit) / Server 2008 R2

1. Insert the driver CD. Close the CD autoplay box if prompted.
2. Click **Start**, in the **Search programs and files**,

For 32-bit: Type **D:\Win 7_vista_2008\32-bit.exe**, press **Enter**. (Change your D: to match your CD\DVD-ROM drive letter)

For 64-bit: Type **D:\Win 7_vista_2008\64-bit.exe**, press **Enter**. (Change your D: to match your CD\DVD-ROM drive letter)

3. At the **User Account Control**, click **Yes**.
For Server 2008 R2, skip this step.

4. At the **Windows Security**, click **Install** two times. Skip this step if not prompted.
5. At the **InstallShield Wizard Complete**, click **Finish**.
6. Click **Finish** again to restart the computer.

Windows Vista (32-/64-bit) / Server 2008 (32-/64-bit)

1. Insert the driver CD. Close the CD autoplay box if prompted.
2. Click **Start** and **Run**,
For 32-bit: Type **D:\Win 7_vista_2008\32-bit.exe**, click **OK**. (Change your D: to match your CD\DVD-ROM drive letter)
For 64-bit: Type **D:\Win 7_vista_2008\64-bit.exe**, click **OK**. (Change your D: to match your CD\DVD-ROM drive letter)
3. At the **User Account Control**, click **Allow**.
For Server 2008, skip this step.
4. At the **Windows Security**, click **Install** two times. Skip this step if not prompted.
5. At the **InstallShield Wizard Complete**, click **Finish**.

6. Click **Finish** again to restart the computer.

Windows XP (32-/64-bit) / Server 2003 (32-/64-bit)

1. Insert the driver CD. Close the CD autoplay box if prompted.
2. Click **Start** and **Run**,
For 32-bit: Type **D:\Win XP_2003\32-bit.exe**, click **OK**. (Change your D: to match your CD\DVD-ROM drive letter)
For 64-bit: Type **D:\Win XP_2003\64-bit.exe**, click **OK**. (Change your D: to match your CD\DVD-ROM drive letter)
3. At the **InstallShield Wizard Complete**, click **Finish**.
4. Click **Finish** again to restart the computer.

To Verify Windows Installation

1. Go to Device Manager to verify installation.
For Windows 8 / 7 / XP / Server 2003: Right click **Computer** or **My Computer**, click **Manage**, click **Device Manager**.
For Windows Vista: Right click **Computer**, click **Continue, Manage, Device Manager**.

For Server 2008 / 2008 R2: Right click **Computer**, click **Manage**. Double click **Diagnostics**, then click **Device Manager**.

2. Double click the **Network USB Server Device**, a **Network USB Server Device** should be displayed.

For Windows XP & Server 2003, double click the **Universal Serial Bus controllers**, a **Network USB Server Device XP** should be displayed.

USB Server Utility

This utility must be running in order to use the *USB Over IP 1-Port*.


Starting the USB Server Utility

1. After driver installed and system reboot, select **Private networks...** or **Public networks** at the prompted **Windows Security Alert**, then click **Allow access**. See **Figure 2**.

For Windows Vista, XP, 2003, click **Unblock** at the **Windows Security Alert**. Skip this step if not prompted.



Figure 2

2. To start the USB Server utility, double click the shortcut icon on the desktop  or go to the programs folder in which you installed the program and double click on the *USB Server* icon.
3. The *USB Over IP 1-Port* will appear on the main menu as **Networking USB Server 82E00C....** See **Figure 3**. If the *USB Over IP 1-Port* is not listed, click **Search** to refresh the main menu.

Networking USB Server 82E00C....(in different network segment)

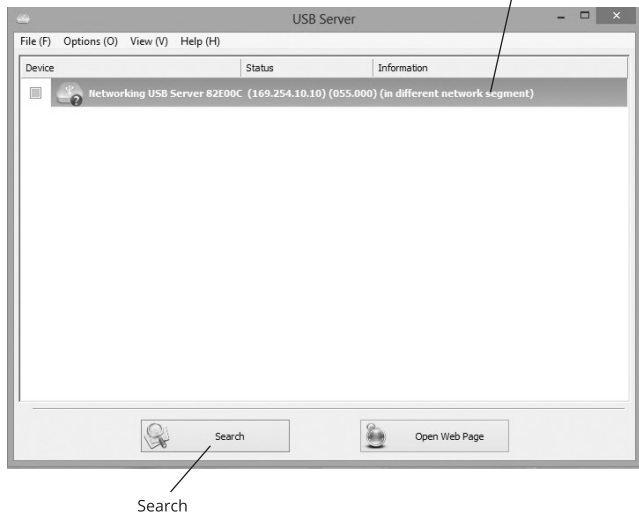


Figure 3

4. The default IP of the *USB Over IP 1-Port* is **169.254.10.10**, and the default subnet mask is **255.255.0.0**. Configure your network's IP address to be in the same network domain (subnet mask) as your *USB Over IP 1-Port*.

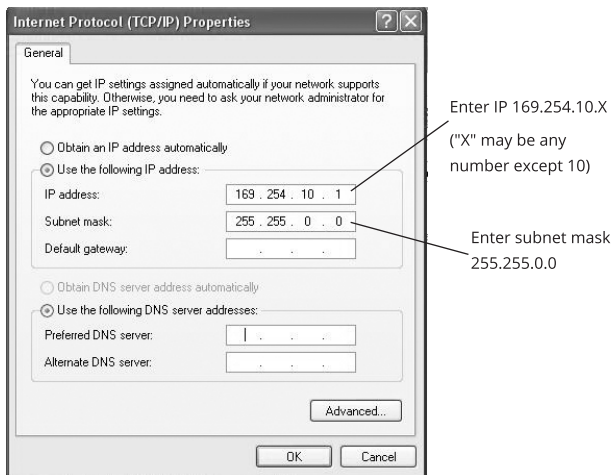


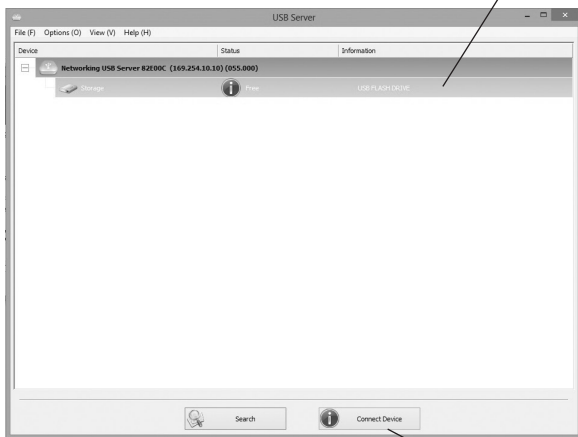
Figure 4

NOTE: Before IP configuration, the name displayed on the USB Server main menu will be similar to "in different network segment". See **Figure 3**.

After IP configuration, the description "in different network segment" will disappear.

5. Connect your USB device to the *USB Over IP 1-Port's* USB connector. Refer to your USB device's manual for further installation steps, if needed.
6. Once the USB device is detected, it will show on the USB Server main menu. Click (select) the device, then click **Connect Device** to make the connection. See **Figure 5**.

Select the device by clicking it



Connect Device

Figure 5

- Once the connection is successfully made, a green circled check will appear beside the selected device. See **Figure 6**.

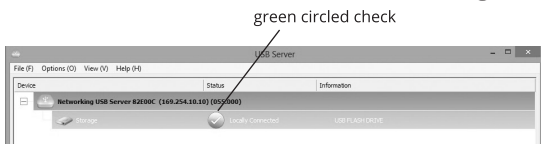


Figure 6

Default Settings of USB Over IP 1-Port

- Click the **Open Web Page** button at the USB Server main menu, or right click the listed **Networking USB Server 82E00C...** and click **Open Web Page** for the default settings of *USB Over IP 1-Port*.

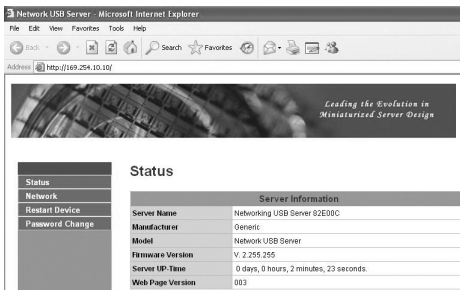


Figure 7

Configure the USB Over IP 1-Port

1. Right click on the listed **Networking USB Server 82E00C...** and click **Server Configurations** to change the default settings, if needed. See **Figure 8**.

Note: If there's a device connected to the *USB Over IP 1-Port*, make sure the connection status is disconnected; otherwise the configuration is not allowed.

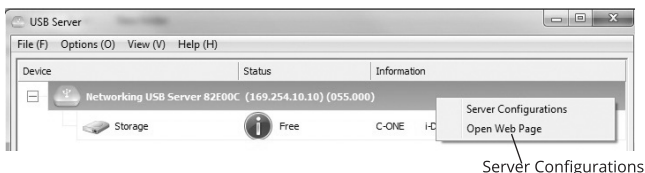


Figure 8

2. Change your Server Name, IP Address and Subnet mask, if needed. Click **Set** after all the changes are done. See **Figure 9**.

Note: Uncheck the **Use DHCP** box before changing the settings.

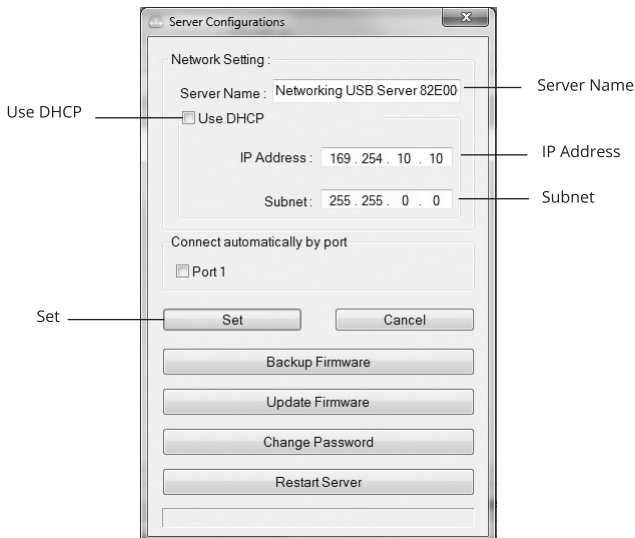


Figure 9

3. Other available configurations:
- Click **Update Firmware** to update the firmware, if available.
- Click **Change Password** if you want to change the password.
- Click **Restart Server** to shut down and restart the USB Server utility.

Technical Support and Warranty

QUESTIONS? SIIG's **Online Support** has answers! Simply visit our web site at *www.siig.com* and click **Support**. Our online support database is updated daily with new drivers and solutions. Answers to your questions could be just a few clicks away. You can also submit questions online and a technical support analyst will promptly respond.

SIIG offers a 3-year manufacturer warranty with this product. This warranty covers the original purchaser and guarantees the product to be free of any defects in materials or workmanship for three (3) years from the date of purchase of the product.

SIIG will, at our discretion, repair or replace (with an identical product or product having similar features and functionality) the product if defective in materials or workmanship. This warranty gives you specific legal rights, and you may also have other rights which vary from state to state. Please see our web site for more warranty details.

If you encounter any problems with this product, please follow the procedures below.

A) If it is within the store's return policy period, please return the product to the store where you purchased from.

B) If your purchase has passed the store's return policy period, please follow the steps below to have the product repaired or replaced.

Step 1: Submit your RMA request.

Go to **www.siig.com**, click **Support**, then **REQUEST A PRODUCT REPLACEMENT** to submit a request to [SIIG RMA](#) or fax a request to 510-657-5962. Your RMA request will be processed, if the product is determined to be defective, an RMA number will be issued.

Step 2: After obtaining an RMA number, ship the product.

- Properly pack the product for shipping. All accessories that came with the original package must be included.
- Clearly write your RMA number on the top of the returned package. SIIG will refuse to accept any shipping package, and will not be responsible for a product returned without an RMA number posted on the outside of the shipping carton.
- You are responsible for the cost of shipping to SIIG. Ship the product to the following address:

SIIG, Inc.
6078 Stewart Avenue
Fremont, CA 94538-3152, USA
RMA #: _____

- SIIG will ship the repaired or replaced product via Ground in the U.S. and International Economy outside of the U.S. at no cost to the customer.

About SIIG, Inc.

Founded in 1985, SIIG, Inc. is a leading manufacturer of IT connectivity solutions (including Serial ATA and Ultra ATA Controllers, FireWire, USB, and legacy I/O adapters) that bridge the connection between Desktop/ Notebook systems and external peripherals. SIIG continues to grow by adding A/V and Digital Signage connectivity solutions to our extensive portfolio.

SIIG products offer comprehensive user manuals, many user-friendly features, and are backed by an extensive manufacturer warranty. High quality control standards are evident by the overall ease of installation and compatibility of our products, as well as one of the lowest defective return rates in the industry. SIIG products can be found in computer retail stores, mail order catalogs, through major distributors, system integrators, and VARs in the Americas and the UK, and through e-commerce sites.

PRODUCT NAME

USB Over IP 1-Port

FCC RULES: TESTED TO COMPLY WITH FCC PART 15, CLASS B
OPERATING ENVIRONMENT: FOR HOME OR OFFICE USE

FCC COMPLIANCE STATEMENT:

This device complies with part 15 of the FCC Rules. Operation is subject to the following two conditions: (1) This device may not cause harmful interference, and (2) this device must accept any interference received, including interference that may cause undesired operation.

THE PARTY RESPONSIBLE FOR PRODUCT COMPLIANCE

SIIG, Inc.

6078 Stewart Avenue

Fremont, CA 94538-3152, USA

Phone: 510-657-8688

USB Over IP 1-Port is a trademark of SIIG, Inc. SIIG and the SIIG logo are registered trademarks of SIIG, Inc. All other names used in this publication are for identification only and may be trademarks of their respective owners.

Nov, 2018

copyright © 2018 by SIIG, Inc. All rights reserved.