



# Dual Port Gigabit Ethernet Server PCIe x4 Network Card

## Installation Guide

### **Introduction**

---

SIIG's *Dual Port Gigabit Ethernet Server PCIe x4 Network Card* easily adds two Gigabit 10/100/1000 Mb/s Ethernet networking ports to your PC or server.

### **Key Features and Benefits**

- Powered by Intel® Ethernet I350 chipset
- Compliant with PCIe Specification Revision 2.1
- Compliant with IEEE 802.3, IEEE 802.3u, IEEE 802.3ab, IEEE 802.3ad (link aggregation), IEEE 802.1Q (VLAN tagging)
- Supports 10/100/1000Mbps data rate auto-negotiation
- Supports Remote and Wake On LAN (WOL) power management
- Full duplex mode that doubles the network connection speed

## **System Requirements**

- PCI Express-enabled system with an available 4-lane (or more) PCI Express slot
- Windows 8.1 (32-/64-bit) / 8 (32-/64-bit) / 7 (32-/64-bit) / Vista (32-/64-bit) / XP (32-/64-bit) / Server 2012 / Server 2003 (32-/64-bit) / Server 2008 (32-/64-bit) / Server 2008 R2

## **Package Contents**

- *Dual Port Gigabit Ethernet Server PCIe x4 Network Card*
- Low profile bracket
- Driver CD
- Installation guide

# Layout

---

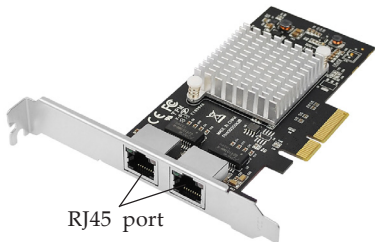
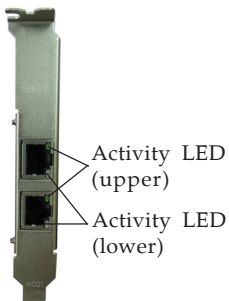


Figure 1

## LED Indicators

Two LEDs to monitor your network connection are visible through the slot bracket.



	Activity LED (upper)	Activity LED (lower)
1000Mbps	Green	Orange
100Mbps	Green	Green
10Mbps	Green	Off

Figure 2

## Hardware Installation

---

**Note:** For low profile systems, replace the currently mounted bracket with the included low profile bracket.

General instructions for installing the card are provided below. Since the design of computer cases and motherboards vary, refer to your computer's reference manual for further information, if needed.

Static Electricity Discharge may permanently damage your system. Discharge any static electricity build up in your body by touching your computer case for a few seconds. Avoid any contact with internal parts and handle cards only by their external edges.

1. Turn OFF the power to your computer.
2. Unplug the power cord, remove the computer cover.
3. Remove the slot bracket from an available PCI Express slot.
4. Carefully align the card to the selected PCI Express slot, push the board down until it is well seated.

5. Replace the slot bracket holding screw to secure the card, then replace the computer cover and reconnect the power cord.

## **Windows Installation**

---

This section provides instructions on how to install the *Dual Port Gigabit Ethernet Server PCIe x4 Network Card* drivers.

### **Server 2012 / Windows 8.1 (32-/64-bit) / Windows 8 (32-/64-bit)**

For Windows 8.1 and 8, the driver is already embedded in the system. Simply install the board and boot up Windows, the board is ready for use. No additional driver installation is needed.

### **Windows 7 (32-/64-bit) / Server 2008 R2**

1. Install the board and boot up Windows.
2. Insert the driver CD. Close the CD autoplay box if prompted.
3. For Windows 7 32-bit: Click **Start**, at **Search programs and files**, type **D:\PROWin32**, press **Enter**. (Change **D:** to match your CD\DVD-ROM drive letter)

- For Windows 7 64-bit / Server 2008 R2: Click **Start**, at **Search programs and files**, type **D:\PROWinx64**, press **Enter**. (Change **D:** to match your CD\DVD-ROM drive letter)
4. At the **User Account Control**, click **Yes**. Skip this step if not prompted.
  5. At **Intel(R) Network Connections** window, click **Yes** to continue. Skip this step if not prompted.
  6. Click **Next**, select **I accept the terms in the license agreement**, and click **Next**.
  7. Make sure **Intel(R) PROSet for Windows...** and **Advanced Network Services** are checked, click **Next**, and click **Install**.

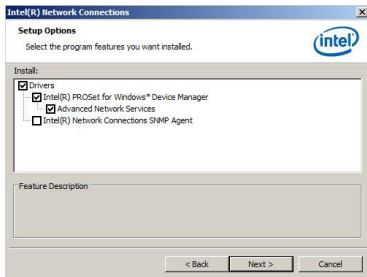


Figure 3

8. Wait for a few minutes for the installation to complete, then click **Finish**.
9. Restart Windows, the card is ready for use.

## **Windows Vista (32-/64-bit) / Server 2008 (32-/64-bit)**

1. Install the board and boot up Windows.
2. Click **Cancel** at the **Found New Hardware**.
3. Insert the driver CD. Close the CD autoplay box if prompted.
4. *For 32-bit:* Click **Start**, at the **Start Search**, type **D:\PROWin32**, press **Enter**. (Change **D:** to match your CD\DVD-ROM drive letter)  
*For 64-bit:* Click **Start**, at the **Start Search**, type **D:\PROWinx64**, press **Enter**. (Change **D:** to match your CD\DVD-ROM drive letter)
5. At the User Account Control, click **Allow**. Skip this step if not prompted.
6. At **Intel(R) Network Connections** window, click **Yes** to continue. Skip this step if not prompted.

7. Click **Next**, select **I accept the terms in the license agreement**, and click **Next**.
8. Make sure **Intel(R) PROSet for Windows...** and **Advanced Network Services** are checked, click **Next**, and click **Install**.

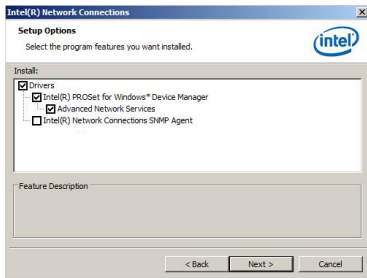


Figure 4

9. Wait for a few minutes for the installation to complete, then click **Finish**.
10. Restart Windows, the card is ready for use.

## **Windows XP (32-/64-bit) / Server 2003 (32-/64-bit)**

1. Install the board and boot up Windows.
2. Insert the driver CD. Close the CD autoplay window if prompted.



3. Click **Cancel** at the Found New Hardware.
4. For 32-bit: Click **Start, Run**, type **D:\PRO2K3XP\_32**, press **Enter**.  
For 64-bit: Click **Start, Run**, type **D:\PRO2K3XP\_x64**, press **Enter**.  
(Change **D:** to match your CD\DVD-ROM drive letter)
5. At **Intel(R) Network Connections** window, click **Yes** to continue. Skip this step if not prompted.
6. Click **Next**. Select **I accept the terms in the license agreement**, and click **Next**.
7. Make sure **Intel(R) PROSet for Windows...** and **Advanced Network Services** are checked, click **Next**, and click **Install**.

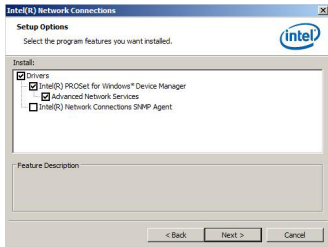


Figure 5

8. Wait for a few minutes for the installation to complete, then click **Finish**.
9. Restart Windows, the card is now ready for use.

## **To Verify Windows Installation**

1. Go to Device Manager to verify installation.  
*For Windows 8.1:* Right click **This PC**, click **Manage**, then click **Device Manager**.  
*For Windows 8 / 7 / XP / Server 2003:* Right click **Computer** or **My computer**, click **Manage**, then click **Device Manager**.  
*For Windows Vista:* Right click **Computer**, click **Manage**, click **Continue**, then click **Device Manager**.  
*For Windows Server 2012:* Click **Windows key**, right click **Computer**, click **Properties**, then click **Device Manager**.  
*For Windows Server 2008 / 2008 R2:* Right click **Computer**, click **Manage**, double click **Diagnostics**, then click **Device Manager**.
2. Double click **Network adapters, Intel(R) I350 Gigabit Network Connection** should be displayed two times.

# Technical Support and Warranty

---

**QUESTIONS?** SIIG's **Online Support** has answers! Simply visit our web site at [www.siig.com](http://www.siig.com) and click **Support**. Our online support database is updated daily with new drivers and solutions. Answers to your questions could be just a few clicks away. You can also submit questions online and a technical support analyst will promptly respond.

SIIG offers a 5-year manufacturer warranty with this product. This warranty covers the original purchaser and guarantees the product to be free of any defects in materials or workmanship for five (5) years from the date of purchase of the product.

SIIG will, at our discretion, repair or replace (with an identical product or product having similar features and functionality) the product if defective in materials or workmanship. This warranty gives you specific legal rights, and you may also have other rights which vary from state to state. Please see our web site for more warranty details.

If you encounter any problems with this product, please follow the procedures below.

A) If it is within the store's return policy period, please return the product to the store where you purchased from.

B) If your purchase has passed the store's return policy period, please follow the steps below to have the product repaired or replaced.

**Step 1:** Submit your RMA request.

Go to [www.siig.com](http://www.siig.com), click **Support**, then **REQUEST A PRODUCT REPLACEMENT** to submit a request to [SIIG RMA](#) or fax a request to 510-657-5962. Your RMA request will be processed, if the product is determined to be defective, an RMA number will be issued.

**Step 2:** After obtaining an RMA number, ship the product.

- Properly pack the product for shipping. All accessories that came with the original package must be included.
- Clearly write your RMA number on the top of the returned package. SIIG will refuse to accept any shipping package, and will not be responsible for a product returned without an RMA number posted on the outside of the shipping carton.
- You are responsible for the cost of shipping to SIIG. Ship the product to the following address:

**SIIG, Inc.**

**6078 Stewart Avenue**

**Fremont, CA 94538-3152, USA**

**RMA #:** \_\_\_\_\_

- SIIG will ship the repaired or replaced product via Ground in the U.S. and International Economy outside of the U.S. at no cost to the customer.

## About SIIG, Inc.

---

Founded in 1985, SIIG, Inc. is a leading manufacturer of IT connectivity solutions (including Serial ATA and Ultra ATA Controllers, FireWire, USB, and legacy I/O adapters) that bridge the connection between Desktop/Notebook systems and external peripherals. SIIG continues to grow by adding A/V and Digital Signage connectivity solutions to our extensive portfolio. SIIG products offer comprehensive user manuals, many user-friendly features, and are backed by an extensive manufacturer warranty. High quality control standards are evident by the overall ease of installation and compatibility of our products, as well as one of the lowest defective return rates in the industry. SIIG products can be found in computer retail stores, mail order catalogs, through major distributors, system integrators, and VARs in the Americas and the UK, and through e-commerce sites.

### **PRODUCT NAME**

Dual Port Gigabit Ethernet Server PCIe x4 Network Card

**FCC RULES: TESTED TO COMPLY WITH FCC PART 15, CLASS B**

**OPERATING ENVIRONMENT: FOR HOME OR OFFICE USE**

### **FCC COMPLIANCE STATEMENT:**

This device complies with part 15 of the FCC Rules. Operation is subject to the following two conditions: (1) This device may not cause harmful interference, and (2) this device must accept any interference received, including interference that may cause undesired operation.

### **THE PARTY RESPONSIBLE FOR PRODUCT COMPLIANCE**

SIIG, Inc.

6078 Stewart Avenue

Fremont, CA 94538-3152, USA

Phone: 510-657-8688

Dual Port Gigabit Ethernet Server PCIe x4 Network Card is a trademark of SIIG, Inc. SIIG and the SIIG logo are registered trademarks of SIIG, Inc. Microsoft and Windows are registered trademarks of Microsoft Corporation. All other names used in this publication are for identification only and may be trademarks of their respective owners.