



DisplayPort 1.2 to 2-Port HDMI Active Adapter Installation Guide

Introduction

The *DisplayPort 1.2 to 2-Port HDMI Active Adapter* distributes one DisplayPort source to two HDMI displays.

Key Features and Benefits

- Distribute content from one DisplayPort input and two HDMI outputs
- Supports DisplayPort 1, 2 and 4 lanes and link rates up to 3.2Gbps
- Supports SST (Single-Stream Transport) or MST (Multi-Stream Transport)
- Supports video wall function: Tiling multiple screens together to form one large screen
- Supports 1080p and 3840x1080 when two displays are connected

Package Contents

- *DisplayPort 1.2 to 2-Port HDMI Active Adapter*
- Installation guide

Layout



Figure 1: Layout

- **DisplayPort IN:** Connects to your DisplayPort source device
- **HDMI OUT (1-2):** Connects to your HDMI displays

Hardware Installation

1. Power off all devices you plan to connect to this adapter.
2. Insert the **DisplayPort IN** of the *DisplayPort 1.2 to 2-Port HDMI Active Adapter* to your DisplayPort source.
3. Connect your HDMI monitors to the **HDMI OUT** (1 and 2) of the active adapter using HDMI cables (HDMI cables not included).
4. Power on all of the connected devices.
5. The *DisplayPort 1.2 to 2-Port HDMI Active Adapter* is ready for use.

Application

The *DisplayPort 1.2 to 2-Port HDMI Active Adapter* supports 2 HDMI displays simultaneously.

2 HDMI Displays

Extended Mode (AMD Graphics with Eyefinity)

The two 2 HDMI displays act as one large extended display.

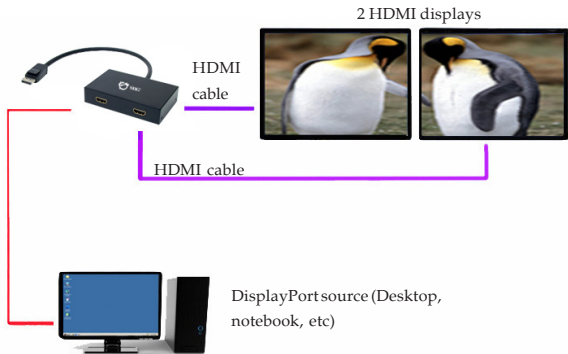


Figure 2

Extended Mode (Multi-Stream Transport)

The two 2 HDMI displays are individual.

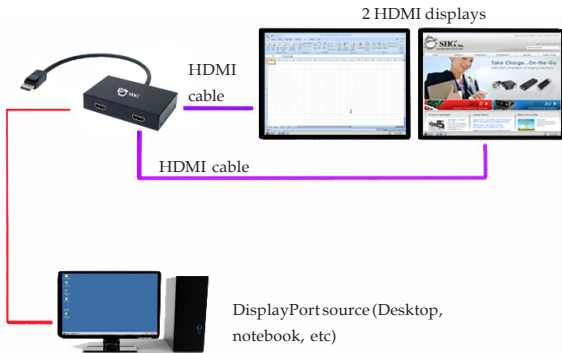


Figure 3

Mirror Mode

Resolutions under 1920x1080:

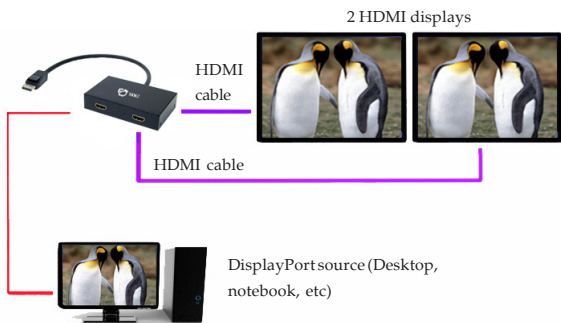


Figure 4

Resolutions above 1920x1080:

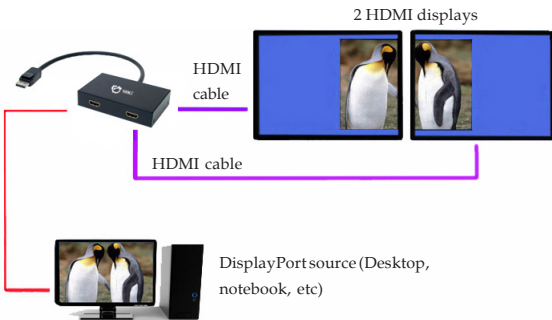


Figure 5

4 HDMI Displays

Two *DisplayPort 1.2 to 2-Port HDMI Active Adapter* can work together as a 4-display video wall. **Important:** Supports AMD with Eyefinity Technology graphic cards with 2 DisplayPort output connectors only.

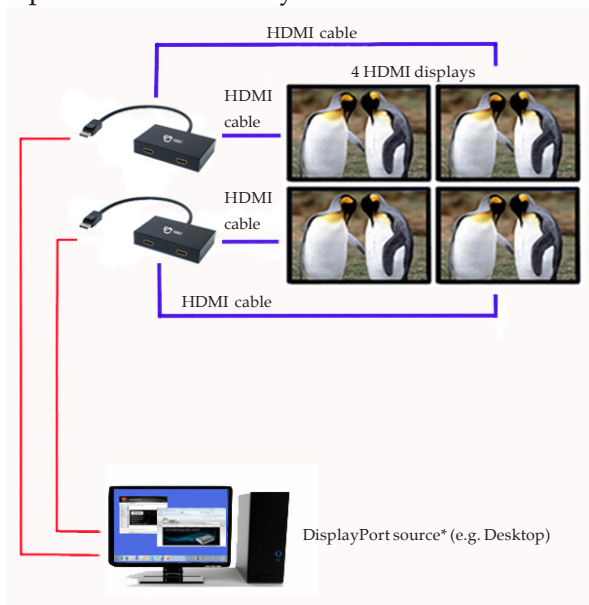


Figure 6

Graphic Card Setup

At the AMD Catalyst Control Center, click **AMD Eyefinity Multi-Display** for advanced display mode setup. See **Figure 7**.

Refer to your graphic card menu for more details.

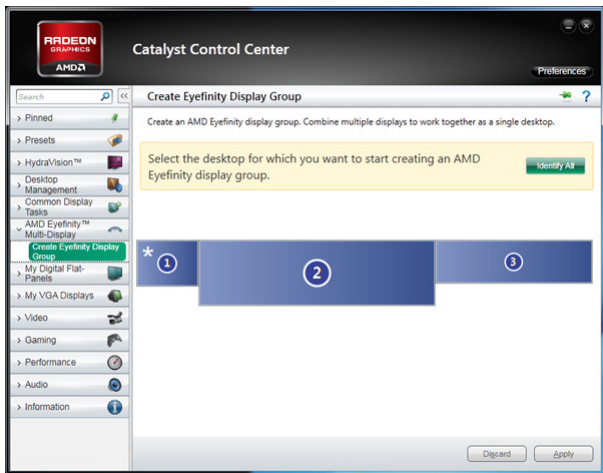


Figure 7

Supported Video Resolutions

Refer to Table 1 for the supported resolution under different conditions (2 HDMI displays, or 4 HDMI displays via two *DisplayPort 1.2 to 2-Port HDMI Active Adapter*):

Supported Video Resolutions (TV Wall)			
Two Monitors		Four Monitors	
Computer Setting	Each Monitor	Computer Setting	Each Monitor
3840x1080	1920x1080	3840x2160	1920x1080
2560x1024	1280x1024	2560x2048	1280x1024
2048x768	1024x768	2048x1536	1024x768
3360x1050	1680x1050	3360x2100	1680x1050
2880x900	1440x900	2880x1800	1440x900
1600x600	800x600	1600x1200	800x600
1280x480	640x480	1280x960	640x480
2800x1050	1400x2050	2800x2100	1400x1050

Table 1

***Note:** The timing is listed in EDID extension block. Some old display drivers may not support it.

The actual output resolution is determined by the EDID of each display. We suggest that you use the same brand and model displays for the best video output.

Blank Page

Technical Support and Warranty

QUESTIONS? SIIG's **Online Support** has answers! Simply visit our web site at www.siig.com and click **Support**. Our online support database is updated daily with new drivers and solutions. Answers to your questions could be just a few clicks away. You can also submit questions online and a technical support analyst will promptly respond.

SIIG offers a 3-year manufacturer warranty with this product. This warranty covers the original purchaser and guarantees the product to be free of any defects in materials or workmanship for three (3) years from the date of purchase of the product.

SIIG will, at our discretion, repair or replace (with an identical product or product having similar features and functionality) the product if defective in materials or workmanship. This warranty gives you specific legal rights, and you may also have other rights which vary from state to state. Please see our web site for more warranty details.

If you encounter any problems with this product, please follow the procedures below.

A) If it is within the store's return policy period, please return the product to the store where you purchased from.

B) If your purchase has passed the store's return policy period, please follow the steps below to have the product repaired or replaced.

Step 1: Submit your RMA request.

Go to www.siig.com, click **Support**, then **REQUEST A PRODUCT REPLACEMENT** to submit a request to [SIIG RMA](#) or fax a request to 510-657-5962. Your RMA request will be processed, if the product is determined to be defective, an RMA number will be issued.

Step 2: After obtaining an RMA number, ship the product.

- Properly pack the product for shipping. All accessories that came with the original package must be included.
- Clearly write your RMA number on the top of the returned package. SIIG will refuse to accept any shipping package, and will not be responsible for a product returned without an RMA number posted on the outside of the shipping carton.
- You are responsible for the cost of shipping to SIIG. Ship the product to the following address:

SIIG, Inc.
6078 Stewart Avenue
Fremont, CA 94538-3152, USA

RMA #: _____

- SIIG will ship the repaired or replaced product via Ground in the U.S. and International Economy outside of the U.S. at no cost to the customer.

About SIIG, Inc.

Founded in 1985, SIIG, Inc. is a leading manufacturer of IT connectivity solutions (including Serial ATA and Ultra ATA Controllers, FireWire, USB, and legacy I/O adapters) that bridge the connection between Desktop/ Notebook systems and external peripherals. SIIG continues to grow by adding A/V and Digital Signage connectivity solutions to our extensive portfolio.

SIIG products offer comprehensive user manuals, many user-friendly features, and are backed by an extensive manufacturer warranty. High quality control standards are evident by the overall ease of installation and compatibility of our products, as well as one of the lowest defective return rates in the industry. SIIG products can be found in computer retail stores, mail order catalogs, through major distributors, system integrators, and VARs in the Americas and the UK, and through e-commerce sites.

PRODUCT NAME

DisplayPort 1.2 to 2-Port HDMI Active Adapter

FCC RULES: TESTED TO COMPLY WITH FCC PART 15, CLASS B

OPERATING ENVIRONMENT: FOR HOME OR OFFICE USE

FCC COMPLIANCE STATEMENT:

This device complies with part 15 of the FCC Rules. Operation is subject to the following two conditions: (1) This device may not cause harmful interference, and (2) this device must accept any interference received, including interference that may cause undesired operation.

THE PARTY RESPONSIBLE FOR PRODUCT COMPLIANCE

SIIG, Inc.

6078 Stewart Avenue

Fremont, CA 94538-3152, USA

Phone: 510-657-8688

DisplayPort 1.2 to 2-Port HDMI Active Adapter is a trademark of SIIG, Inc. SIIG and the SIIG logo are registered trademarks of SIIG, Inc. All other names used in this publication are for identification only and may be trademarks of their respective owners.