



# DisplayPort 1.2 (MST) to 2-Port DisplayPort Splitter Installation Guide

## Introduction

---

The *DisplayPort 1.2 (MST) to 2-Port DisplayPort Splitter* distributes one DisplayPort source to two DisplayPort displays with Multiple Stream Transport and video wall function.

## Key Features and Benefits

- Splits a single DisplayPort output source to 2 DisplayPort displays supporting Mirror, Extend, or Video Wall display modes
- Compliant with DisplayPort 1, 2, or 4 lanes at 1.62Gbps, 2.7Gbps and 5.4Gbps transmission speed respectively
- Compatible with AMD Eyefinity technology
- Supports DisplayPort 1.2 MST multi video/audio streams

- Resolution:  
Single output: up to 4Kx2K @60Hz  
Dual output: up to 4Kx2K @30Hz or 1920x1080 @60Hz
- Supports 7.1 Ch audio up to 192kHz sampling rate
- Supports deep color RGB/YCC (4:4:4) and YCC (4:2:2/4:2:0) 16-bit color
- Works with existing DP cable and connectors, no software installation required

## **Package Contents**

- *DisplayPort 1.2 (MST) to 2-Port DisplayPort Splitter*
- Power adapter
- Installation guide

# Layout



Figure 1: Front Panel Layout

- **DC 5V:** Power adapter jack for the included 5V power adapter
- **Power LED:** On when power adapter is connected
- **DP IN:** Connects to your DisplayPort source

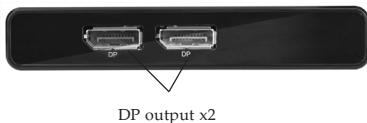
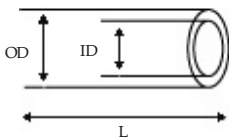


Figure 2: Rear Panel Layout

- **DP output (1-2):** Connects to your DisplayPort displays

## DC Power Jack

- Refer to the table below for the specifications of the power adapter.




Outside diameter (OD)	Inside diameter (ID)	Plug length (L)	Negative / Positive
3.5(mm)	1.35(mm)	10(mm)	 *Center pin for positive voltage and the outer shield for negative voltage

Table 1: Power Jack Specifications

## Hardware Installation

1. Power off all devices you plan to connect to this splitter.
2. Connect your source's DisplayPort out to the splitter's **DP input** using a DisplayPort cable (DisplayPort cable not included).

3. Connect your DisplayPort monitors to the splitter's **DP output** with DisplayPort cables (DisplayPort cables not included).
4. Connect the included power adapter to the splitter's power jack and plug it into a reliable power outlet.
5. Power on all of the connected devices.
6. The splitter is ready for use.

# Application

The *DisplayPort 1.2 (MST) to 2-Port DisplayPort Splitter* supports either 2 DisplayPort displays or 4 DisplayPort displays simultaneously (2 splitters + 2 DisplayPort outputs are required for 4 DisplayPort displays).

## 2 DisplayPort Displays

### \* Mirror Mode

*For education, meetings, or presentations*

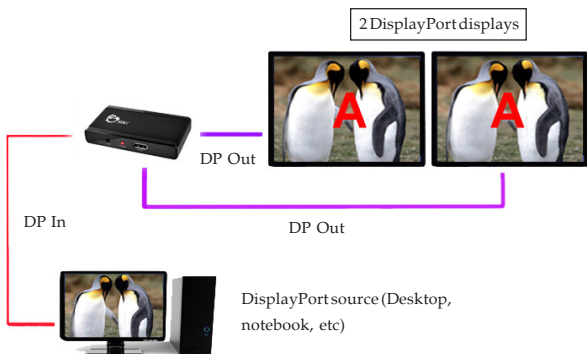


Figure 3

## \* Extended Mode (Multi-Stream Transport)

*For business or entertainment*

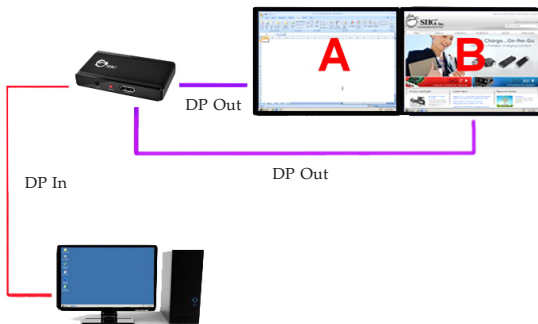


Figure 4

## \* SLS Video Wall Mode - 1x2 (Eyefinity Technical)

*For art designer or panoramic view*

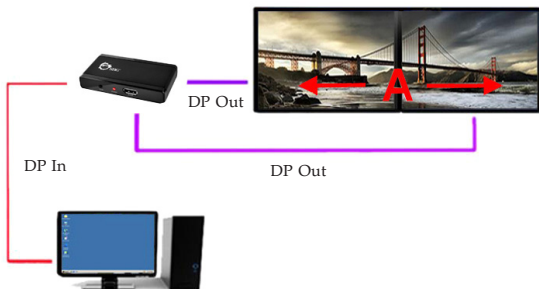


Figure 5

## 4 DisplayPort Displays (2 Splitters)

### \* SLS Video Wall Mode - 2x2 (Eyefinity Technical)

*For advertisement, exhibition, or show*

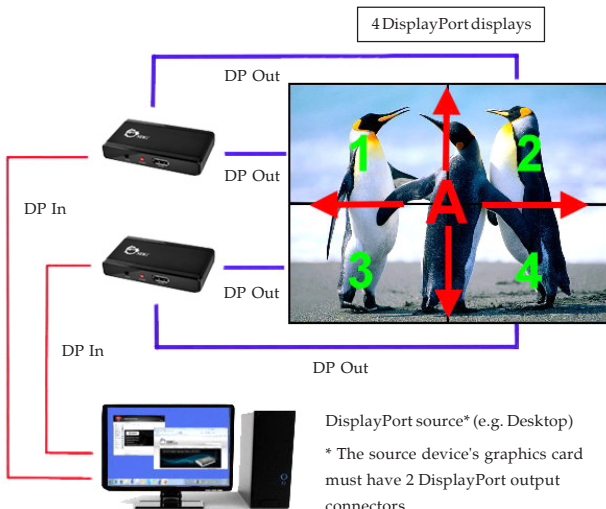


Figure 6

### Note:

AMD with Eyefinity Technology graphic cards support SLS Video Wall Mode - 1x2 & 2x2 only.



# Graphic Card Setup

At the AMD Catalyst Control Center, click **AMD Eyefinity Multi-Display** for advanced display mode setup. See **Figure 7**.

Refer to your graphic card menu for more details.

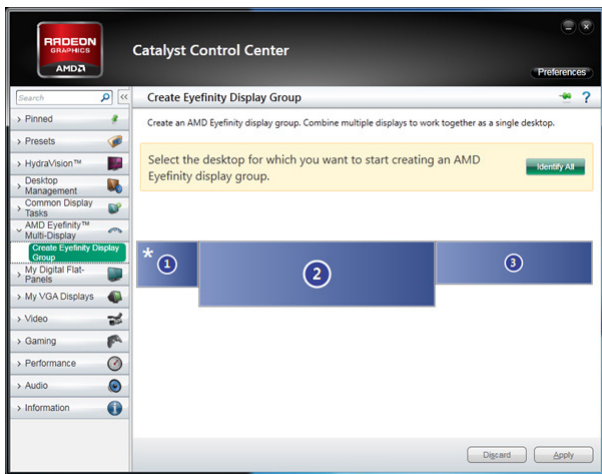


Figure 7

## Supported Video Resolutions

Refer to Table 2 for supported resolution under different video modes (2 DisplayPort displays, or 4 DisplayPort displays via two *DisplayPort 1.2 Splitters*):

Supported Video Resolutions (TV Wall)			
Two Monitors		Four Monitors (2x2)	
Computer Setting	Each Monitor	Computer Setting	Each Monitor
3840 x 1200	1920 x 1200	3840 x 2160	1920 x 1080
2560 x 1024	1280 x 1024	2560 x 2048	1280 x 1024
2048 x 768	1024 x 768	2048 x 1536	1024 x 768
3360 x 1050	1680 x 1050	3360 x 2100*	1680 x 1050
2880 x 900	1440 x 900	2880 x 1800*	1440 x 900
1600 x 600	800 x 600	1600 x 1200*	800 x 600
1280 x 480	640 x 480	1280 x 960*	640 x 480
2800 x 1050	1400 x 1050	2800 x 2100*	1400 x 1050

Table 2

**\*Note:** The timing is listed in EDID extension block. Some old display drivers may not support video wall feature.

The actual output resolution is determined by the EDID of each display. We suggest that you use the same brand and model DisplayPort displays for the best video output.

# Technical Support and Warranty

---

**QUESTIONS?** SIIG's **Online Support** has answers! Simply visit our web site at [www.siig.com](http://www.siig.com) and click **Support**. Our online support database is updated daily with new drivers and solutions. Answers to your questions could be just a few clicks away. You can also submit questions online and a technical support analyst will promptly respond.

SIIG offers a 2-year manufacturer warranty with this product. This warranty covers the original purchaser and guarantees the product to be free of any defects in materials or workmanship for two (2) years from the date of purchase of the product.

SIIG will, at our discretion, repair or replace (with an identical product or product having similar features and functionality) the product if defective in materials or workmanship. This warranty gives you specific legal rights, and you may also have other rights which vary from state to state. Please see our web site for more warranty details.

If you encounter any problems with this product, please follow the procedures below.

A) If it is within the store's return policy period, please return the product to the store where you purchased from.

B) If your purchase has passed the store's return policy period, please follow the steps below to have the product repaired or replaced.

**Step 1:** Submit your RMA request.

Go to [www.siig.com](http://www.siig.com), click **Support**, then **REQUEST A PRODUCT REPLACEMENT** to submit a request to [SIIG RMA](#) or fax a request to 510-657-5962. Your RMA request will be processed, if the product is determined to be defective, an RMA number will be issued.

**Step 2:** After obtaining an RMA number, ship the product.

- Properly pack the product for shipping. All accessories that came with the original package must be included.
- Clearly write your RMA number on the top of the returned package. SIIG will refuse to accept any shipping package, and will not be responsible for a product returned without an RMA number posted on the outside of the shipping carton.
- You are responsible for the cost of shipping to SIIG. Ship the product to the following address:

**SIIG, Inc.**

**6078 Stewart Avenue**

**Fremont, CA 94538-3152, USA**

**RMA #:** \_\_\_\_\_

- SIIG will ship the repaired or replaced product via Ground in the U.S. and International Economy outside of the U.S. at no cost to the customer.

## About SIIG, Inc.

---

Founded in 1985, SIIG, Inc. is a leading manufacturer of IT connectivity solutions (including Serial ATA and Ultra ATA Controllers, FireWire, USB, and legacy I/O adapters) that bridge the connection between Desktop/ Notebook systems and external peripherals. SIIG continues to grow by adding A/V and Digital Signage connectivity solutions to our extensive portfolio.

SIIG products offer comprehensive user manuals, many user-friendly features, and are backed by an extensive manufacturer warranty. High quality control standards are evident by the overall ease of installation and compatibility of our products, as well as one of the lowest defective return rates in the industry. SIIG products can be found in computer retail stores, mail order catalogs, through major distributors, system integrators, and VARs in the Americas and the UK, and through e-commerce sites.

### **PRODUCT NAME**

**DisplayPort 1.2 (MST) to 2-Port DisplayPort Splitter**

**FCC RULES: TESTED TO COMPLY WITH FCC PART 15, CLASS B**

**OPERATING ENVIRONMENT: FOR HOME OR OFFICE USE**

### **FCC COMPLIANCE STATEMENT:**

This device complies with part 15 of the FCC Rules. Operation is subject to the following two conditions: (1) This device may not cause harmful interference, and (2) this device must accept any interference received, including interference that may cause undesired operation.

### **THE PARTY RESPONSIBLE FOR PRODUCT COMPLIANCE**

SIIG, Inc.

6078 Stewart Avenue

Fremont, CA 94538-3152, USA

Phone: 510-657-8688

DisplayPort 1.2 (MST) to 2-Port DisplayPort Splitter is a trademark of SIIG, Inc. SIIG and the SIIG logo are registered trademarks of SIIG, Inc. All other names used in this publication are for identification only and may be trademarks of their respective owners.

July, 2015

Copyright © 2015 by SIIG, Inc. All rights reserved.