



DP Gigabit Ethernet PCIe Installation Guide

Introduction

The *DP Gigabit Ethernet PCIe* adds Gigabit Ethernet to your system. This adapter supports 10/100/1000 Ethernet, eliminating network bottlenecks.

Features and Benefits

- Adds a high-speed Gigabit Ethernet port to your PCI Express enabled system
- Dual Profile design to work with full height or low profile chassis
- Compliant with 10/100/1000 IEEE 802.3 specification
- Easy installation and installs in any available PCI Express (PCIe) slot
- Supports 10/100/1000 Mbps data rate, auto-negotiation and full duplex

Lot Number Sticker

For future product return or exchange, this lot number is required. Please keep it for your reference.



System Requirements

- PCI Express-enabled system with an available PCI Express slot
- Windows® 10 (32-/64-bit) / 8.x (32-/64-bit) / 7 (32-/64-bit) / Vista (32-/64-bit) / XP (32-/64-bit) / 2000

- Windows Server® 2003 & 2008 (32-/64-bit) / 2008 R2 / 2012 / 2012 R2
- Mac OS X® 10.5.x to 10.9.5

Package Contents

- *DP Gigabit Ethernet PCIe*
- Spare enhanced low profile bracket
- Driver CD and installation guide

Layout

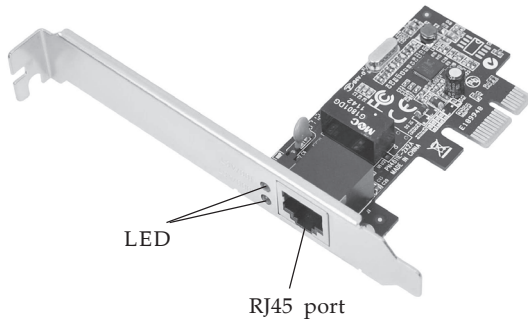


Figure 1. DP Gigabit Ethernet PCIe

LED Indicators

Two LEDs to monitor your network connection are visible through the slot bracket.

- **100/ACT:** 100 Mb/s network connection and network activity
- **1000/ACT:** Gigabit (1000 Mb/s) network connection and network activity

Hardware Installation

Note: For low profile systems, replace the currently mounted bracket with the included low profile bracket.

General instructions for installing the card are provided below. Since the design of computer cases and motherboards vary, refer to your computer's reference manual for further information, if needed.

Static Electricity Discharge may permanently damage your system. Discharge any static electricity build up in your body by touching your computer case for a few seconds. Avoid any contact with internal parts and handle cards only by their external edges.

1. Turn OFF the power to your computer.
2. Unplug the power cord, remove the computer cover.
3. Remove the slot bracket from an available PCI Express slot.
4. Carefully align the card to the selected PCI Express slot, push the board down until it is well seated.
5. Replace the slot bracket holding screw to secure the card, then replace the computer cover and reconnect the power cord.

Windows Driver Installation

Windows 10 / 8.x / 7 (32-/64-bit) / Server 2008 R2 / Server 2012 / Server 2012 R2

1. Install the board and boot up Windows.
2. Insert the driver CD. Close the CD autoplay box if prompted.
3. Click **Windows** key and **R**.

For Windows 10: Type **D:\Windows\Win 10\setup.exe**, click **OK**.

For Windows 8.x / Server 2012 / Server 2012 R2:
Type **D:\Windows\Win 8_8.1_Server 2012R2\setup.exe**, click **OK**. (Change **D:** to match your CD\DVD-ROM drive letter)

For Windows 7 / Server 2008 R2: Type **D:\Windows\Win 7_Server 2008R2\setup.exe**, click **OK**. (Change **D:** to match your CD\DVDROM drive letter)

4. At the **User Account Control**, click **Yes**. For Server 2008 R2, 2012 and 2012 R2 skip this step.
5. At **Welcome**, click **Next**.
6. At **Ready to install the program**, click **Install**. For Server 2008 R2, skip this step.
7. Please wait while the driver install process continues.
8. Click **Finish** to complete the installation.

Windows Vista (32-/64-bit) / Server 2008 (32-/64-bit)

1. Install the board and boot up Windows.
2. Insert the driver CD. Close the CD autoplay box if prompted.
3. Click **Start, Run**, type **D:\Windows\Vista_Server 2008\setup.exe**, then click **OK**. Or at the Start search box, type **D:\Windows\Vista_Server 2008\setup.exe**, then press **Enter**. (Change **D:** to match your CD\DVD- ROM drive letter)
4. At the **User Account Control**, click **Continue**. For Server 2008, skip this step.
5. Click **Next**.
6. Click **Install**. Skip this step if not prompted.
7. Please wait while the driver install process continues.
8. Click **Finish** to complete the installation.

Windows XP (32-/64-bit) / Server 2003 (32-/64-bit) / 2000

1. Install the board and boot up Windows.

2. Insert the driver CD.
3. Click **Start**, **Run**, type **D:\Windows\Win2K_XP_2003\setup.exe**, click **OK**. (Change **D:** to match your CD\DVD- ROM drive letter)
4. At **Welcome**, click **Next**, then click **Install**.
5. Click **Finish** to complete the installation.

To Verify Windows Installation


1. Go to Device Manager to verify installation.
For Windows 10 / 8.x / 7 / XP / Server 2003 & 2008R2 / 2000: Right click **This PC**, **Computer** or **My computer**, click **Manage**, then click **Device Manager**.
For Windows Vista: Right click **Computer**, click **Manage**, click **Continue**, then click **Device Manager**.
For Windows Server 2008: Right click **Computer**, click **Manage**, double click **Diagnostics**, then click **Device Manager**.
For Windows Server 2012 and 2012 R2: Right click **Computer** or **This PC**, click **Properties**, then click **Device Manager**
2. Double click **Network adapters**, either **Realtek PCIe GBE Family Controller** or **Realtek RTL... PCI-E Family Gigabit Ethernet...** should be displayed.

Mac OS Installation

1. Install the board and boot up the computer.
2. Insert the driver CD. Double click the **MAC OS X** folder, then double click **10.5.x**, **10.6.x** or **10.7.x** folder. **Note:** use the 10.7.x folder for 10.8 and 10.9.
3. Double click **RTGNICv2.0.6.mpkg**.
4. At **Introduction**, click **Continue**.
5. At **Read Me**, click **Continue**.

6. At **License**, click **Continue**, then click **Agree**.
7. At **Installation Type**, click **Change Install Location** if you want to change the default saving folder; otherwise, click **Install**.
8. Type in **Name** and **Password**, click **OK** or **Install Software**, then click **Continue Installation**.
9. At **Summary**, click **Restart** to restart the computer.

To Verify Mac OS Installation

1. Go to , **System Preference**, then click **Network**.
2. At **New Interface Detected**, click **OK**. Skip this step if not prompted.
3. If the driver is successfully installed, the bullet before **PCI Ethernet...** should be green, see **Figure 2**.

Green bullet stands for successful driver installation.

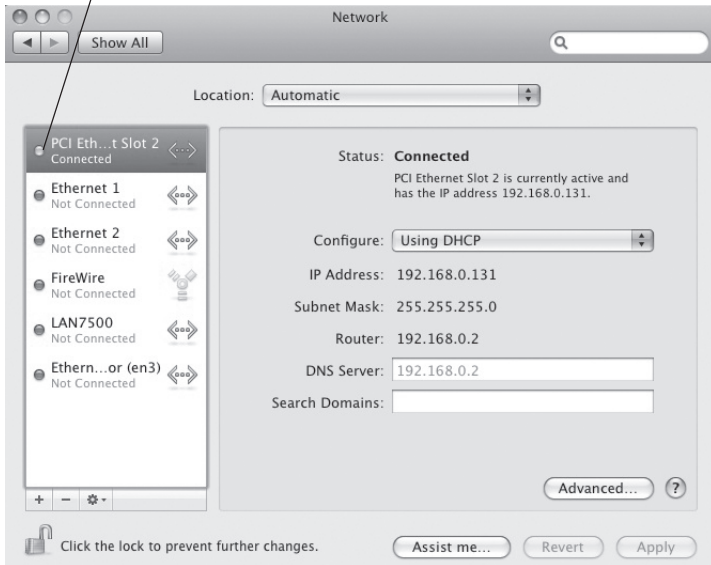


Figure 2

Technical Support and Warranty

QUESTIONS? SIIG's **Online Support** has answers! Simply visit our web site at www.siig.com and click **Support**. Our online support database is updated daily with new drivers and solutions. Answers to your questions could be just a few clicks away. You can also submit questions online and a technical support analyst will promptly respond.

SIIG offers a 5-year manufacturer warranty with this product. This warranty covers the original purchaser and guarantees the product to be free of any defects in materials or workmanship for five (5) years from the date of purchase of the product. This warranty is not transferable and is available only to the original purchaser of the product.

SIIG will, at our discretion, repair or replace (with an identical product or product having similar features and functionality) the product if defective in materials or workmanship. This warranty gives you specific legal rights, and you may also have other rights which vary from state to state. Please see our web site for more warranty details.

If you encounter any problems with this product, please follow the procedures below.

- A) If it is within the store's return policy period, please return the product to the store where you purchased it.
- B) If your purchase has passed the store's return policy period, please follow these steps to have the product repaired or replaced.

Step 1: Submit your RMA request. Go to www.siig.com, click **Support**, then **Request A Product Replacement** to submit a request to [SIIG RMA](#) or fax a request to 510-657-5962. Your RMA request will be processed, if the product is determined to be defective, an RMA number will be issued.

Step 2: After obtaining an RMA number, ship the product.

- Properly pack the product for shipping. All software, cable(s) and any other accessories that came with the original package must be included
- Include a copy of your original sales receipt inside the package with date of purchase and place of purchase circled and clearly visible
- Clearly write your RMA number on the top of the returned package. SIIG will refuse to accept any shipping package, and will not be responsible for a product returned without an RMA number posted on the outside of the shipping carton
- You are responsible for the cost of shipping to SIIG. Ship the product to the following address:

SIIG, Inc.
6078 Stewart Avenue
Fremont, CA 94538-3152, USA
RMA #: _____

- SIIG will ship the repaired or replaced product via Ground in the U.S. and International Economy outside of the U.S. at no cost to the customer

About SIIG, Inc.

Founded in 1985, SIIG, Inc. is a leading manufacturer of IT connectivity solutions (including Serial ATA and Ultra ATA Controllers, FireWire, USB, and legacy I/O adapters) that bridge the connection between Desktop/ Notebook systems and external peripherals. SIIG continues to grow by adding A/V and Digital Signage connectivity solutions to our extensive portfolio. All centered around the distribution and switching of A/V signals over CAT5/6, these products include matrix switches, distribution amplifiers, extenders, converters, splitters, cabling, and more.

SIIG is the premier one-stop source of upgrades and is committed to providing high quality products while keeping economical and competitive prices. High-quality control standards are evident by one of the lowest defective return rates in the industry. Our products offer comprehensive user manuals, user-friendly features, and are backed by an extensive manufacturer warranty.

SIIG products can be found in many computer retail stores, mail order catalogs, and e-commerce sites in the Americas, as well as through major distributors, system integrators, VARs and e-commerce sites.

PRODUCT NAME

DP Gigabit Ethernet PCIe

FCC RULES: TESTED TO COMPLY WITH FCC PART 15, CLASS B OPERATING ENVIRONMENT: FOR HOME OR OFFICE USE

FCC COMPLIANCE STATEMENT:

This device complies with part 15 of the FCC Rules. Operation is subject to the following two conditions: (1) This device may not cause harmful interference, and (2) this device must accept any interference received, including interference that may cause undesired operation.

THE PARTY RESPONSIBLE FOR PRODUCT COMPLIANCE

SIIG, Inc.

6078 Stewart Avenue

Fremont, CA 94538-3152, USA

Phone: 510-657-8688

DP Gigabit Ethernet PCIe is a trademark of SIIG, Inc. SIIG and the SIIG logo are registered trademarks of SIIG, Inc. Microsoft and Windows are registered trademarks of Microsoft Corporation. All other names used in this publication are for identification only and may be trademarks of their respective owners.