



USB 2.0 to VGA Installation Guide

Introduction

The *USB 2.0 to VGA* allows you to connect an additional display to your desktop or notebook PC and use it as an extended desktop or as an additional larger / different display for your main screen.

Features and Benefits

- Compliant with USB specification, Rev.2.0
- Supports suspend and wake-up modes
- Functionality: primary, extended and mirror
- Resolution: up to 1680 x1050 @ 32-bit color

Lot Number Sticker

For future product return or exchange, this lot number is required. Please keep it for your reference.

--	--

Lot Number

Part Number



System Requirements

- Pentium® 4 1.5GHz or equivalent PC
- An available USB 2.0 port
- Windows® 10 (32-/64-bit) / 8.x (32-/64-bit) / 7 (32-/64-bit) / Vista (32-/64-bit) / XP (32-/64-bit) / Server 2003 & 2008 (32-/64-bit) / Server 2008 R2

Package Contents

- *USB 2.0 to VGA*
- Driver CD
- Installation guide

Layout

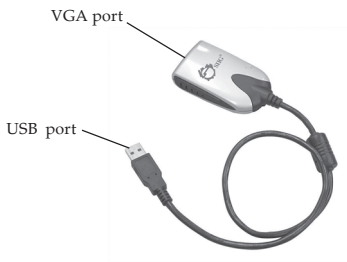


Figure 1: USB 2.0 to VGA

Installation

Make sure the proper version driver for your graphics card is installed, the *USB 2.0 to VGA* is not designed to work with Windows' *Standard VGA Graphics Adapter* driver.

Note: DO NOT plug the *USB 2.0 to VGA* adapter into your computer's USB port until you are instructed to do so. The driver installation will fail when the adapter is plugged in prematurely.

1. Insert the driver CD, close the CD autoplay box if prompted.
2. Enter **This PC, Computer** or **My Computer**, and browse the CD/DVD.
3. Run **Setup.exe**, and choose **Yes** at User Account Control window if prompted.
4. Follow the on-screen steps to install the driver.
5. After installation process ends, select **Yes, I want to restart my computer now**, then click **Finish**.

6. While Windows is restarting, connect your second monitor to the *USB 2.0 to VGA* and turn it on.
7. When Windows resumes, plug the *USB 2.0 to VGA* into the computer, and it's ready for use.

To Verify Installation

1. From the desktop, right click **This PC**, **Computer** or **My Computer**, then click **Manage**.


For Windows 10 / 8 / 7 / XP / 2003: Click **Device Manager**.


For Windows Vista: Click **Continue**, then click **Device Manager**.

For Windows Server 2008 / 2008 R2: Double click **Diagnostics**, then click **Device Manager**.

2. Double click **Trigger USB Graphic Family**, and **USB Display Device (T1N)** should be displayed.

Display Utility

After successful driver installation, the icon  will appear in the taskbar by the system clock. This utility allows you to change the viewing modes, screen resolution, screen rotation, and physical arrangement of your monitors.

Access the utility by right clicking the icon. Note that the utility icon may be hidden in the Windows System Tray. Click  (arrow icon) to bring up more icons.

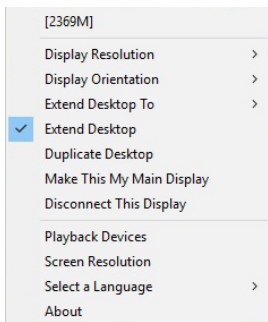


Figure 2: Utility Settings

Description of the Utility Settings

- **Display Resolution:** Click to select an available resolution
- **Display Orientation:** Rotates the screen according to the desired orientation including Landscape, Portrait (Flipped), Landscape (Flipped) and Portrait
- **Extend Desktop To:** Extends the screen according to the desired orientation (Right/Left/Top/Bottom)
- **Extend Desktop:** Extends your desktop for easy viewing of multiple windows. To match the physical arrangement of your displays, go to **Extend Desktop To** for further settings
- **Duplicate Desktop:** Displays the same image on both monitors (Mirror mode)
- **Make This My Main Display:** Sets the connected display of the *USB 2.0 to VGA* as the main display
- **Disconnect This Display:** Disables the connected display of the *USB 2.0 to VGA*
- **Playback Devices:** Enables the Windows audio configuration page, see Figure 3

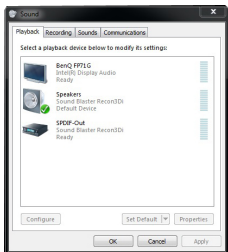


Figure 3

- **Screen Resolution:** Choose from advanced options such as display resolution, display orientation and multiple display modes (Mirror / Extend / Primary), see Figure 4

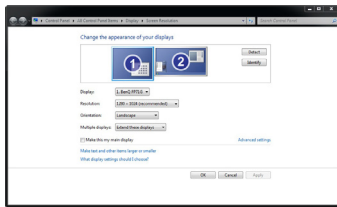


Figure 4

- **Select a Language:** Choose the preferred language from the list
- **About:** Shows the version of the software

Frequently Asked Questions

Q1: Why won't my DVD video play when I move it over to the extended display?

A1: Some DVD playback software packages do not support playing on a secondary display adapter. This is a limitation of the DVD playback software.

Q2: There are lines running up and down my screen or the screen is distorted

A2: This is due to a low or unsupported refresh rate. Make sure you select the *USB 2.0 to VGA* and not set the refresh rate higher than what your monitor can support.

Q3: How do I move a Window to the extended display?

A3: When a window is Maximized it can not be moved to the extended display. Click on the **Restore Down** button located in the upper right hand corner of the window to the left of the Close button. To move the window, place the mouse cursor over the title bar, hold down the left mouse button and drag the window to the other screen.

Blank page

Blank page

Technical Support and Warranty

QUESTIONS? SIIG's **Online Support** has answers! Simply visit our web site at www.siig.com and click **Support**. Our online support database is updated daily with new drivers and solutions. Answers to your questions could be just a few clicks away. You can also submit questions online and a technical support analyst will promptly respond.

SIIG offers a 5-year manufacturer warranty with this product. This warranty covers the original purchaser and guarantees the product to be free of any defects in materials or workmanship for five (5) years from the date of purchase of the product. This warranty is not transferable and is available only to the original purchaser of the product.

SIIG will, at our discretion, repair or replace (with an identical product or product having similar features and functionality) the product if defective in materials or workmanship. This warranty gives you specific legal rights, and you may also have other rights which vary from state to state. Please see our web site for more warranty details.

If you encounter any problems with this product, please follow the procedures below.

A) If it is within the store's return policy period, please return the product to the store where you purchased from.

B) If your purchase has passed the store's return policy period, please follow the steps below to have the product repaired or replaced.

Step 1: Submit your RMA request.

Go to www.siig.com, click **Support**, then **REQUEST A PRODUCT REPLACEMENT** to submit a request to [SIIG RMA](#) or fax a request to 510-657-5962. Your RMA request will be processed, if the product is determined to be defective, an RMA number will be issued.

Step 2: After obtaining an RMA number, ship the product.

- Properly pack the product for shipping. All accessories that came with the original package must be included
- Include a copy of your original sales receipt inside the package with date of purchase and place of purchase circled and clearly visible
- Clearly write your RMA number on the top of the returned package. SIIG will refuse to accept any shipping package, and will not be responsible for a product returned without an RMA number posted on the outside of the shipping carton
- You are responsible for the cost of shipping to SIIG. Ship the product to the following address:

SIIG, Inc.
6078 Stewart Avenue
Fremont, CA 94538-3152, USA
RMA #: _____

- SIIG will ship the repaired or replaced product via Ground in the U.S. and International Economy outside of the U.S. at no cost to the customer

About SIIG, Inc.

Founded in 1985, SIIG, Inc. is a leading manufacturer of IT connectivity solutions (including Serial ATA and Ultra ATA Controllers, FireWire, USB, and legacy I/O adapters) that bridge the connection between Desktop / Notebook systems and external peripherals. SIIG continues to grow by adding A/V and Digital Signage connectivity solutions to our extensive portfolio.

SIIG products offer comprehensive user manuals, many user-friendly features, and are backed by an extensive manufacturer warranty. High quality control standards are evident by the overall ease of installation and compatibility of our products, as well as one of the lowest defective return rates in the industry. SIIG products can be found in computer retail stores, mail order catalogs, through major distributors, system integrators, VARs and through e-commerce sites.

PRODUCT NAME

USB 2.0 to VGA

FCC RULES: TESTED TO COMPLY WITH FCC PART 15, CLASS B
OPERATING ENVIRONMENT: FOR HOME OR OFFICE USE

FCC COMPLIANCE STATEMENT:

This device complies with part 15 of the FCC Rules. Operation is subject to the following two conditions: (1) This device may not cause harmful interference, and (2) this device must accept any interference received, including interference that may cause undesired operation.

THE PARTY RESPONSIBLE FOR PRODUCT COMPLIANCE

SIIG, Inc.

6078 Stewart Avenue

Fremont, CA 94538-3152, USA

Phone: 510-657-8688

USB 2.0 to VGA is a trademark of SIIG, Inc. SIIG and the SIIG logo are registered trademarks of SIIG, Inc. All other names used in this publication are for identification only and may be trademarks of their respective owners.