



# Wireless-N Mini USB Wi-Fi Adapter Installation Guide

---

## Features and Benefits

---

- MIMO technology improves data throughput and range
- Supports 2.4GHz WLAN networks and complies with IEEE 802.11n/g/b
- Operating distance: up to 300ft indoor and 900ft open space
- Supports WLAN security with WPA, WEP (128/64) and WPS

## Lot Number Sticker

For product return or exchange, this number is required. Keep it for your reference.

--

Lot Number

Part Number

## Package Contents

- *Wireless-N Mini USB Wi-Fi Adapter*
- Driver CD
- Installation guide

## System Requirements

- Laptop or desktop computer with an available USB port
- Windows® 10 (32-/64-bit) / 8 (32-/64-bit) / 7(32-/64-bit) / Vista (32-/64-bit) / XP(32-/64-bit) / Server 2003 & 2008 (32-/64-bit) / 2008 R2 / Server 2012 (32-/64-bit) / Server 2016
- Mac OS® X 10.4 to 10.8.x

## Layout



**Figure 1: Layout**

## Windows Driver Installation

---

1. Plug in the *Wireless-N Mini USB Wi-Fi Adapter* to your computer.
2. Click **Close** at the Found New Hardware. Skip this step if not prompted.
3. Insert the driver CD, click **Windows** key and **R**, type **D:\windows\setup.exe**, then click **OK**. (Change D:\ to match your CD-/DVD-ROM drive letter.)
4. Follow the on-screen instructions to complete the installation.

## Windows Wireless LAN Service Installation

---

For Server 2008 and 2008 R2 only, please enable the *Wireless LAN Service* feature after installing the driver. For other Windows OSes, go directly to the **REALTEK USB Wireless LAN Utility** section.

1. At the **Server Manager, Features**, click **Add Features**.
2. Check the **Wireless LAN Service** box, click **Next**, then click **Install**.
3. After installation is done, click **Close**.

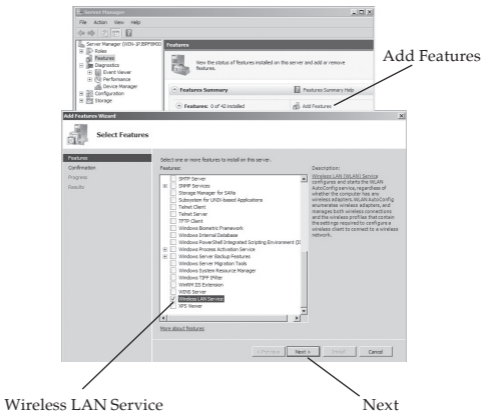


Figure 2

## Mac OS Driver Installation

**Important:** Do not connect the *Wireless-N Mini USB Wi-Fi Adapter* to the computer until instructed to do so.

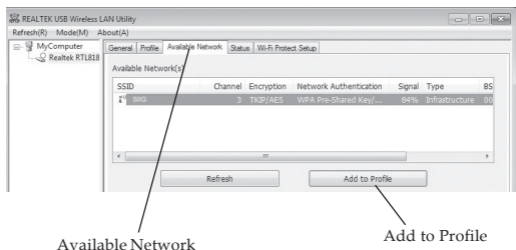
1. Insert the driver CD, double click **Driver CD** icon on the Desktop, then double click **Mac** folder.
2. Double click **10.x** folder, then double click **Installer.pkg** or **Installer.mpkg**

3. Follow the on-screen instructions to complete the installation.
4. Restart your computer, then plug the *Wireless-N Mini USB Wi-Fi Adapter* to your computer.

## **Realtek USB Wireless LAN Utility**

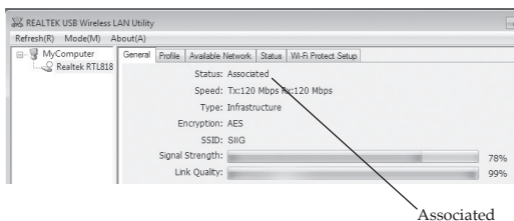
The windows below are taken from Windows OS. For Mac OS, the images will be slightly different.

1. Double click the utility icon to initiate the program.
2. Select the **Available Network** tab, select your preferred network, then click **Add to Profile** or **Connect**.



**Figure 3**

3. At the prompted **Wireless Network Properties**, type in the **Network key**, then click **OK**.
4. Once the network is connected, the network status will show **Associated** or **Connected**.



**Figure 4**

## **Wi-Fi Protected Setup (WPS)**

---

WPS is an easy way to setup a secure wireless network with each Windows OS. A WPS compatible wireless access point (AP) is required. Insert the PIN code to set up.

## Pin Input

1. Launch the REALTEK USB Wireless LAN Utility and select the "**Wi-Fi Protect Setup**" tab.

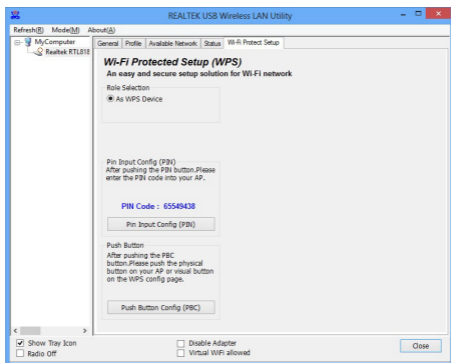


Figure 5

2. Make sure the driver has installed and the adapter is connected. Click **Push Button Config (PBC)** on the screen to initialize the connection.

3. Push the **Pin Input Config (PIN)** button, then enter the PIN code into your AP's WPS configuration section.
4. When the devices are communicating, **WPS Protocol Communication** will be displayed.

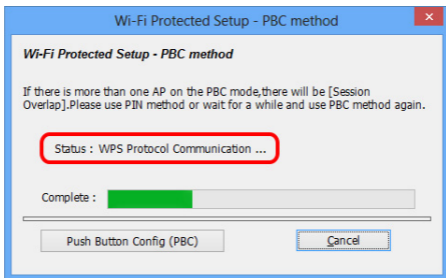


Figure 6

5. See **Figure 4** on page 6 to verify the connection status as **Associated** or **Connected**.



**Blank Page**

**Blank Page**

# Technical Support and Warranty

---

**QUESTIONS?** SIIG's **Online Support** has answers! Simply visit our web site at [www.siig.com](http://www.siig.com) and click **Support**. Our online support database is updated daily with new drivers and solutions. Answers to your questions could be just a few clicks away. You can also submit questions online and a technical support analyst will promptly respond.

SIIG offers a 2-year manufacturer warranty with this product. This warranty covers the original purchaser and guarantees the product to be free of any defects in materials or workmanship for two (2) years from the date of purchase of the product. This warranty is not transferable and is available only to the original purchaser of the product.

SIIG will, at our discretion, repair or replace (with an identical product or product having similar features and functionality) the product if defective in materials or workmanship. This warranty gives you specific legal rights, and you may also have other rights which vary from state to state. Please see our web site for more warranty details.

If you encounter any problems with this product, please follow the procedures below.

A) If it is within the store's return policy period, please return the product to the store where you purchased from.

B) If your purchase has passed the store's return policy period, please follow the steps below to have the product repaired or replaced.

**Step 1:** Submit your RMA request.

Go to [www.siig.com](http://www.siig.com), click **Support**, then **REQUEST A PRODUCT REPLACEMENT** to submit a request to [SIIG RMA](#) or fax a request to 510-657-5962. Your RMA request will be processed, if the product is determined to be defective, an RMA number will be issued.

**Step 2:** After obtaining an RMA number, ship the product.

- Properly pack the product for shipping. All accessories that came with the original package must be included
- Include a copy of your original sales receipt inside the package with date of purchase and place of purchase circled and clearly visible
- Clearly write your RMA number on the top of the returned package. SIIG will refuse to accept any shipping package, and will not be responsible for a product returned without an RMA number posted on the outside of the shipping carton
- You are responsible for the cost of shipping to SIIG. Ship the product to the following address:

**SIIG, Inc.**  
**6078 Stewart Avenue**  
**Fremont, CA 94538-3152, USA**  
**RMA #:** \_\_\_\_\_

- SIIG will ship the repaired or replaced product via Ground in the U.S. and International Economy outside of the U.S. at no cost to the customer

## About SIIG, Inc.

---

Founded in 1985, SIIG, Inc. is a leading manufacturer of IT connectivity solutions (including Serial ATA and Ultra ATA Controllers, FireWire, USB, and legacy I/O adapters) that bridge the connection between Desktop/Notebook systems and external peripherals. SIIG continues to grow by adding A/V and Digital Signage connectivity solutions to our extensive portfolio.

SIIG products offer comprehensive user manuals, many user-friendly features, and are backed by an extensive manufacturer warranty. High quality control standards are evident by the overall ease of installation and compatibility of our products, as well as one of the lowest defective return rates in the industry. SIIG products can be found in computer retail stores, mail order catalogs, through major distributors, system integrators, VARs and through e-commerce sites.

### **PRODUCT NAME**

Wireless-N USB Wi-Fi Adapter

**FCC RULES: TESTED TO COMPLY WITH FCC PART 15, CLASS B  
OPERATING ENVIRONMENT: FOR HOME OR OFFICE USE**

### **FCC COMPLIANCE STATEMENT:**

This device complies with part 15 of the FCC Rules. Operation is subject to the following two conditions: (1) This device may not cause harmful interference, and (2) this device must accept any interference received, including interference that may cause undesired operation.

### **THE PARTY RESPONSIBLE FOR PRODUCT COMPLIANCE**

SIIG, Inc.

6078 Stewart Avenue

Fremont, CA 94538-3152, USA

Phone: 510-657-8688

Wireless-N USB Wi-Fi Adapter is a trademark of SIIG, Inc. SIIG and the SIIG logo are registered trademarks of SIIG, Inc. All other names used in this publication are for identification only and may be trademarks of their respective owners.