

SIIG[®]

Connectivity Solutions You Can Trust![™]

Ergonomic Multi-Angle Tilted

Laptop Cooling Pad



Introduction

The Ergonomic Multi-Angle Tilted Laptop Cooling Pad supports tri-level height adjustment allowing for ergonomic positioning for a comfortable reading and typing experience. Air mesh cushion base provides added support and comfort while on your lap.

Specifications

- **Laptop size:** Up to 17"
- **Fan size:** 80mm
- **Rated voltage:** 5V DC
- **Fan speed:** 1700RPM (+/-10%)
- **Noise level:** 20dBA
- **Built-in cable length:** 1.51ft
- **Material:** Plastic
(w/ aluminum face plate and air mesh cushion base)
- **Color:** Black
- **Dimensions:** 15.75" (W) x 1.69" (H) x 11.81" (D)
- **Weight:** 2.20 lbs

Package Contents

- Ergonomic Multi-Angle Tilted Laptop Cooling Pad
- User Reference Guide

Product Layout

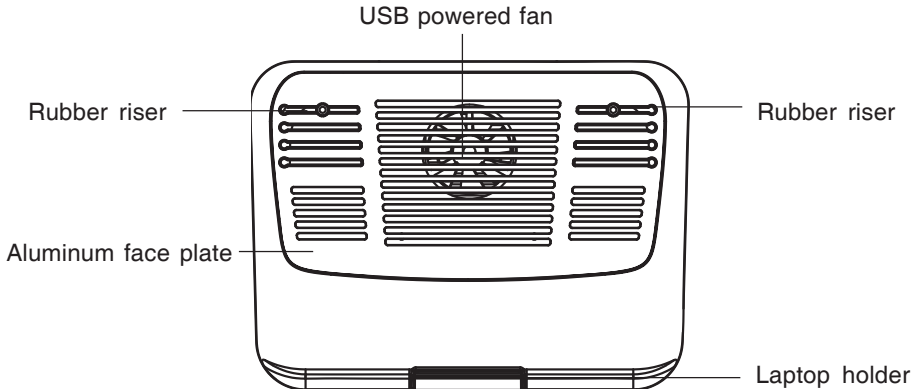


Figure 1: Front side

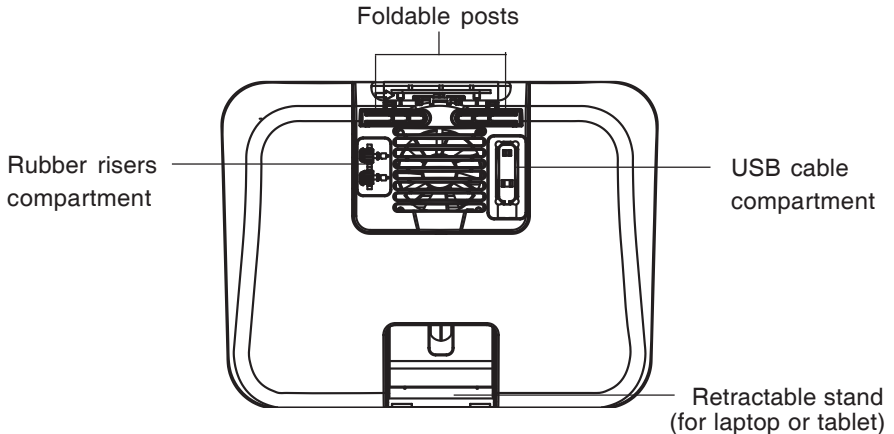


Figure 2: Rear side

User Instructions

* Using on lap

1. Take the **rubber risers** out from the bottom compartment.
2. Slip the **rubber risers** into the track and adjust its position according to the size of your laptop.
3. Connect the cooling fan's **built-in power cable** to a USB port of your laptop for power.
4. Put the laptop with cooling pad on your lap and enjoy.

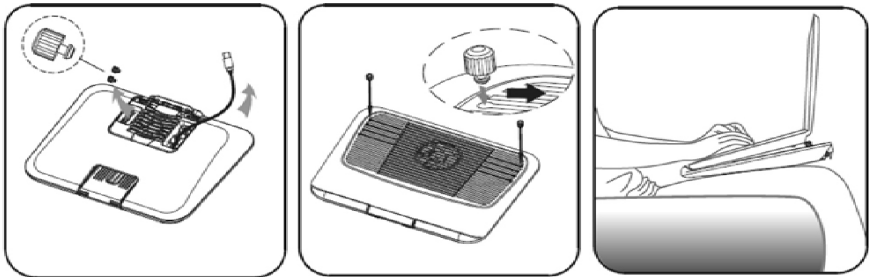


Figure 3

* *Using on desktop*

1. Adjust the height of the cooling pad:
Open the **foldable posts** or pull out the **retractable stand**

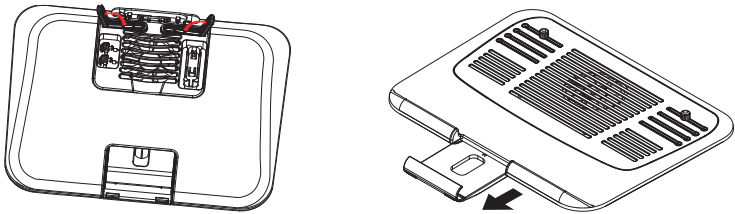


Figure 4

The following steps show how to assemble the **retractable stand** with the cooling pad:

First step: Align with the arrow and slip into the track. Make sure it's joined securely.

Second step: Open the **retractable stand** and insert the position shaft to the trench.

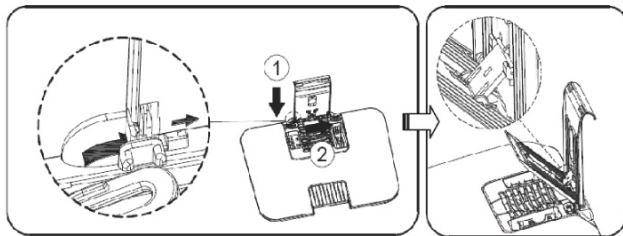


Figure 5

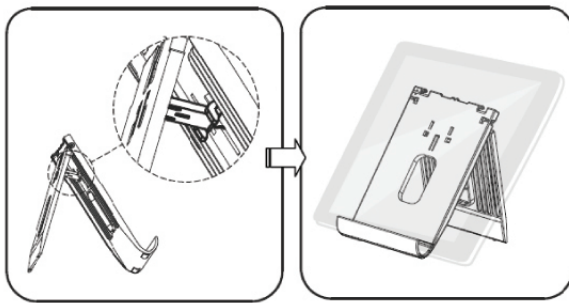
2. Refer to step 1 to 3 on page 4 for details.
3. Put the laptop with cooling pad on the desktop and enjoy ergonomic viewing angles.



Figure 6

* Tablet stand

The **retractable stand** can also be used as a tablet stand to hold your tablet or iPad.



* Open and insert the position shaft to the trench

* Put your tablet or iPad in place

Technical Support and Warranty

QUESTIONS? SIIG's **Online Support** has answers! Simply visit our web site at www.sii.com and click **Support**. Our online support database is updated daily with new drivers and solutions. Answers to your questions could be just a few clicks away. You can also submit questions online and a technical support analyst will promptly respond.

SIIG offers a 2-year manufacturer warranty with this product. This warranty covers the original purchaser and guarantees the product to be free of any defects in materials or workmanship for two (2) years from the date of purchase of the product. This warranty is not transferable and is available only to the original purchaser of the product.

SIIG will, at our discretion, repair or replace (with an identical product or product having similar features and functionality) the product if defective in materials or workmanship. This warranty gives you specific legal rights, and you may also have other rights which vary from state to state. Please see our web site for more warranty details.

If you encounter any problems with this product, please follow the procedures below.

- A) If it is within the store's return policy period, please return the product to the store where you purchased it.
- B) If your purchase has passed the store's return policy period, please follow these steps to have the product repaired or replaced.

Step 1: Submit your RMA request.

Step 2: After obtaining an RMA number, ship the product.

- You are responsible for the cost of shipping to SIIG. Ship the product to the following address:
SIIG, Inc.
6078 Stewart Avenue
Fremont, CA 94538-3152, USA
RMA #: _____
- SIIG will ship the repaired or replaced product via Ground in the U.S. and International Economy outside of the U.S. at no cost to the customer

