



HDMI 2.0 to DisplayPort 1.2 Converter - 4Kx2K 60Hz User Reference Guide



P/N: CE-H22Z11-S1

Introduction

The HDMI 2.0 to DisplayPort 1.2 Converter easily connects your HDMI source device to a DP monitor.

Key Features and Benefits

- Supports high resolutions up to 3840x2160@60Hz (4:4:4 8bit) and stereo or coaxial audio (up to 7.1ch) output
- Compliant with DisplayPort 1.2a, HDMI 2.0a and HDCP 2.2
- Built-in EDID management switches allow for expanded compatibility with different monitors
- Sturdy metal housing extends durability and improves heat dissipation

Specifications

Video Bandwidth (Input)	Single-link 600MHz (6.0Gbps)
Video Support	Up to 4Kx2K @60Hz (4:4:4 8bit)
Audio Support	Audio extraction only
HDMI Audio Format	PCM2/5.1/7.1, Dolby 5.1/7.1, DTS 5.1/7.1
Connectors	1x 19-Pin, HDMI, Type A, Female, Input 1x 20-pin, DisplayPort, Female, Output 1x Coaxial, Output 1x 3.5mm Audio Jack, Output
Housing Material	Metal
Power Adapter	Input: AC 100-240V / 50~60Hz Output: DC 5V / 2A

Package Contents

- HDMI 2.0 to DisplayPort 1.2 Converter - 4Kx2K 60Hz
- Power Adapter
- Mounting Kit
- User Reference Guide

Layout

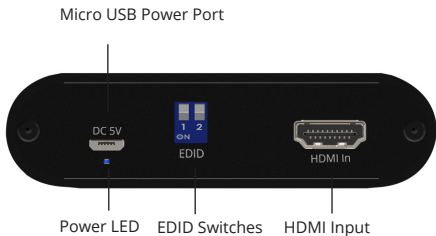


Figure 1: Front side

- **Micro USB Power Port:** Connects to the included power adapter
* **Note:** Also used for firmware update. Connect it to the computer by Micro USB cable (cable not included) as needed
- **Power LED:** On when the unit is powered on

- **EDID Switches:** Refer to the table to configure EDID on Page 5
- **HDMI Input:** Connects to HDMI source device by HDMI cable (cable not included)

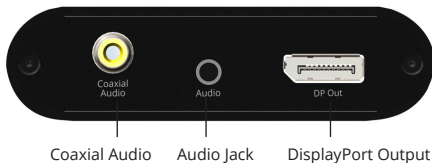


Figure 2: Rear side

- **Coaxial Audio:** Up to 7.1ch surround output - connects to audio output device by coaxial cable (cable not included)
- **Audio Jack:** Stereo output - connects to audio output device by 3.5mm audio cable (cable not included)
- **DisplayPort Output:** Connects to a DisplayPort monitor/display by DisplayPort cable (cable not included)
 - * **Note:** DisplayPort output has no audio stream

EDID Setting

There are 4 settings.

- "1": The button on the upper position

- "0": The button on the lower position

Switch Position		Description
Pin 1	Pin 2	
1	1	3840x2160 60Hz (Default EDID)
0	1	4096x2160 60Hz
1	0	3840x2160 30Hz
0	0	1080p 60Hz

Application

The *HDMI 2.0 to DisplayPort 1.2 Converter* allows you to connect your HDMI source device to a DP monitor instantly and supports high resolutions up to 4Kx2K.

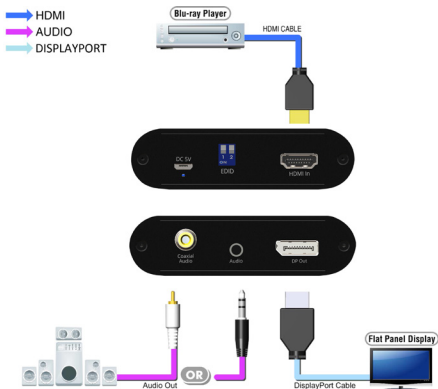


Figure 3

*** Note:**

1. DisplayPort output has no audio stream.
2. For audio output, connect to 3.5mm audio jack (stereo) or coaxial port (up to 7.1 ch) depending on your needs.

Technical Support and Warranty

QUESTIONS? SIIG's **Online Support** has answers! Simply visit our web site at *www.siig.com* and click **Support**. Our online support database is updated daily with new drivers and solutions. Answers to your questions could be just a few clicks away. You can also submit questions online and a technical support analyst will promptly respond.

SIIG offers a 3-year manufacturer warranty with this product. This warranty covers the original purchaser and guarantees the product to be free of any defects in materials or workmanship for three (3) years from the date of purchase of the product. This warranty is not transferable and is available only to the original purchaser of the product.

SIIG will, at our discretion, repair or replace (with an identical product or product having similar features and functionality) the product if defective in materials or workmanship. This warranty gives you specific legal rights, and you may also have other rights which vary from state to state. Please see our web site for more warranty details.

If you encounter any problems with this product, please follow the procedures below.

- A) If it is within the store's return policy period, please return the product to the store where you purchased from.
- B) If your purchase has passed the store's return policy period, please follow the steps below to have the product repaired or replaced.

Step 1: Submit your RMA request.

Go to **www.siig.com**, click **Support**, then **REQUEST A PRODUCT REPLACEMENT** to submit a request to **SIIG RMA** or fax a request to 510-657-5962. Your RMA request will be processed, if the product is determined to be defective, an RMA number will be issued.

Step 2: After obtaining an RMA number, ship the product.

- Properly pack the product for shipping. All accessories that came with the original package must be included
- Include a copy of your original sales receipt inside the package with date of purchase and place of purchase circled and clearly visible
- Clearly write your RMA number on the top of the returned package. SIIG will refuse to accept any shipping package, and will not be responsible for a product returned without an RMA number posted on the outside of the shipping carton
- You are responsible for the cost of shipping to SIIG. Ship the product to the following address:

SIIG, Inc.
6078 Stewart Avenue
Fremont, CA 94538-3152, USA
RMA #: _____

- SIIG will ship the repaired or replaced product via Ground in the U.S. and International Economy outside of the U.S. at no cost to the customer

About SIIG, Inc.

Founded in 1985, SIIG, Inc. is a leading manufacturer of IT connectivity solutions (including Serial ATA and Ultra ATA Controllers, FireWire, USB, and legacy I/O adapters) that bridge the connection between Desktop/ Notebook systems and external peripherals. SIIG continues to grow by adding A/V and Digital Signage connectivity solutions to our extensive portfolio.

SIIG products offer comprehensive user manuals, many user-friendly features, and are backed by an extensive manufacturer warranty. High quality control standards are evident by the overall ease of installation and compatibility of our products, as well as one of the lowest defective return rates in the industry. SIIG products can be found in computer retail stores, mail order catalogs, through major distributors, system integrators, VARs and through e-commerce sites.

PRODUCT NAME

HDMI 2.0 to DisplayPort 1.2 Converter - 4Kx2K 60Hz

FCC RULES: TESTED TO COMPLY WITH FCC PART 15, CLASS B
OPERATING ENVIRONMENT: FOR HOME OR OFFICE USE

FCC COMPLIANCE STATEMENT:

This device complies with part 15 of the FCC Rules. Operation is subject to the following two conditions: (1) This device may not cause harmful interference, and (2) this device must accept any interference received, including interference that may cause undesired operation.

THE PARTY RESPONSIBLE FOR PRODUCT COMPLIANCE

SIIG, Inc.
6078 Stewart Avenue
Fremont, CA 94538-3152, USA
Phone: 510-657-8688

HDMI 2.0 to DisplayPort 1.2 Converter - 4Kx2K 60Hz is a trademark of SIIG, Inc. SIIG and the SIIG logo are registered trademarks of SIIG, Inc. All other names used in this publication are for identification only and may be trademarks of their respective owners.

June, 2018

Copyright © 2018 by SIIG, Inc. All rights reserved.