

Dear Valued Customer

(Just WANTED YOU TO KNOW)

**WE REALLY
APPRECIATE
YOUR PURCHASE**

~thank you~

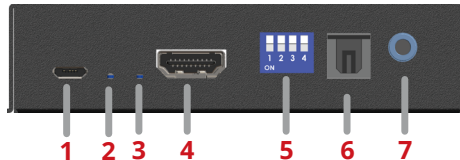
Features

- Support HDMI 2.0, 4K@60 4:4:4 8bits
- Support HDCP 2.2 & 1.4
- Support HDR which is 4K2K@60 4:2:0 10bits
- Video bandwidth 18Gbps
- Support CEC
- Support 5.1 ch audio
- Support audio extraction via stereo & Toslink
- Support audio embedded via stereo & Toslink
- Support ARC audio extraction via Toslink

Package contents

- HDMI 2.0 Audio Extractor/Embedder
- Power adapter DC 5V/2A
- Screw kit
- Quick Start Guide

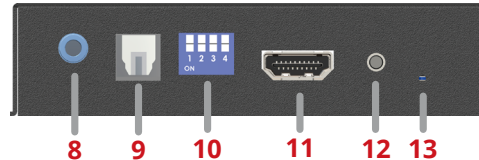
Layout



1. DC 5V micro USB power
2. Power LED indicator
3. Signal LED indicator
4. HDMI input
5. MODE 1 DIP switch
6. S/PDIF input (TOSLINK) (Embed)
7. Stereo input (3.5mm) (Embed)

MODE 1

Position		If setting		
PIN#1	PIN#2	OFF[↑]	OFF[↑]	EDID-TV
		OFF[↑]	ON[↓]	EDID-5.1CH
	PIN#3	ON[↓]	OFF[↑]	EDID-2CH
		ON[↓]	ON[↓]	EDID-LEARN
PIN#4	OFF[↑]	Audio Embedder	Disable	
	ON[↓]		Enable	
PIN#4	OFF[↑]	Audio Embedder	From stereo	
	ON[↓]		From Toslink	

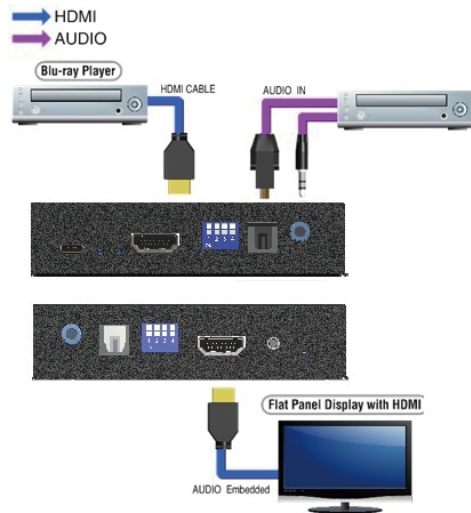


8. Stereo output (3.5mm) (Extract)
9. S/PDIF output (TOSLINK)(Extract or ARC)
10. MODE 2 DIP switch
11. HDMI output
12. Push button: reset device
13. Link LED indicator

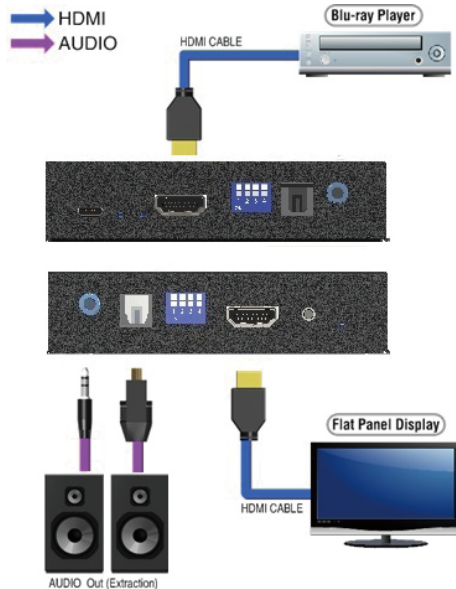
MODE 2

Position	OFF[↑]	ON[↓]
PIN#1	OFF	Audio Extractor
PIN#2	OFF	ARC
PIN#3	Reserved	
PIN#4	Normal	FW

Application (Audio Embedder)



Application (Audio Extractor)

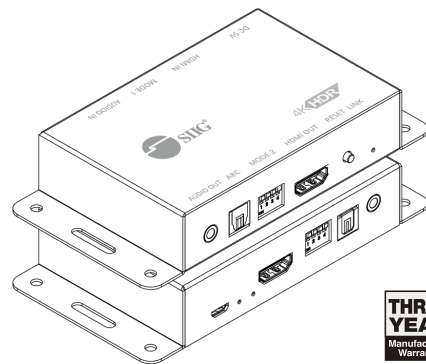


Note:

1. ARC audio extraction is always via Toslink output
2. Once enable ARC function, the audio extraction will be valid only via stereo.



HDMI 2.0 Audio Extractor/Embedder Quick Start Guide



Support

For more info or tech support
<http://www.siig.com/support>