

Dear Valued Customer

(Just WANTED YOU TO KNOW)

**WE REALLY
APPRECIATE
YOUR PURCHASE**

~thank you~

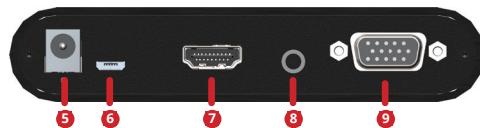
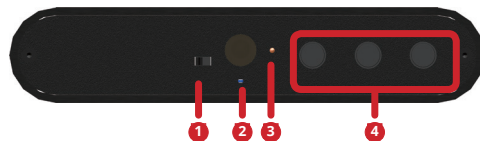
Features

- HDMI version 1.2
- Resolution support: Popular SMPTE and VESA input & output resolutions
- Maximum pixel rate : 165MHz
- Stereo PCM (48KHz only) input supported
- Advanced scaler features: De-interlacing, noise reduction, edge enhancement, frame rate conversion.
- Operation methods: Push buttons (OSD menu), IR remotecontrol, software via micro USB
- USB firmware upgradable for expanding compatibility

Package contents

1. VGA & Audio to HDMI Scaler Converter
2. Power adapter 5V/2A
3. IR Remote control
4. Ear mount & Screw kit
5. Quick start guide

Layout



1. Dip Switch: On [←]: normal mode.
OFF[→]: Firmware upgrade
2. IR sensor: Receiving the IR commands from IR remote
3. LED indicator: [Orange]: power
[Green]: signal and power
4. Push button: [Left]:down button
[Mid]:up button
[Right]:menu/enter button
5. Power jack: Connect to power adapter 5V/2A

6. Micro USB: Firmware update & software control port
7. HDMI OUT: Connect to a HDMI display
8. Stereo Audio IN: connect to analog stereo audio source
9. VGA IN: connect to an VGA source

On-Screen Display Menu

1. Image	Contrast	0~255 of Contrast Level
	Brightness	0~255 of Brightness Level
	Saturation	0~255 of Saturation Level
	Hue	0~255 of Hue Level
	B/W Extension	Off, On
	Color Tone	Off, Skin, Green
2. Adjustment	Edge Enhance	Typ, Mid, Max, Off
	Sharpness	0~127 of Sharpness Level
	Out Resolut	
	Out ColorSpace	
	Over Scanning	
3. System	Aspect Ratio	16:9, 4:3
	In-sync Info	
	Default Pattern	
	Factory Reset	
	F/W Version	

Application

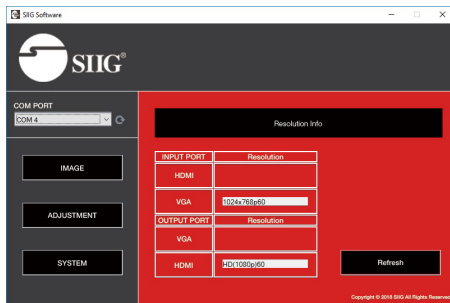


IR Remote Control

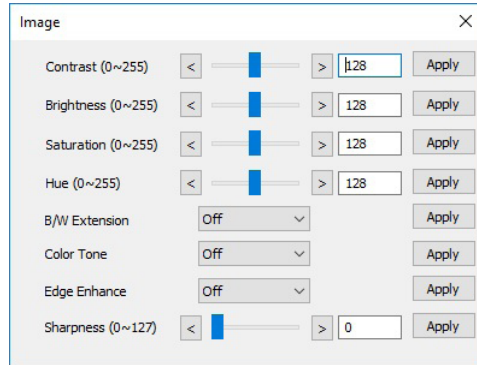
Button	Function
FREEZE	Freeze video
ASPECT RATIO	Aspect ratio change
BLANK	Blank video
EXIT	Exit OSD
ENTER	Enter key
UP	Up key
LEFT	Left key
RIGHT	Right key
DOWN	Down key
MENU	Menu on
INPUT INFO	Source resolution information
1080p60	Select 1080p60 output resolution
1080i60	Select 1080i60 output resolution
720p60	Select 720p60 output resolution
480p60	Select 480p60 output resolution

Software control

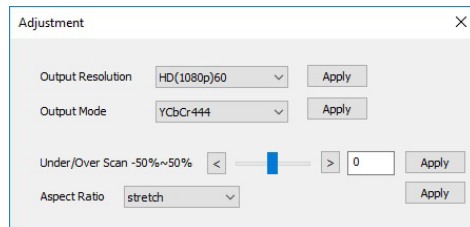
1. Please search this product on SIIG web site and find the download link on "Downloads" page.
2. Connect the device to PC via USB to mini-USB cable
3. Search the right COM port to connect



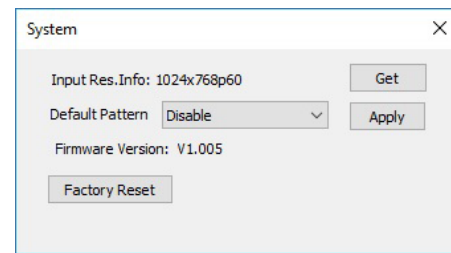
Image



Adjustment



System



Support

For more info or tech support
<http://www.siig.com/support>



VGA & Audio to HDMI Scaler Converter Quick Start Guide

