

Dear Valued Customer

(Just WANTED YOU TO KNOW)

WE REALLY  
APPRECIATE  
YOUR PURCHASE

~thank you~

## Features

- Qi Fast Wireless charger
- Input: 5V/2A, 9V/1.67A
- Output: 5V/1.5A, 9V/1.2A

## Applicable Devices

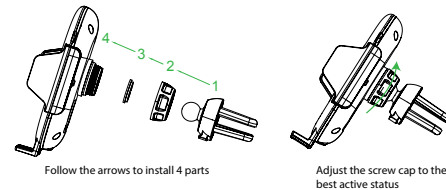
Compatible with most Qi enabled devices. For all other mobiles without Qi standard, these will be working with wireless receivers

## Package contents

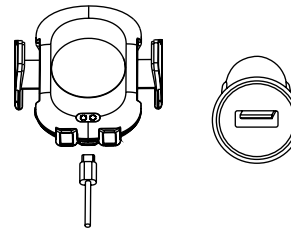
1. Wireless charging car stand
2. Air vents clip
3. Suction cup
4. USB cable TypeA-male to TypeC
5. Quick start guide

## Installation Steps

### 1. How to install air vents

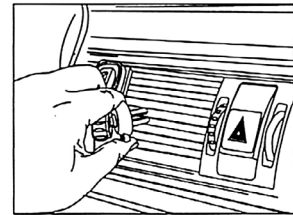


### 2. Input: Connect the wireless charger and car adapter with the charging cord

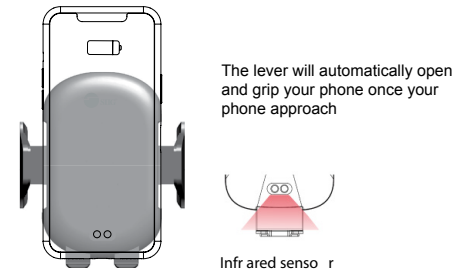


Must use Qualcomm quick charge adapter for fast wireless charging

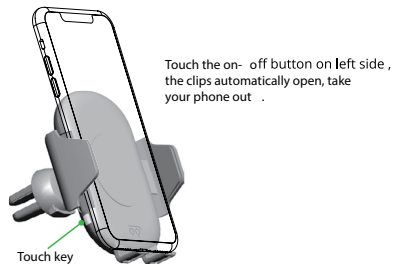
### 3. Press the button of clip to fix, then adjust the angle and tighten the fixed nut



### 4. Place smartphone

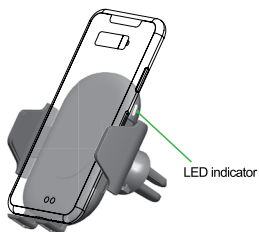


### 5. Take off smartphone



### 6. LED indicator shows the working status

- 1.Blue lights on to show normal charging
- 2.Red lights on to show stand by
- 3.Red light flashes to show not working properly.



When the LED light flashes during the wireless charging, which indicates a charging failure

The following situation can cause failures like the high temperature, slow charging and no charging.

1. The adapter is not up to USB 5V
2. The charging cable is not up to USB standard
3. The phone case is too thick (recommended thickness within 2mm)
4. The phone is not placed at the center of the wireless charger.
5. There is metal/magnet on the back of smartphone or phone case.

### Support

For more info or tech support  
<http://www.siig.com/support>



## Auto-Clamping Wireless Car Charger Mount/Stand

### Quick Start Guide

