

**Dear Valued Customer**

(JUST WANTED YOU TO KNOW)

**WE REALLY  
APPRECIATE  
YOUR PURCHASE**

***~thank you~***

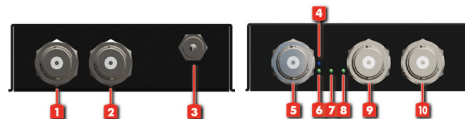
## Features

- 3G/HD/SD triple-rate distribution
- Four separately buffered and reclocked outputs
- Cable equalization (Belden 1694A) and signal retiming
- Dual color LED indication of input lock and rate
- Passes all ancillary data
- Input signal automatic equalization provides transmission distance of 984ft @SD-SDI, 656ft@HD-SDI, and 394ft@3G-SDI
- Support protocols: SMPTE 259M, 292M, 424M and 425M
- Support Data rates 270/1483/1485/2970Mbps

## Package contents

1. 1x4 3G-SDI Distribution Amplifier
2. Power adapter 5V/2A
3. Quick start guide

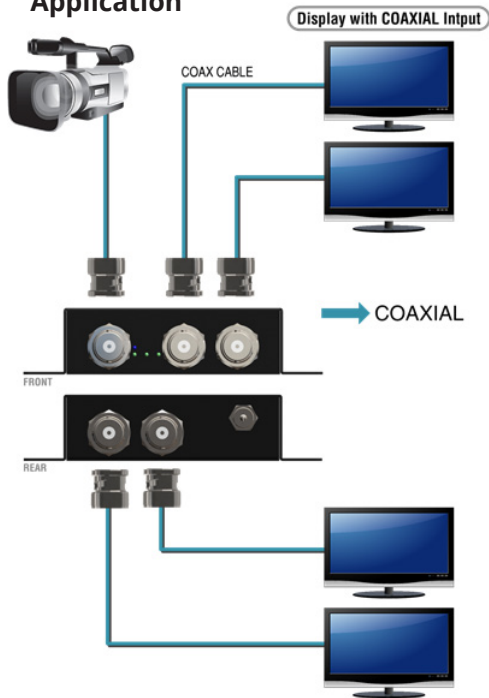
## Layout



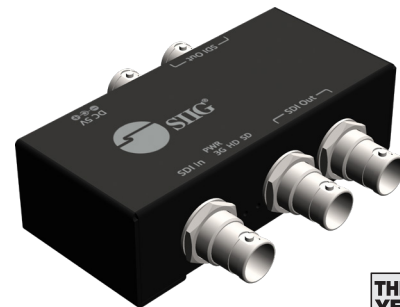
BNC connector: 75Ω inter-locked socket

1	SDI output	3G/HD/SD-SDI Output
2	SDI output	3G/HD/SD-SDI Output
3	Power input	Connect with power adapter 5V/2A
4	Power LED	Turn on when power is on
5	SDI input	3G/HD/SD-SDI input
6	3G signal LED	On when using 3G signal
7	HD signal LED	On when using HD signal
8	SD signal LED	On when using SD signal
9	SDI output	3G/HD/SD-SDI Output
10	SDI output	3G/HD/SD-SDI Output

## Application



## 1x4 3G-SDI Distribution Amplifier Quick Start Guide



### Support

For more info or tech support  
<http://www.siig.com/support>