

Dear Valued Customer

(JUST WANTED YOU TO KNOW)

**WE REALLY
APPRECIATE
YOUR PURCHASE**

~thank you~

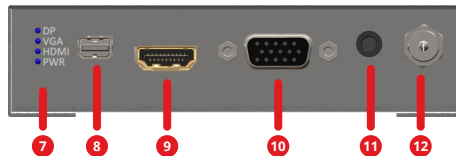
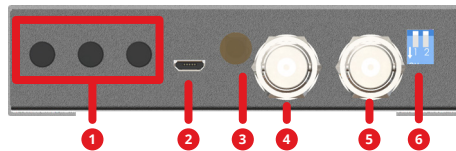
Features

- Supported Input: HDMI/mDP/ VGA
- Input maximum pixel rate: 165MHz
- Output bandwidth: 2.970Gbps
- Support SD-SDI, HD-SDI & 3G-SDI
- Include a SDI loop-out
- Audio output: stereo 2 PCM
- Supports video enhancement features
- Software control via Micro-USB
- Deinterlacing supported
- Video H/V mirror supported
- Over / under scanning adjustable
- Active video area adjustment supported
- USB firmware upgradable

Package contents

1. Multiple Video to SDI Scaler Converter
2. Power adapter 12V/2A
3. IR Remote control
4. Ear mount
5. Quick start guide

Layout



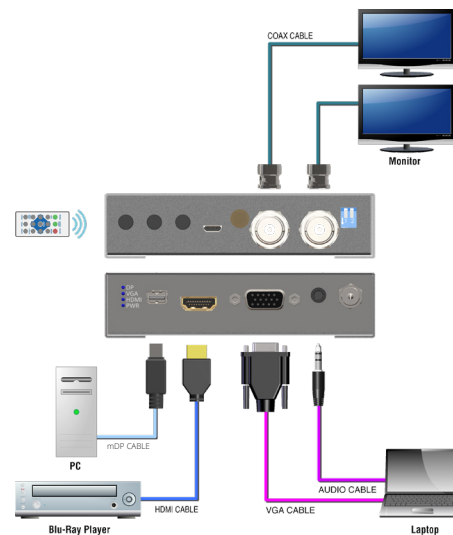
1. Dip Switch: Down, Up, Enter
2. Micro USB: Firmware update and software control port
3. IR ensor: receive the IR commands from IR remote
4. SDI output
5. SDI loopout
6. DIP switch: PIN 1 F/W upgrade on/off
PIN 2 reserved
7. LED indicator: DP, VGA, HDMI, PWR

8. Mini DP input
9. HDMI input
- 10.VGA input:
- 11.Stereoinput: for VGA use
- 12.DC jack: connect to power adapter 12V/2A

IR Remote Control

Button	Function
FREEZE	Freeze video
ASPECT RATIO	Aspect ratio change
BLANK	Blank video
EXIT	Exit OSD
ENTER	Enter key
UP	Up key
LEFT	Left key
RIGHT	Right key
DOWN	Down key
MENU	Menu on
INPUT INFO	Source resolution information
1080p60	Select 1080p60 output resolution
1080i60	Select 1080i60 output resolution
720p60	Select 720p60 output resolution
480p60	Select 480p60 output resolution

Application

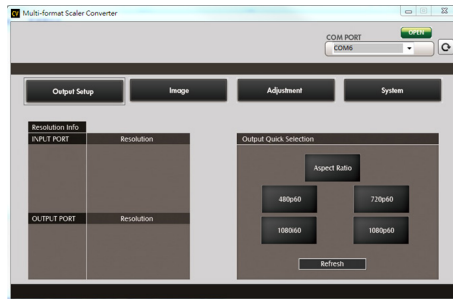


On-Screen Display Menu

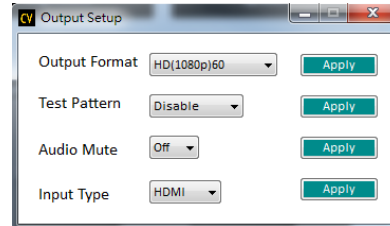
1. Output Setup	Output Format	
	Test Pattern	Disable, White, Cross, Hatch, Color, Gray, Windows, H-Ramp, W-HRamp, W-VRamp Diagonal
	Audio Mute	Off, On
	Input Type	HDMI, VGA, DP
2. Image	Contrast	0~255 of Contrast Level
	Brightness	0~255 of Brightness Level
	Saturation	0~255 of Saturation Level
	Hue	0~255 of Hue Level
	Gamma Adjust	Off, 1.1, 1.3, 0.7, 0.9
	Color Tone	Off, Green, Skin
	Edge Enhance	Off, Max, Mid, Min
	Sharpness	0~64 of Sharpness Level
3. Adjustment	Under/Over Scan	-50%~50% of Scan Level
	Aspect Ratio	Stretch, 16:9, 4:3
	H-Mirror	Off, On
	V-Mirror	Off, On
	H-Shift	-100~100 of H-Shift Level
	V-Shift	-50~50 of V-Shift Level
4. System	Input Format	
	F/W Version	
	Factory Reset	
5. Exit		

Software control

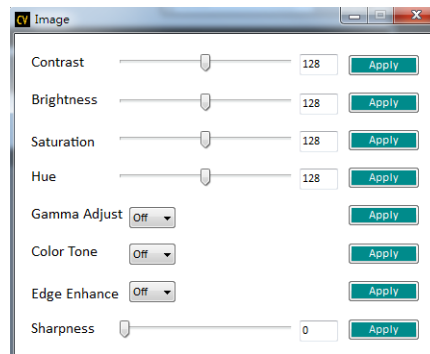
1. Please search this product on SIIG web site and find the download link on "Downloads" page.
2. Connect the device to PC via USB to mini-USB cable
3. Search the right COM port to connect



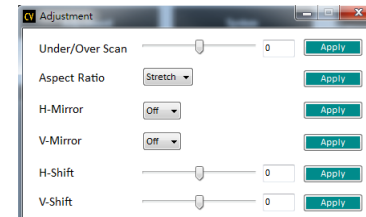
Output Setup Button



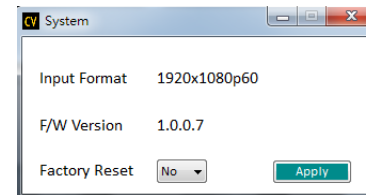
Image



Adjustment



System



Support

For more info or tech support
<http://www.siig.com/support>



Multiple Video to SDI Scaler Converter Quick Start Guide

