

Dear Valued Customer

(JUST WANTED YOU TO KNOW)

**WE REALLY
APPRECIATE
YOUR PURCHASE**

~thank you~

Features

- Automatically Convert File's Format: Transfer between MAC(APFS) and Windows(NTFS) unobstructedly, and resolved the problem of FAT32 can't copy single file more than 4GB
- Super convenient "drag/drop" & "copy/paste" function, transfer data easily bi-direction between MAC & Windows systems
- Share the same keyboard and mouse between two computers and Simply switch the mouse cursor to the computer screen you want to work on
- Conforms to SuperSpeed USB 3.0 (5Gps) transfer rate
- Plug-n-play easy installation: built-in driver with automatic installation.
- Both sides of USB connectors are compatible with both MAC and Windows

System Requirements

- Windows® 10 / 8.1 / 7(SP1) (32/64 bit)
- Mac OS X® 10.14 / 10.13 to 10.10
- USB 3.0 port

Package contents

- Data KM Magic Switch Console Cable
- Quick start guide

Notes

- USB host not supported:
Asmedia, Etron 168/188, Via 801805
- Windows RT not supported.
- Virtual Windows or Mac OS by VMware is not supported.
- User needs to have administrator rights
- If one of the two connected computers restarts, reboots, sleeps or hibernates, please disconnect and reconnect both sides of the cable.

Functions

- Keyboard and Mouse Sharing



Please use a keyboard and mouse set.(The keyboard switch function always applies to the computer the mouse is currently on)

Move the mouse cursor to the second computer and open any editing application such as Word, Excel, Power Point, etc. and use the keyboard of the first computer to type the text on the file of the second computer.

- Clipboard Sharing

With the clipboard sharing feature you can easily copy and paste clipboard content bi-directionally between two computers.



• File Transferring

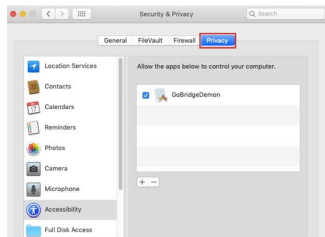
Quickly and easily transfer files between two computers. Simply copy/paste or drag/drop the file or folder to the other computer.

Please use the original system hotkey settings on your computer operating system (the keyboard always follows the mouse cursor).

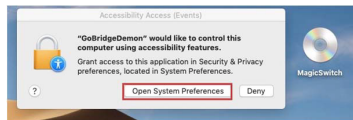


Allow Magic Switch on mac OS10.14

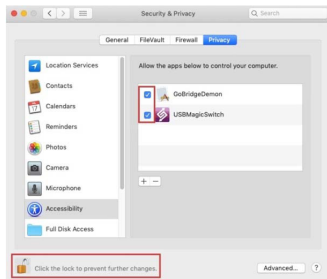
1. Please unplug the Magic Switch first
2. Open System Preferences> Security & Privacy > Privacy tab.



3. Plug-in the Magic Switch. When the system appears "Accessibility Access" press "Open System Preferences"



4. Click on "Click the lock to prevent further changes" and key in your Mac password to make change.
5. Check-Mark the box next to GoBridgeDaemon & Magic Switch
6. Click the lock again to save the changes



If have driver install questions or need software instructions.

Please go to SIIG website. Use product number "JU-CSL111-S1" to find & download the detail user manual.

Thanks



USB 3.0 Data KM Magic Switch Console Cable

Quick Start Guide



Support

For more info or tech support

<http://www.siig.com/support>

Lot number sticker

