



24-Port AV Over IP Smart Matrix Switcher

Quick Start Guide



04-1224A

P/N: CE-SW0111-S1

Dear Valued Customer
(JUST WANTED YOU TO KNOW)
WE REALLY
APPRECIATE
YOUR PURCHASE
~thank you~

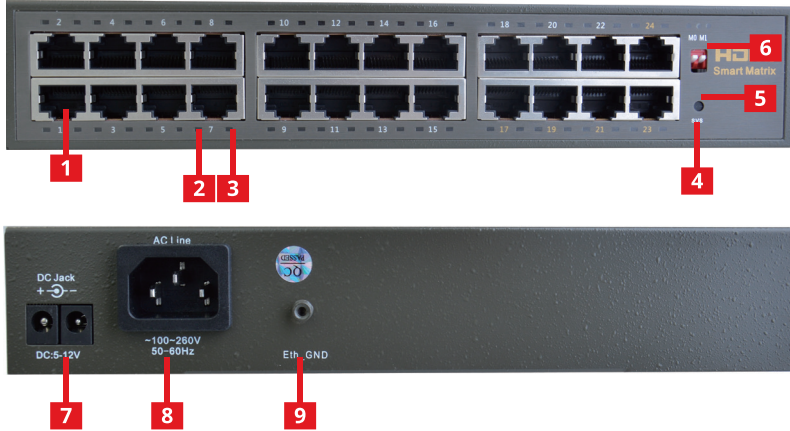
Features

- Supports user management and limits one user to login.
- Supports Unknown Unicast/ Broadcast/ Multicast Storm Control.
- Supports default configuration which can be restored to overwrite the current configuration which is working on via Web UI and Reset button of the switch.

Package contents

- 24-Port AV Over IP Smart Matrix Switcher
- Power core
- Mounting Kits
- Quick Start Guide

Layout

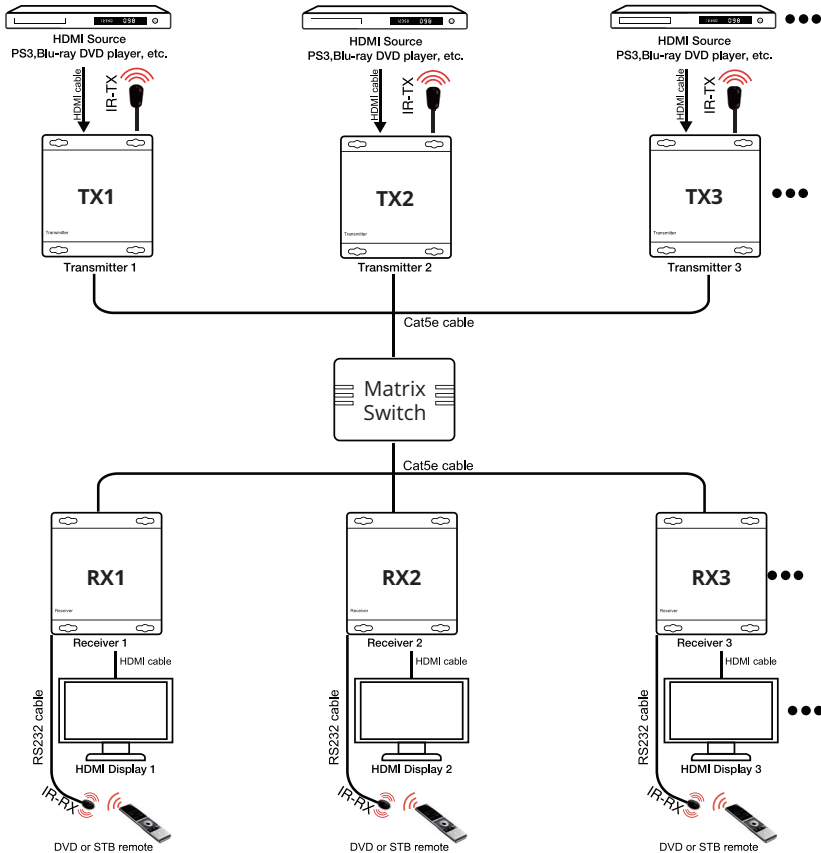


1. RJ45 port (24 ports)
2. Ethernet speed indicator (for 24 ports)
3. LINK/ACTION indicator (for 24 ports)
4. LED indicator for system
5. Factory reset button
6. DIP Switch (no functions, please don't change it)
7. DC input (no functions, please don't use it)
8. AC input
9. Grounded

Reset switch to default

1. Power on switch and wait 1 minute
2. Press factory reset button more than 10 second

Application

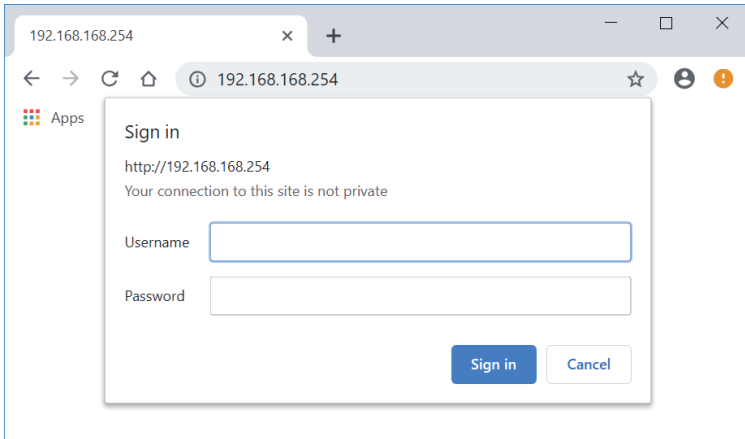


Connect TX to the “Input port” of Matrix Switch and Connect RX to the “Output port” of Matrix Switch. (Please refer to page 5 “port setting”) **Port 23 & 24 are for WEB control use**

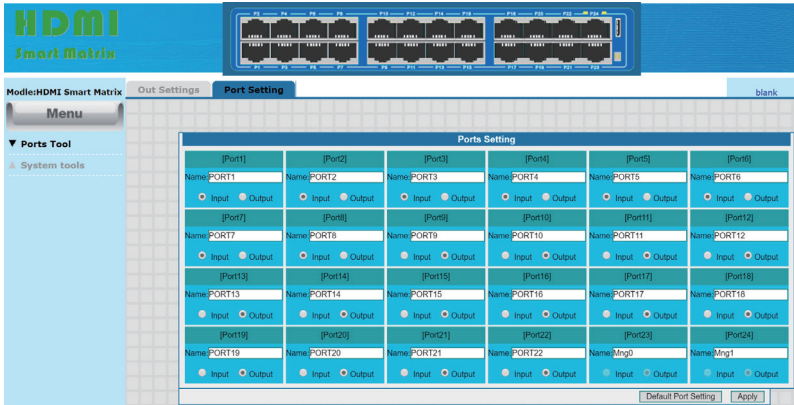
Note: Smart Matrix Switcher can only cascade to normal Ether switch. All ports of the Ether switch will display the source from the port that you connect to Smart Matrix Switcher. For example, BD player connect to port 1 (input port) and port 9 (output port) belong to port 1. You cascade port 9 to Ether switch. All ports of the Ether switch will only display BD player screen.

WEB setting

- Login
 1. Connect PC to port 23 or port 24 of switch via Ethernet cable
(Only port 23/24 can control the switch setting)
 2. Please set your PC IP address to 192.168.168.X(1-253) and
subnet mask 255.255.255.0
 3. Switch default IP is 192.168.168.254
User name: **admin** Password: **admin**

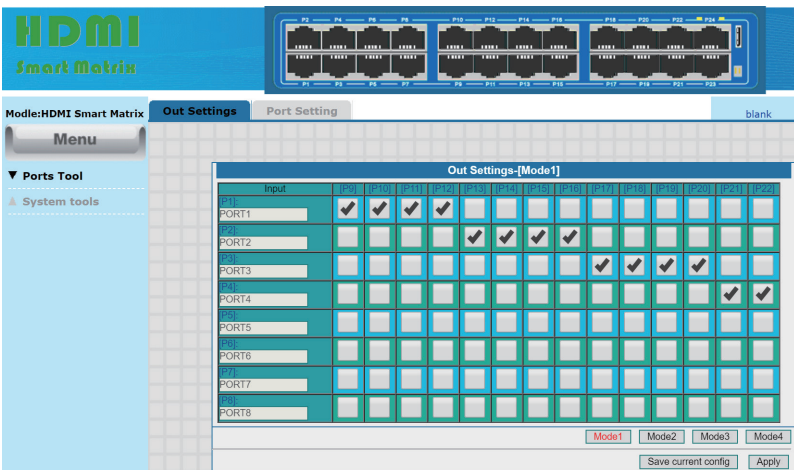


- Port setting
 1. Select “Port setting” in port tool as below
 2. You can click “input” or “output” by your own choice
 3. When the port is set as “input”, it should be connected to HDMI
TX unit, when the port is set as “output”, it should be connected
to HDMI RX unit

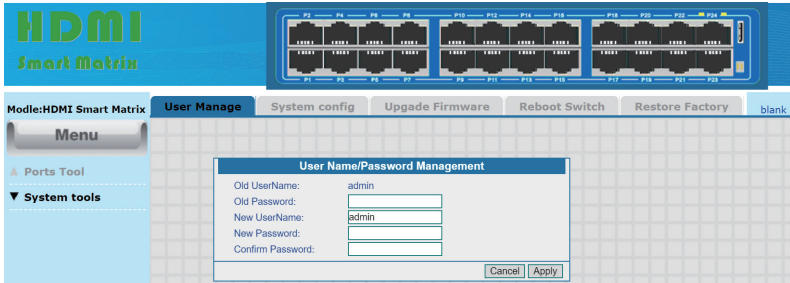


- Out settings

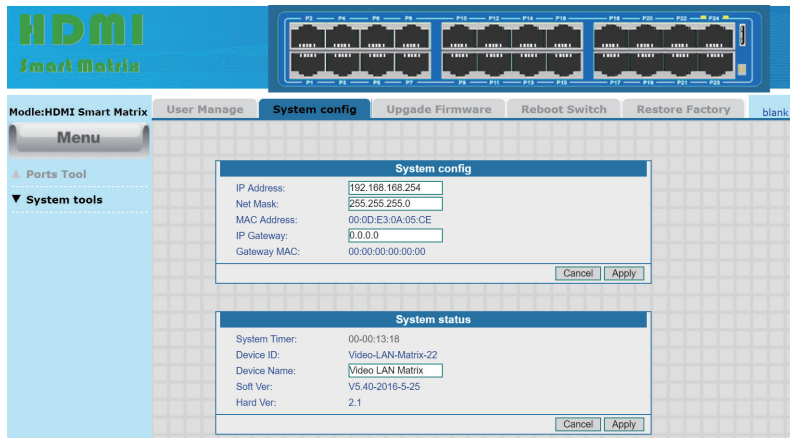
1. Select "Out settings " in port tool as below
2. You can set "output" port belong to which "input" port
3. For below example, port 9, 10, 11, 12 will display port 1 video



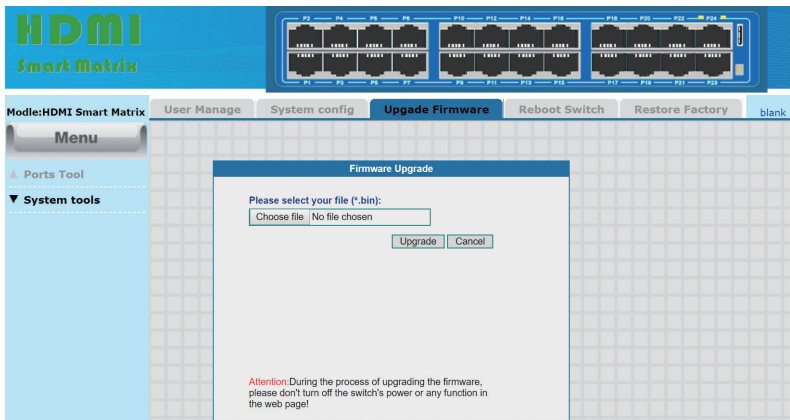
- User Manage



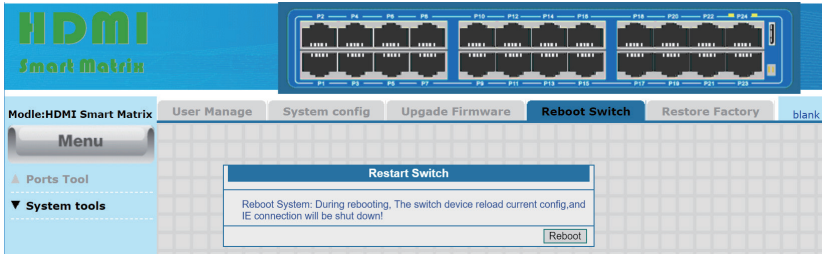
- System config



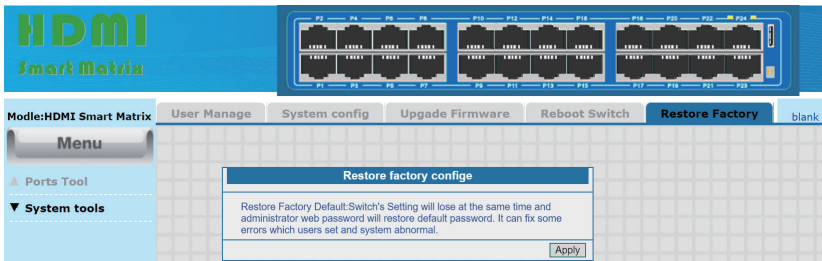
- Upgrade Firmware



- Reboot Switch



- Restore Factory



Support

For more info or tech support
<http://www.siig.com/support>

Apr, 2019 Copyright © 2019 by SIIG, Inc. All rights reserved.