



4x1 HDMI Seamless Quad-Split Multi-Viewer Switcher

User Manual



04-1245A

P/N: CE-H25R11-S1

Features

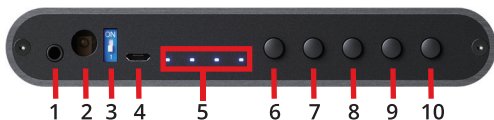
- 4 x HDMI inputs and 1 x HDMI output
- Input resolution supports 480i/480p/576i/576p/720p/1080i/1080p
- Output resolution supports 720p@60 & 1080p@60
- Supports HDCP 1.4
- Supports 5 Display Modes: One-View Mode , Dual-View Mode(left & right), Quad-View Mode, Quad-View Cycled Mode, Quad-View H mode
- Supports seamless switching in One-View Mode
- Supports audio extraction via stereo audio from selected HDMI input
- Supports audio switch function
- Firmware upgradable for support of new features and technology enhancements
- Software control through micro-USB
- Supports remote control, software and push button control

Package Contents

- Quad-Split Multi-Viewer Switcher
- Power adapter DC 5V/2A
- Remote control
- User Manual

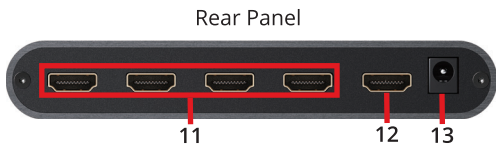
Layout

Front Panel



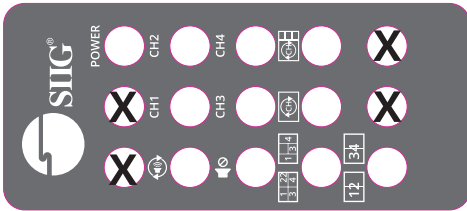
1. Stereo output (3.5mm)
2. IR SENSOR: for remote control
3. Dip Switch: [UP] Normal mode;
[DOWN] Firmware Update mode
4. Micro-USB: for software control or
firmware update
5. Source Status LED: Input source LED
(from the right to the left is input 1-4)
6. One-View Mode : Switch source in
One-View (full screen) mode

7. Audio Switch: Switch stereo audio out from source 1-4 or mute Quad-View
8. Cycled Mode: Switch source in Quad-View Cycled Mode
9. Default layout Modes: Switch 3 default layout modes Dual-View Mode(left & right), Quad-View Mode, Quad-View H mode
10. 1080p/ 720p: Switch output resolution in 1080p/ 720p



11. SOURCE 1-4: HDMI inputs
(from the left to the right is input 1-4)
12. HDMI OUT: HDMI output
13. Power jack: DC 5V/2A

Remote control



Software Control through Micro-USB port

- System Requirement

- 1.OS information: MS Win XP/7/8/10

- 2.Baud rates: 115200

- 3.Software size: 3KB

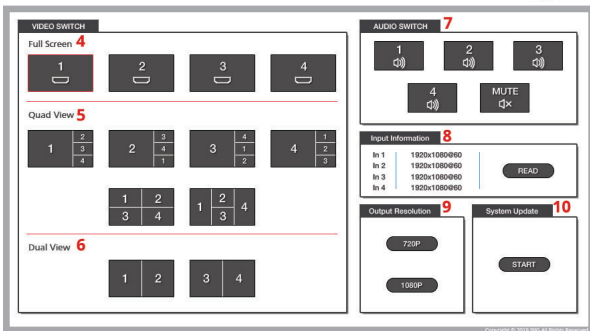
- 4.Minimum RAM requirement: 256MB

- Control Interface

Before clicking on the icon of the software, make sure you have secured the connection between your computer COM port and the device.

When clicking on the software control program, the following window will pop-up (under Microsoft Windows 7, please run as administrator.)

After you clicking the OK button, it will enter directly to the control interface. (Please click DISCONNECTED button to connect the software)



1. Refresh

This button can update this software state.

2. COM Port Selection & Connection Status

Please ensure you have secured the connection between your computer COM port and the device. Select correct COM port and click the connection/disconnect button to connect software.

3. Factory Reset

The process of default reset will take about 10~15 seconds.

4. Video Switch – Full Screen

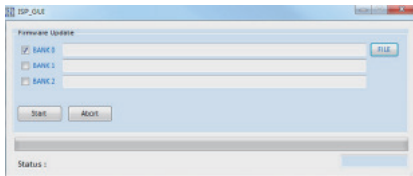
Select input source in One-View Mode

- 5. Video Switch – Quad-View Mode**
We provides 3 default Quad-View Mode for user to select different layout modes.
- 6. Video Switch – Dual-View Mode**
It has 2 Dual-View layout modes for user to select.
- 7. Audio Switch**
To set up the audio source of the output (stereo and HDMI).
- 8. Input Information**
Show the input source resolution.
Click “READ” button to refresh input resolution information.
- 9. Output Resolution**
1080p & 720p for user select.

10. System Update

Before you start to update, please make sure you have secured the connection between your computer COM port and the device.

1. Please move the dip switch on F/W mode, and then power cycle the device.
2. Click "Start" button to do firmware update. The firmware update window shows up as below.



3. Click "FILE" button to load firmware file.
4. Click "Start" button to start firmware update process.
5. After updating, please move the dip switch on normal mode and power cycle the device.

Blank Page

Blank Page

Blank Page

Dear Valued Customer

(JUST WANTED YOU TO KNOW)

**WE REALLY
APPRECIATE
YOUR PURCHASE**

~thank you~

Support

For more info or tech support

<http://www.siig.com/support>

July, 2019 Copyright © 2019 by SIIG, Inc. All rights reserved.