



Dual Head Full HD HDMI Video Docking Station

User Manual



04-1307A

P/N: JU-DK0L11-S1

Table of Contents

• Features	3
• Package contents	4
• System requirements	4
• Front View	5
• Rear View	6
• DisplayLink driver installation	7
• Allow “DisplayLink” app on Mac	9
• Supported Display resolution	10
• Q & A	11
• Support	12

Features

- Support USB 3.0 5G speed connection between host and docking station.
- Support USB 2.0 type-A port x4, support 480Mbps speed and 5V/500mA power output
- Support USB 3.0 type-A port x2, support 5Gbps speed and 5V/900mA power output (USB 3.0 the same as USB 3.1 Gen1 or USB 3.2 Gen1)
- Support two DisplayLink HDMI output
- DisplayLink video output resolution up to 1080p@60Hz
- DisplayLink video output support PCM 2.0ch and 5.1ch audio
- Support Ethernet 10/100/1000Mbps
- Support 3.5mm Headset jack

Package contents

- Dual Full HD video docking station
- Power adapter DC 12V / 2A
- USB 3.0 Type B to Type-A cable
- Driver CD
- User Manual

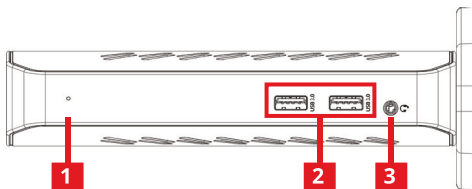
System requirements

- Host computer system with an available USB 3.0 Type-A port
- Windows® 10 / 8 .1/ 8 / 7 (32/64 bit)
- Mac OS X® 10.10 to 10.13.3, 10.14, 10.15

Operating system requirements are subject to change. For the latest requirements, please visit www.siig.com and search JU-DK0L11-1

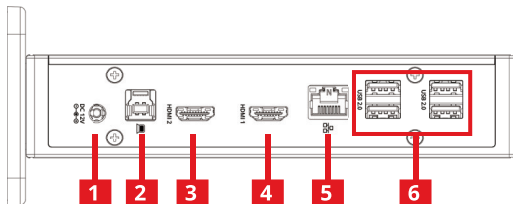
Note: If you connect the docking station to a USB 2.0 host port or use a USB 2.0 cable, performance will be limited.

Front View



1. **Power LED:**
keep shining when power on
2. **USB 3.0 ports:**
USB 3.0 Type-A port support USB UASP mode, 5Gbps speed and 5V/900mA power output.
connect for USB peripherals
3. **3.5mm headset jack:**
connect to headset
(include audio and microphone)

Rear View



- 1. Power jack:**
 Connect the Power Adapter to the DC Power Input Port on the Docking Station. DC 12V/2A
- 2. USB 3.0 Type-B host:**
 Connect to USB 3.0 Type-A port of system via include USB 3.0 Type B to Type-A cable.
- 3. DisplayLink HDMI video output 2**
 This video output via DisplayLink chip
 Connect to display.
 Resolution up to 1080p@60Hz
- 4. DisplayLink HDMI video output 1**
 This video output via DisplayLink chip
 Connect to display.
 Resolution up to 1080p@60Hz

5. RJ-45 Gigabit Ethernet port

connect to ethernet router or switch
(Support 1000/100/10 Mbps)

6. USB 2.0 ports:

USB 2.0 Type-A port support 480Mbps speed and 5V/500mA power output.
connect for USB peripherals

DisplayLink driver installation

- “DisplayLink” driver is required
 - Without DisplayLink driver install, DisplayLink video output 1 & 2 can not output video.
 - For Mac OS X® 10.13.4 to 10.13.6, Please check DisplayLink website for driver update and notes
<http://www.displaylink.com/downloads/macos>
1. Please find the driver in driver CD or download from SIIG website

2. Follow the screen instructions to complete the installation and restart your PC/NB

(For Mac OS® 10.13.3 and the above, the system would display a “System Extension Blocked” warning while driver installing. Please allow “DisplayLink Corp” at Security & Privacy setting.)

3. For DisplayLink configuration, please search & refer to Support document on DisplayLink website
<https://support.displaylink.com/>

Windows

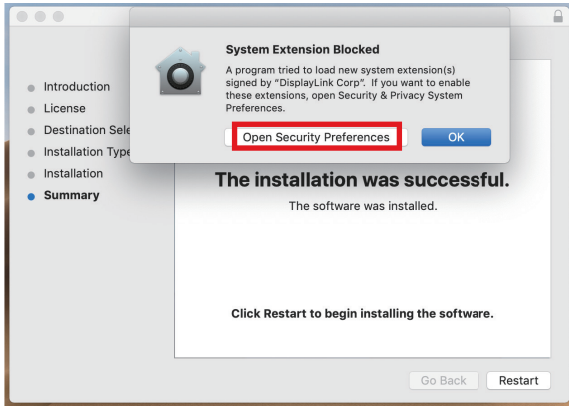
How to configure DisplayLink displays on Windows

MAC

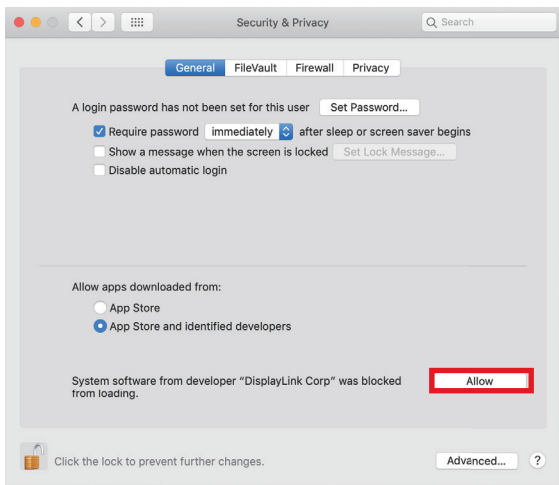
How to configure DisplayLink displays on Mac OS X

Allow “DisplayLink” app on Mac

Open Security Preference while driver installing



Allow “DisplayLink Corp” app



Supported Display resolution

Display Output	DisplayLink Output 1 A	DisplayLink Output 2 B
Only A	1080p@60	N/A
Only B	N/A	1080p@60
A + B	1080p@60	1080p@60

Q & A

- **Why DisplayLink output has no video?**

Ensure the DisplayLink driver have installed.

- **Why play video on DisplayLink output will have latency or cause CPU heavy loading ?**

DisplayLink outputs are kind of USB video extend via DisplayLink chip which needs extra CPU computing.

Dear Valued Customer

**WE REALLY
APPRECIATE
YOUR PURCHASE**

~thank you~

Support

For more info or tech support
<http://www.siig.com/support>