



3G-SDI to HDMI Converter with Scaler and Monitor User Manual



04-1332A

P/N: CE-SD0J11-S1

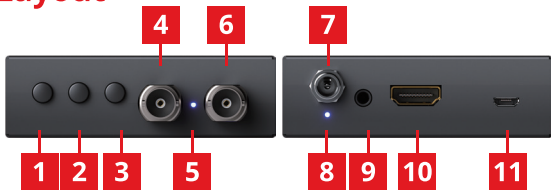
Features

- OSD control interface
- Push button for control
- SDI loop-out
- Supports eye diagram scanning
- Supports audio level bars
- Supports the cable length indicator
- Supports output test patterns
- Input bandwidth 2.970Gpbs
- Output maximum pixel rate : 165MHz
- Output video resolutions support multiple VESA standards
- Deinterlacer supported
- Supports noise reduction and video enhancement features
- Video H/V mirror supported
- Active video area adjustment supported
- USB firmware upgradable for expanding compatibility

Package Contents

- 3G-SDI to HDMI Converter with Scaler and Monitor
- Power adapter DC 5V/2A
- User Manual

Layout



1. **PUSH BUTTON:** OSD up or Volume up (for stereo out)
2. **PUSH BUTTON:** OSD down or Volume down (for stereo out)
3. **PUSH BUTTON:** OSD Menu or selection button
4. **SDI IN:** Connect to a 3G/HD/SD-SDI source
5. **LED INDICATOR:** Input signal indicator LED
6. **SDI LOOPOUT:** Connect to a 3G/HD/SD-SDI display
7. **POWER JACK:** DC 5V/2A
8. **POWER LED:** Power LED indicator
9. **STEREO AUDIO OUT:** Connect to stereo speaker
10. **HDMI OUT:** Connect to HDMI display
11. **MICRO USB:** F/W update

OSD Menu

Output Setup	Output Format	Bypass, 600x480, 800x600, 1024x768, 1152x864, 1280x768, 1280x1024, 1360x768, 1440x900, 1600x1200, 1680x1050, SD (480p, 576p, 480i, 576i), HD (720p, 1080i, 1080p)
	Test Pattern	Disable, Diagonal, W-VRamp, W-HRamp, H-Ramp, Window, Gray, Color, Hatch, Cross, White
	Audio Mute	Off, On
Image	Contrast	0~255 of Contrast Level
	Brightness	0~255 of Brightness Level
	Saturation	0~255 of Saturation Level
	Hue	0~255 of Hue Level
	Gamma Adjust	Off, 1.1, 1.3, 0.7, 0.9
	Color Tone	Off, Green, Skin
	Edge Enhance	Off, Max, Mid, Min
Adjustment	H-Mirror	Off, On
	V-Mirror	Off, On
	H-Shift	0~200 of H-Shift Level
	V-Shift	0~100 of V-Shift Level
System	Input Format	Input Format information
	F/W Version	Firmware Version information
	Factory Reset	No, Yes
	Eye Diagram	Quit, Scan
	OSD Enabled	All Enabled, All Disabled, Only Audio, Only Format, Format & Audio, Format & Range*

Notes:

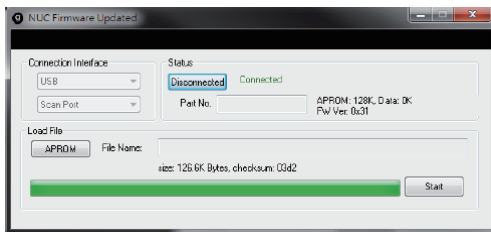
* The display of Range depends on the characteristics, length and quality of the coaxial cable. Take the Belden 1694A coaxial cable as an example. For the length of 1m, 5m, 50m, 100m, the range will display short, short, long and long.

Resolution Specifications

Input	Output
480i @ 60	[SD]
576i @ 50	480i @ 60
720p @ 60/59.9/50	576i @ 50
1080i @ 60/59.9/50	480p @ 60
1080p @	576p @ 50
60/59.9/50/30/29.9/25/24/23.9	[HD]
	720p @ 50/59/60
	1080i @ 50/59/60
	1080p @ 23/24/25/29/30/50/59/60
	[Other]
	640x480 @ 60/72/75
	800x600 @ 60/72/75
	1024x768 @ 60/70/75
	1152x864 @ 75
	1280x768 @ 60/75
	1280x1024 @ 60/75
	1360x768 @ 60
	1366x768 @ 60
	1440x900 @ 75
	1600x1200 @ 60
	1680x1050 @ RB

Firmware Update

1. Remove the power adapter from the device.
2. Connect the device to a PC/laptop via micro USB cable.
3. Open update tool (NUC Firmware Updated) and load the firmware file.
4. Click connect, then plug the power adapter.
5. Click start to activate the firmware update process.
6. Power cycle the device.



Blank Page

Dear Valued Customer

**WE REALLY
APPRECIATE
YOUR PURCHASE**

~thank you~

Support

For more info or tech support

<http://www.siig.com/support>

Aug, 2020 Copyright © 2020 by SIIG, Inc. All rights reserved.