



5x3 Multi-Format Presentation Switcher & Recorder

User Manual



04-1336A

P/N: CE-H26S11-S1



Safety and Notice

The device has been tested for conformance to safety regulations and requirements, and has been certified for international use. However, like all electronic equipment, the device should be used with care. Please read and follow the safety instructions to protect yourself from possible injury and to minimize the risk of damage to the unit.

- Follow all instructions and warnings marked on this unit.
- Do not attempt to service this unit yourself, except where explained in this manual.
- Provide proper ventilation and air circulation and do not use near water.
- Keep objects that might damage the device and assure that the placement of this unit is on a stable surface.
- Use only the power adapter and power cords and connection cables designed for this unit.
- Do not use liquid or aerosol cleaners to clean this unit.
- Always unplug the power to the device before cleaning.



Features

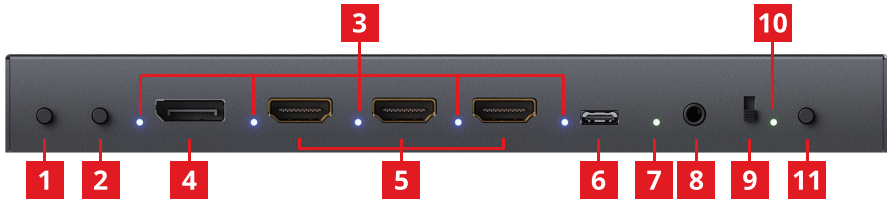
- Supports multiple video format inputs:
3x HDMI 2.0a, 1x DP1.2, 1x Type C
- Input resolution supports up to 4K2K@60 4:4:4
- Supports HDMI & HDBaseT-Lite outputs
- Output resolution supports:
 - HDMI output: up to 4K2K@60Hz 4:4:4
 - HDBaseT-Lite output: up to 4K2K@60 4:2:0 or 4K@30
- HDBaseT extend distance
70m (230ft) at 1080p
40m (131ft) at 4K2K@60(4:2:0) or 4K@30
- HDCP 2.2 and 1.4 compliant
- Supports to record video & voice to the USB flash drive or SD card
- Supports built-in & external microphone
- Supports xvYCC, x.v.Color & Deep color
- The switcher can select any inputs by push-button control

Package contents

- 5x3 Multi-Format Presentation Switcher & Recorder
- Power adapter DC 5V/4A
- User Manual

Layout

Front Panel



1. Channel Selected Button: Right
2. Channel Selected Button: Left
3. Selected Source indicator: Shine when selected
4. DisplayPort Input: Connect to a DisplayPort source
5. HDMI Input 1-3: Connect to HDMI sources
6. Type-C Input: Connect to a Type-C DP Alt mode source
(Do NOT support smart phone)
7. Input Signal LED: Shine when receiving the input signal
8. Audio In: Connect to Microphone
9. Slide Switch: Select the recording storage device
[UP]: USB flash drive
[DOWN]: SD Card
10. Recorder Status LED:
[Solid Green]: The device is recording
[Fast Blink]: The device is in the process of saving file
[Slow Blink]: The USB flash drive or SD card is connecting
11. Recording Button: Start/Stop recording function

Rear Panel

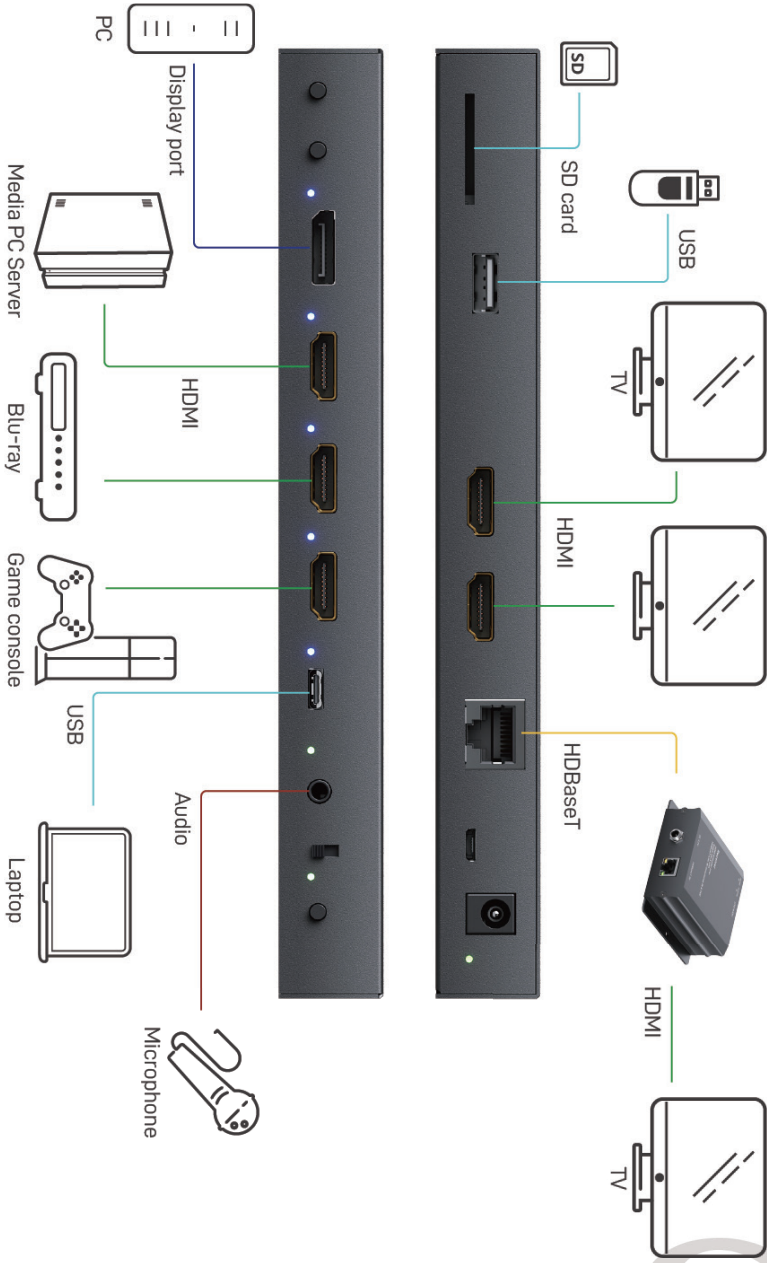


12. SD Card Port for Recording: Insert an SD card
13. USB Port for Recording: Connect a USB flash drive
14. HDMI Output 1-2: Connect to HDMI displays
15. RJ-45 [HDBaseT output]: Plug-in a Cat-5e/6 cable that needs to be linked to the receiving unit
(Optional: package does not include HDBaseT receiver)
16. Micro-USB: for firmware update
17. DC Jack: Connect to a power adapter DC 5V/4A
18. Power LED: Power LED indicator

Noted

1. After recording, the device will create files which suffix is .mp4. Each .mp4 file name is saved as record_(serial number), serial number starts from 0, 1, 2, The file name serial number will re-start from 0, 1, 2, after product power cycle.
2. The date and time of all recording files will be saved as 2013/1/1 13:00.
3. The recording function supports storage device(USB flash drive/ SD card) in the FAT32 and NTFS format.
4. The storage space will need about 6GB for recording one hour
5. Press and hold recording button for 3-5 seconds to open/close HDCP mode. On HDCP mode, the device can show the HDCP content video. User can know the device is on HDCP mode or not by seeing the recorder status LED when you power on device.
[HDCP mode ON]: the LED flashes once
[HDCP mode OFF]: the LED flashes twice
6. The device can NOT record the HDCP content video.
7. Type-C input do NOT support smart phone

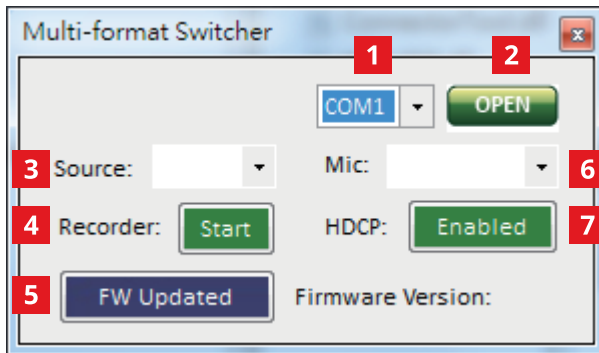
Application



Software control

Please use the serial number “CE-H26S11-S1” to search on SIIG website and download the control software.

- System Requirement
 1. OS information: MS Win XP/7/8/10
 2. Baud rates: 115200
 3. Software size: 1MB
 4. Minimum RAM requirement: 256MB



1. COM Port Selection

Please ensure you have secured the connection between your computer COM port and the device. Select correct COM port.

2. Connected/disconnected Button

Click open/close button to connect/disconnect software

3. Input Selection

Select input (DisplayPort, HDMI1, HDMI2, HDMI3, Type-C)

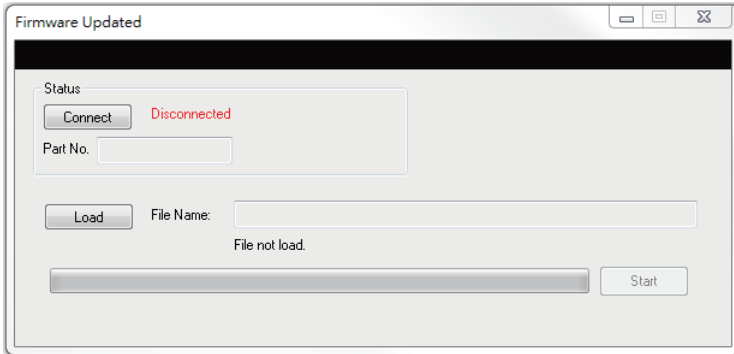
4. Recording Button

Start/Stop recording function

5. Firmware Updated Button

Before you start to update, please make sure you have secured the connection between your computer COM port and the device.

1. Click “FW Updated” button to do firmware update.
2. The firmware update window shows up as below.



3. Click “Load” button to load firmware file.
4. Click “Connect” button to check that device is connected
5. Click “Start” button to start firmware update process.
6. After updating, please power cycle the device.

6. Microphone Selectio

Select microphone device (Built-in MIC, External MIC or both)

7. HDCP Mode On/Off

Enable/Disable HDCP

Blank page

Blank page

Thank You
for your purchase!

Support

For more info or tech support
<http://www.siig.com/support>

Oct, 2020 Copyright © 2020 by SIIG, Inc. All rights reserved.