



# Full HD Quad-View HDMI KVM MultiView Processor

## User Manual



04-1337A

P/N: CE-KV0A11-S1



# Safety and Notice

The device has been tested for conformance to safety regulations and requirements, and has been certified for international use. However, like all electronic equipment, the device should be used with care. Please read and follow the safety instructions to protect yourself from possible injury and to minimize the risk of damage to the unit.

- Follow all instructions and warnings marked on this unit.
- Do not attempt to service this unit yourself, except where explained in this manual.
- Provide proper ventilation and air circulation and do not use near water.
- Keep objects that might damage the device and assure that the placement of this unit is on a stable surface.
- Use only the power adapter and power cords and connection cables designed for this unit.
- Do not use liquid or aerosol cleaners to clean this unit.
- Always unplug the power to the device before cleaning.



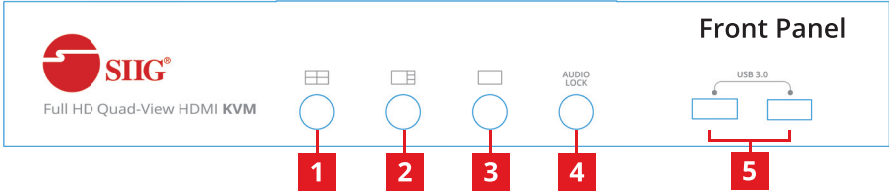
# Features

- Input resolution supports 480i/480p/576i/576p/720p/1080i/1080p
- Output resolution supports 1080p@60
- Video bandwidth: 6.75Gbps
- HDCP 1.4 compliant
- Supports 3 Display Modes:  
One View Mode, Quad View Mode, Quad View Cycled Mode
- Supports seamless switching on one view mode
- Supports mouse roaming
- Supports separate line input and output
- Supports built-in 4-port USB3.1 Gen 1 HUB to share USB devices
- Supports independent HID keyboard & mouse ports
- Supports hotkeys
- Firmware upgradable for support of new features and technology enhancements
- The KVM can switch every input by push buttons
- Plug and Play without any driver needed

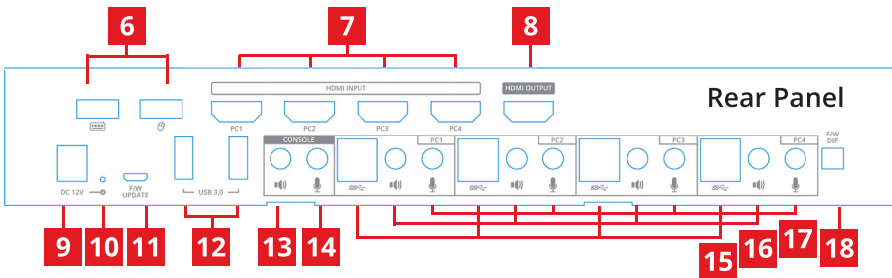
# Package contents

- Full HD Quad-View HDMI KVM MultiView Processor
- 3-in-1 USB host and mic/stereo cable x4
- HDMI cable x4
- Power adapter DC 12V/2A
- User Manual

# Layout



1. Quad View mode 1: Averaged Quad View
2. Quad View mode 2: 1 Main and 3 sub Quad View
3. One View mode: Switch source in one view (full screen) mode
4. Audio lock: Lock the selected PC stereo audio in/out to console
5. USB 3.1 Gen 1 Hub: Connect to USB devices, 5Gbps, 5V/900mA



6. Console USB Ports: Connect to keyboard & mouse
7. KVM HDMI IN 1-4: Connect to the PC
8. Console HDMI OUT: Connect to display
9. DC power jack: Connect to power adapter DC 12V/2A
10. Power Status: Power indicator LED
11. Micro USB: For F/W update
12. USB 3.1 Gen 1 Hub: Connect to USB devices, 5Gbps, 5V/900mA
13. Console Stereo Audio OUT: Connect to 3.5mm speaker
14. Console Stereo Audio IN: Connect to 3.5mm Microphone

15. KVM USB 3.1 Gen 1 Type-B: Connect the USB cable to PC
16. KVM Stereo Audio IN 1-4: Connect the 3.5mm cable to PC
17. KVM Stereo Audio OUT 1-4: Connect the 3.5mm cable to PC
18. 2-Pin Dip Switch: For F/W update

		Position		Description
PIN#1		ON[↓]	ON[↓]	MCU firmware update mode
		ON[↓]	OFF[↑]	KVM firmware update mode
PIN#2		OFF[↑]	ON[↓]	Working mode
		OFF[↑]	OFF[↑]	Reserved

## Hotkey

Default setting, all of the following commands begin by pressing the [Scroll Lock] or [Ctrl] key twice. Please follow the Hotkey command listed below for selected operating functions:

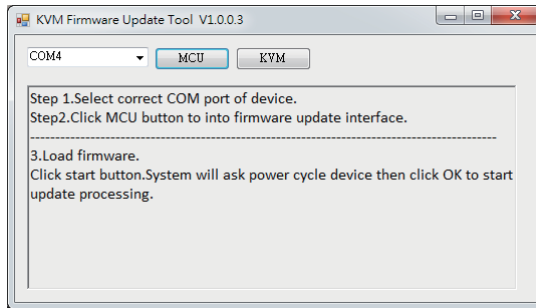
Hot key Definition	
[Scroll Lock] + [Scroll Lock] + [NUMBER1~4]	Switch input 1~4 source to output
[Ctrl] + [Ctrl] + [NUMBER1~4]	
[Scroll Lock] + [Scroll Lock] + [F1]	Quad view mode 1
[Ctrl] + [Ctrl] + [F1]	
[Scroll Lock] + [Scroll Lock] + [F2]	Quad view mode 2
[Ctrl] + [Ctrl] + [F2]	
[Scroll Lock] + [Scroll Lock] + [L] + [U]	USB Lock/ USB Unlock
[Ctrl] + [Ctrl] + [L] + [U]	
[Scroll Lock] + [Scroll Lock] + [L] + [A]	3.5mm Audio Lock/ Audio Unlock
[Ctrl] + [Ctrl] + [L] + [A]	
[Scroll Lock] + [Scroll Lock] + [A] + [Number 1~4]	Under quad view mode, select PC 1~4 Audio to HDMI output
[Ctrl] + [Ctrl] + [A] + [Number 1~4]	
[Scroll Lock] + [Scroll Lock] + [O] + [F] + [F]	Turn off HOTKEY function
[Ctrl] + [Ctrl] + [O] + [F] + [F]	
[Scroll Lock] + [Scroll Lock] + [O] + [N]	Turn on HOTKEY function
[Ctrl] + [Ctrl] + [O] + [N]	

# Firmware update

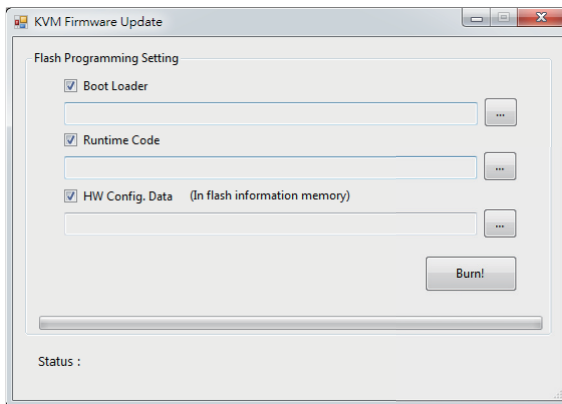
## Firmware update is proceeded through Micro-USB

- KVM F/W update

1. Connect the Micro-USB to USB cable between PC and device
2. Set dip switch [PIN#1,PIN#2] to ON[↓], OFF [↑]and then power on device
3. Open firmware update software and then select COM Port



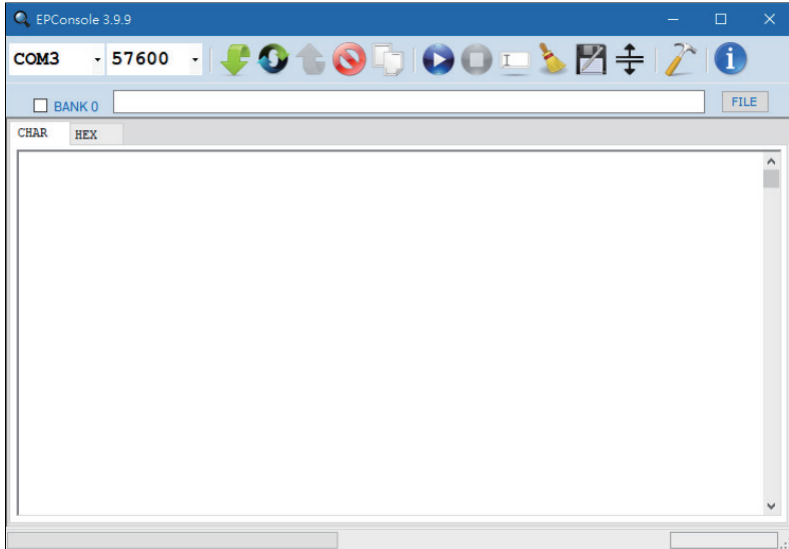
4. Click “KVM” button to open “KVM Firmware Update” windows. Check all items and click each “...” button to select the file which you want to write into the device. Click the “Burn” button to start the firmware update



5. After updating, please set the dip switch [PIN#1,PIN#2] to OFF[↑] ,ON[↓] and power cycle the device

## • MCU F/W update

1. Connect the Micro-USB to USB cable between PC and device
2. Set dip switch [PIN#1,PIN#2] to ON[↓], ON[↓]and then power on device
3. Open firmware update software and then select COM Port



4. Click "FILE" button to load firmware file.
5. Click "Green Arrow" button to start the firmware update process.
6. After updating, please set the dip switch [PIN#1,PIN#2] to OFF[↑] ,ON[↓] and power cycle the device

**Thank You**  
*for your purchase!*

## **Support**

For more info or tech support  
<http://www.siig.com/support>

Nov, 2020 Copyright © 2020 by SIIG, Inc. All rights reserved.