



Dual-View Universal Video to DVI-I Scaler



P/N: AV-GM01Q3-S1



Safety and Notice

The **AV-GM01Q3-S1 Dual-View Universal Video to DVI-I scaler** has been tested for conformance to safety regulations and requirements, and has been certified for international use. However, like all electronic equipments, the AV-GM01Q3-S1 should be used with care. Please read and follow the safety instructions to protect yourself from possible injury and to minimize the risk of damage to the unit.

- Follow all instructions and warnings marked on this unit.
- Do not attempt to service this unit yourself, except where explained in this manual.
- Provide proper ventilation and air circulation and do not use near water.
- Keep objects that might damage the device and assure that the placement of this unit is on a stable surface.
- Use only the power adapter and power cords and connection cables designed for this unit.
- Do not use liquid or aerosol cleaners to clean this unit. Always unplug the power to the device before cleaning.



TABLE OF CONTENTS

INTRODUCTION	1
FEATURES.....	1
PACKAGE CONTENTS.....	1
SPECIFICATIONS	2
IR REMOTE CONTROL.....	3
PANEL DESCRIPTIONS	5
HARDWARE INSTALLATION.....	6
DEFAULT SETTING	6
NOTICE	6
IR CONTROL TREE	7
SOFTWARE PROCEDURE	11
CONNECTION DIAGRAM	13
WARRANTY	14

INTRODUCTION

The **AV-GM01Q3-S1 Dual-View Universal Video to DVI-I scaler** offers the highest compatibility among composite, component, DVI, VGA, HDMI and S-Video to VGA and DVI in the market. This unique device supports analog and digital conversion and scaling without loss of quality. With the embedded advanced de-interlacer, interlaced video inputs, such as component, composite and S-Video, can be further improved. The wide range video support in both input and output can be up to WUXGA or 1080p.

AV-GM01Q3-S1 is designed to ease the conversion among the available video formats with affordable cost. With AV-GM01Q3-S1, the bothersome video format issues will not become a bottleneck in your applications. With versatile IR remote control, AV-GM01Q3-S1 offers a very easy way to convert, switch, adjust videos at your convenience. With PIP and PAP support, users can display two video inputs at the same time!

FEATURES

- DVI 1.0 compliant
- Scales up and down VESA compliant formats (VGA and DVI)
- Scales SD / ED / HD video inputs to VESA compliant formats
- PIP and PAP support
- Advanced video processing supports: noise reduction, color management, fleshtone control, dynamic contrast control, closed caption support for Composite, 3-D de-interlacing, 3:2/2:2 pull down detection and recovery.
- RS-232 Firmware upgradable to guarantee the functionality revised.
- Equivalent to 4x1 video switch
- Video output supports up to WUXGA, UXGA or 1080p
- Dual DVI and VGA outputs
- Versatile IR control
- Software controllable & serial protocol available
- Supports zoom, crop & TV wall application
- Portable size

PACKAGE CONTENTS

- | | |
|---|--------------------------------|
| ● 1 × AV-GM01Q3-S1 | ● 1 × DVI to VGA adapter |
| ● 1 × DC 5V 4A in-line with C7 power cord | ● 1 × IR Remote control |
| ● 1 × VGA to component breakout cable | ● 1 × Installation software CD |
| ● 1 × Composite&S-video breakout cable | ● 1 × User Manual |

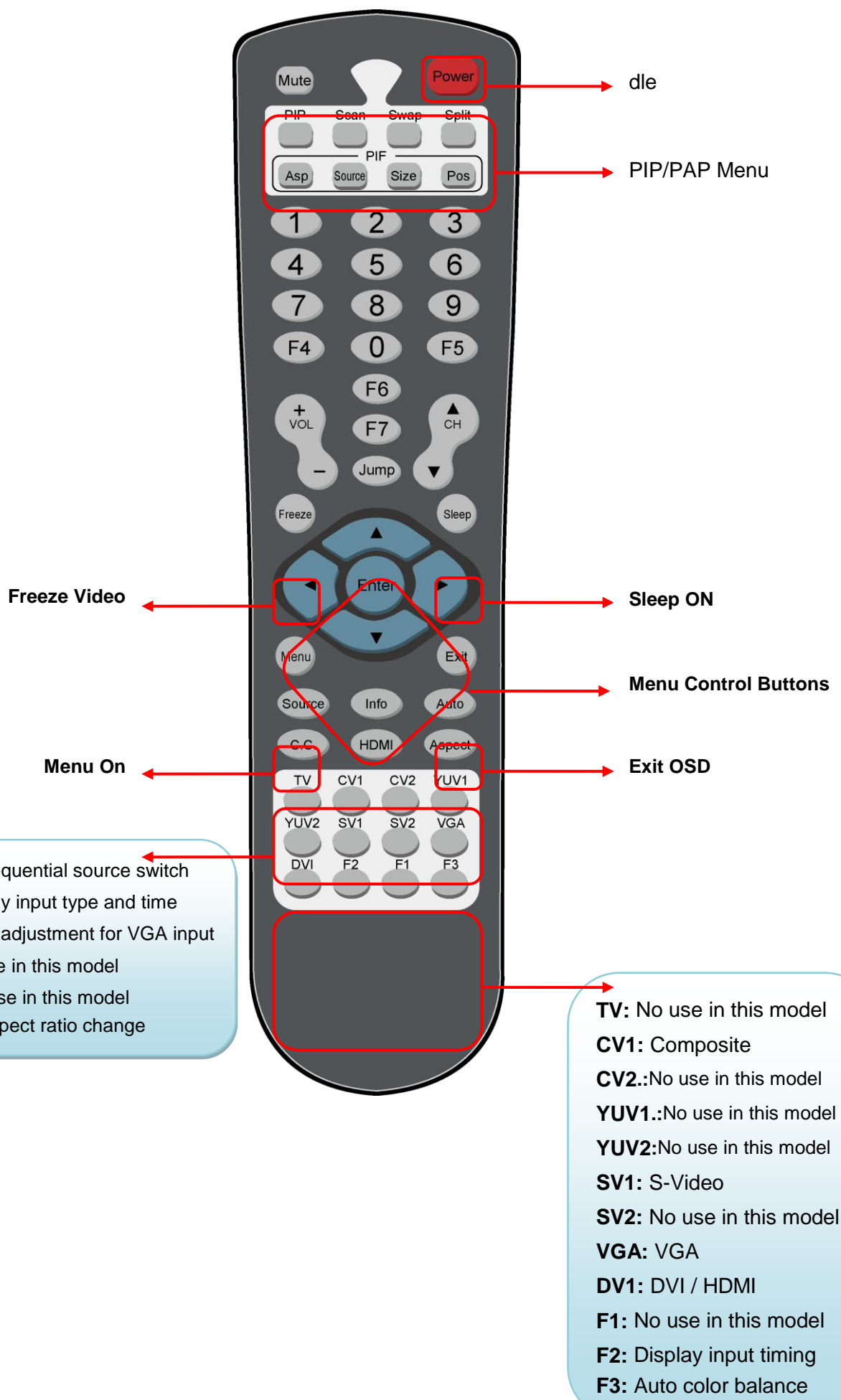
SPECIFICATIONS

Model Name		AV-GM01Q3-S1
Technical		
Role of usage		Video scaling & format converter
HDMI & HDCP Compliance		HDMI & HDCP 1.1
Digital video bandwidth		4.95 Gbps
Analog video bandwidth		165 MHz
Maximum resolution		1080p60 / 1920x1200@60
Input TMDS signal		1.2 Volts [peak-to-peak]
Input DDC signal		5 Volts [peak-to-peak, TTL]
Input		1x HDMI + 1x CVBS + 1x S-Video + 1x VGA + 1x YPbPr + 1x DVI
Output		1x DVI + 1x VGA
PIP / PAP		YES
Audio support		Stereo (24 bit ADC) / S / PDIF
S/PDIF support		48 KHz
ESD protection		[1] Human body model — 19kV [air-gap discharge] & 12kV [contact discharge] [2] Core chipset — 2kV
PCB stack-up		6-layer board [impedance control — differential 100Ω; single 50Ω]
IR remote control		Electro-optical characteristics: $\pi = 25^\circ$ / Carrier frequency: 38 kHz
DVI connector		DVI-I [29-pin female]
RS-232 connector		DE-9 [9-pin D-sub female]
RCA connector		9 pin S-Video, Composite, and S / PDIF
DIP switch		2-pin for reset
Mechanical		
Housing		Metal enclosure
Dimensions [L x W x H]	Model	125 x 165 x 28mm [5" x 6.5" x 1.1"]
	Package	330 x 200 x 95mm [1'1" x 7.9" x 3.7"]
	Carton	495 x 440 x 380mm [1'8" x 1'5" x 1'3"]
Weight	Model	485g [1.1 lbs]
	Package	1360g [3.1 lbs]
Fixedness		Wall-mounting case with screws
Power supply		Interlocked 5V 4A DC
Power consumption		15 Watts [max]
Operation temperature		0~40°C [32~104°F]
Storage temperature		-20~60°C [-4~140°F]

Relative humidity

20~90% RH [no condensation]

IR REMOTE CONTROL

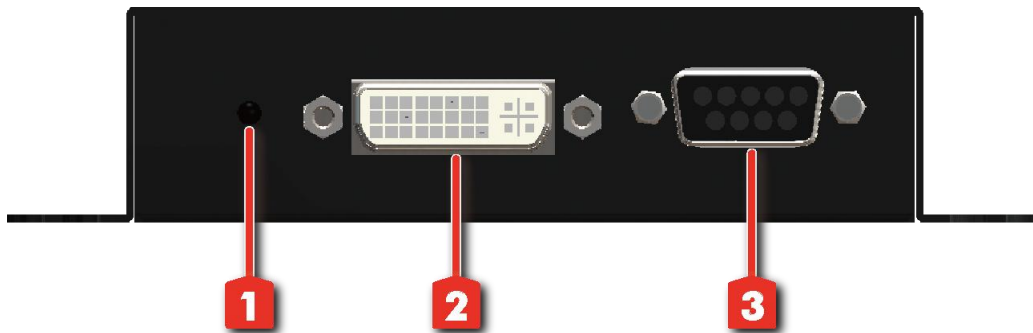




The buttons not listed above are not in use for this model.

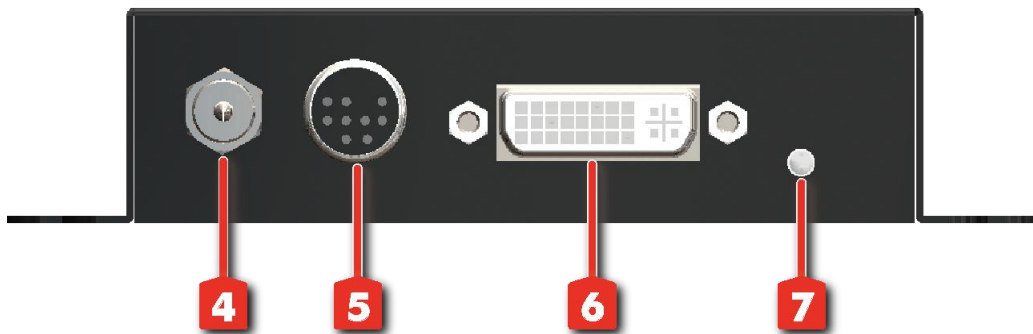
PANEL DESCRIPTIONS

Front Panel



- 1. IR: IR sensor
- 2. DVI: DVI & VGA output
- 3. RS-232: Firmware update and future software control

Rear Panel



- 4. Power: +5V DV latch-locking
- 5. PS2: S-Video/Composite input
- 6. DVI: HDMI/DVI/Component/VGA input
- 7. LED: Indicates power up, idle, no signal

DIP Switch

Switch Position	OFF[↑]-OFF[↑]	ON[↓]-ON[↓]
Input 1	Normal	Reset
Input 2	Normal	Reset

HARDWARE INSTALLATION

1. Connect your video sources to the input connectors.
2. Connect your VGA, HDMI, or DVI enabled monitors into the device's DVI-I output port.
3. Power up the AV-GM01Q3-S1.
4. Use IR to select the input, setup the output resolution, and adjust your video format

DEFAULT SETTING

1. Power up the AV-GM01Q3-S1.
2. To reset AV-GM01Q3-S1 back to the factory default values, pull up-and-down the **DIP switch 1 & 2 from OFF to ON** to complete the process. You **NEED** to pull back the DIP switch back to **OFF** in order to get AV-GM01Q3-S1 work normally.

NOTICE

1. As the video formats evolves and expands, AV-GM01Q3-S1 is firmware upgradable for this fashion.
2. PIP and PAP only support digital and analog display or dual display for single input.

IR CONTROL TREE

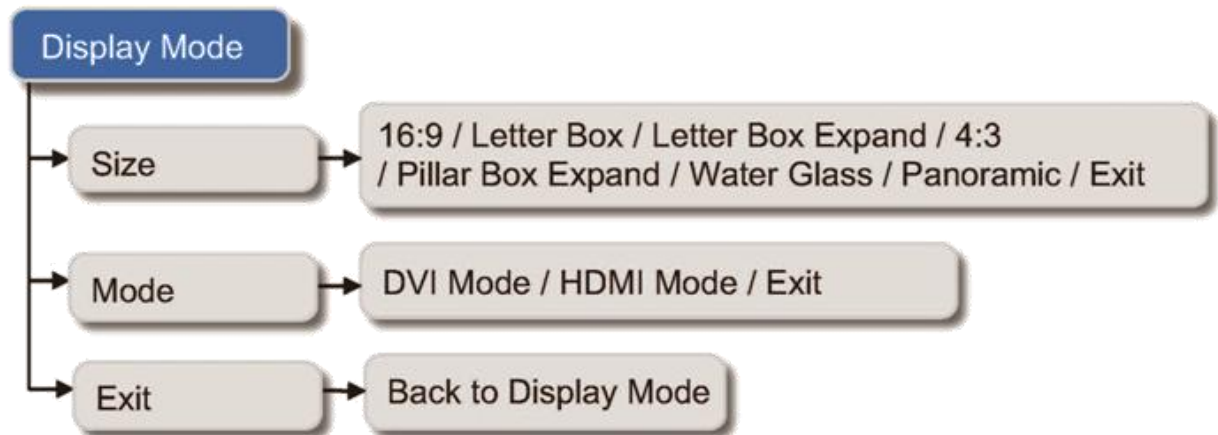
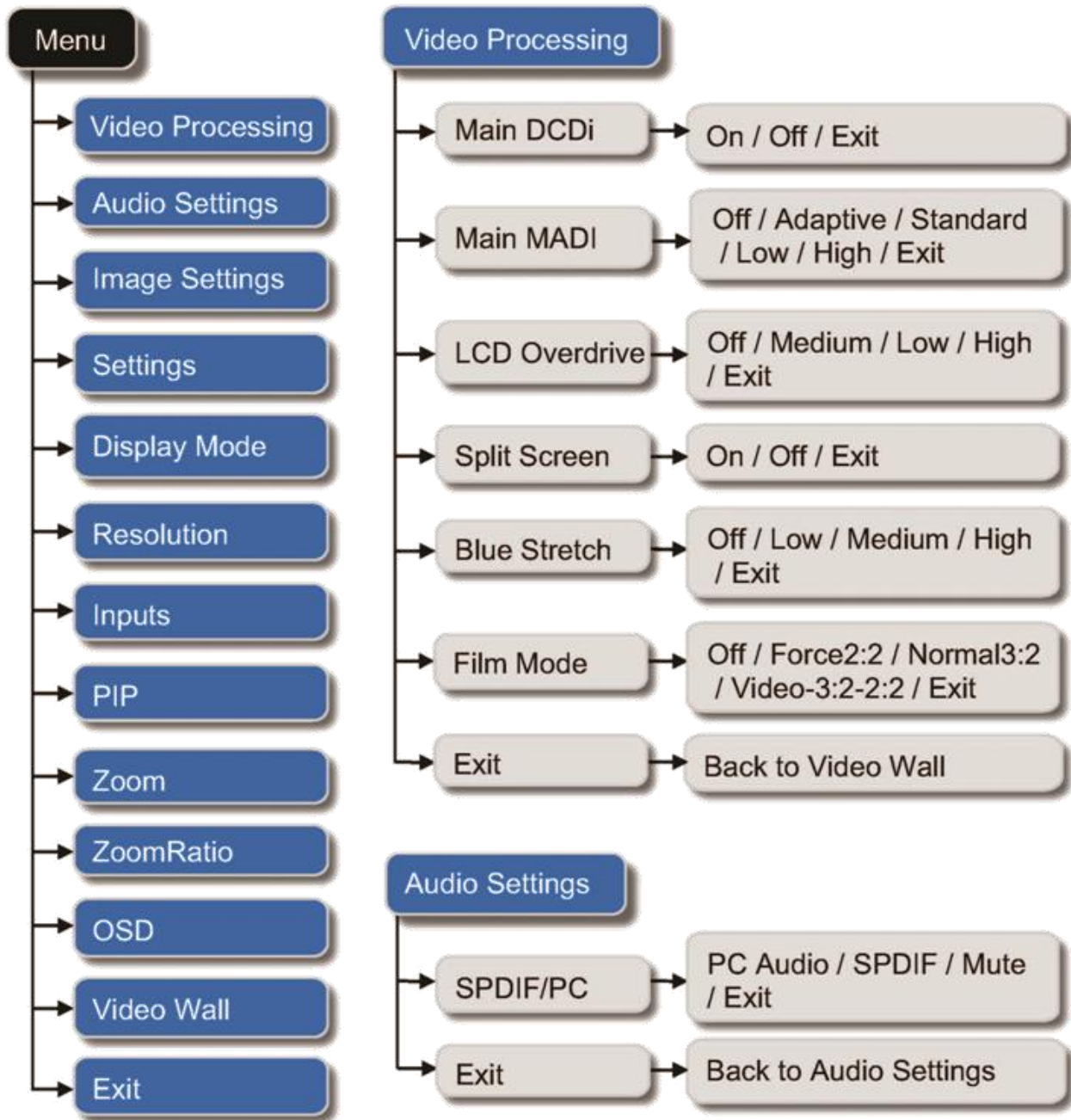


Image Settings



Settings



Resolution

800x600@60 / 1024x768@60 / 1280x1024@60
/ 1280x720@60 / 1366x768@60 / 1440x900@60
/ 1400x1050@60 / 1920x1080@60
/ 1920x1200@60 / 1600x1200@60

Exit

Back to Resolution

Inputs

VGA / VIDEO1 / SVIDEO1
/ CMPT1 / HDMI(DVI) / Exit

PIP

PIP Mode

No PIP / Large PIP / Small PIP
/ Side-By-Side / Exit

PIP Position

UpLeft / UpRight / DownLeft
/ DownRight / Exit

Inputs

VGA / VIDEO1 / SVIDEO1
/ CMPT1 / HDMI(DVI) / Exit

Blend

PIP Blend Level 0~100

Exit

Back to PIP

Zoom

ZoomInV

Zoom in by Vertical

ZoomInH

Zoom in by Horizontal

ZoomOutV

Zoom out by Vertical

ZoomOutH

Zoom out by Horizontal

Exit

Back to Zoom

ZoomRatio

Zoom Ratio 50~133% only works on Main Full Screen

OSD

Hpos

OSD Horizontal position

Vpos

OSD Vertical position 0~100

Blend

OSD Blend Level 0~15

OSDTime

OSD Existing Time 7~60 (sec)

Exit

Back to OSD (sec)

Video Wall

Divide H by

Divide Horizontal by 1~10

Divide V by

Divide Vertical by 1~10

Position

Select Position from 1~H*V

Masking in Left

Masking in Left -128~127

Masking in Right

Masking in Right -128~127

Masking in Upper

Masking in Upper 128~127

Masking in Bottom

Masking in Bottom 128~127

Exit

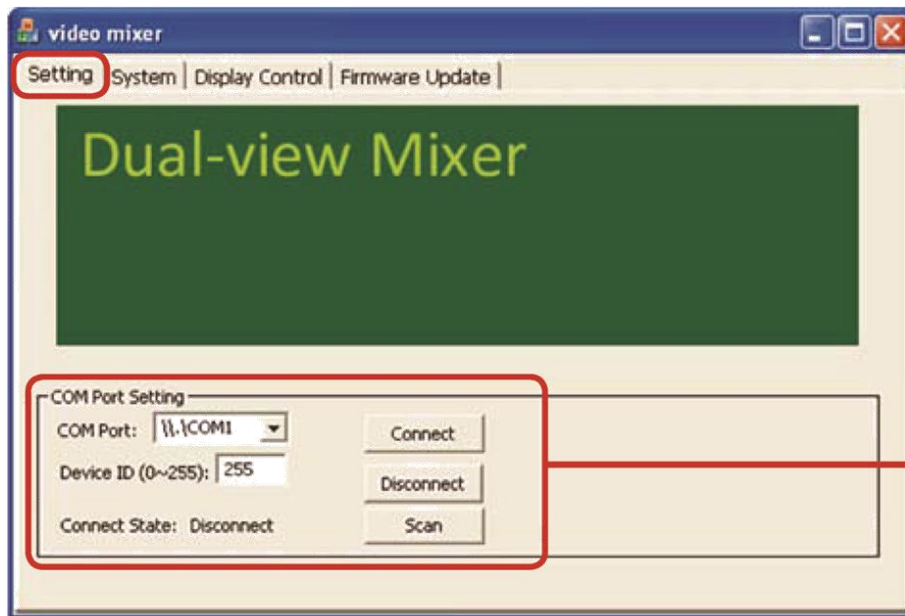
Back to Video Wall

Exit

Exit menu

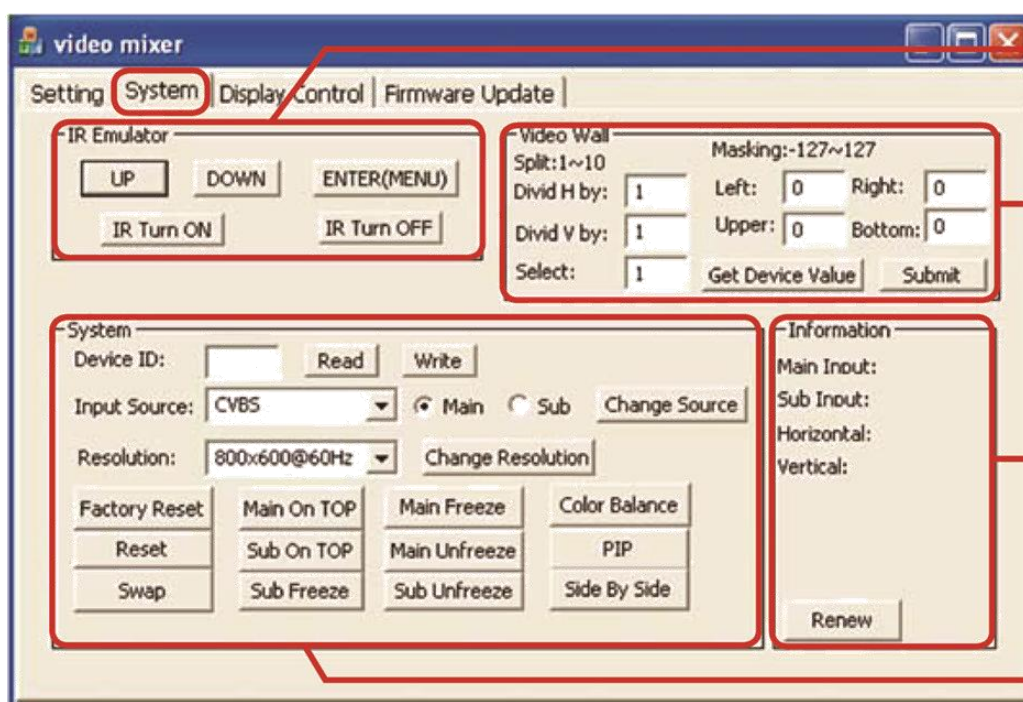
SOFTWARE PROCEDURE

1. Setting



Select the correct ComPort connected to the device. Push "Scan" to start the automatic scan on each.

2. System



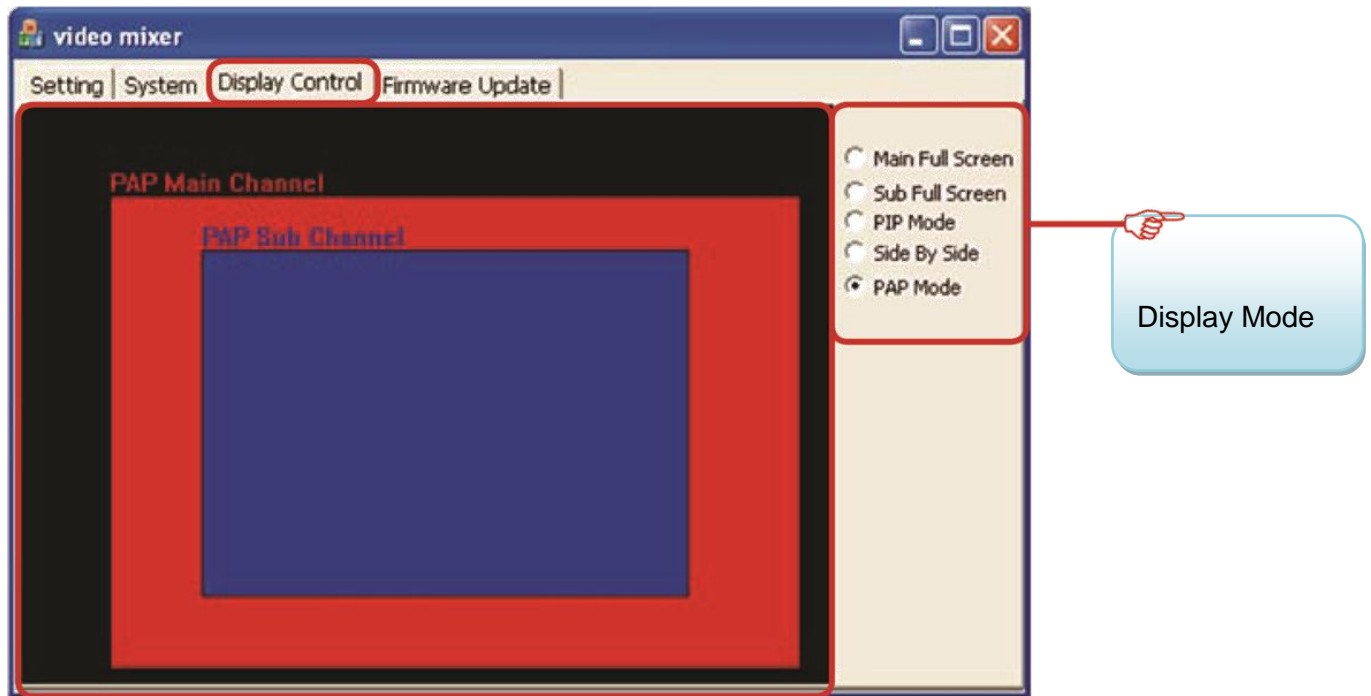
IR Simulation

Cutting Function

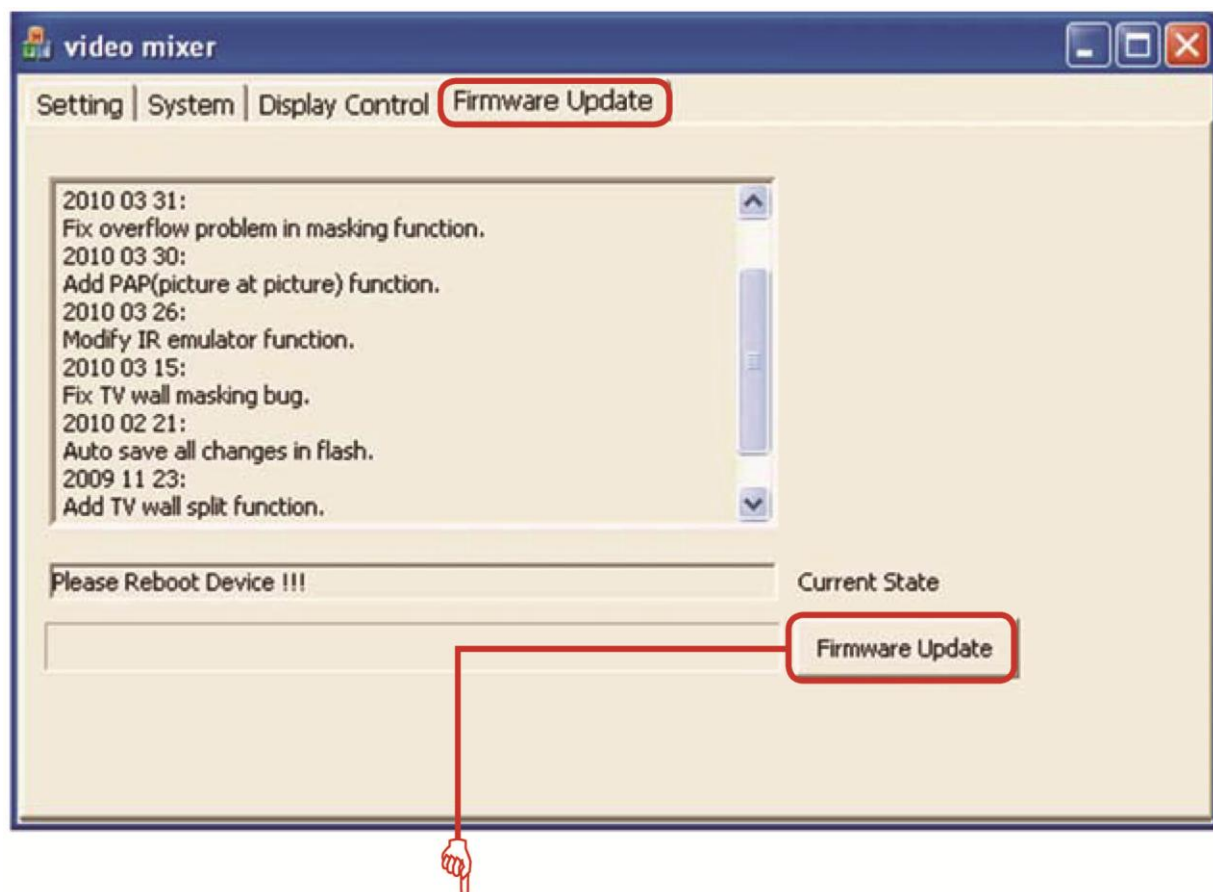
Update the status from the device to software.

Main Function

3. Display Control

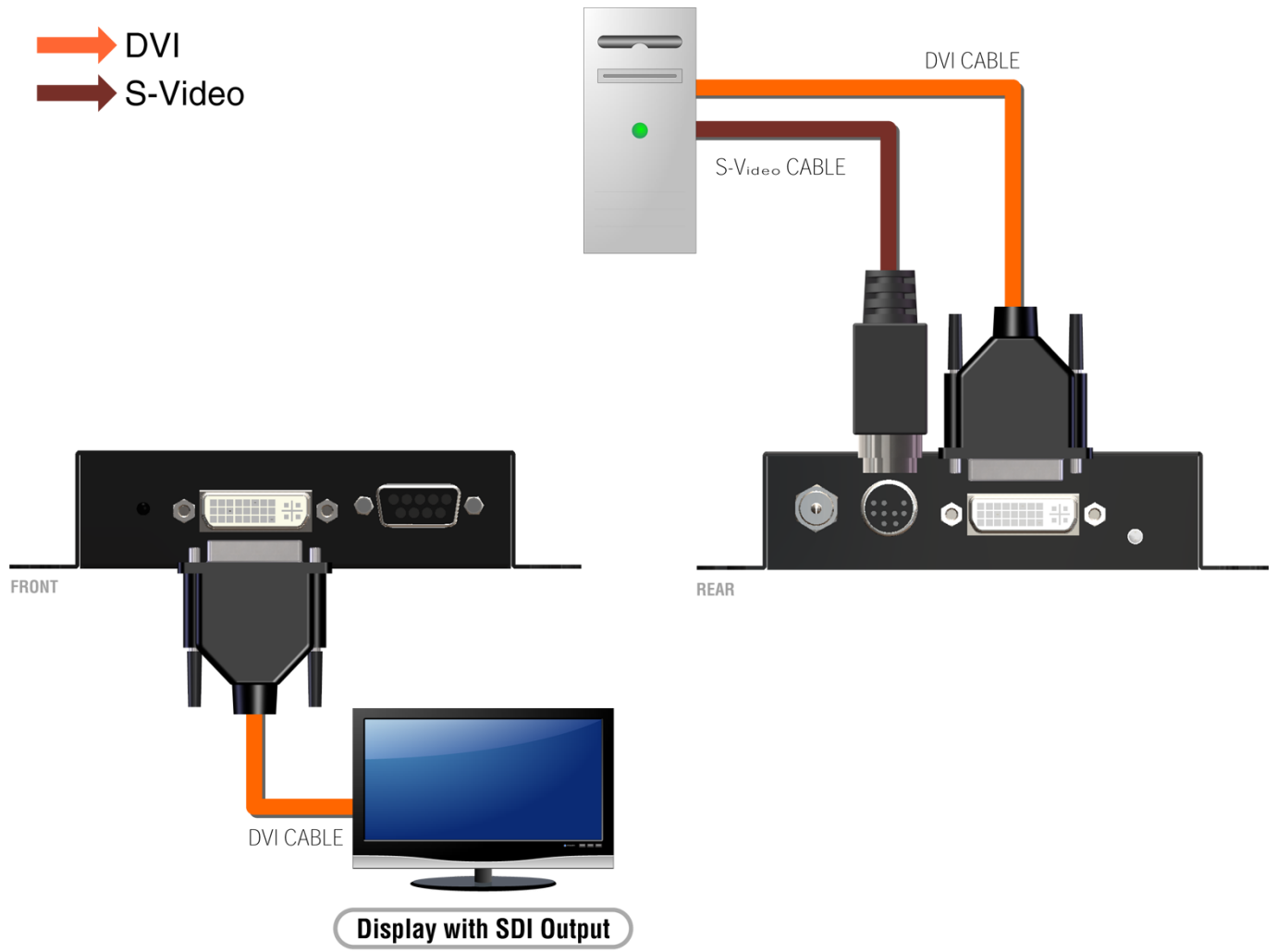


4. Firmware Update



1. Press this button first
2. Reboot the device to proceed firmware updating
3. Reboot the device again

CONNECTION DIAGRAM



WARRANTY

The SELLER warrants the **AV-GM01Q3-S1 Dual-View Universal Video to DVI-I scaler** free from defects in the material and workmanship for 3 years from the date of purchase from the SELLER or an authorized dealer. Should this product fail to be in good working order within 3 years warranty period, The SELLER, at its option, repair or replace the unit, provided that the unit has not been subjected to accident, disaster, abuse or any unauthorized modifications including static discharge and power surge. This warranty is offered by the SELLER for its BUYER with direct transaction only. This warranty is void if the warranty seal on the metal housing is broken.

Unit that fails under conditions other than those covered will be repaired at the current price of parts and labor in effect at the time of repair. Such repairs are warranted for 90 days from the day of reshipment to the BUYER. If the unit is delivered by mail, customers agree to insure the unit or assume the risk of loss or damage in transit. Under no circumstances will a unit be accepted without a return authorization number.

The warranty is in lieu of all other warranties expressed or implied, including without limitations, any other implied warranty or fitness or merchantability for any particular purpose, all of which are expressly disclaimed. Proof of sale may be required in order to claim warranty. Customers outside Taiwan are responsible for shipping charges to and from the SELLER. Cables and power adapters are limited to a 30 day warranty and must be free from any markings, scratches, and neatly coiled. The content of this manual has been carefully checked and is believed to be accurate. However,

The SELLER assumes no responsibility for any inaccuracies that may be contained in this manual. The SELLER will NOT be liable for direct, indirect, incidental, special, or consequential damages resulting from any defect or omission in this manual, even if advised of the possibility of such damages. Also, the technical information contained herein regarding the **AV-GM01Q3-S1** features and specifications is subject to change without further notice

Support

For more info or tech support
<http://www.siig.com/support>