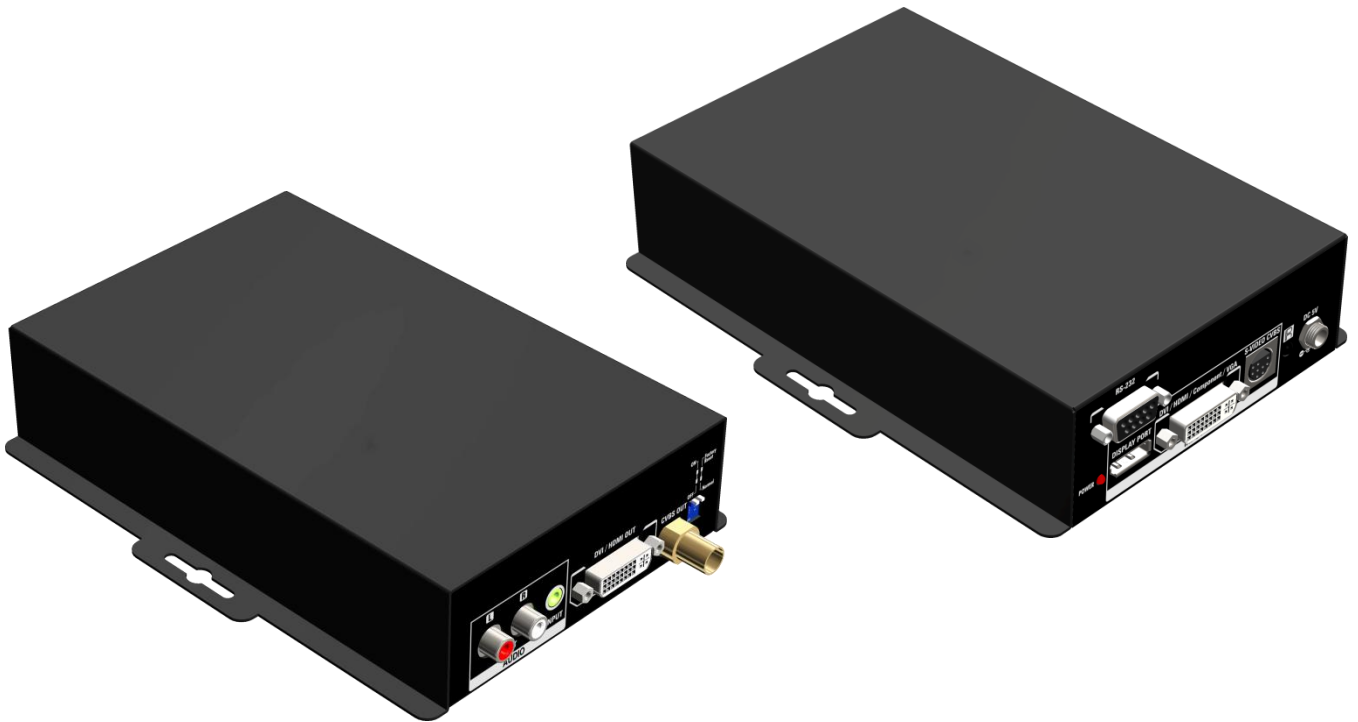




Universal Video Format to HDMI Converter



P/N: AV-GM01U3-S1



Safety and Notice

The **AV-GM01U3-S1 Universal Video Format to HDMI Converter** has been tested for conformance to safety regulations and requirements, and has been certified for international use. However, like all electronic equipments, the AV-GM01U3-S1 should be used with care. Please read and follow the safety instructions to protect yourself from possible injury and to minimize the risk of damage to the unit.

- Follow all instructions and warnings marked on this unit.
- Do not attempt to service this unit yourself, except where explained in this manual.
- Provide proper ventilation and air circulation and do not use near water.
- Keep objects that might damage the device and assure that the placement of this unit is on a stable surface.
- Use only the power adapter and power cords and connection cables designed for this unit.
- Do not use liquid or aerosol cleaners to clean this unit. Always unplug the power to the device before cleaning.



TABLE OF CONTENTS

INTRODUCTION	1
FEATURES.....	1
PACKAGE CONTENTS.....	1
SPECIFICATIONS	2
IR REMOTE CONTROL.....	3
PANEL DESCRIPTIONS	5
HARDWARE INSTALLATION.....	6
NOTICE	6
SOFTWARE PROCEDURE	7
CONNECTION DIAGRAM	8
WARRANTY	9

INTRODUCTION

The **AV-GM01U3-S1 Universal Video Format to HDMI Converter** offers the highest compatibility among composite, component, DVI, Display Port, VGA, HDMI and S-Video to VGA and DVI in the market. This unique device supports analog and digital conversion and scaling without loss of quality. With the embedded advanced de-interlacer, interlaced video inputs, such as component, composite and S-Video, can be further improved. AV-GM01U3-S1 can convert HDMI audio stream to analog audio output and also supports the insertion of stereo analog audio inputs into HDMI output with local duplicated outputs! With this advanced feature, users can combine asynchronous video and audio sources into the state-of-art HDMI compliant A/V signal for further long range lossless transmission and high standard A/V experience!

AV-GM01U3-S1 is designed to ease the conversion among the available video formats to the common VGA, DVI and even HDMI with affordable cost. With AV-GM01U3-S1, the bothersome video format issues will not become a bottleneck in your applications and the handy audio support can make the input video and audio become HDMI ready. With versatile IR remote control and push buttons, AV-GM01U3-S1 offers a very easy way to convert, switch, adjust videos at your convenience. With PIP and PAP support, users can display two video inputs at the same time!

FEATURES

- HDMI 1.3, HDCP 1.1 and DVI 1.0 compliant
- Display Port 1.1 support
- Scales up and down VESA compliant formats (VGA and DVI)
- Scales SD/ED/HD video inputs to VESA compliant formats
- PIP and PAP support
- Advanced video processing supports: noise reduction, color management, fleshtone control, dynamic contrast control, closed caption support for CVBS, 3-D de-interlacing, 3:2/2:2 pull down detection and recovery.
- Analog stereo audio support for HDMI audio
- Ability to convert HDMI audio to analog audio out
- RS-232 Firmware upgradable to guarantee the functionality revised.
- Equivalent to 6x1 video switch (HDMI ,VGA ,Component, Display Port ,CVBS, S-Video)
- Video output supports up to WUXGA, UXGA or 1080p
- HDMI compliant output
- Versatile IR control

PACKAGE CONTENTS

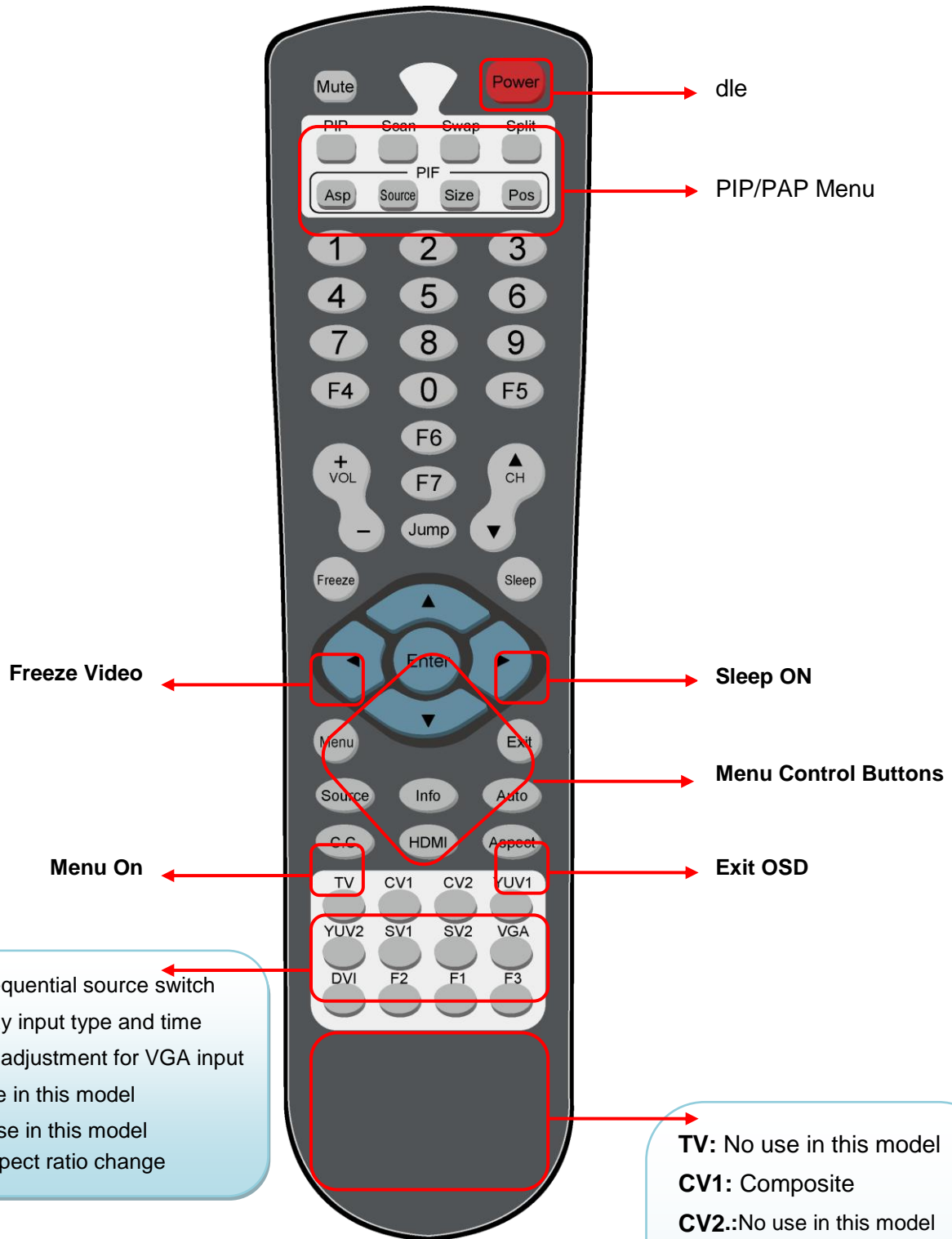
- 1 × AV-GM01U3-S1
- 1 × DC 5V 4A in-line with C7 power cord
- 1 × VGA to component breakout cable
- 1 × Composit&S-video breakout cable
- 1 × DVI to VGA adapter
- 1 × IR Remote control
- 1 × Installation software CD
- 1 × User Manual

SPECIFICATIONS

Model Name	AV-GM01U3-S1	
Technical		
HDMI&HDCP Compliance	HDMI 1.3 & HDCP 1.1	
Digital video bandwidth	6.75Gbps	
Analog video bandwidth	165MHz [Single Link]	
Analog audio bandwidth	N/A	
Maximum resolution	1080p60 / 1920x1200@60	
Max. TMDS input clock	165MHz	
Max. output pixel clock	165MHz	
Input TMDS signal	1.2 Volts [peak-to-peak]	
Input DDC signal	5 Volts [peak-to-peak, TTL]	
Input	1x DVI(HDMI) + 1xCVBS + 1xS-Video + 1xVGA + 1xYPbPr + 1xDVI +1xDisplay Port+1xRS-232	
Output	1x DVI(HDMI)+1xCVBS	
PIP / PAP	YES	
Audio support	Stereo (24 bit ADC)	
S/PDIF support	N/A	
ESD protection	[1] Human body model — ±19kV [air-gap discharge] & ±12kV [contact discharge] [2] Core chipset — ±2kV	
PCB stack-up	6-layer board [impedance control — differential 100Ω; single 50Ω]	
IR remote control	Electro-optical characteristics: $\tau = 25^\circ$ / Carrier frequency: 38kHz	
DVI connector	DVI-I [29-pin female]	
RS-232 connector	DE-9 [9-pin D-sub female]	
RCA connector	9 pin S-Video, CVBS, and S/PDIF	
3.5mm connector	Earphone jack for analog stereo audio or IR cable	
DIP switch	Restore default	
Mechanical		
Housing	Metal enclosure	
Dimensions [L x W x H]	Model	193.6 x 146.2 x 44mm [4.9" x 6.5" x 1.6"]
	Package	330 x 200 x 95mm [1'1" x 7.9" x 3.7"]
	Carton	495 x 440 x 380mm [1'8" x 1'5" x 1'3"]
Weight	Model	485g [1.1 lbs]
	Package	1360g [3.1 lbs]
Fixedness	Wall-mounting case with screws	
Power supply	Interlocked 5V 4A DC	
Power consumption	10 Watts [max]	

Operation temperature	0~40°C [32~104°F]
Storage temperature	-20~60°C [-4~140°F]
Relative humidity	20~90% RH [no condensation]

IR REMOTE CONTROL



Source: Sequential source switch
Info: Display input type and time
Auto: Auto adjustment for VGA input
C.C.: No use in this model
HDMI: No use in this model
Aspect: Aspect ratio change

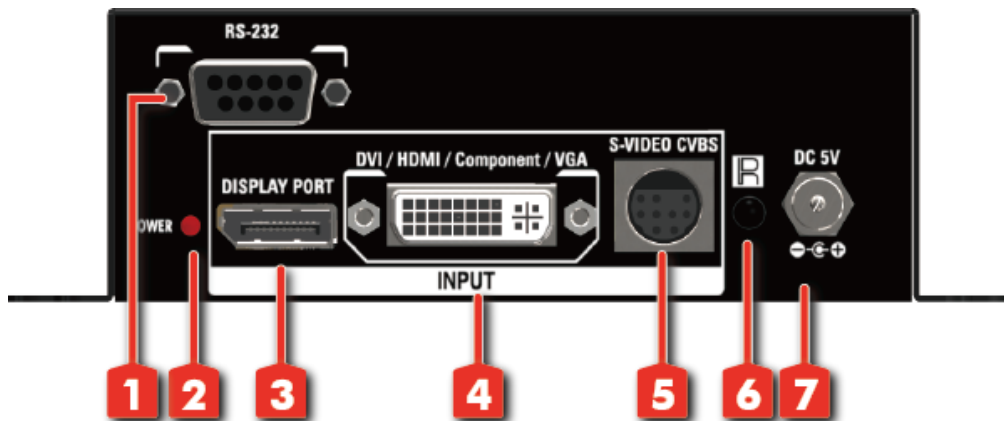
TV: No use in this model
CV1: Composite
CV2: No use in this model
YUV1: No use in this model
YUV2: No use in this model
SV1: S-Video
SV2: No use in this model
VGA: VGA



The buttons not listed above are not in use for this model.

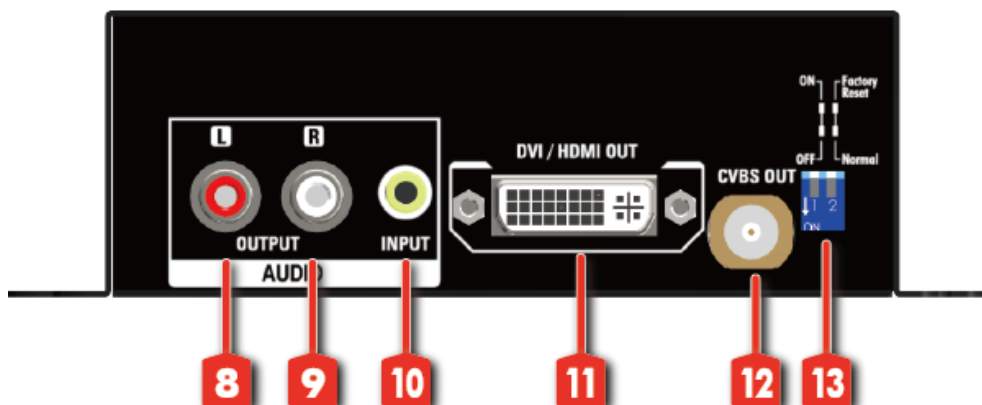
PANEL DESCRIPTIONS

Front Panel



1. RS-232
2. Power Indicator
3. DISPLAY PORT IN
4. DVI/ HDMI/ Component/ VGA IN
5. S-VIDEO/ CVBS IN
6. IR sensor
7. +5V DC

Rear Panel



8. Analog audio out-L
9. Analog audio out-R

10. Analog audio IN
11. DVI/ HDMI OUT
12. CVBS OUT
13. Dip Switch for F/W update and Factory reset

HARDWARE INSTALLATION

1. Connect your video sources to the input connectors.
2. Connect your HDMI enabled monitors into the device's HDMI output port.
3. Power up the AV-GM01U3-S1.
4. Use IR to select the input, setup the output resolution, and adjust your video format

NOTICE

1. As the video formats evolves and expands, AV-GM01U3-S1 is firmware upgradable for this fashion.
2. PIP and PAP only support digital and analog display or dual display for single input.
3. Analog stereo audio can merely support 2-channel audio. This version does NOT support 8-channel analog audio applications.

SOFTWARE PROCEDURE

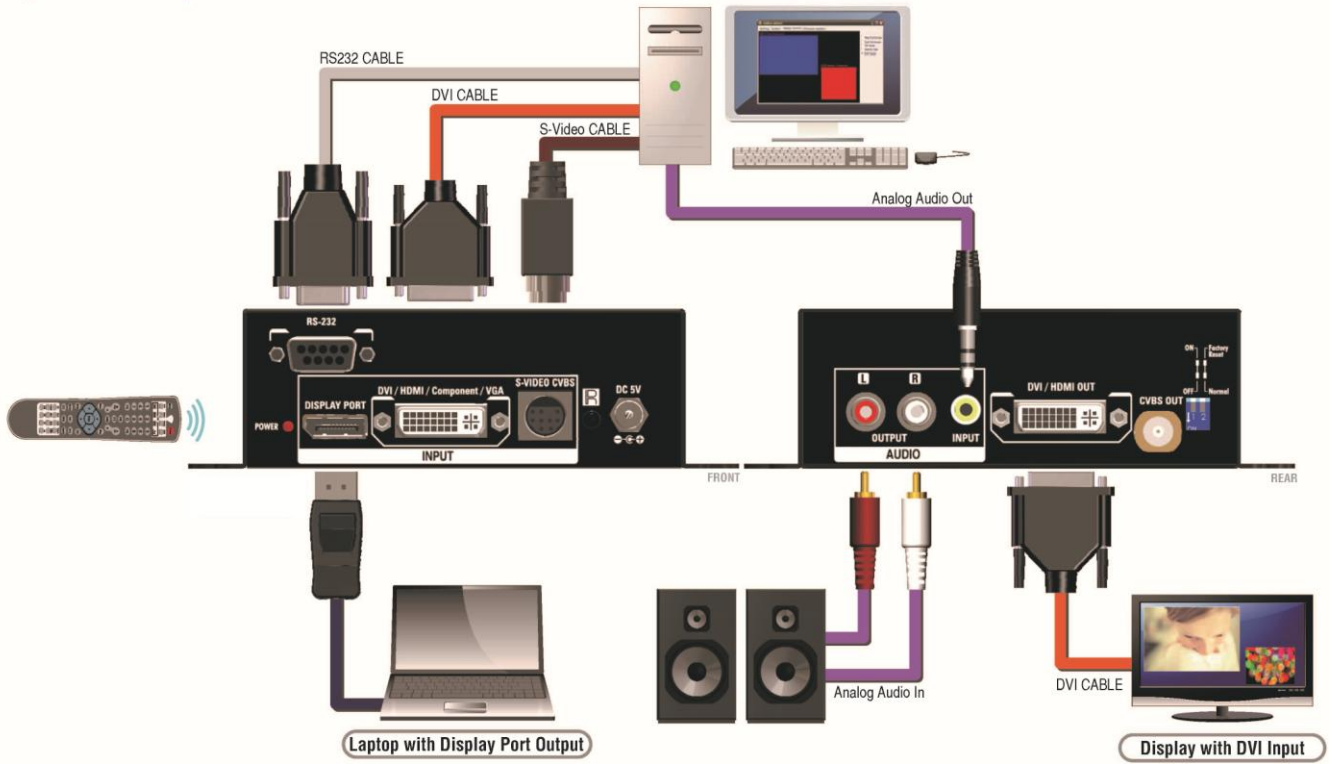
Software Interface:

COM Port Settings:
Select COM Port and push "connect" button to connect to device.
The "Scan" can automatically detect the COM that be connected and connect to it.

Firmware Update:
Click "Firmware Update" then power cycle device to upgrade firmware..

CONNECTION DIAGRAM

- DVI
- Display Port
- RS-232
- S-Video
- AUDIO



WARRANTY

The SELLER warrants the **AV-GM01U3-S1 Universal Video Format to HDMI Converter** to be free from defects in the material and workmanship for 3 years from the date of purchase from the SELLER or an authorized dealer. Should this product fail to be in good working order within 3 years warranty period, The SELLER, at its option, repair or replace the unit, provided that the unit has not been subjected to accident, disaster, abuse or any unauthorized modifications including static discharge and power surge. This warranty is offered by the SELLER for its BUYER with direct transaction only. This warranty is void if the warranty seal on the metal housing is broken.

Unit that fails under conditions other than those covered will be repaired at the current price of parts and labor in effect at the time of repair. Such repairs are warranted for 90 days from the day of reshipment to the BUYER. If the unit is delivered by mail, customers agree to insure the unit or assume the risk of loss or damage in transit. Under no circumstances will a unit be accepted without a return authorization number.

The warranty is in lieu of all other warranties expressed or implied, including without limitations, any other implied warranty or fitness or merchantability for any particular purpose, all of which are expressly disclaimed.

Proof of sale may be required in order to claim warranty. Customers outside Taiwan are responsible for shipping charges to and from the SELLER. Cables are limited to a 30 day warranty and cable must be free from any markings, scratches, and neatly coiled.

The content of this manual has been carefully checked and is believed to be accurate. However, The SELLER assumes no responsibility for any inaccuracies that may be contained in this manual. The SELLER will NOT be liable for direct, indirect, incidental, special, or consequential damages resulting from any defect or omission in this manual, even if advised of the possibility of such damages. Also, the technical information contained herein regarding the AV-GM01U3-S1 features and specifications is subject to change without further notice

Support

For more info or tech support
<http://www.siig.com/support>

April, 2018