



HDMI 4x1 Seamless Switcher with Quad-view support



P/N: AV-GM09O3-S1



Safety and Notice

The **AV-GM0903-S1 HDMI 4x1 Seamless Switcher with Quad-view support** has been tested for conformance to safety regulations and requirements, and has been certified for international use. However, like all electronic equipments, the **AV-GM0903-S1** should be used with care. Please read and follow the safety instructions to protect yourself from possible injury and to minimize the risk of damage to the unit.

- Follow all instructions and warnings marked on this unit.
- Do not attempt to service this unit yourself, except where explained in this manual.
- Provide proper ventilation and air circulation and do not use near water.
- Keep objects that might damage the device and assure that the placement of this unit is on a stable surface.
- Use only the power adapter and power cords and connection cables designed for this unit.
- Do not use liquid or aerosol cleaners to clean this unit. Always unplug the power to the device before cleaning.



TABLE OF CONTENTS


INTRODUCTION.....	1
FEATURES.....	1
PACKAGE CONTENTS	1
SPECIFICATIONS	2
PANEL DESCRIPTIONS.....	3
CONNECTION DIAGRAM	4
OPERATION APPROACH	5
WARRANTY	14

INTRODUCTION

The AV-GM09O3-S1 [HDMI 4x1 Seamless Switcher with Quad-view support](#) provides the most flexible and cost effective solution in the market to route high definition video source from one of the four HDMI sources to the remote display in real time. This solution can be utilized in digital signage, conference room presentation systems or other similar applications. In addition,

With 1080p output resolution, users can display the resulted mixed video with improved presentation quality. In the meantime, the unit can be controlled thru the IR remote control, front panel button, software control or cloud control to provide the most flexible control way to fit into any applications.

FEATURES

- 4x HDMI inputs and 1x HDMI output
- Input resolution support from 640x480 to 1920x1200, interlaced or progressive
- Output resolution supports up to 1920x1080
- Supports seamless switching
- Supports HDCP 1.4
- Firmware upgradable for support of new features and technology enhancements
- Supports IR remote control
- The output display is forced to  layout
- This switcher can control by RS-232, push button, IR remote control and cloud control*



*Cloud support is thru an encrypted communication to provide the best private protection when using AV-GM09O3-S1

PACKAGE CONTENTS

- 1x AV-GM09O3-S1
- 1x DC 12V 5A
- 1x Installation software CD
- 1x User Manual
- 1x IR Remote control (28 keys)
- 1x IR Receiving cable

SPECIFICATIONS

Model Name		AV-GM0903-S1
Technical		
Role of usage		Seamless Switcher
HDCP compliance		HDCP 1.4
Video bandwidth		6.75Gbps
Input Video Support		Up to 1920x1200@60
Output Video Support		720p60, 1080i60, 1080p60
Audio support		Bypass
Control		Software / Front Panel / IR Remote Control / Cloud Control
Input TMDS signal		1.2 Volts [peak to peak]
ESD protection		Human body model — ±15kV [air-gap discharge] & ±8kV [contact discharge]
Input		4x HDMI + 1x RS-232 + 1x Ethernet
Output		1x HDMI + 1x 3.5mm(Stereo)
HDMI connector		Type A [19-pin female]
RJ-45 connector		WE/SS 8P8C with 2 LED indicator
RS-232 connector		DE-9 [9-pin D-sub female]
Mechanical		
Housing		Metal enclosure
Dimensions [L x W x H]	Model	312 x 143 x 27mm [1' x 5.6" x 1"]
	Package	376 x 240 x 112mm [1'2" x 9.4" x 4.4"]
	Carton	590 x 510 x 405mm [1'9" x 1'7" x 1'3"]
Weight	Model	808g [4.6oz]
	Package	1385g [3lbs]
Power supply		12V 5A DC
Power consumption		10 W
Operation temperature		0~40°C [32~104°F]
Storage temperature		-20~60°C [-4~140°F]
Relative humidity		20~90% RH [no condensation]

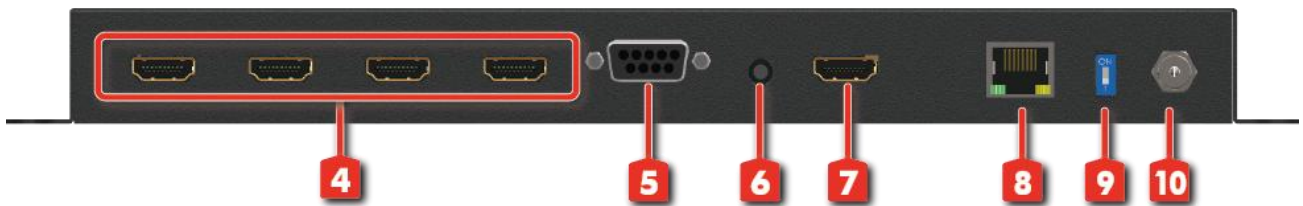
PANEL DESCRIPTIONS

Front Panel



1. **Input Selection Button:** Input 1~4 source selection (from the left to the right is input 1, input 2, input 3, input 4). If you press the input 1 button about 5 seconds, the output layout will change to Quad-view mode (⌘).
2. **IR SENSOR:** IR sensor for receiving the IR commands from IR remote
3. **IR Receiver:** 3.5mm socket for plugging in the extension cable of IR receiver

Rear Panel

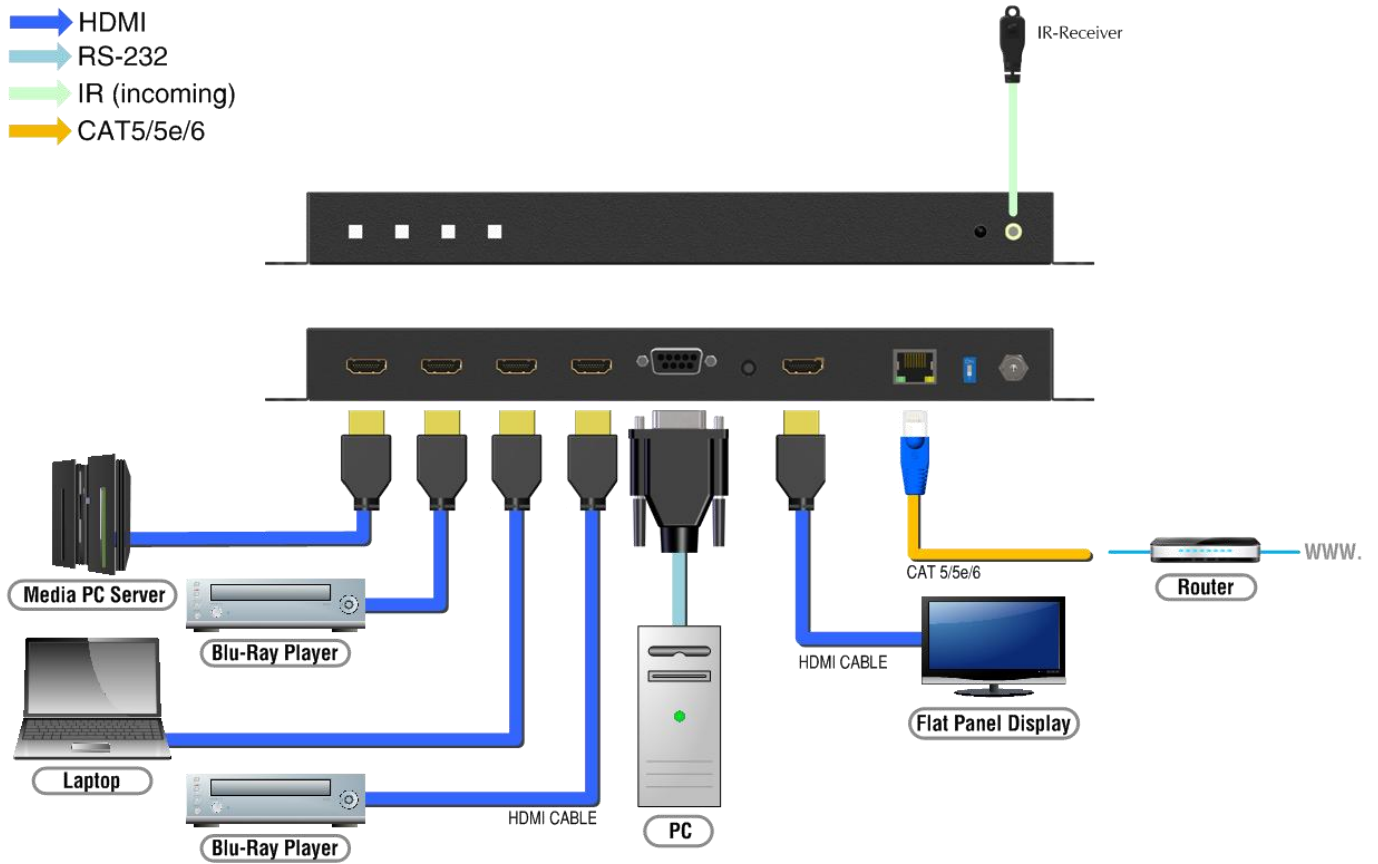


4. **Input 1-4:** HDMI inputs (from the left to the right is input 4, input 3, input 2, input 1)
5. **RS-232:** RS-232 control port
6. **Stereo Audio Out:** Connect to analog stereo audio speaker
7. **Output:** HDMI output
8. **Ethernet:** Ethernet control port
9. **Factory Reset:** Switch the pin to do factory default reset
10. **+12V DC:** 12V DC power jack



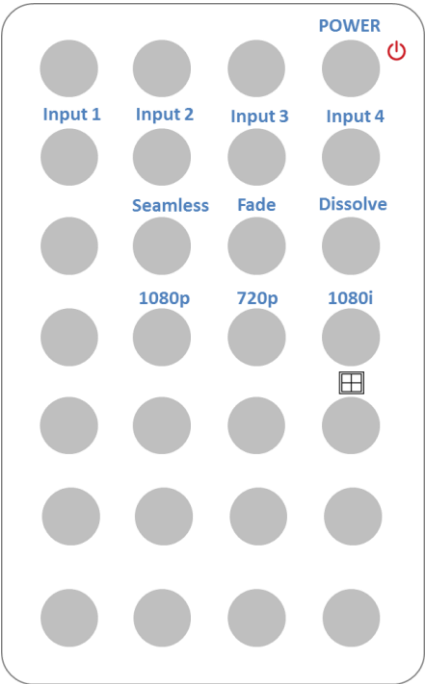
For Quad-view mode, Upper left is Input 1; Right upper is Input 2;
Lower left is Input 3; Right lower is Input 4.



CONNECTION DIAGRAM



OPERATION APPROACH

Method A: IR Remote Control



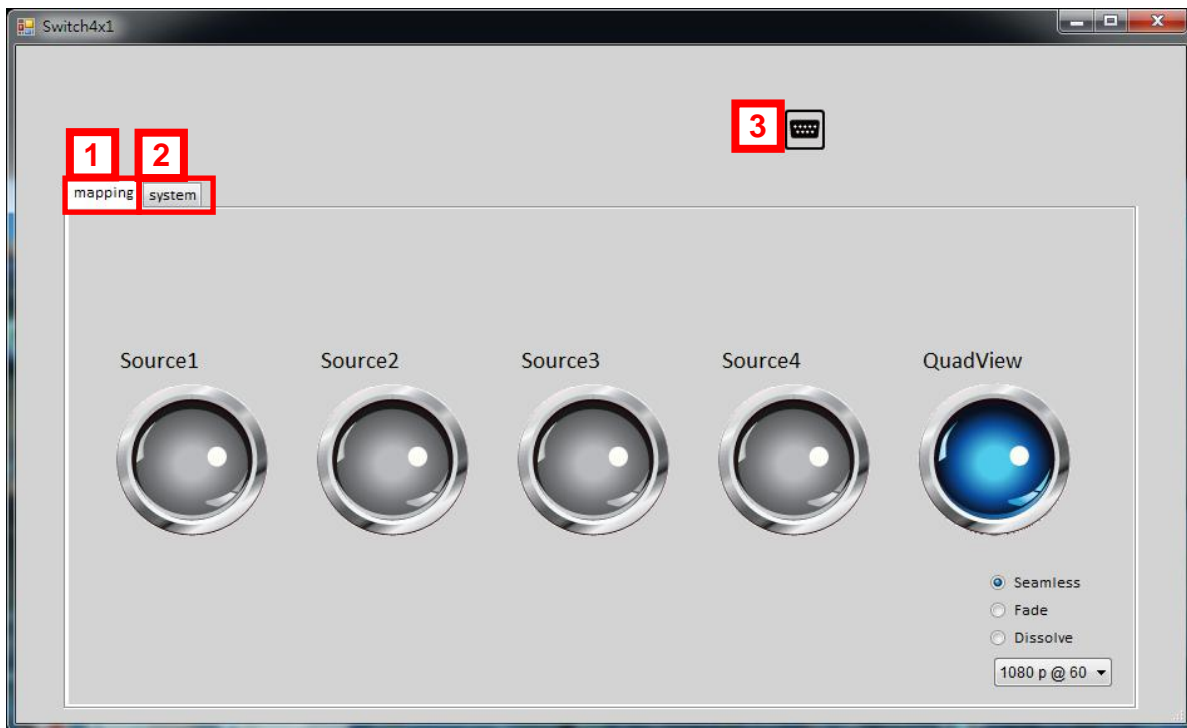
Button	Function
Power	Power on/off the device
Input 1	Select HDMI input 1 to be the input source
Input 2	Select HDMI input 2 to be the input source
Input 3	Select HDMI input 3 to be the input source
Input 4	Select HDMI input 4 to be the input source
Seamless	Seamless switching effect
Fade	Fade switching effect
Dissolve	Dissolve switching effect
1080p	Select 1080p@60 output resolution
720p	Select 720p@60 output resolution
1080i	Select 1080i@60 output resolution
	Change the output layout to 

Method B: Software Control through RS-232 port

1. System Requirement

- (1) OS information : MS Win XP/7/8/10
- (2) Baud rates: 115200
- (3) Software size: 7MB
- (4) Minimum RAM requirement: 256MB

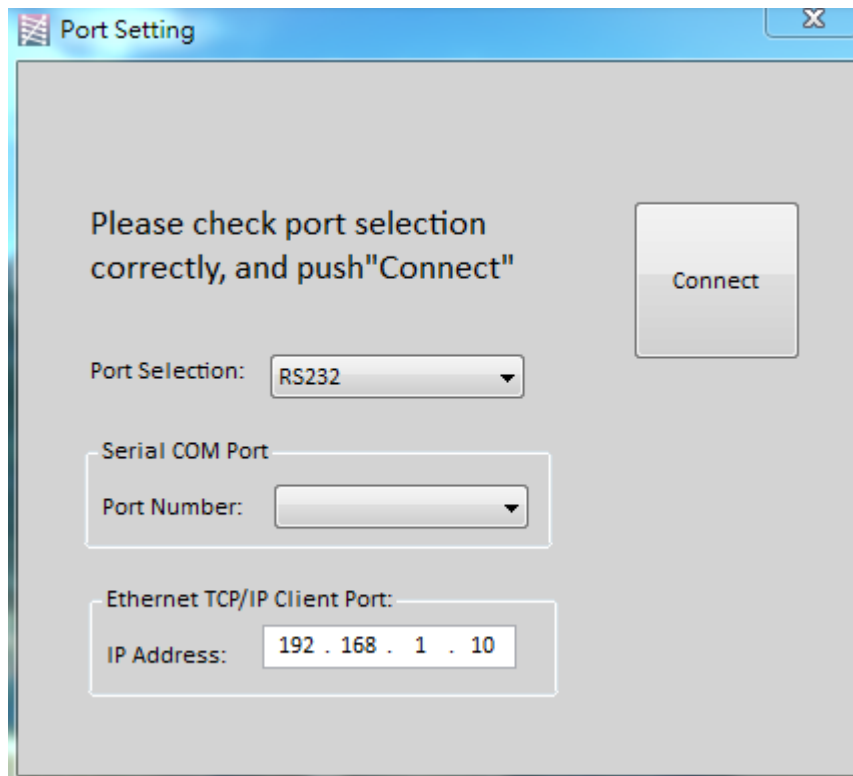
2. Control interface



1	Mapping	3	Port Setting
2	System		

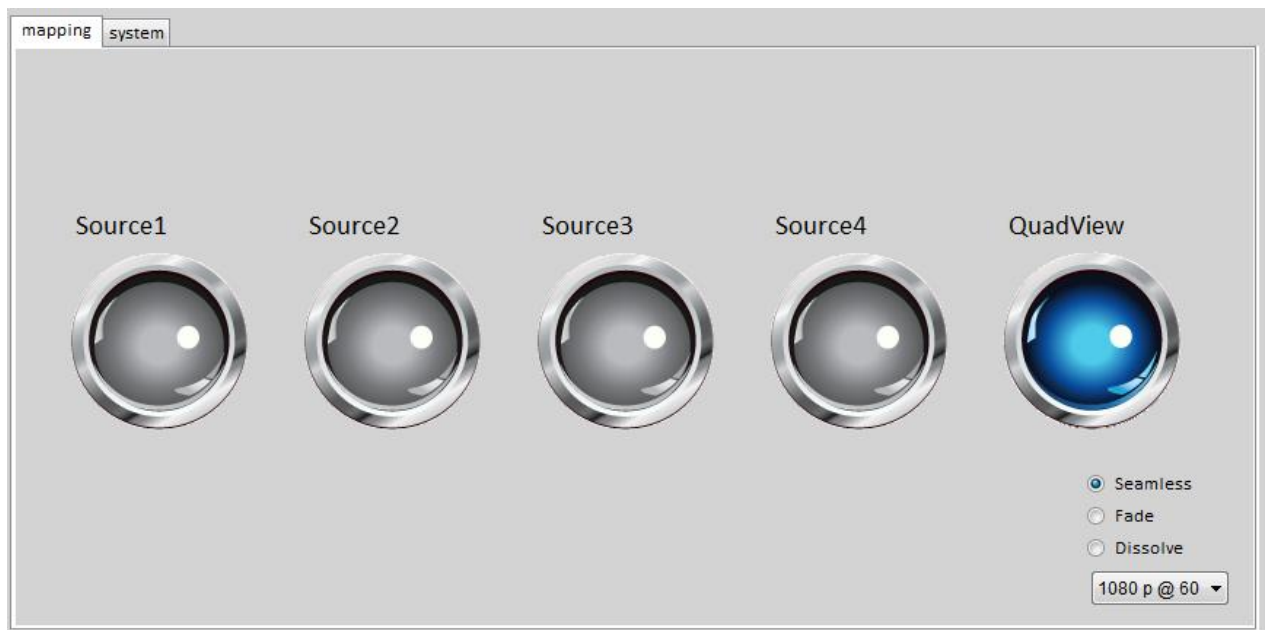
When clicking on the software control program, the following dialog will pop-up (under Microsoft Windows 7, please run as administrator).

- RS-232 serial Mode: Use RS-232 to connect the port on device and computer. Select correct COM port and click the Connect button.
- Ethernet Mode: Enter the IP address of the device and click the Connect button.

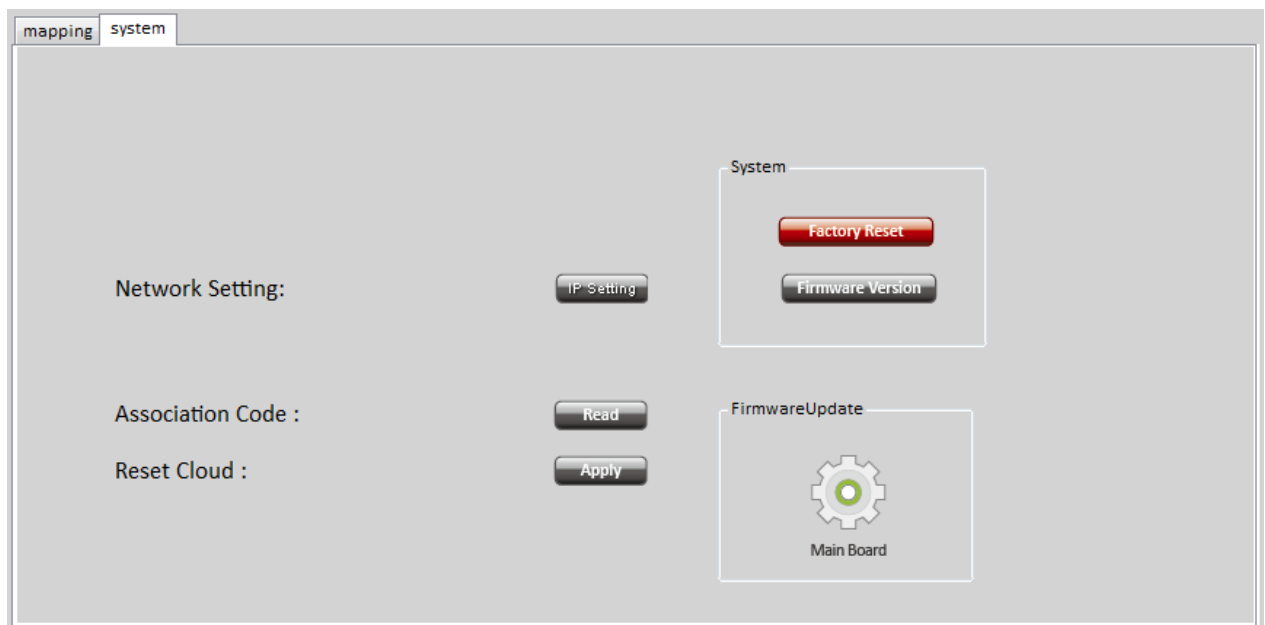


(1) Mapping

You can assign arbitrary video source here and we provides three switching effects for user select. You also can set the output resolution.

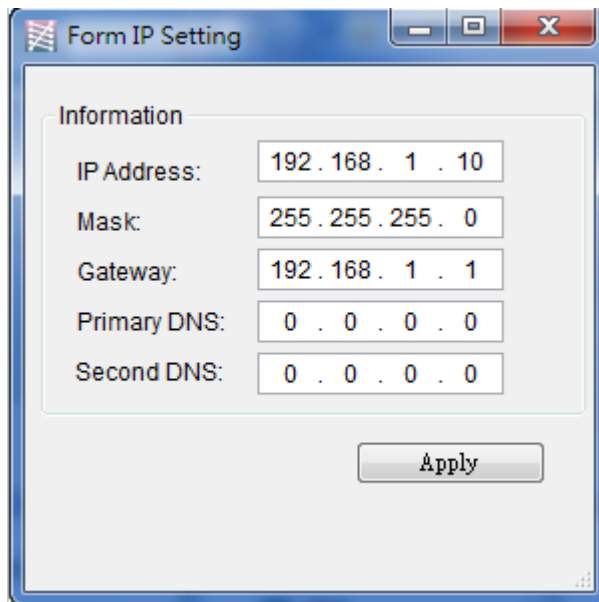


(2) System



➤ Network Setting

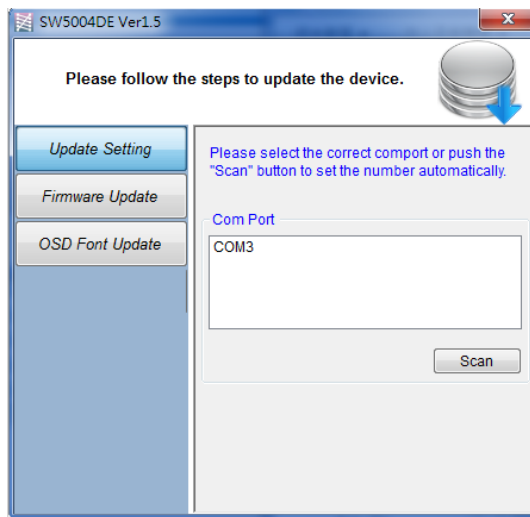
User can use the Ethernet to control the switcher. Firstly, user should click on the "IP Setting" button to setup network set. Next, users can setup the Ethernet for the unit as below example shows. After the step of IP setting, please click the "Apply" button.

A screenshot of a Windows-style dialog box titled "Form IP Setting". It contains a section labeled "Information" with five input fields: "IP Address:" (192 . 168 . 1 . 10), "Mask:" (255 . 255 . 255 . 0), "Gateway:" (192 . 168 . 1 . 1), "Primary DNS:" (0 . 0 . 0 . 0), and "Second DNS:" (0 . 0 . 0 . 0). An "Apply" button is located at the bottom right of the dialog box.

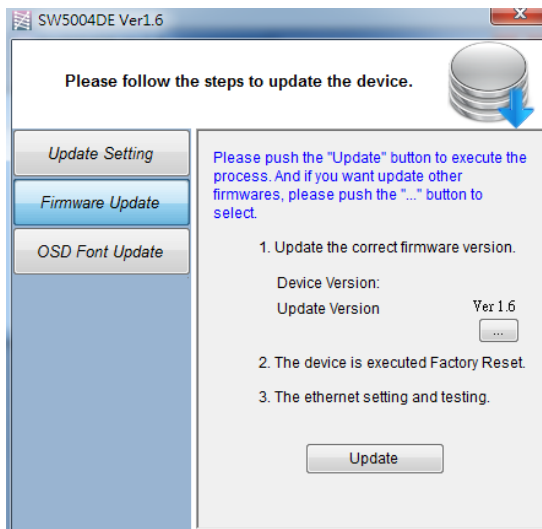
Information	
IP Address:	192 . 168 . 1 . 10
Mask:	255 . 255 . 255 . 0
Gateway:	192 . 168 . 1 . 1
Primary DNS:	0 . 0 . 0 . 0
Second DNS:	0 . 0 . 0 . 0

Apply

- Association Code
To get an "association code". The device can use this code to pair with cloud server for you can do cloud control.
- Reset Cloud
Reset the cloud server
- Factory Reset
 - Click Factory Reset button to do factory default reset.
 - The process of default reset will take about 25 seconds.
- Firmware Version
Get the firmware version information.
- Firmware Update
Firmware update device
 - Please select the correct COM port or click "Scan" button to connect device.




- Click "update" button to do firmware update.

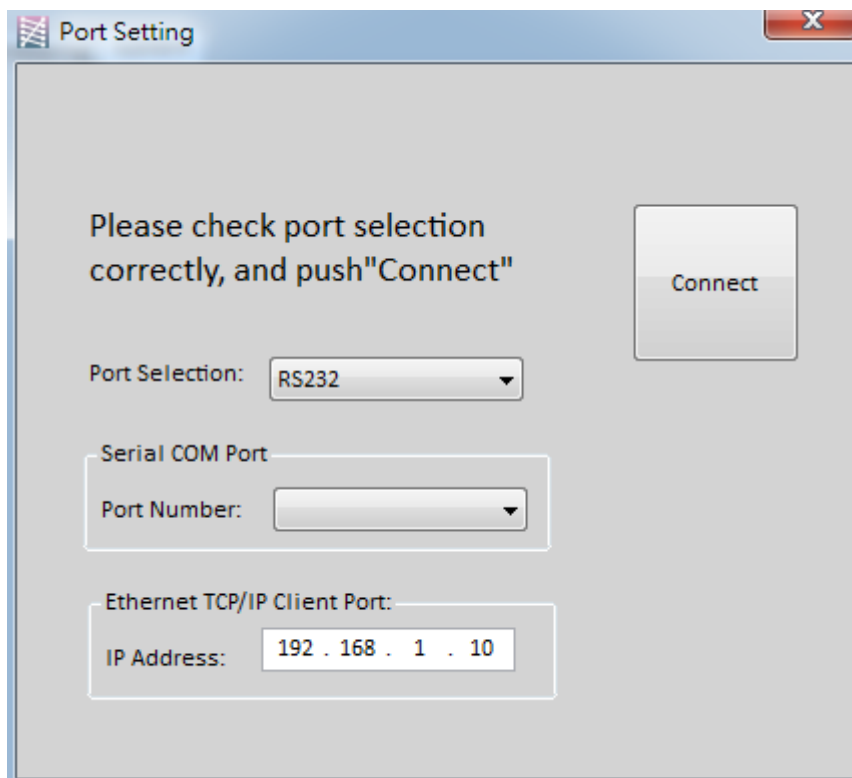


- If you want to change OSD font, please click “OSD Font Update” and “update” button to change it.



(3) Port Setting

The function can reconnect this device. You can click  button to update the control connection. A “Port Setting” window will pop up for you to select the approach to connect this device.

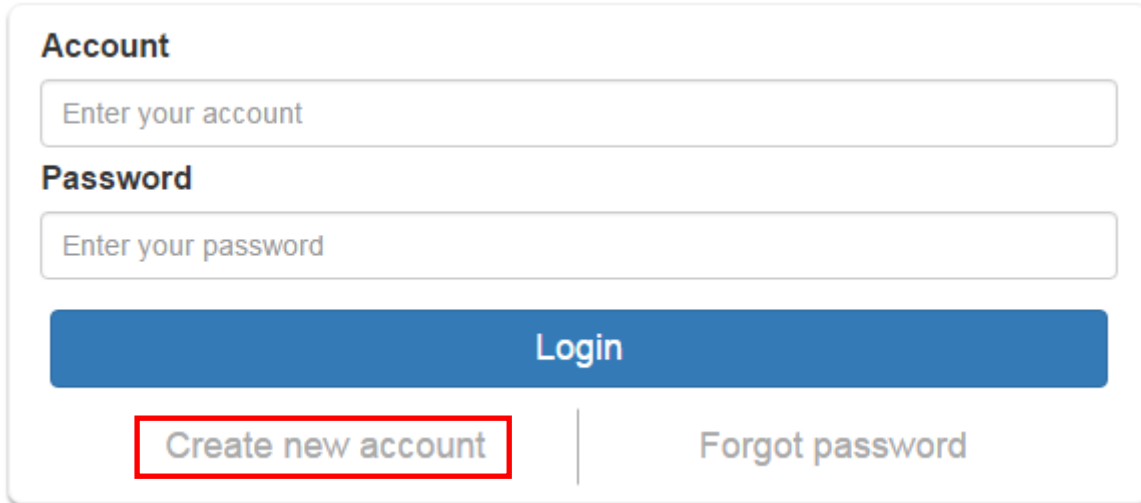


Method C: Cloud Control (Eagleyes) through Ethernet port

Create Account

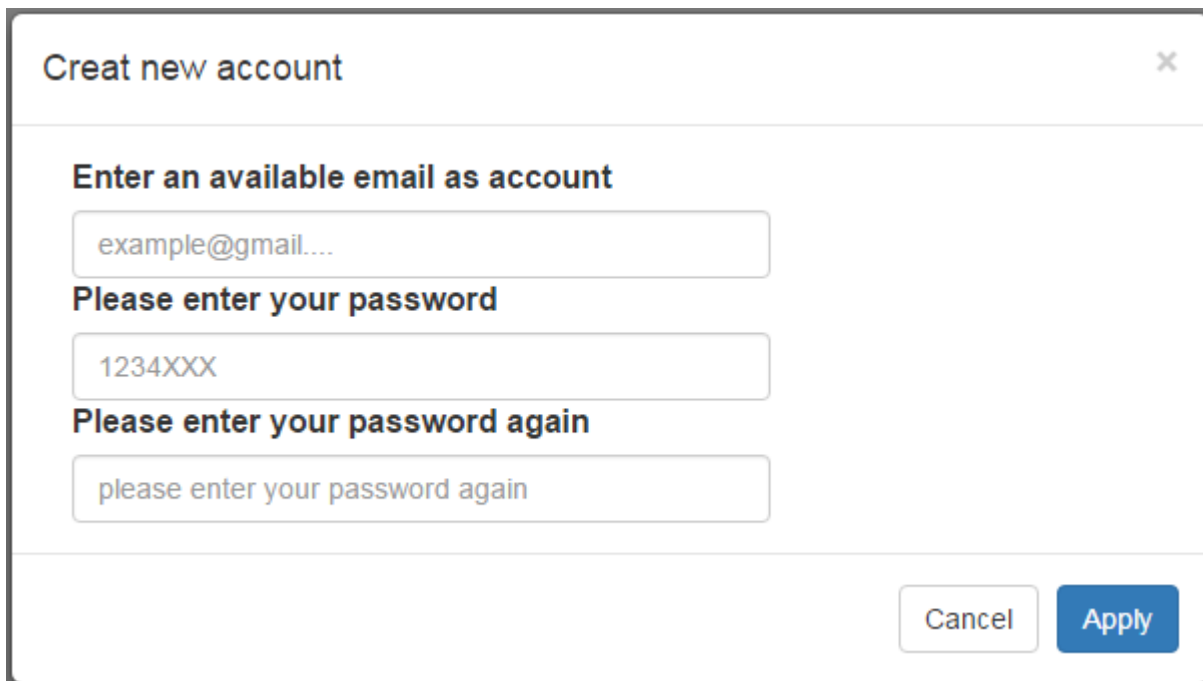
The first time to use the Eagleyes service, please create a new account.

1. Access Eagleyes (<http://www.eagleyes.io>) and click "Create new account".



The image shows a web form for logging in or creating an account. It has a title "Account" and two input fields: "Enter your account" and "Enter your password". Below these is a blue "Login" button. At the bottom, there is a red-bordered button labeled "Create new account" and a link labeled "Forgot password".

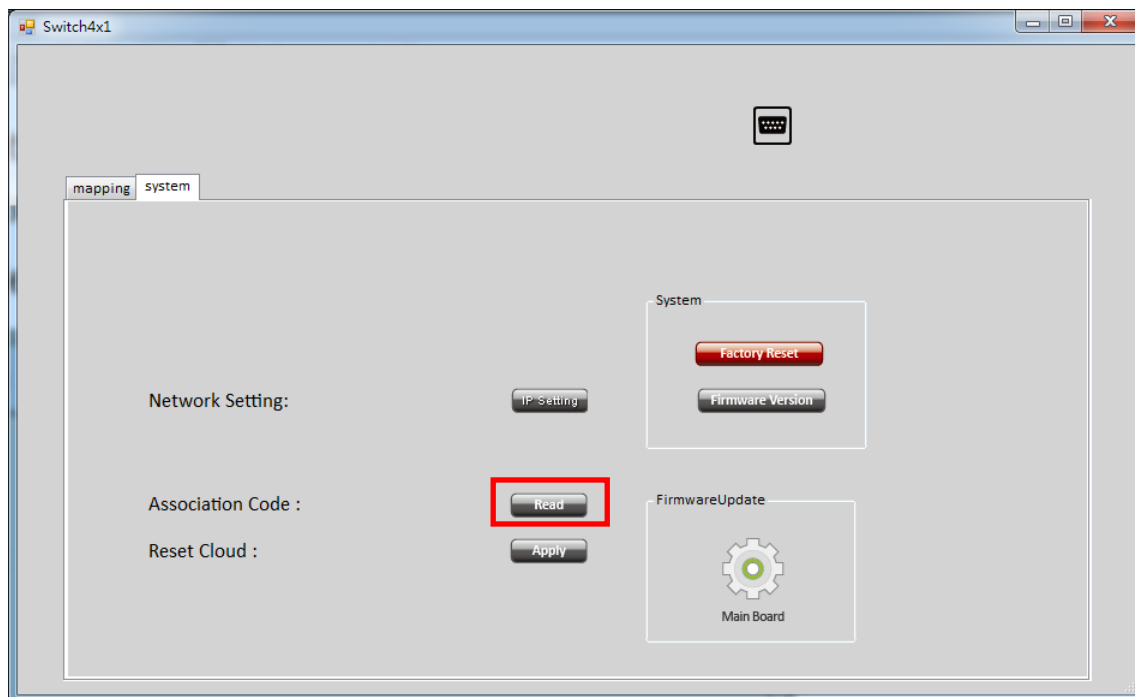
2. The Registration page will pop up and please fill in your email and password information to create your private account.



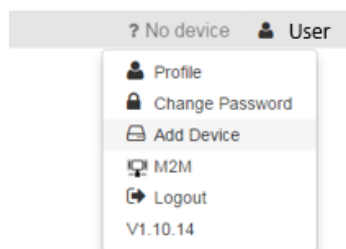
The image shows a registration form titled "Creat new account" with a close button (X) in the top right corner. It contains three input fields: "Enter an available email as account" (with placeholder "example@gmail...."), "Please enter your password" (with placeholder "1234XXX"), and "Please enter your password again" (with placeholder "please enter your password again"). At the bottom right, there are two buttons: "Cancel" and "Apply".

Add Device to Eagleyes

1. Firstly, please make sure the device is connected to the Ethernet. Then please executing the software with device to get the association code (Note: the status of software is connected).



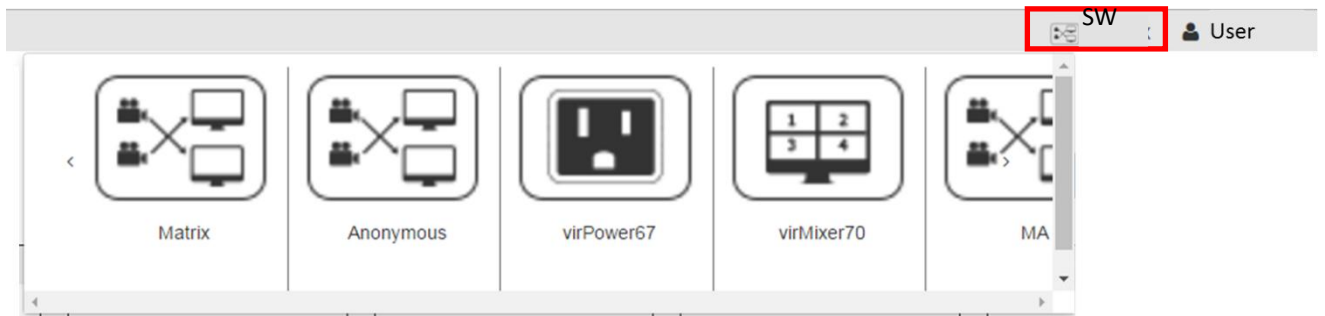
2. Access Eagleyes (<http://www.eagleyes.io>), and then log in your account on the right top corner. Click **Add device** to add the device which you just got its association code.



3. Enter the Installer Email for online support in the future, and the Association Code for pairing with your device.

A screenshot of a form titled 'Add new device'. It contains two input fields: 'Installer Email' and 'Association Code'. At the bottom right, there are two buttons: 'Close' and 'Apply'.

4. After adding the device, the list of device related to your account will show on the right top corner. You can click the button to switch device for control.



WARRANTY

The SELLER warrants the **AV-GM0903-S1 HDMI 4x1 Seamless Switcher with Quad-view support** free from defects in the material and workmanship for 3 years from the date of purchase from the SELLER or an authorized dealer. Should this product fail to be in good working order within 3 years warranty period, The SELLER, at its option, repair or replace the unit, provided that the unit has not been subjected to accident, disaster, abuse or any unauthorized modifications including static discharge and power surge. This warranty is offered by the SELLER for its BUYER with direct transaction only. This warranty is void if the warranty seal on the metal housing is broken.

Unit that fails under conditions other than those covered will be repaired at the current price of parts and labor in effect at the time of repair. Such repairs are warranted for 90 days from the day of reshipment to the BUYER. If the unit is delivered by mail, customers agree to insure the unit or assume the risk of loss or damage in transit. Under no circumstances will a unit be accepted without a return authorization number.

The warranty is in lieu of all other warranties expressed or implied, including without limitations, any other implied warranty or fitness or merchantability for any particular purpose, all of which are expressly disclaimed.

Proof of sale may be required in order to claim warranty. Customers outside Taiwan are responsible for shipping charges to and from the SELLER. Cables and power adapters are limited to a 30 day warranty and must be free from any markings, scratches, and neatly coiled.

The content of this manual has been carefully checked and is believed to be accurate. However, The SELLER assumes no responsibility for any inaccuracies that may be contained in this manual. The SELLER will NOT be liable for direct, indirect, incidental, special, or consequential damages resulting from any defect or omission in this manual, even if advised of the possibility of such damages. **Also, the technical information contained herein regarding the AV-GM0903-S1 features and specifications is subject to change without further notice.**

Support

For more info or tech support
<http://www.siig.com/support>