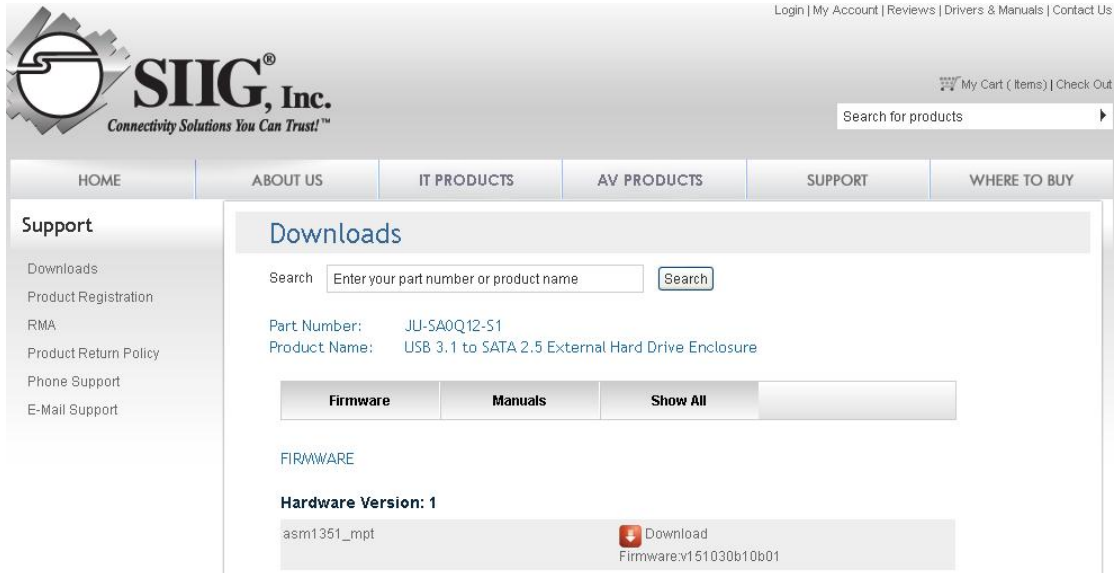


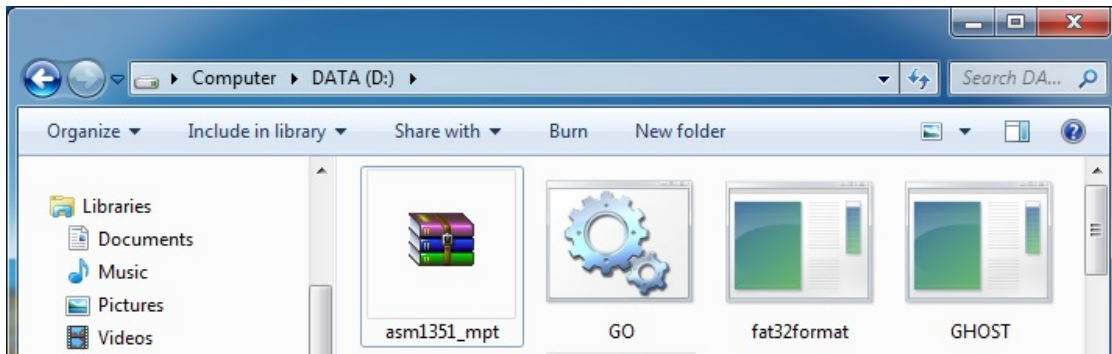
USB 3.1 to SATA 2.5 External Hard Drive Enclosure Firmware upgrade steps

1. Download the file **asm1351_mpt** from SIIG website

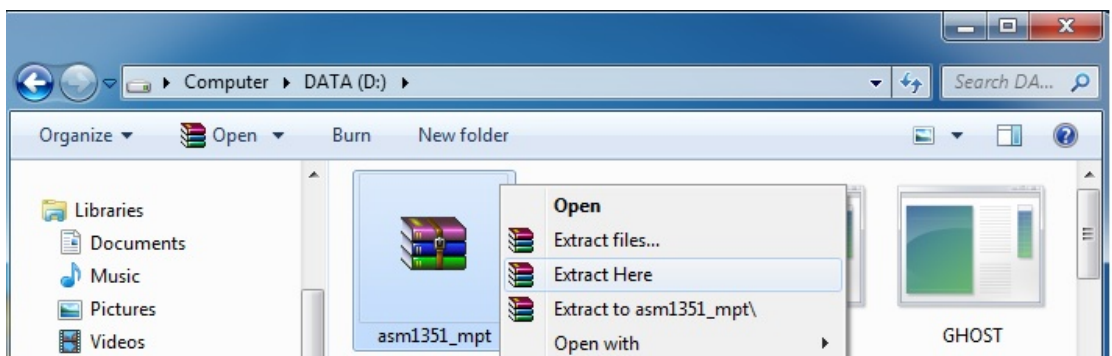
<http://www.siig.com/download/search/?keyword=JU-SA0Q12-S1>



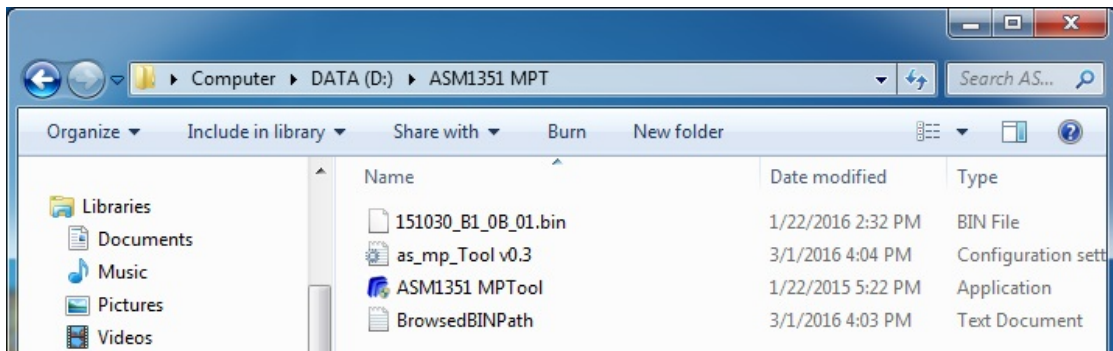
2. Save the file **asm1351_mpt** to Disk D:\



3. Extract file to Disk D:\ (select **Extract Here**)




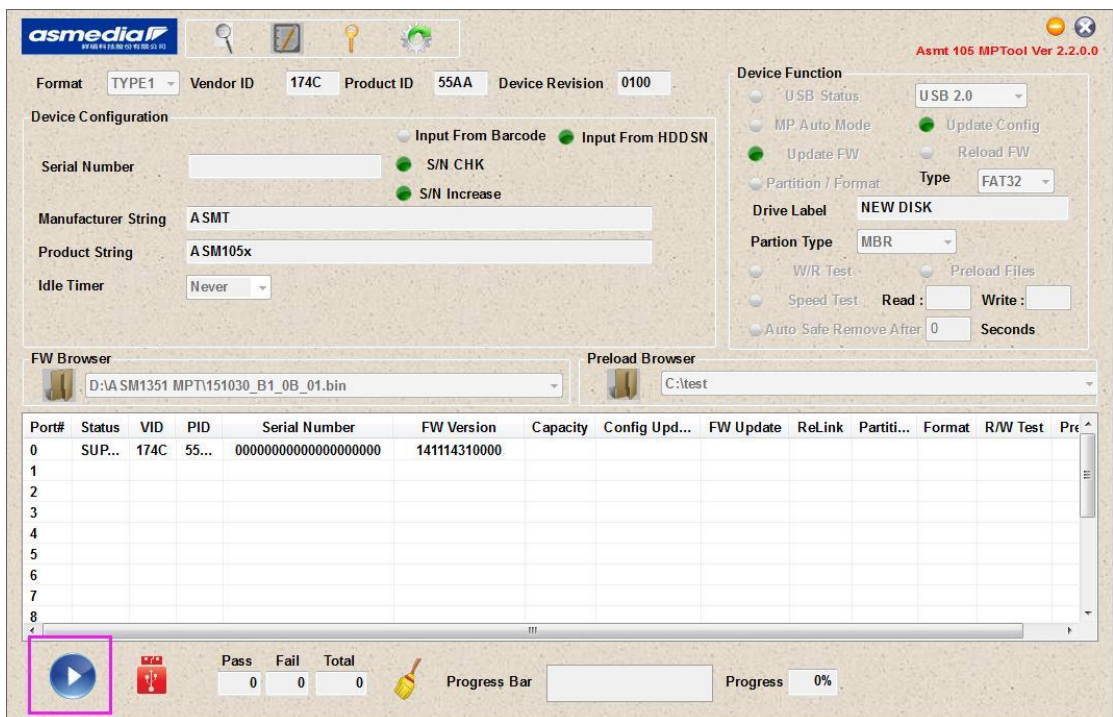
4. Connect your enclosure to PC
5. Into ASM105X folder and double click **ASM1351 MPTool**



6. After double click ASM1351 MPTool.exe will open upgrade software
Confirm your file is extract to the right path in step 2

D:\ASM1351 MPT\151030_B1_0B_01.bin

Click start button 



7. After upgrade finish will show PASS

Format: TYPE1 Vendor ID: 174C Product ID: 55AA Device Revision: 0100

Device Configuration: Input From Barcode (unselected) Input From HDDSN (selected)

Serial Number: [] S/N CHK (selected) S/N Increase (selected)

Manufacturer String: ASMT

Product String: ASM105x

Idle Timer: Never

Device Function: USB Status: USB 2.0 MP Auto Mode: Update Config (selected) Update FW (selected) Reload FW (unselected) Partition / Format: Type: FAT32 Drive Label: NEW DISK Partition Type: MBR W/R Test (unselected) Preload Files (unselected) Speed Test: Read: [] Write: [] Auto Safe Remove After: 0 Seconds

FW Browser: D:\ASM1351 MPT\151030_B1_0B_01.bin Preload Browser: C:\test

Port#	Status	VID	PID	Serial Number	FW Version	Capacity	Config Upd...	FW Update	ReLink	Partiti...	Format	R/W Test	Pre
0	SUP...	174C	55...	00000000000000000000	141114310000		PASS	PASS					
1													
2													
3													
4													
5													
6													
7													
8													

Pass: 1 Fail: 0 Total: 1 Progress Bar: [100%] Progress: 100% **PASS**

8. Safe to remove enclosure then reinsert, can see the FW Version is 151030b10b01

Format: TYPE1 Vendor ID: 174C Product ID: 55AA Device Revision: 0100

Device Configuration: Input From Barcode (unselected) Input From HDDSN (selected)

Serial Number: [] S/N CHK (selected) S/N Increase (selected)

Manufacturer String: ASMT

Product String: ASM105x

Idle Timer: Never

Device Function: USB Status: USB 2.0 MP Auto Mode: Update Config (selected) Update FW (selected) Reload FW (unselected) Partition / Format: Type: FAT32 Drive Label: NEW DISK Partition Type: MBR W/R Test (unselected) Preload Files (unselected) Speed Test: Read: [] Write: [] Auto Safe Remove After: 0 Seconds

FW Browser: D:\ASM1351 MPT\151030_B1_0B_01.bin Preload Browser: C:\test

Port#	Status	VID	PID	Serial Number	FW Version	Capacity	Config Upd...	FW Update	ReLink	Partiti...	Format	R/W Test	Pre
0	SUP...	174C	55...	00000000000000000000	151030b10b01								
1													
2													
3													
4													
5													
6													
7													
8													

Pass: 1 Fail: 0 Total: 1 Progress Bar: [100%] Progress: 100%